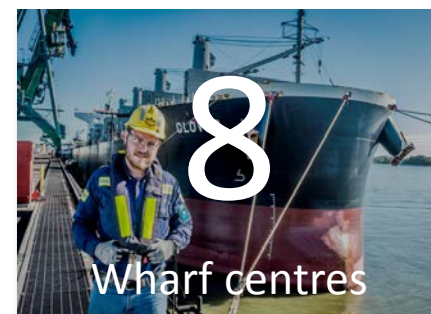
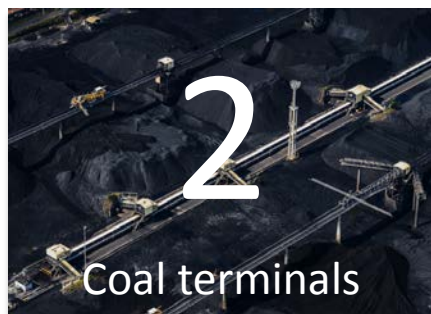
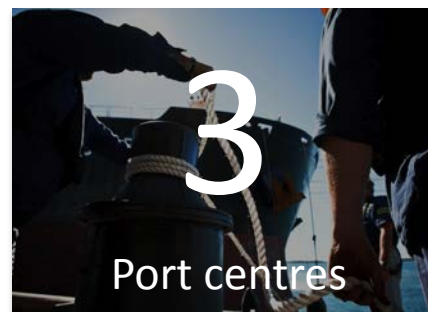


# OUR AGENDA

- Our operations
- East Shores Stage 1b
- PFAS Update
- Clinton Vessel Interaction Project
- Channel Duplication
- Future projects
- Our Community
- Questions and Answers

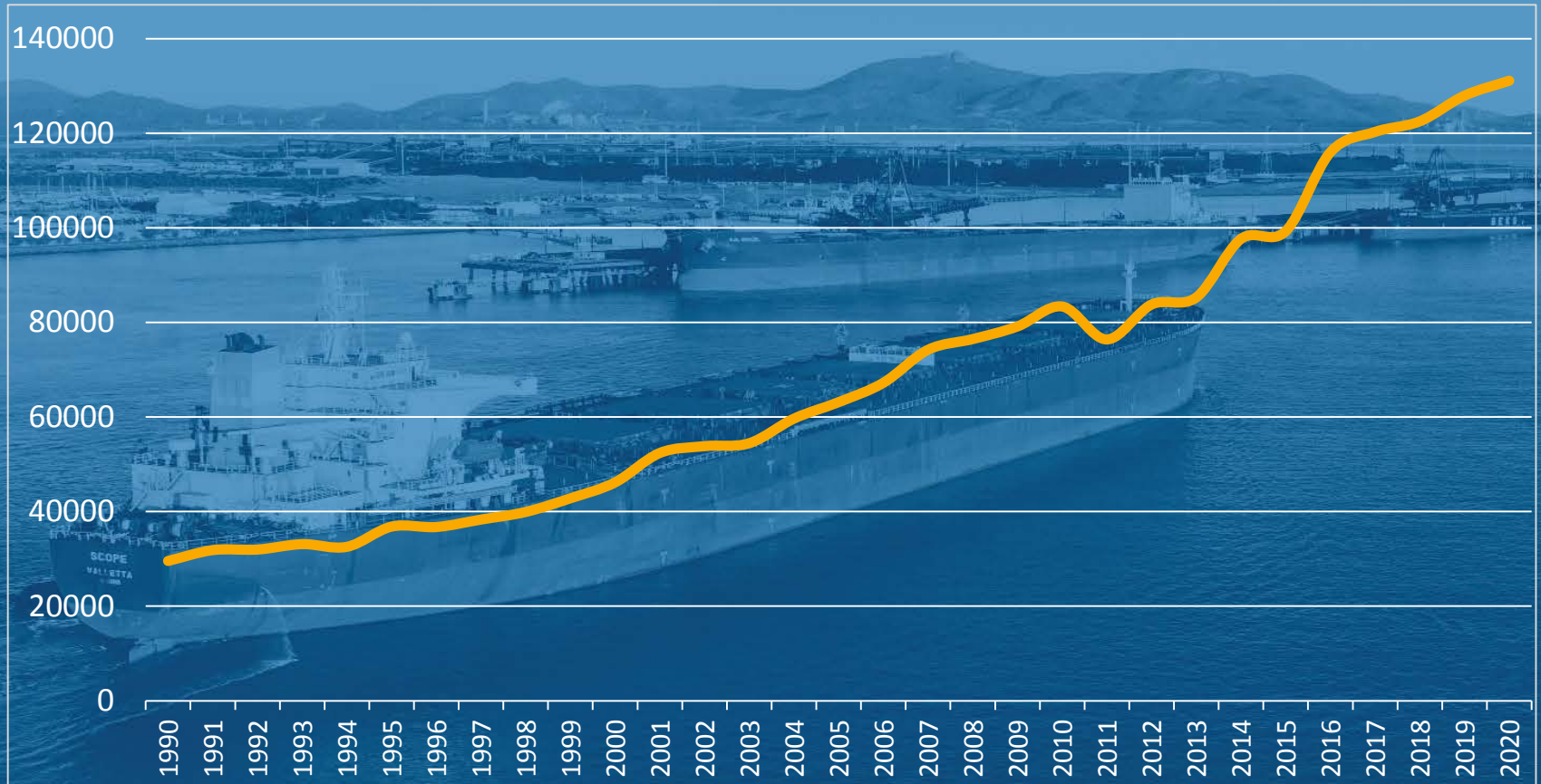
7.00pm meeting close





# THIRTY YEARS OF GROWTH

Total Tonnes (\$000's)



Gladstone Ports Corporation  
*Growth. Prosperity. Community.*

## RGTTCT – 1990-2020



# GPC COMMODITIES

'15 '16 '17 '20

	Actual ('000s)	Actual ('000s)	Actual ('000s)	Forecast ('000s)
<b>Coal</b>	68,565	72,168	68,946	80,250
<b>Alumina, bauxite, ass. Products</b>	23,143	25,338	27,777	27,321
<b>Petroleum</b>	1,363	1,249	1,030	888
<b>LNG</b>	1,644	12,153	19,392	21,910
<b>Grain</b>	146	89	272	220
<b>Sugar/molasses/gypsum</b>	489	516	444	705
<b>Cement</b>	1,698	1,769	1,831	1,500
<b>Other miscellaneous products</b>	2,965	3,444	1,517	1,402
<b>Total</b>	100,013	116,726	121,209	134,196



Gladstone Ports Corporation

Growth. Prosperity. Community.

# OUR OPERATIONS

## RGTTCT



Tonnes unloaded:  
**51,933,888**



Tonnes loaded:  
**52,338,828**

## APT



Tonnes unloaded:  
**949,116**



Tonnes loaded:  
**857,291**

## BPT



Tonnes unloaded:  
**N/A**



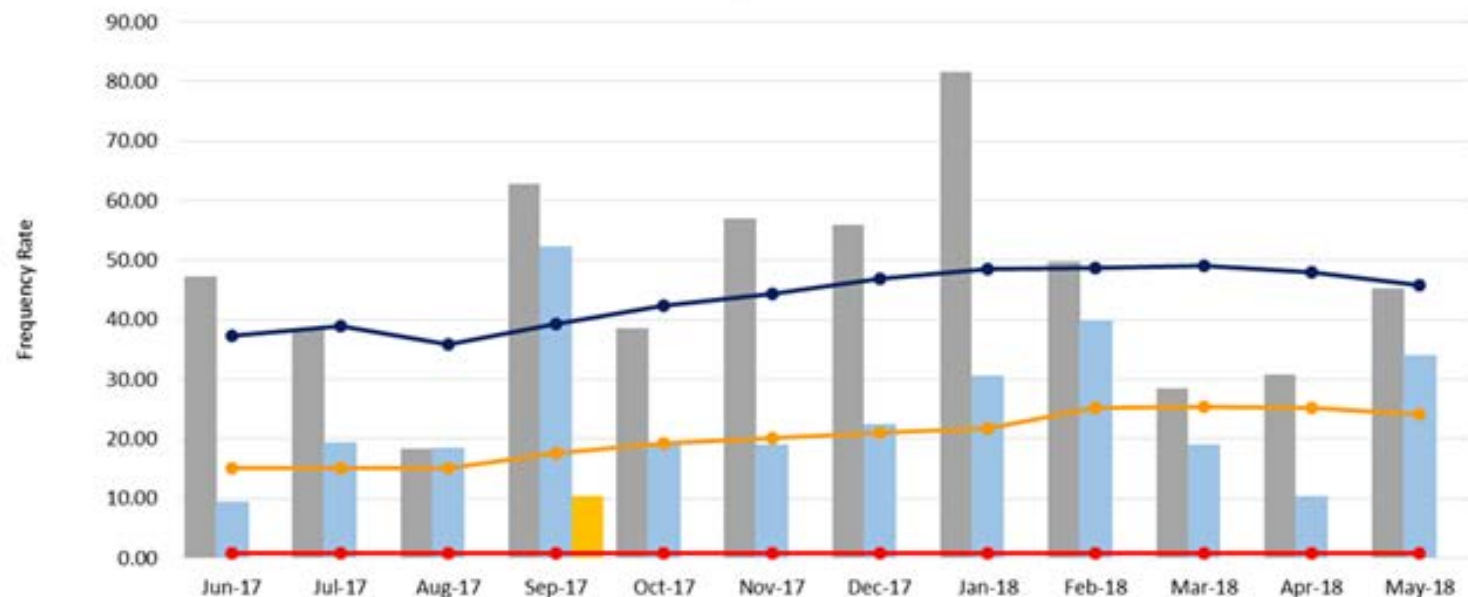
Tonnes loaded:  
**66,288**

# OUR OPERATIONS - SAFETY



Gladstone Ports Corporation  
Growth. Prosperity. Community.

## INJURY FREQUENCY RATES



	Jun-17	Jul-17	Aug-17	Sep-17	Oct-17	Nov-17	Dec-17	Jan-18	Feb-18	Mar-18	Apr-18	May-18
TIFR Current	47.29	38.65	18.39	62.74	38.57	56.96	55.96	81.68	49.76	28.54	30.85	45.25
SIFR Current	9.46	19.32	18.39	52.28	19.28	18.99	22.38	30.63	39.81	19.03	10.28	33.94
LTIFR Current	0.00	0.00	0.00	10.46	0.00	0.00	0.00	0.00	0.00	0.00	0.00	0.00
TIFR Rolling	37.36	38.99	35.88	39.32	42.48	44.34	47.00	48.60	48.75	49.04	48.03	45.79
LTIFR Rolling	0.79	0.80	0.80	0.80	0.80	0.81	0.81	0.81	0.81	0.82	0.81	0.83
SIFR Rolling	15.10	15.12	15.15	17.65	19.24	20.16	21.07	21.87	25.19	25.34	25.24	24.14



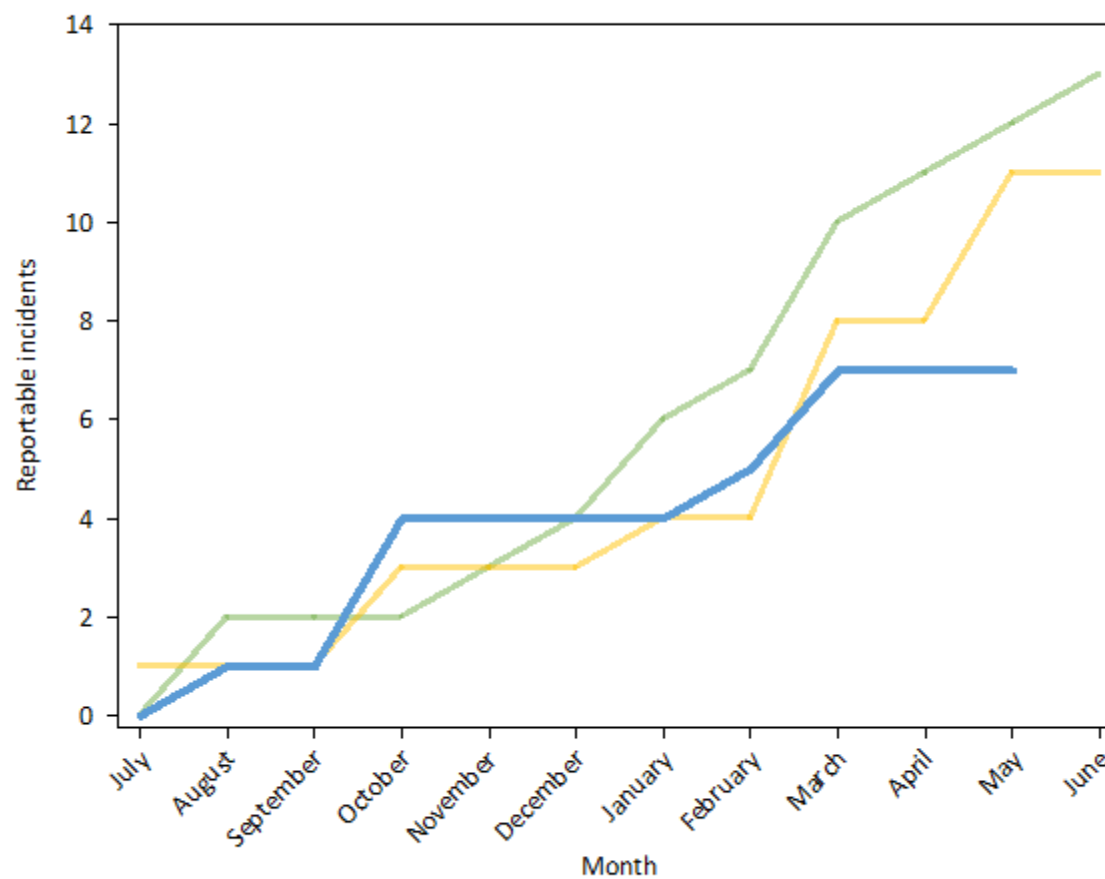
# OUR OPERATIONS – ENVIRONMENT



Gladstone Ports Corporation

*Growth. Prosperity. Community.*

## ENVIRONMENTAL REPORTABLE INCIDENTS (EXCEEDANCES AND APPROVAL NON-CONFORMANCES) FROM 2015/2016 TO 2017/2018



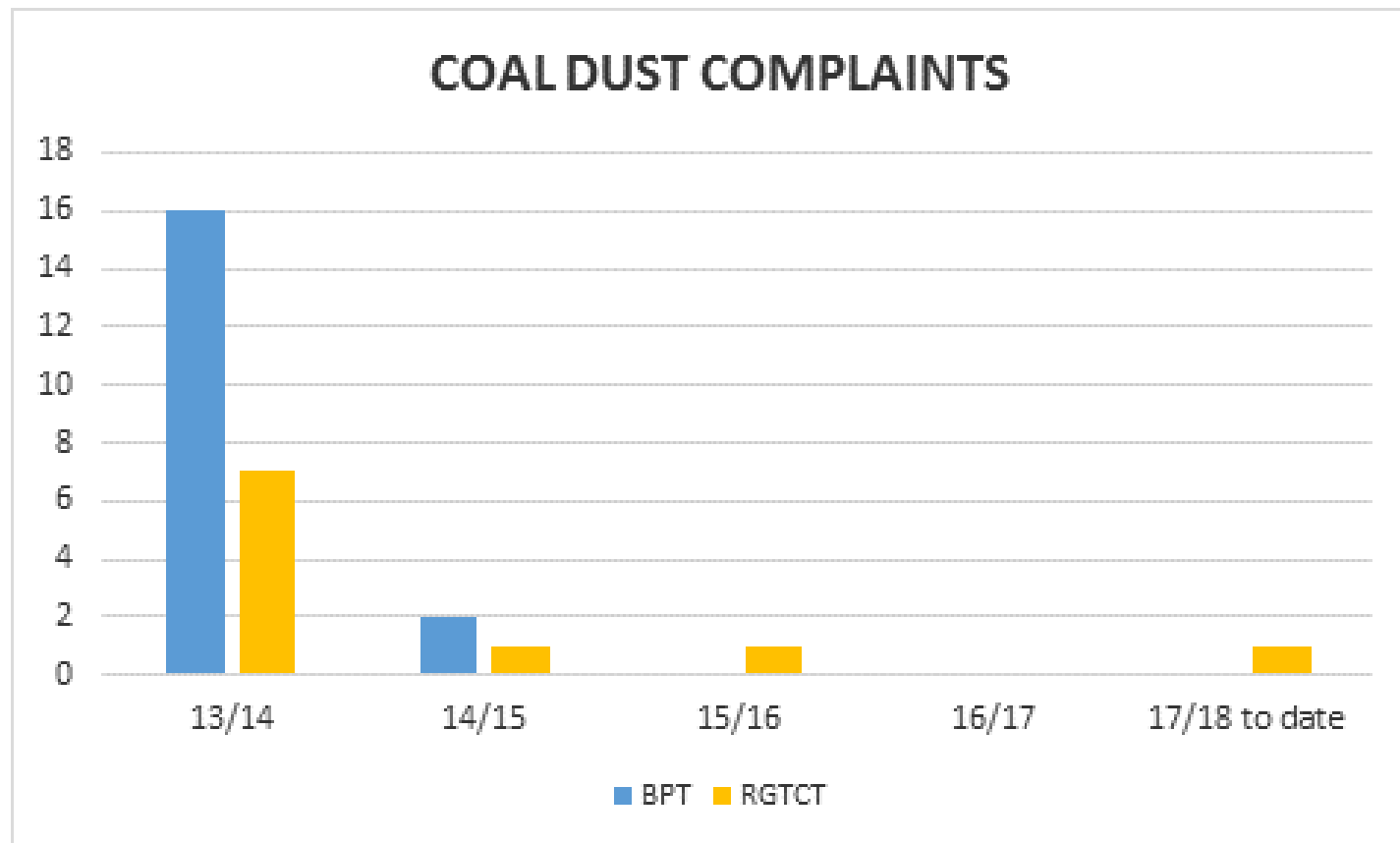
Month vs 2015/2016 = 13    Month vs 2016/2017 = 11    Month vs 2017/2018 = 7 YTD



# OUR OPERATIONS – ENVIRONMENT



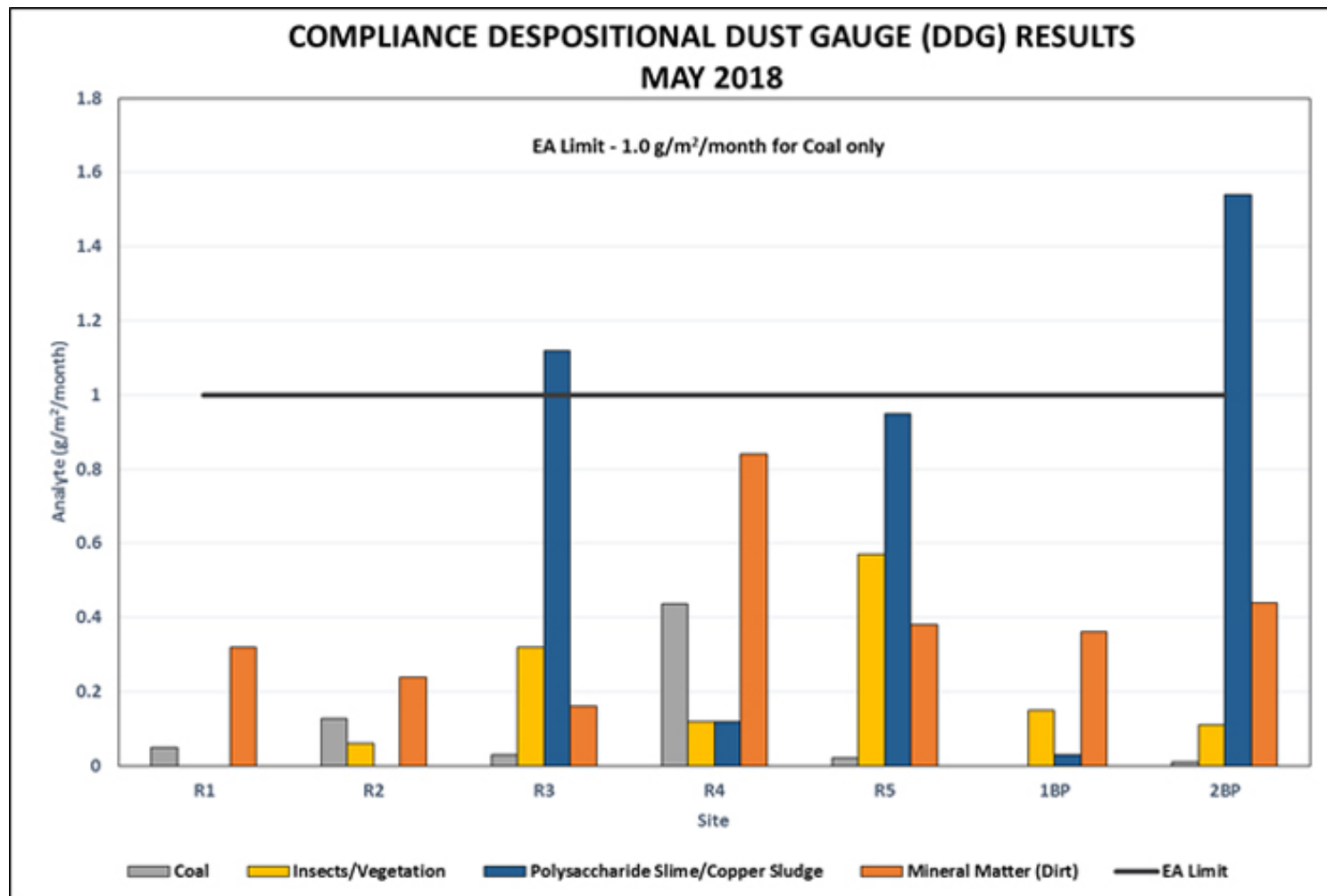
Gladstone Ports Corporation  
*Growth. Prosperity. Community.*



# OUR OPERATIONS – ENVIRONMENT



Gladstone Ports Corporation  
*Growth. Prosperity. Community.*

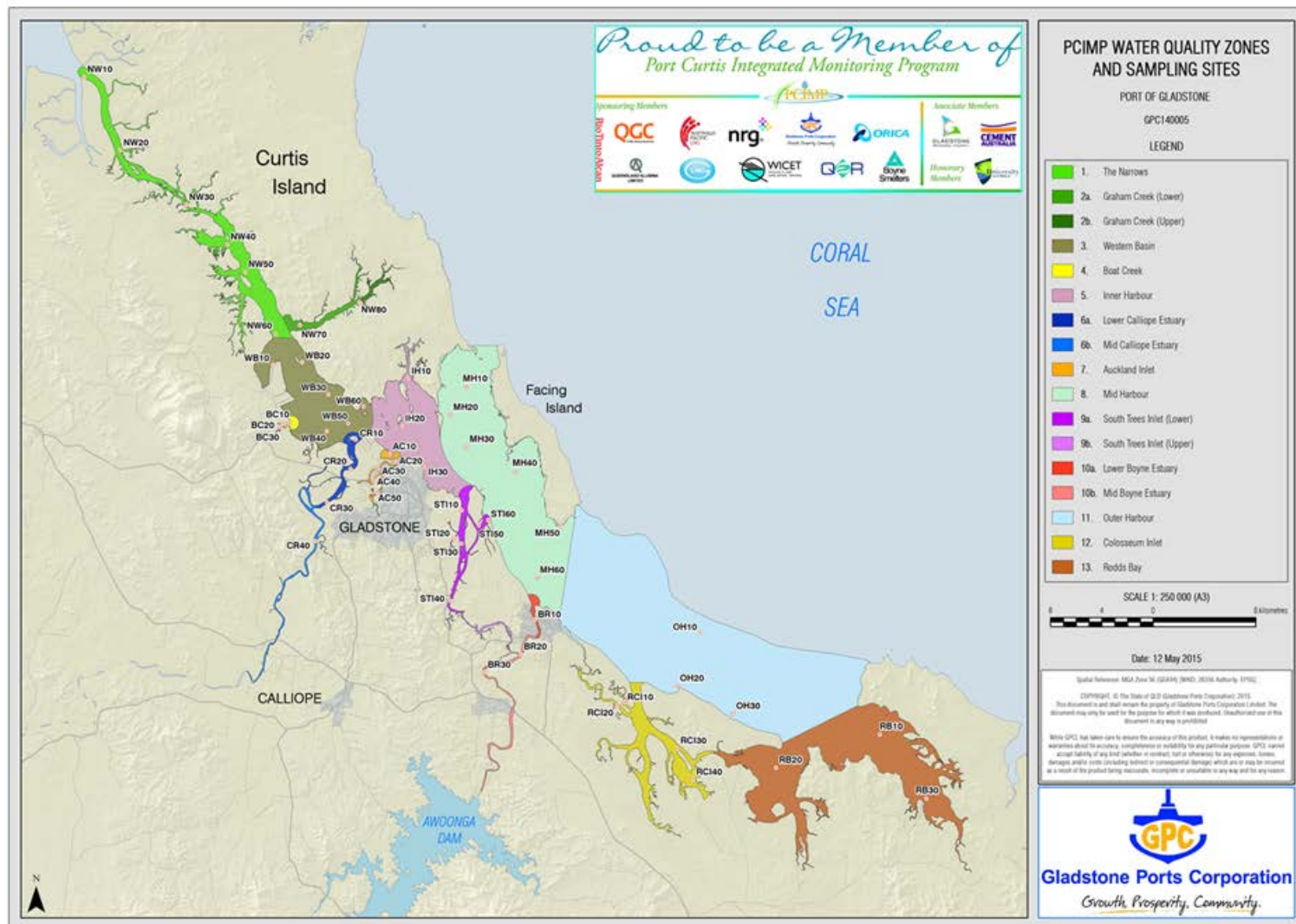




# OUR OPERATIONS – ENVIRONMENT



Gladstone Ports Corporation  
Growth. Prosperity. Community.





# OUR PROJECTS



Gladstone Ports Corporation  
*Growth. Prosperity. Community.*

## EAST SHORES STAGE 1B





# OUR PROJECTS



Gladstone Ports Corporation  
*Growth. Prosperity. Community.*



**Cruise passenger terminal**



# OUR PROJECTS



Gladstone Ports Corporation  
*Growth. Prosperity. Community.*



**Ferry transfer pontoon and pool**



# OUR PROJECTS



Gladstone Ports Corporation  
*Growth. Prosperity. Community.*

## Café, amenity and stage





# OUR PROJECTS



Gladstone Ports Corporation  
*Growth. Prosperity. Community.*



**East Shores future development- Interpretive Centre**

# OUR UPDATE - PFAS

- Some elevated concentrations of PFAS were detected.
- Validation testing returned 14 sites showing elevated levels according to the national guidelines at the Port of Gladstone
- Testing is ongoing at the Port of Bundaberg



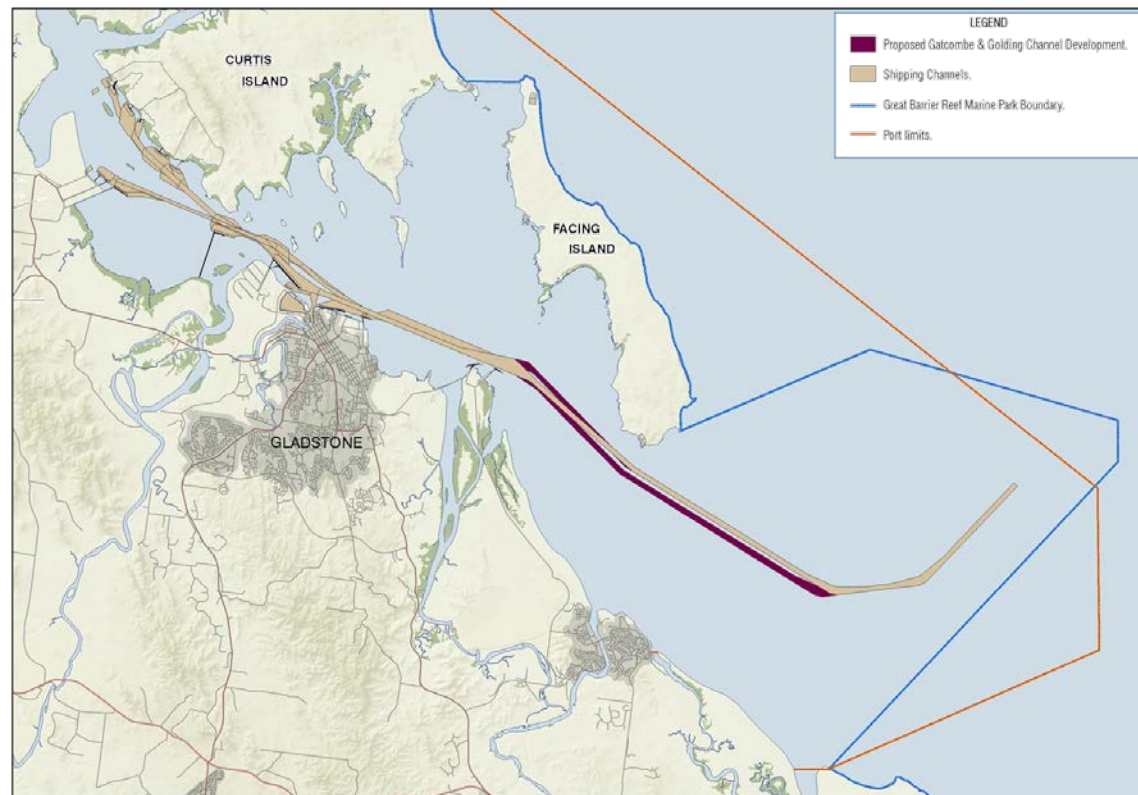
## CLINTON VESSEL INTERACTION PROJECT

- Larger vessels from WICT interact with vessels berthed at RGTCT
- Administrative controls (use of tugs and pilots, control of vessel speed and shiploaders in the air) have been implemented to reduce these risks
- The Clinton Vessel Interaction Project offers a permanent solution to eliminate these risks
- The project will increase the separation distance between vessels reduces the interaction forces
- Target, second half of 2019.



## CHANNEL DUPLICATION PROJECT

- Improve operational and economic efficiencies
- Accommodate growth for long term sustainability of port
- Improve existing and future safe passage of vessels within the port
- Five year planning horizon.





# OUR PROJECTS



Gladstone Ports Corporation  
*Growth. Prosperity. Community.*

## Future planning

- 50 Year Strategic
- Port access road
- Targinnie Channel





# OUR COMMUNITY



Gladstone Ports Corporation  
*Growth. Prosperity. Community.*



**\$14M**

invested in to community projects over the last 10 years.



**\$2.5M**

invested per annum in parklands.







Gladstone Ports Corporation  
*Growth, Prosperity, Community.*

# Every step counts!

## Sunday, 19 August 2018

Register now at  
[botanictobridge.com.au](http://botanictobridge.com.au)



# OUR COMMUNITY



**RAP and ILUA** helping bridge the gap

**4.14%** of workforce Aboriginal, Torres Strait Islander & Australian South Sea Islander

Future Directions Community Liaison Group

Talent Today, Talent Tomorrow Bursary and Scholarship program

Cross Industry Operations Traineeship program



# QUESTIONS AND ANSWERS

