



Gladstone Ports Corporation

Growth, Prosperity, Community.

Transport Infrastructure Act 1994

Gladstone Ports Corporation

Port Notice 05/17

Category 1 Buoy Moorings

1. Unpowered vessels with a length over all (LOA) of up to 45 metres and powered vessels with a LOA of up to 50 metres may be moored in the Gladstone Marina subject to availability.
2. All other vessels engaged in marine construction activities and not suitable for berthing in the Gladstone Marina will be required to be moored in the designated Category 1 buoy mooring area. Refer to the map on page 2.
3. The Category 1 buoy mooring area is defined as the area situated between:
 - 23° 45'.0 S - 151°9'.8 E
 - 23° 45'.0 S - 151°10'.0 E
 - 23° 46'.4 S - 151°10'.4 E
 - 23° 46'.4 S - 151°10'.1 E
4. All vessels requiring a mooring in the Category 1 buoy mooring area must provide a minimum of 12 weeks notice to Gladstone Ports Corporation's Marina office.

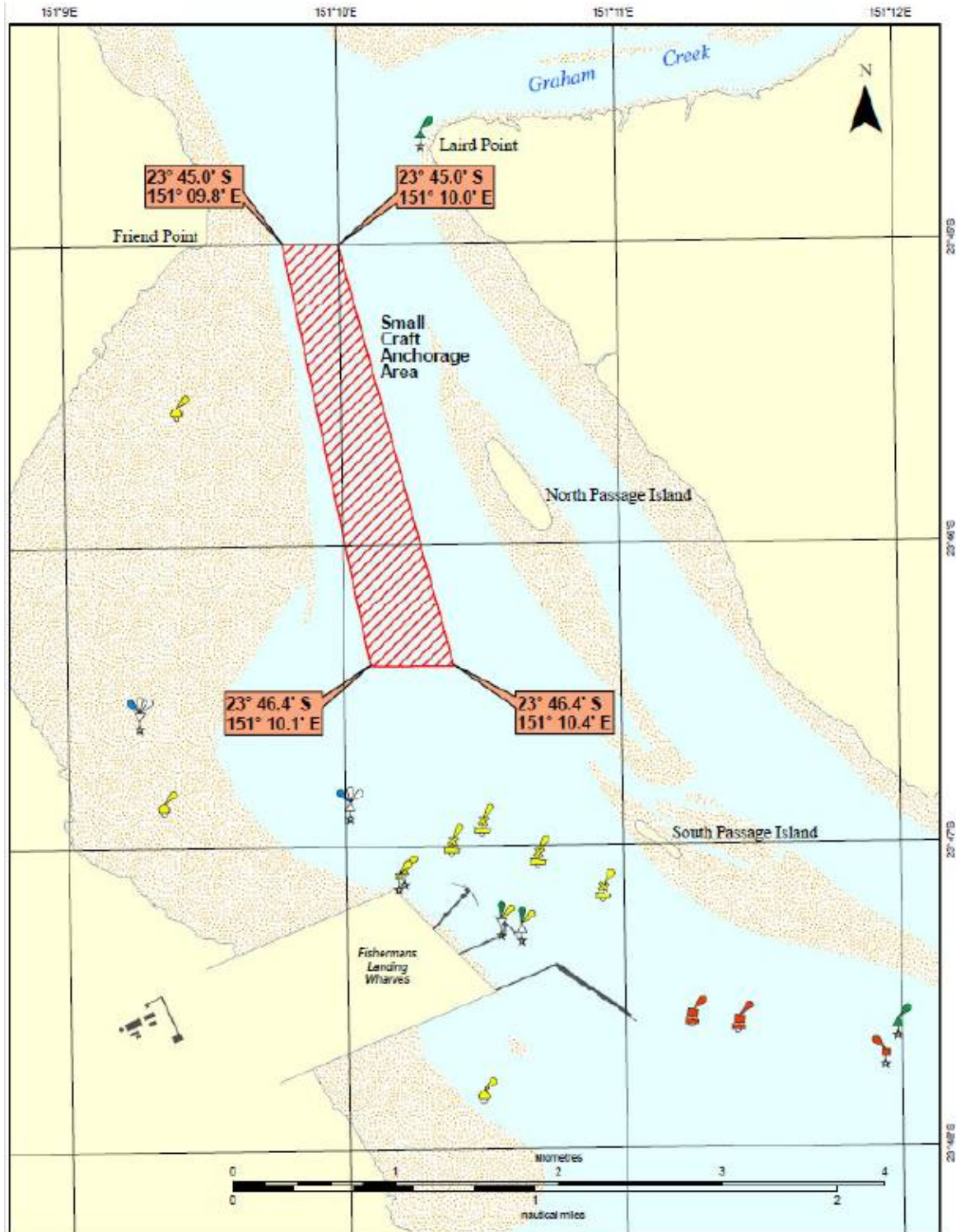
These Gladstone Ports Corporation – LNG Vessel Operating Parameters are also subject to the Gladstone Port Procedures and powers of the Regional Harbour Master under the *Transport Operations (Marine Safety) Act 1994*.

The provisions of Port Notice 04/10 Gladstone Ports Corporation – LNG Vessel Operating Parameters, dated 05/05/2010 are hereby revoked.



Gladstone Ports Corporation

Growth, Prosperity, Community.



Horizontal datum: GDA94
Map projection: MGA 56

Map: C2-157

Prepared 23 November 2010
Maritime Safety Queensland
Spatial Services Unit

Small Craft Anchorage Area GLADSTONE (Restrictions Apply)

© The State of Queensland
(Department of Transport and Main Roads) 2010
To view a copy of the licence visit
<http://creativecommons.org/licenses/by-nc/4.0/au>

