



26 July 2021

FDC Fitout & Construction
c/- Anthony Farr
Level 3, 1 Breakfast Creek Road
NEWSTEAD QLD 4006

Dear Mr Farr,

DECISION NOTICE – APPROVAL WITH CONDITIONS – DA2021/16/01

(GIVEN UNDER THE PROVISIONS OF GPC LAND USE PLAN 2012V2)

1. Application Details

This development application was **properly made** to the Gladstone Ports Corporation Limited on **17 May 2021**.

Application Number:	DA2021/16/01
Applicant Name:	FDC Construction and Fitout Pty Ltd
Applicant Contact Details:	Anthony Farr FDC Fitout & Construction Level 3, 1 Breakfast Creek Road NEWSTEAD QLD 4006 Email: anthonyf@fdcbuilding.com.au
Approvals Sought (Land Use Plan):	1. Port Application for sewerage and water infrastructure
Details of Proposed Development:	Sewerage infrastructure and connection and reticulated water infrastructure and connection associated with DA2020/05/01
Location Street Address:	113 Bryan Jordan Drive CALLEMONTAH QLD 4680
Location Real Property Description:	Lease MAAV in Lot 210 on SP120888 on SP311651 and adjacent construction access area
Land Owner:	Gladstone Ports Corporation Limited
Land Use Plan Precinct:	Strategic Port Land – Parkland and Education Precinct

2. Details Of Proposed Development

In association with the Central Queensland University's School of Manufacturing DA2020/05/01, this development includes:

- (a) installation of sewerage infrastructure and connection with existing sewer main and
- (b) installation of reticulated water infrastructure and connection with existing water main.

3. Details Of Decision

This development application was **decided** on **26 July 2021**.

This development application is **approved in full with conditions**. These conditions are set out in Attachment 1 and are clearly identified to indicate whether the assessment manager or a concurrence agency imposed them.

This application is **not** taken to have been approved (a deemed approval) under section 64(5) of the *Planning Act 2016*.

4. Details Of Approval

This development approval is a **Development Permit** given for:

- (a) Port application for undertaking work in, on, over or under premises that materially affects the premises or their use including sewerage and water infrastructure and associated excavating or filling (*GPC Land Use Plan 2012v2*).

5. Conditions

This development approval is subject to the conditions in Attachment 1 - Part 1 and Part 2.

6. Further Development Permits

Please be advised that the following development permits are required to be obtained before the development can be carried out:

- (a) Port application for installation of all services and infrastructure in, on or over the site including, but not limited to, stormwater, energy, telecommunications, outdoor lighting, fire hydrants and boosters and connections, and landscaping irrigation system;
- (b) Operational works that is tidal works and involves marine plants for stormwater outlets outside lease area;
- (c) Any approvals for building works; and
- (d) Any approvals for plumbing and drainage works.

7. Approved Plans and Specifications

Copies of the following plans, specifications and/or drawings are approved and enclosed in Attachment 2:

Drawing/report title	Prepared by	Date	Reference no.	Version	Approval subject to the following changes
Aspect of development: Port Application (Land Use Plan)					
Sewer rising main - layout plan	Cardno	04/02/2021	CQU-GLD-015-GN-CIV-062	A	
Sewer rising main - longitudinal section	Cardno	04/02/2021	CQU-GLD-015-GN-CIV-063	A	
Water reticulation - locality plan and notes	Cardno	04/02/2021	CQU-GLD-015-GN-CIV-070	A	
Water reticulation - layout plan	Cardno	04/02/2021	CQU-GLD-015-GN-CIV-072	A	
Traffic Guidance Scheme – Bryan Jordan Drive	Aaction Traffic	09/12/2021	TGS Number: 21-2858		
Traffic Guidance Scheme – Bryan Jordan Drive	Aaction Traffic	09/12/2021	TGS Number: 21-2859		
Traffic Guidance Scheme – Bryan Jordan Drive	Aaction Traffic	09/12/2021	TGS Number: 21-2860		
Planting plan – sheet 05	Peddle Thorp	05/07/2021	CQU-GLD-015-N-LSS-605	Issue B	As amended on 26/07/2021
Planting plan – sheet 06	Peddle Thorp	05/07/2021	CQU-GLD-015-GN-LSS-606	Issue B	As amended on 26/07/2021

12. Currency Period for the Approval

Pursuant to section 85 of the Planning Act, this development approval will lapse at the end of the periods set out below:

- (a) For Port Application this approval lapses 6 years after this approval decision date.

13. Rights of Appeal

No legislated appeal rights are afforded with this decision notice as the application was not made under the provisions of the *Planning Act 2016*.

For further information please contact Judy Horsfall, Planning Advisor, on 07 4976 1314 or the undersigned on 07 4976 1287 or via email planning@gpcl.com.au .

Yours sincerely,



Erin Clark
Principal Planner

- Enc. Attachment 1: Conditions of Approval
Part 1 – Conditions imposed by the assessment manager
- Attachment 2: Approved plans and specifications

Attachment 1 Conditions of Approval

PART 1: ASSESSMENT MANAGER CONDITIONS

In general the development proposal is in compliance with the requirements of Gladstone Ports Corporation Limited (GPC). This development approval is subject to each the following conditions which are stated by GPC, the Assessment Manager.

Part 1a: Approval sought under Land Use Plan – Port Application

GENERAL

1. Development must be carried out generally in accordance with the Approved plans, except where modified by conditions of this permit.
2. Unless otherwise stated, all conditions must be complied with and completed prior to the commencement of the development.
3. Where additional “approval” is required under these conditions by the Assessment Manager (GPC) for drawings or documentation the proponent must submit for review, amend to the satisfaction of, and obtain written approval from the Assessment Manager.

Furthermore, the Assessment Manager will require no less than 10 business days, unless otherwise conditioned by the Assessment Manager, to initially assess the drawings or documentation provided prior to the commencement of the works. Should further information be required for assessment, the Assessment Manager will require a further 5 business days to complete the information request assessment and response.

4. The proponent must at its cost and expense, keep and maintain the development footprint, including existing services, in a state that is satisfactory to the Assessment Manager (GPC).

ENGINEERING & PLANNING

5. Water infrastructure connection works must be carried out under the observation of, and in coordination with, the Assessment Manager. The proponent must:
 - a) notify GPC's engineer regarding proposed connecting date & timing at least 10 business days prior to works commencing;
 - b) arrange for GPC's engineer to undertake the isolation of the Water Main on Bryan Jordan Drive; *Note: timing for the works / isolation will need to take into consideration minimising impacts to existing marina users*
 - c) have GPC's engineer arrange GPC plumbers to be present when undertaking the Tee & Valve connection;
 - d) arrange for GPC's engineer to un-isolate the Water Main;
 - e) continue installation of water main infrastructure works as required.

Note: Coordination of works with the Assessment Manager can be conducted directly with GPC's Port Infrastructure Asset Team Engineer on 4976 1127.

6. Upon completion of the works, the proponent must supply GPC with certified “As Constructed” plans for water and sewerage infrastructure in both hard copy (2 of) and electronic (CAD format), which illustrate all infrastructure and services installed on, under or over Port land associated with the activity.
7. “As Constructed” plans must be updated versions of the approved “for construction” plans, where “for construction” plans were submitted.

8. Upon completion of the works the proponent must also certify that the development is constructed as per design and generally in accordance with the approved plans prior to the use commencing. Plans shall be certified by an appropriately qualified and competent person, including RPEQ Engineer or Licenced Certifier.

Traffic Management

9. Prior to commencing any sewerage infrastructure works, submit to and have approved by the Assessment Manager a Traffic Management Plan and Traffic Guidance Scheme designed and implemented in accordance with the current edition of the Manual of Uniform Traffic Control Devices, Part 3 – works on roads. This requirement applies to any works associated with sewerage infrastructure in all locations within and external to the lease area.

Once approved, the works must be carried out in accordance with Traffic Management Plan and the plan will form part of the Approved plans.

General Infrastructure

10. The proponent must notify the Assessment Manager (GPC) of damage caused to any port or port user infrastructure or services including, but not limited to, security related devices, landscaping (vegetation and irrigation infrastructure), buildings, fences, lighting etc., roads, walkways and underground services or infrastructure, as a result of the approved use or during construction. The proponent must undertake necessary repairs at their expense and to the satisfaction of the Assessment Manager (GPC).

Sewerage Infrastructure

11. Prior to any works commencing on site, the proponent must submit to the Assessment Manager and the Gladstone Regional Council, to the satisfaction of the Assessment Manager:
 - a) amended Servicing Strategy Advice with updated network assumption i.e. A34 and other Marina pump stations flow into D01 catchment, not A01 catchment;
 - b) amended Servicing Strategy Advice that confirms sufficient capacity in DO1 catchment; and
 - c) evidence of potholing existing services and demonstrate that minimum cover is provided between the existing services and the proposed sewerage rising main in accordance with Gladstone Regional Council standards.

Note: Gladstone Regional Council's Strategic Asset and Performance department may be available to discuss any revised material prior to lodgement.

Acid Sulphate Soils

12. In the event acid sulphate soils are disturbed/excavated and require treatment on site or any land owned by GPC, a site specific acid sulphate management plan, including treatment locality and volumes and disposal locality, must be submitted to the Assessment Manager for approval prior to such works commencing.

Upon approval of the management plan, the works must be carried out in accordance with this plan and the plan will form part of the Approved plans.

Excavation Material

13. Excess cut material is not to be stored on GPC land at any time, unless approved in writing by the Assessment Manager.

Fill Material

14. Fill material must be uncontaminated and obtained from a licensed quarry, unless approved in writing by the Assessment Manager.

Landscaping & Rehabilitation

15. Trees, shrubs or other plants must not be damaged, trimmed or removed, without written approval from the Assessment Manager.
16. Existing irrigation infrastructure must not be damaged, interfered with, or removed without written approval from the Assessment Manager.
17. Prior to works commencing, landscaping protection zones, for trees, shrubs or other plants, are to be submitted to the Assessment Manager for approval.
18. Prior to works commencing, submit to the Assessment Manager for approval, a rehabilitation plan or similar details of reinstatement of any infrastructure e.g. footpath, irrigation infrastructure etc. and reinstatement of vegetation including turf, shrubs, trees etc. to the southern and northern side of Bryan Jordan Drive.

Note: Like for like species, including grass species is to be used in rehabilitation of landscaping and even ground levels must be maintained after trench backfilling and compaction and topsoiling for public pedestrian safety and turf maintenance.

Construction Management

19. Prior to commencing work, submit to and have approved by the Assessment Manager, a drawing identifying the location and size of any new construction compound/s to be used for the duration of the construction phase of the development. The drawing must identify the activities to be carried out within the construction compound including the number of car parks to be provided.
20. The construction compound, including offices, laydown areas and employee car parking, if required, is to be contained within the nominated area unless otherwise approved in writing by the Assessment Manager.
21. In the event a new construction compound is required on port land outside the existing construction compound or School of Manufacturing lease area, prior to works commencing, the proponent or their contractor must obtain a Consent to Enter from GPC's Property Advisor via 07 4976 1334 or property@gpcl.com.au.
22. The hours for the construction of the facility (i.e. operation of any machinery and/or other equipment) is to be restricted to between 6.30am and 6:30pm Monday to Friday and 6.30am to 12.30pm Saturday. No works shall be undertaken on Sunday or on public holidays. Any variations to these times will be subject to the written approval of the Assessment Manager.
23. No mud, dirt or other debris is to be tracked onto GPC owned or public roads during the works.
24. Upon completion of the construction works, the proponent must reinstate the property to the same condition prior to the works being undertaken unless agreed to in writing by the Assessment Manager.

Car Parking

25. Employee and contractor car parking must be provided within the existing or any new construction site or construction compound and existing broader CQU facility car parks.
26. Construction employees and contractors must not use car parking provided for the Gladstone Marine Centre, Gladstone Marina and Gladstone Ferry Terminal.

Gladstone Ports Corporation Limited

T: +61 7 4976 1333 • Fax: +61 7 4972 3045 • 40 Goondoon St/PO Box 259, Gladstone QLD, 4680, AUSTRALIA • www.gpcl.com.au
ACN 131 965 896 ABN 96 263 788 242

Waste management

27. At all times, maintain and operate an adequate waste disposal service, including the maintenance of refuse bins and associated storage areas so as not to cause an environmental nuisance.

Lighting

28. Any site lighting used during construction should not impact on the visibility of Navigational Aids utilised for the primary shipping channels nor illuminate a landward glare beyond the site boundary. Lighting must be continually reviewed during construction with respect to navigation and will be revised as required in response to negative impacts as they arise.

ENVIRONMENT

Construction Environmental Management Plan

29. Prior to construction works commencing on site, a Construction Environmental Management Plan (CEMP) specific to these sewerage and water infrastructure works and applicable for the full duration of these works, is to be submitted to the Assessment Manager (GPC) for approval.

The construction must be undertaken in accordance with the approved CEMP that ensures:

- a) environmental risks, including but not limited to, noise (including any approved noise impact assessment), stormwater (site specific and road side erosion and sediment controls), odour, lighting, and dust, are identified, managed and continually assessed in relation to the construction activity;
- b) that staff are trained and aware of their obligations under the EMP, including a copy of the management plan and development approval available on site at all times;
- c) that reviews of environmental performance are undertaken at least annually;
- d) consistency with this decision e.g. hours of operation; and
- e) any amendments to the EMP, including any listed within these conditions of approval, are to be submitted to GPC for review and approval.

Once approved by the Assessment Manager, the construction activity must be carried out in accordance with this CEMP.

Incident notification

24. At all times, Gladstone Ports Corporation Environment Hotline (07) 4976 1617 is to be notified of the occurrence of any:
- a) release / spill of contaminants (e.g. fuels / chemicals / sewerage) greater than 250L to land;
 - b) release / spill of contaminants (e.g. fuels / chemicals / sewerage) of any amount to water;
 - c) any environmental complaints received by the holder of this approval; and
 - d) non-compliance with environment related conditions of this approval, or any other environmental approval obtained in relation to the approved activity.

ADVICE NOTES

1. The proponent must comply with the related development approval DA2020/05/01.
2. The proponent must comply with the related Consent to Enter for the installation of sewerage and water infrastructure.
3. The proponent must comply with the related Permit to Dig/Excavate for the installation of sewerage and water infrastructure.

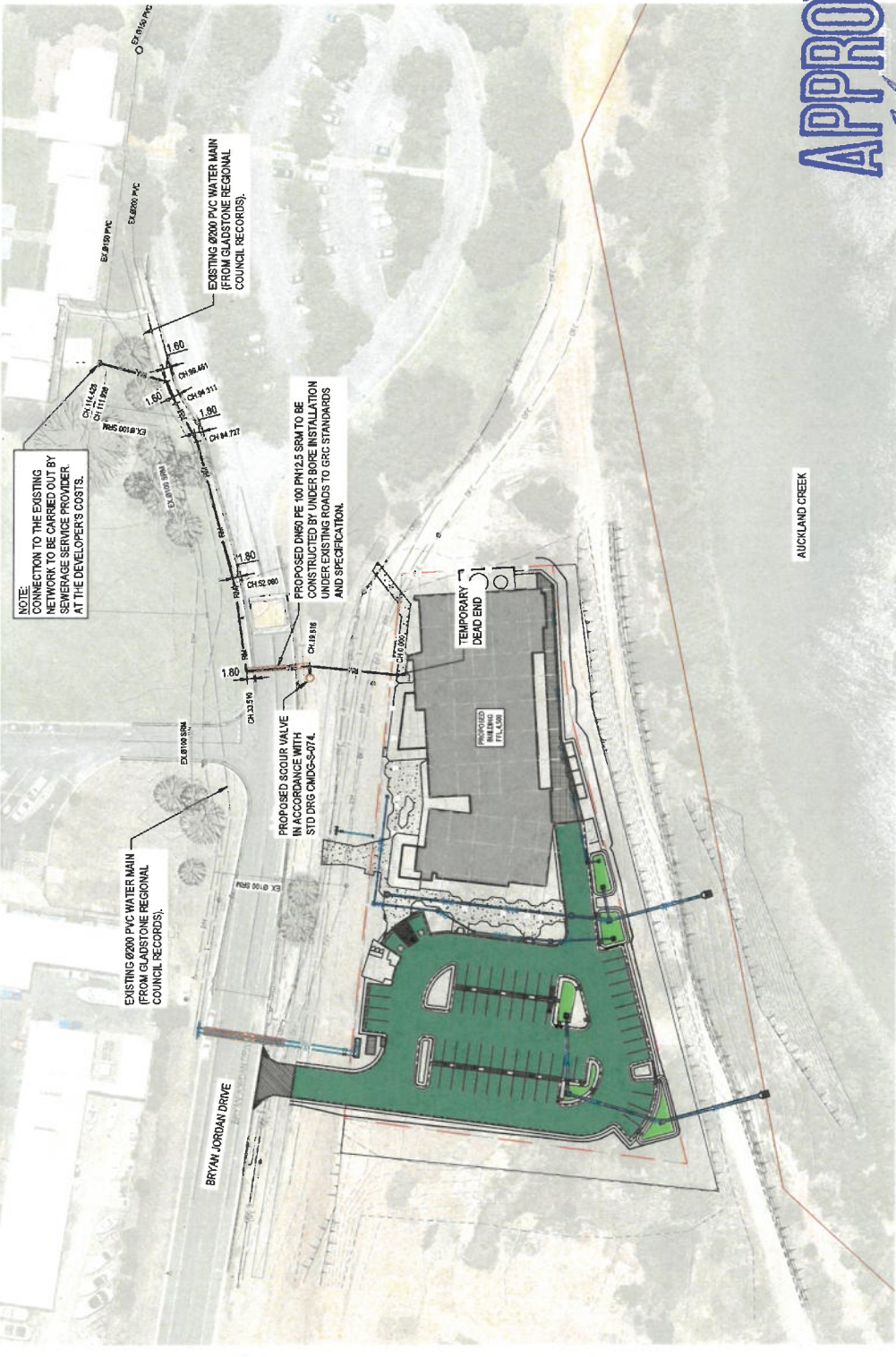
Gladstone Ports Corporation Limited

T: +61 7 4976 1333 • Fax: +61 7 4972 3045 • 40 Goonoon St/PO Box 259, Gladstone QLD, 4680, AUSTRALIA • www.gpcl.com.au
ACN 131 965 896 ABN 96 263 788 242

4. All other relevant approvals must be obtained before commencement of the development or operation of the development, including any Building works or Plumbing and drainage works and Port Application for other infrastructure and services.
5. The *Environmental Protection Act 1994* states that a person must not carry out any activity that causes, or is likely to cause, environmental harm unless the person takes all reasonable and practicable measures to prevent or minimise the harm. Environmental harm includes environmental nuisance. In this regard persons and entities, involved in the civil, earthworks, construction, and operational phases of this development, are to adhere to their 'general environmental duty' to minimise the risk of causing environmental harm.
6. This decision notice does not represent an approval to commence Building work or plumbing and drainage work.
7. Where the Applicant is required to submit further documentation to the Assessment Manager, this is to be directed to the Planning section at planning@gpcl.com.au, including reference to the allocated development application number.
6. Where a construction compound, laydown area or acid sulphate soil treatment site is required outside the lease area for the development, the proponent or their contractor is required to apply for and obtain a Consent to Enter from GPC's Property Specialist via 07 4976 1334 or property@gpcl.com.au prior to works commencing.

Attachment 2 Approved Plans and Specifications

NOTE:
 PROVIDE ANCHORS AND THRUST BLOCKS AT ALL BENDS IN ACCORDANCE WITH THE CMOGS WATER SUPPLY NETWORK D11 DESIGN GUIDELINES. CONCRETE THRUST BLOCKS TO BE CONSTRUCTED IN ACCORDANCE WITH CMOGS-WA01. REFER DRAWING CQU-GLD-015-GN-CN-060 FOR THRUST BLOCK NOTES.

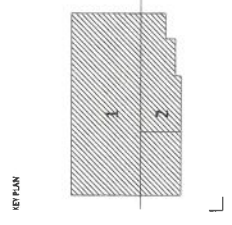


- LEGEND**
- EXISTING MAJOR CONTOURS
 - PROPERTY BOUNDARY
 - EXISTING SEWER
 - PROPOSED SEWER
 - PROPOSED B2 TYPE 7m WIDE DRIVEWAY IN ACCORDANCE WITH CMOGS STANDARD DRAWING CMOGS-R002A.
 - PROPOSED PAVEMENT - TYPE A REFER TO PAVEMENT DETAIL ON DWG QLD-GLD-015-GN-CN-V432
 - PROPOSED PAVEMENT - TYPE B REFER TO PAVEMENT DETAIL ON DWG QLD-GLD-015-GN-CN-V432
 - PROPOSED PAVEMENT - TYPE C REFER TO PAVEMENT DETAIL ON DWG QLD-GLD-015-GN-CN-V432
 - PROPOSED BUILDING

WARNING!
 BEWARE OF UNDERGROUND SERVICES THE LOCATIONS OF UNDERGROUND SERVICES HAVE BEEN INTERPOLATED FROM GIS INFORMATION AND ARE NOT TO BE RELIED UPON. THE RESPONSIBILITY IS TAKEN FOR THE ACCURACY OF THE INTERPOLATED INFORMATION SUPPLIED. ENSURE ALL SERVICES ARE ACCURATELY LOCATED PRIOR TO COMMENCEMENT OF WORK.

APPROVED

26/07/2021



AMENDMENTS

No.	Description	Date	By
1	ISSUED FOR CONSTRUCTION	04/02/2021	IG

FOR CONSTRUCTION

Cardno
 Country (61) 7 3988 9622
 Level 11, 115 St. Pauls Terrace
 Tel: (7) 3988 9622 Fax: (7) 3988 8772
 Web: www.cardno.com.au

CLIENT
 CQ University
 AUSTRALIA
 CQU DRAWING NO. CQU-GLD-015-GN-CIV-062

COMPLAINTS
 Project: 451 7499 P000
 Contact: 451 7398 9622
 Manager: 451 7397 8888
 Engineer: 451 7397 8888
 Inspector: 451 7397 8888
 Surveyor: 451 7397 8888
 Contact: 451 7398 9622

FDC
 FDC Construction & Fitout

PROJECT
 CQ UNIVERSITY - GLADSTONE
 SCHOOL OF MANUFACTURING
 SEWER RISING MAIN
 LAYOUT PLAN

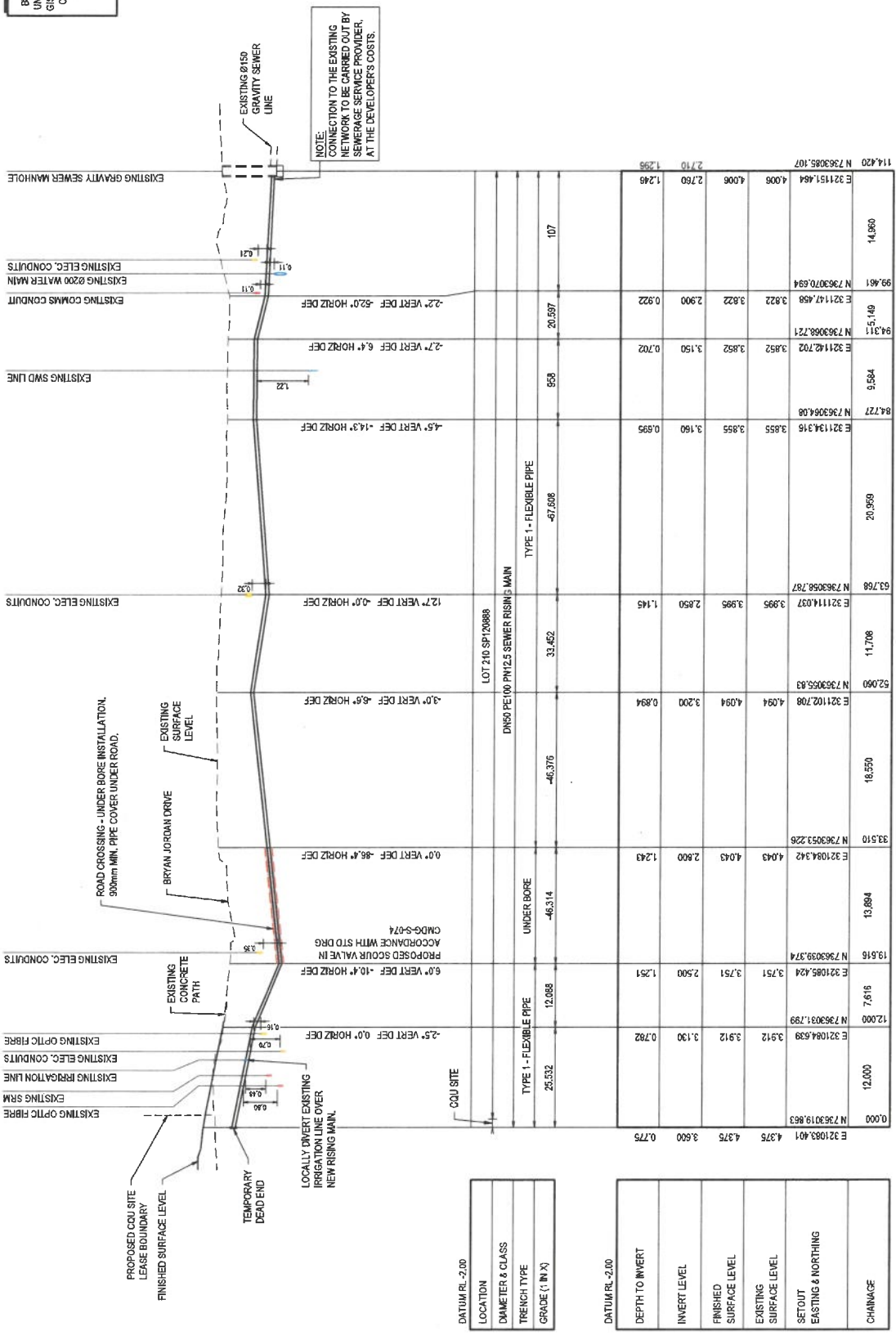
AUTHORISED SIGNATURE	REV	DATE	DATE
[Signature]	2015	04/02/2021	4/02/2021

SCALE: 1:11 AS SHOWN
 PROJ. NO. 45005
 AUTHORIZED: IG
 ISSUE: A



WARNING!
BEWARE OF UNDERGROUND SERVICES THE LOCATIONS OF UNDERGROUND SERVICES HAVE BEEN INTERPOLATED FROM GIC DATA OR KNOWN POSITIONS OF VALVES, MANHOLES ETC. OR INFORMATION SUPPLIED BY SERVICE AUTHORITIES. NO RESPONSIBILITY IS TAKEN FOR THE ACCURACY OF THE INTERPOLATED INFORMATION SUPPLIED. ENSURE ALL SERVICES ARE ACCURATELY LOCATED PRIOR TO COMMENCEMENT OF WORK.

APPROVED
JH 26/07/2021



GRC SEWER RISING MAIN - LONGITUDINAL SECTION
SCALE: 1:250 (H); 1:50 (V)

STATION	ELEVATION (M)	DEPTH (M)	PIPE TYPE	DIAMETER (MM)	LENGTH (M)	VERTICAL CURVE DATA	GRADE (% IN X)
0.000	N 7363019.863		TYPE 1 - FLEXIBLE PIPE	26.532		-2.5° VERT DEF 0.0° HORIZ DEF	
7.61	N 321084.639		TYPE 1 - FLEXIBLE PIPE	12.088		6.0° VERT DEF -10.4° HORIZ DEF	
13.884	N 7363039.374		TYPE 1 - FLEXIBLE PIPE	12.088		6.0° VERT DEF -10.4° HORIZ DEF	
33.510	N 7363033.226		UNDER BORE	-46.314		0.0° VERT DEF -86.4° HORIZ DEF	
46.376	N 7363055.83		DN50 PE100 PNY25 SEWER RISING MAIN	33.462		3.0° VERT DEF -6.6° HORIZ DEF	
52.900	N 7363055.83		DN50 PE100 PNY25 SEWER RISING MAIN	33.462		3.0° VERT DEF -6.6° HORIZ DEF	
59.208	N 321114.037		TYPE 1 - FLEXIBLE PIPE	-67.608		12.7° VERT DEF -0.0° HORIZ DEF	
63.768	N 7363068.787		TYPE 1 - FLEXIBLE PIPE	-67.608		12.7° VERT DEF -0.0° HORIZ DEF	
84.727	N 7363068.787		TYPE 1 - FLEXIBLE PIPE	-67.608		12.7° VERT DEF -0.0° HORIZ DEF	
84.727	N 321194.316		TYPE 1 - FLEXIBLE PIPE	-67.608		4.5° VERT DEF -14.3° HORIZ DEF	
84.727	N 7363068.408		TYPE 1 - FLEXIBLE PIPE	-67.608		4.5° VERT DEF -14.3° HORIZ DEF	
95.84	N 321142.702		TYPE 1 - FLEXIBLE PIPE	-67.608		2.7° VERT DEF 6.4° HORIZ DEF	
95.84	N 7363068.721		TYPE 1 - FLEXIBLE PIPE	-67.608		2.7° VERT DEF 6.4° HORIZ DEF	
99.461	N 7363070.694		TYPE 1 - FLEXIBLE PIPE	-67.608		2.2° VERT DEF -52.0° HORIZ DEF	
99.461	E 321147.458		TYPE 1 - FLEXIBLE PIPE	-67.608		2.2° VERT DEF -52.0° HORIZ DEF	
107	N 7363085.107		TYPE 1 - FLEXIBLE PIPE	-67.608		2.2° VERT DEF -52.0° HORIZ DEF	
107	E 321151.464		TYPE 1 - FLEXIBLE PIPE	-67.608		2.2° VERT DEF -52.0° HORIZ DEF	
114.420	N 7363085.107		TYPE 1 - FLEXIBLE PIPE	-67.608		2.2° VERT DEF -52.0° HORIZ DEF	
114.420	E 321151.464		TYPE 1 - FLEXIBLE PIPE	-67.608		2.2° VERT DEF -52.0° HORIZ DEF	

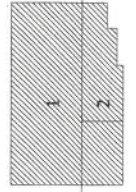
DATUM RL -2.00

LOCATION
DAMETER & CLASS
TRENCH TYPE
GRADE (% IN X)

DATUM RL -2.00

DEPTH TO INVERT
INVERT LEVEL
FINISHED SURFACE LEVEL
EXISTING SURFACE LEVEL
SETOUT EXISTING & NOTHING
CHARGE

KEYPLAN



FOR CONSTRUCTION

AMENDMENTS

No.	Description	Date
1	ISSUED FOR CONSTRUCTION	

Cardno
Civil Engineering
Tel: 07 3389 8822 Fax: 07 3389 8772
The Engineer's professional seal is required for the issuance of a Certificate of Approval. It is the Engineer's responsibility to ensure that the design complies with the relevant standards and codes of practice. The Engineer is not responsible for any errors or omissions in the design or for any consequences arising from the use of the design.

CONSULTANTS
Architect: **Probit**
Structural Engineer: **Probit**
Electrical Engineer: **Probit**
Mechanical Engineer: **Probit**
Civil Engineer: **Probit**

CLIENT
CQU UNIVERSITY AUSTRALIA
CQU-GLD-015-GN-CIV-063

COMPLETERS
FDC Construction & Fitout

PROJECT
CQU UNIVERSITY - GLADSTONE
SCHOOL OF MANUFACTURING
SEWER RISING MAIN
LONGITUDINAL SECTION

SCALE
SCALE (H): 1:250
SCALE (V): 1:50

DATE
04/07/2021

ISSUE
A

WATER MAIN CONSTRUCTION NOTES

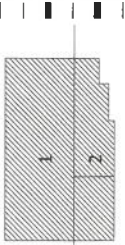
1. WORKS MUST BE EXECUTED IN ACCORDANCE WITH THE CMDS WATER SUPPLY NETWORK D11 DESIGN GUIDELINES, SPECIFICATIONS AND GPC AND GRC REQUIREMENTS.
2. UNLESS SPECIFIED OTHERWISE ALL MATERIALS AND WORK SHALL COMPLY WITH THE RELEVANT AUSTRALIAN STANDARDS.
3. THE CONNECTION OF ALL NEW WATER WORKS TO THE EXISTING WATER NETWORK SHALL BE MADE BY THE GPC STAFF AT THE DEVELOPERS COST.
4. CONFIRM CONNECTION LEVELS TO EXISTING WATER MAIN PRIOR TO COMMENCING EXCAVATION.
5. THE CONSTRUCTION OF THE WATER RETICULATION WORK MUST BE SUPERVISED BY AN ENGINEER WHO HAS RELEVANT REQA REGISTRATION.
6. ALL WORKS SHALL BE CARRIED OUT BY A QUALIFIED CONTRACTOR.
7. ALL PIPES AND MATERIALS SHALL COMPLY WITH REQUIREMENTS OF THE CMDS PURCHASE SPECIFICATION LISTED IN ANNEXURE D11B.
8. ALL NEW RETICULATION WORKS REQUIRE BACTERIAL AND PRESSURE TESTING PRIOR TO LIVE CONNECTION.
9. ALL WORK SHALL COMPLY WITH THE REQUIREMENTS OF THE QUEENSLAND WORK HEALTH AND SAFETY ACT, CONTACT THE DIVISION OF WORK HEALTH AND SAFETY FOR INFORMATION, PHONE 1300 362 128.
10. SERVICES WHERE SHOWN ARE APPROXIMATE ONLY. EXACT LOCATION AND DEPTH TO SERVICES ARE TO BE CONFIRMED WITH RELEVANT AUTHORITIES AND ON SITE BY THE CONTRACTOR PRIOR TO COMMENCING WORKS.
11. HANDLING OF ASPES/CEMENT PIPES SHALL BE CARRIED OUT IN ACCORDANCE WITH WORK HEALTH AND SAFETY (WH&S) ACT 2011, THE WH&S QUEENSLAND CODE OF PRACTICE AND GPC & GRC REQUIREMENTS AS A MINIMUM.
12. UTILITY AUTHORITIES SERVICES ARE SHOWN APPROXIMATELY AS TAKEN OFF DUAL BEFORE YOU OBTAIN INFORMATION ON THE LOCATION MUST BE CHECKED WHEN WORKING IN THE VICINITY AND AROUND UNDERGROUND SERVICES.
13. THESE SERVICES, IT IS NECESSARY THAT THE CONTRACTOR CONFIRM THE LOCATION OF OTHER AUTHORITIES UNDERGROUND SERVICES.
14. CONTRACTOR TO TAKE APPROPRIATE ACTION TO PROTECT AND MAINTAIN GRC'S AND OTHER AUTHORITIES' EXISTING SERVICES.
15. RESTORE ALL SURFACES TO MATCH PRE-EXISTING SURFACES UNLESS NOTED OTHERWISE.
16. REMOVE AND REINSTATE OBJECTS ALONG LINE OF CONSTRUCTION SUCH AS SIGNS, FENCES, ETC.
17. BENCH MARK AND LEVELS TO AHD.
18. ALL DIMENSIONS ARE IN MILLIMETRES UNLESS OTHERWISE SPECIFIED.
19. REQUIREMENTS SPECIFIED IN THE CMDS NOTES AND STANDARDS.
20. PROJECT SPECIFIC NOTES AND REQUIREMENTS MUST BE EQUIVALENT OR EXCEED THE MINIMUM MANDATORY REQUIREMENTS SPECIFIED IN THE CMDS NOTES AND STANDARDS.
21. THE DESIGN AND CONSTRUCTION OF THE WORKS SHALL COMPLY WITH ALL QUEENSLAND LEGISLATION, BACTERIOLOGICAL AND PRESSURE TESTING ARE REQUIRED ON ALL NEW MAINS FOLLOWING SATISFACTORY COMPLETION OF SWABBING/FULSHING IN ACCORDANCE WITH THE CMDS WATER SUPPLY NETWORK D11 DESIGN GUIDELINES ANNEXURE D11E.
22. PRESSURE TESTING SHALL NOT BE CARRIED OUT DURING WET WEATHER UNLESS OTHERWISE APPROVED BY WATER SERVICE PROVIDER.
23. ALL PAVERS MARKERS SHALL COMPLY WITH THE CMDS SPECIFICATION FOR PAVEMENT MARKINGS C261.
24. REB PAINTING (WHITE - VALVES, YELLOW - HYDRANTS), FOR IDENTIFICATION OF VALVES AND HYDRANTS, IS TO BE CARRIED OUT ON PAVED AREAS TO THE ASSET, PAINTED AREA IS TO BE 300MM WIDE.
25. IN REAS TO BE PAINTED, REB PAINT IS TO BE USED FOR ALL VALVES, AIR VALVES AND SCOUR VALVES.
26. DRAWINGS TO ROBUST SHALL BE PROVIDED WITH REFLECTIVE MARKERS IN ACCORDANCE WITH CMDS STANDARD DRAWINGS.
27. VALVES AND HYDRANTS TO BE INSTALLED IN ACCORDANCE WITH STD. DWG. CMDS-GH-080 AND TO COMPLY WITH THE CMDS PURCHASE SPECIFICATION LISTED IN ANNEXURE D11B.
28. HYDRANT AND VALVE BOXES SHALL BE AN APPROVED CAST IRON (TRAFFICABLE AREAS) AND PRE-CAST CONCRETE SURROUND OR POLYETHYLENE (BOX AND SURROUND) (OTHER AREAS). THE SURROUNDS ARE TO BE FINISHED AT GROUND SURFACE LEVEL. REFER CMDS STANDARD DRAWING CMDS-WH-061. MATERIALS USED ARE TO BE IN ACCORDANCE WITH THE CMDS PURCHASE SPECIFICATIONS APPENDIX B.
29. COVERS SHALL BE FINISHED FLUSH WITH THE SURFACE IN ROADWAYS, FOOTPATHS AND PAVED SURFACES. ELSEWHERE, COVERS SHALL BE FINISHED 25MM ABOVE THE SURFACE OF THE GROUND, TO AVOID THE ENTRY OF SURFACE WATER.
30. BOLTS IN ABOVE GROUND USES SHALL BE HOT DIP GALVANISED IN ACCORDANCE WITH AS1214, OR 316 STAINLESS STEEL.

ENVIRONMENTAL MANAGEMENT

- E1 CONTACT LOCAL COUNCIL PRIOR TO CONSTRUCTION FOR APPROVAL TO REMOVE OR REPLACE EXISTING TREES.
- E2 ALL TREES AND SHRUBS THAT ARE TO BE RETAINED MUST BE PROTECTED FROM DAMAGE AS DETERMINED BY THE LOCAL COUNCIL.
- E3 NO TREE SHALL BE LOPPED OR REMOVED WITHOUT THE WRITTEN PERMISSION OF THE LOCAL COUNCIL.
- E4 ANY TREE LOPPING REQUIRED SHOULD BE UNDERTAKEN BY AN APPROVED ARBORIST.
- E5 PIPELINES ADJACENT TO SIGNIFICANT TREES MUST BE INSTALLED BY BORING UNLESS OTHERWISE AGREED BY LOCAL COUNCIL.
- E6 FOR TRENCH INSTALLATIONS TREE ROOTS MUST BE EXPOSED BY HAND EXCAVATION. TREE ROOTS MUST BE CUT CLEANLY AND A BITUMINOUS FUNGICIDAL SEALANT APPLIED TO THE CUT SURFACE.
- E7 BACKFILL UNDER TREE ROOTS USING A MIXTURE OF THREE PARTS TOPSOIL TO ONE PART COMPOST, LIGHTLY COMPACTED.
- E8 EXCAVATION UNDER TREE CANOPIES TO BE BACKFILLED AS SOON AS POSSIBLE.
- E9 TOPSOIL AND SUBSOIL MUST BE STOCKPILED SEPARATELY.
- E10 PLACE APPROPRIATE SEDIMENT CONTROLS AROUND SLOPES.
- E11 SOIL MUST NOT BE STOCKPILED WITHIN 5m OF ANY CREEK OR WATER COURSE.
- E12 IF YOU SUSPECT FIRE ANTS ON SITE CALL BIOSECURITY QUEENSLAND ON 13-25-23.
- E13 ALL ENVIRONMENTAL PROTECTION MEASURES SHOULD BE IMPLEMENTED PRIOR TO ANY CONSTRUCTION WORK (INCLUDING CLEARING) COMMENCING.



FOR CONSTRUCTION



CONTACTS
 Project Manager
 Project Engineer
 Project Engineer
 Project Engineer
 Project Engineer
 Project Engineer
 Project Engineer
 Project Engineer
 Project Engineer

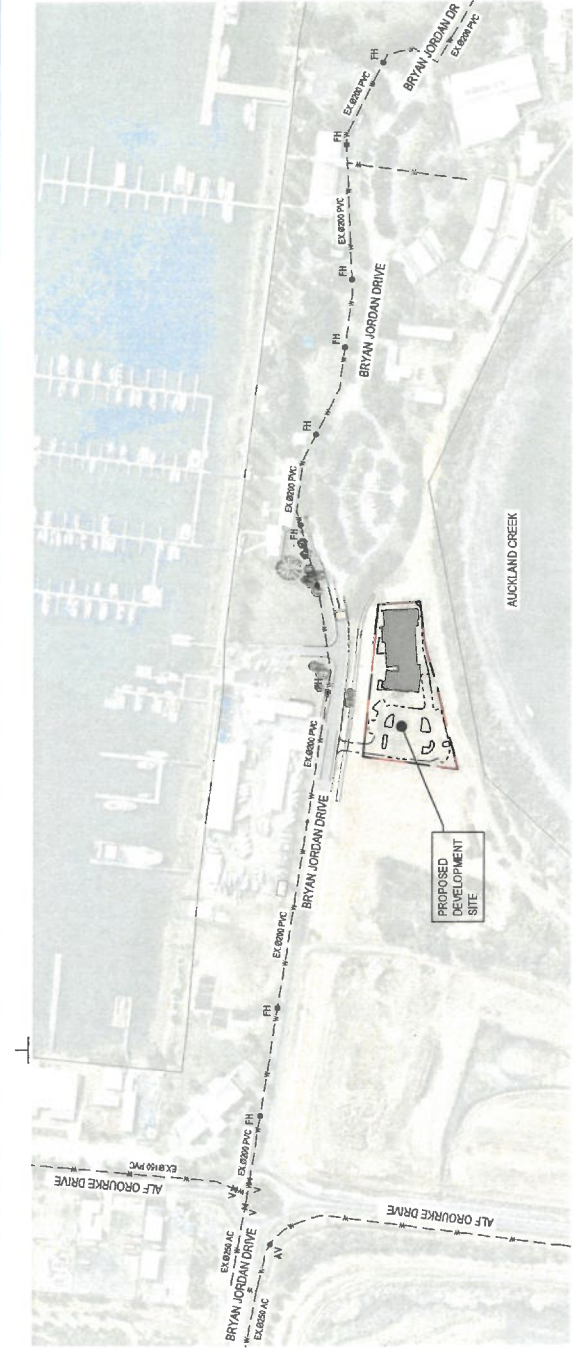
Cardno
 Cardno (Brisbane) Pty Ltd
 Cardno (Brisbane) Pty Ltd
 Cardno (Brisbane) Pty Ltd
 Cardno (Brisbane) Pty Ltd
 Cardno (Brisbane) Pty Ltd
 Cardno (Brisbane) Pty Ltd
 Cardno (Brisbane) Pty Ltd
 Cardno (Brisbane) Pty Ltd
 Cardno (Brisbane) Pty Ltd

CONSULTANTS
 Architect
 Structural Engineer
 Electrical Engineer
 Hydraulic Engineer
 Mechanical Engineer
 Civil Engineer

FDC
 FDC Construction & Fitout
 FDC Construction & Fitout
 FDC Construction & Fitout
 FDC Construction & Fitout

PROJECT
 CQ UNIVERSITY - GLADSTONE
 SCHOOL OF MANUFACTURING
 DRAWING
 WATER RETICULATION
 LOCALITY PLAN & NOTES

APPROVED
 26/07/2021
 AUTHORIZED SIGNATURE
 DATE: 04-02-2021
 AUTHORIZED: [Signature]
 SCALE: A1
 PROJECT NO.: CQ-GLD-015-GN-CIV-070
 DRAWING NO.: [Signature]
 ISSUE: A

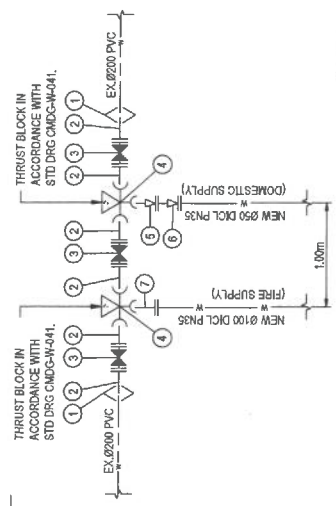


LOCALITY PLAN
 SCALE 1:2000

PIPELINES

1. THE MINIMUM CLEARANCE TO EXISTING SERVICES IS TO BE IN ACCORDANCE WITH THE CMDS WATER SUPPLY NETWORK D11 DESIGN GUIDELINES.
2. CONTRACTOR TO OBTAIN PRIOR APPROVAL FOR ANY MINOR DEVIATIONS REQUIRED TO AVOID EXISTING SERVICES.
3. PRESSURE & BACTERIAL TESTING TO BE CARRIED OUT IN ACCORDANCE WITH CMDS WATER SUPPLY NETWORK D11 DESIGN GUIDELINES.
4. PIPELINES SHALL NOT BE CONSTRUCTED IN UNCONTROLLED FILL. CERTIFICATES SHALL BE PROVIDED CERTIFYING THE FILL IS CONTROLLED FILL COMPACTED TO A DENSITY OF NO LESS THAN 95% OF ITS STANDARD MAXIMUM DRY DENSITY, IN ACCORDANCE WITH A.S. 1289.5.1.1.
5. UNDER BORE UNDER EXISTING ROAD AND FOOTPATH IN ACCORDANCE WITH THE CMDS PURCHASE SPECIFICATIONS LISTED IN ANNEXURE D11B.
6. ALL FLANGES MUST BE PN16 AND IN ACCORDANCE WITH AS4087 UNLESS NOTED OTHERWISE. FLANGES ARE TO BE IN ACCORDANCE WITH THE CMDS PURCHASE SPECIFICATIONS LISTED IN ANNEXURE D11B.
7. PIPE BEDDING MATERIAL SHALL BE COARSE BEDDING SAND OR OTHER LOCAL GOVERNMENT APPROVED SOURCE.
8. MINIMUM DEPTH OF COVER TO WATER MAINS TO BE 900mm FOR ROAD PAVEMENTS AND 600mm ELSEWHERE.
9. PIPE MARKING AND SLEEVING COLOUR SHALL BE BLUE.
10. ALL DUCTILE IRON PIPES AND FITTINGS SHALL BE WRAPPED, TAPPED AND SEALED COMPLETELY WITH POLYETHYLENE SHEETING WITH A MINIMUM OVERLAP OF 150MM.
11. ALL PIPES AND FITTINGS SHALL BE PURCHASED AND NON-FLANGED FITTINGS MUST BE PAISE AND COMPLY WITH AS 2280. FITTINGS ARE TO HAVE A PRESSURE RATING OF 1200 kPa WORKING PRESSURE.
12. PLACE DETECTABLE MARRIER TAPE IN TRENCH APPROX. 300mm ABOVE PIPE.
13. THRUST & ANCHOR BLOCKS
14. PROVIDE ANCHOR AND THRUST BLOCKS IN ACCORDANCE WITH THE CMDS WATER SUPPLY NETWORK D11 DESIGN GUIDELINES. CONCRETE THRUST BLOCKS TO BE CONSTRUCTED IN ACCORDANCE WITH CMDS-WA-041.
15. THE BEARING FACE OF THE THRUST RESTRAINT MUST BE CAST AGAINST UNDISTURBED GROUND.
16. CONCRETE MUST NOT SPILL OVER SOCKET JOINTS.
17. THE PRESSURE TESTING SHALL NOT BE COMMENCED EARLIER THAN SEVEN DAYS AFTER THE LAST CONCRETE THRUST OR ANCHOR BLOCK IN THE SECTION HAS BEEN CAST.
18. VERTICAL THRUST BLOCKS MUST BE EMBEDDED AT A MINIMUM OF 250mm INTO UNDISTURBED GROUND.
19. CONCRETE WORKS SHALL COMPLY WITH THE CMDS STANDARDS. A MINIMUM CONCRETE GRADE N25 IS TO BE USED.
20. THE CONTRACTOR SHALL CONFIRM BEARING CAPACITY PRIOR TO CONSTRUCTION OF THRUST BLOCK.

AS CONSTRUCTED
 AS CONSTRUCTED DOCUMENTATION IS TO BE SUBMITTED TO GPC SHOWING THE ASSET LOCATION AND ATTRIBUTES OF PIPELINES, FITTINGS AND VALVES TOGETHER WITH OPERATING AND MAINTENANCE MANUALS IN ACCORDANCE WITH REQUIREMENTS AS SPECIFIED IN THE CMDS WATER SUPPLY NETWORK D11 DESIGN GUIDELINES.

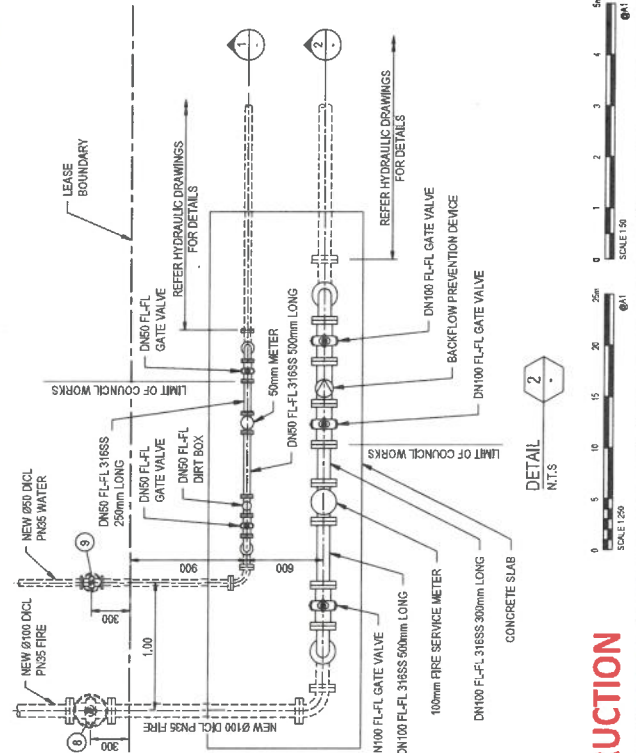
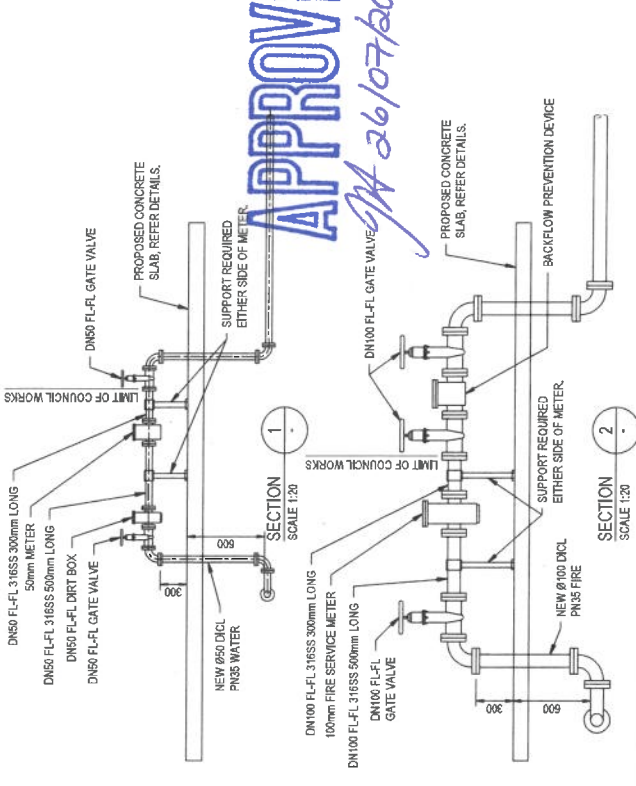
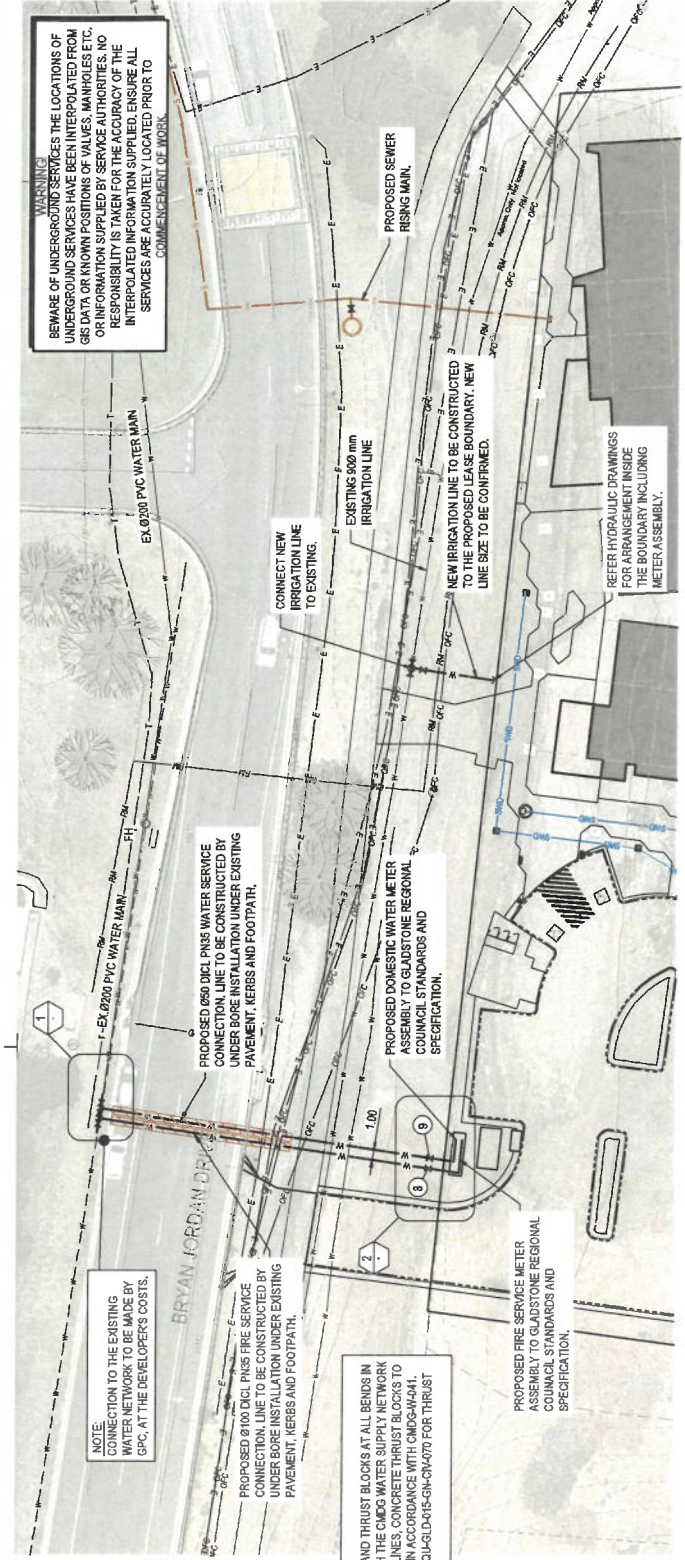


DETAIL 1
N.T.S.

DETAIL ID	SIZE	DESCRIPTION	QTY
1	DN200	GIBBALT JOINT (APPROVED CONNECTOR)	2
2	DN200	FL-SP DI CL. CONNECTOR	6
3	DN200	FL-FL DI CL. GATE VALVE	3
4	DN200x100	SO-SO-SO DI CL. TEE	2
5	M.S.C.	DN100x40 SP-FL TAPER	1
6	M.S.C.	DN80x50 FL-FL TAPER	1
7	DN100	FL-SP DI CL. CONNECTOR	1
8	DN100	FL-FL DI CL. GATE VALVE	1
9	50 Ø	DN60 FL-FL DI CL. GATE VALVE	1

LEGEND

- EXISTING MAJOR CONTOURS
- PROPERTY BOUNDARY
- EXISTING WATERMAIN
- PROPOSED WATERMAIN
- PROPOSED WATER VALVE
- PROPOSED BY TYPE 7m WIDE DRIVEWAY IN ACCORDANCE WITH CMCQ STANDARD DRAWING CMCQ-R-02A
- PROPOSED PAVEMENT - TYPE A REFER TO PAVEMENT DETAIL ON DWG QLD-GLD-015-GN-CV-032
- PROPOSED PAVEMENT - TYPE B REFER TO PAVEMENT DETAIL ON DWG QLD-GLD-015-GN-CV-032
- PROPOSED PAVEMENT - TYPE C REFER TO PAVEMENT DETAIL ON DWG QLD-GLD-015-GN-CV-032



FOR CONSTRUCTION

DATE: 04-03-2021
 DRAWING NO: CMCQ-WA-41
 PROJECT: CMCQ-WA-41
 SCALE: As Shown
 AUTHORISED SIGNATURE: [Signature]
 AUTHORIZED: LG
 DATE: 04/03/2021
 ISSUE: A

FDC
 FDC Construction & Fitout
 PROJECT: CQ UNIVERSITY - GLADSTONE SCHOOL OF MANUFACTURING
 DRAWING: WATER RETICULATION LAYOUT PLAN

University AUSTRALIA
 CLIENT: CQ UNIVERSITY - GLADSTONE SCHOOL OF MANUFACTURING
 PROJECT: CQ UNIVERSITY - GLADSTONE SCHOOL OF MANUFACTURING
 DRAWING: WATER RETICULATION LAYOUT PLAN
 CMCQ-WA-41

Cardno
 CONSULTANTS: [List of consultants]
 ARCHITECT: [List of architects]
 CIVIL ENGINEER: [List of engineers]
 ELECTRICAL ENGINEER: [List of engineers]
 MECHANICAL ENGINEER: [List of engineers]
 STRUCTURAL ENGINEER: [List of engineers]
 TRAFFIC ENGINEER: [List of engineers]
 WATER ENGINEER: [List of engineers]

FOR CONSTRUCTION

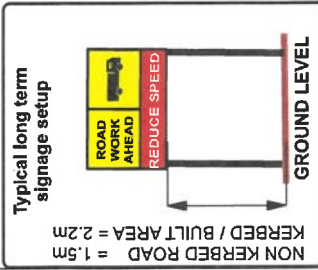
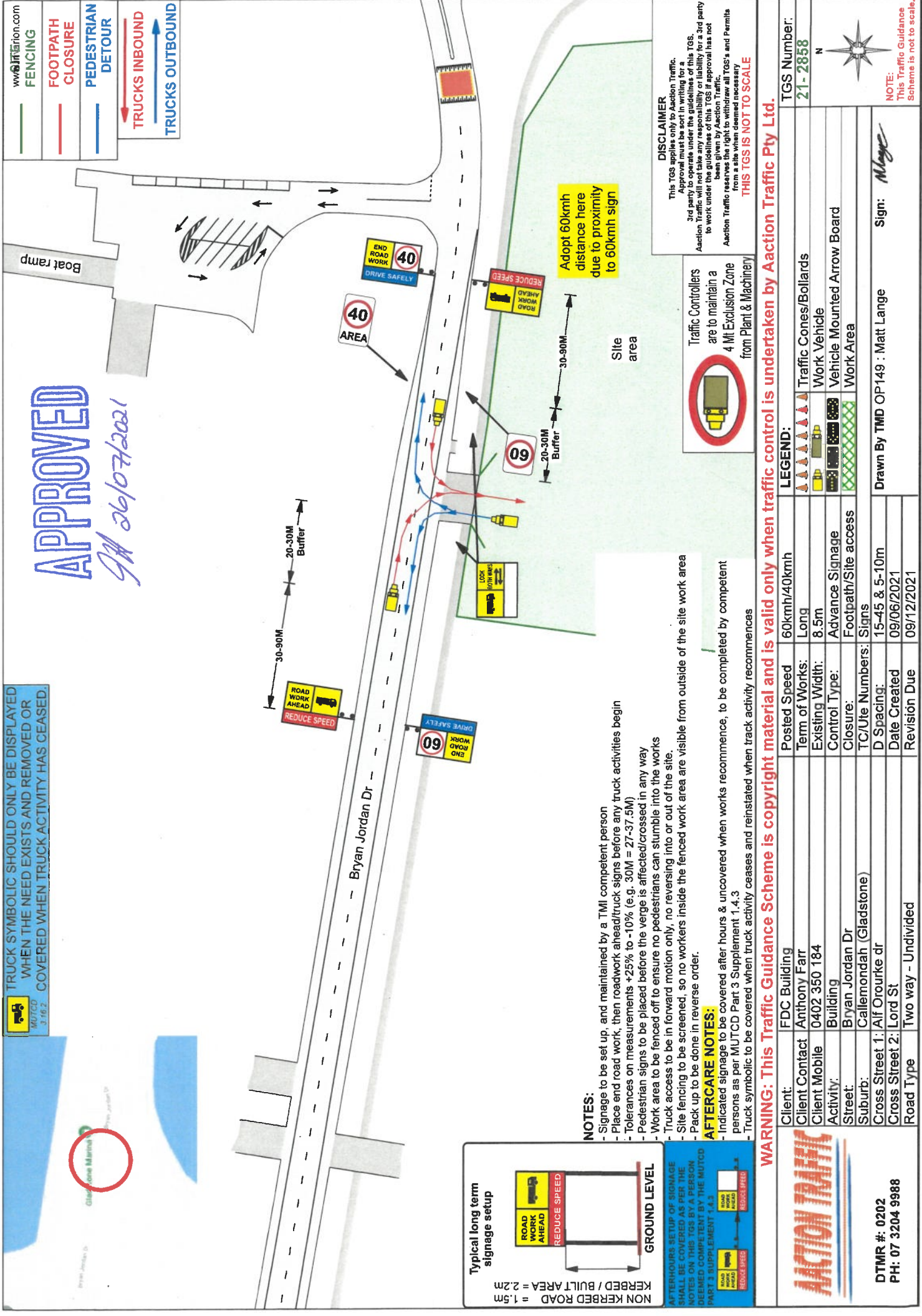
DATE: 04/03/21
 DRAWING NO: CMCQ-WA-41
 PROJECT: CMCQ-WA-41
 SCALE: As Shown
 AUTHORISED SIGNATURE: [Signature]
 AUTHORIZED: LG
 DATE: 04/03/2021
 ISSUE: A

TRUCK SYMBOLIC SHOULD ONLY BE DISPLAYED WHEN THE NEED EXISTS AND REMOVED OR COVERED WHEN TRUCK ACTIVITY HAS CEASED.

www.actiontraffic.com
FENCING
FOOTPATH CLOSURE
PEDESTRIAN DETOUR
TRUCKS INBOUND
TRUCKS OUTBOUND

APPROVED

26/07/2021



AFTERHOURS SETUP OF SIGNAGE SHALL BE COVERED AS PER THE NOTES ON THIS TGS BY A PERSON DEEMED COMPETENT BY THE MUTCD PART 3 SUPPLEMENT 1.4.3

NOTES:

- Signage to be set up, and maintained by a TMI competent person
- Place end road work, then roadwork ahead/truck signs before any truck activities begin
- Tolerances on measurements +25% to -10% (e.g. 30M = 27-37.5M)
- Pedestrian signs to be placed before the verge is affected/crossed in any way
- Work area to be fenced off to ensure no pedestrians can stumble into the works
- Truck access to be in forward motion only, no reversing into or out of the site.
- Site fencing to be screened, so no workers inside the fenced work area are visible from outside of the site work area
- Pack up to be done in reverse order.

AFTERCARE NOTES:

- Indicated signage to be covered after hours & uncovered when works recommence, to be completed by competent persons as per MUTCD Part 3 Supplement 1.4.3
- Truck symbolic to be covered when truck activity ceases and reinstated when track activity recommences

Client: FDC Building		Posted Speed: 60kmh/40kmh
Client Contact: Anthony Farr		Term of Works: Long
Client Mobile: 0402 350 184		Work Vehicle: Traffic Cones/Bollards
Activity: Building		Vehicle Mounted Arrow Board: Vehicle Mounted Arrow Board
Street: Bryan Jordan Dr		Work Area: Work Area
Suburb: Callemondah (Gladstone)		TC/Ute Numbers: Signs
Cross Street 1: Alf Orouke dr		D Spacing: 15-45 & 5-10m
Cross Street 2: Lord St		Date Created: 09/06/2021
Road Type: Two way - Undivided		Revision Due: 09/12/2021
DTMR #: 0202 PH: 07 3204 9988		TGS Number: 21-2858

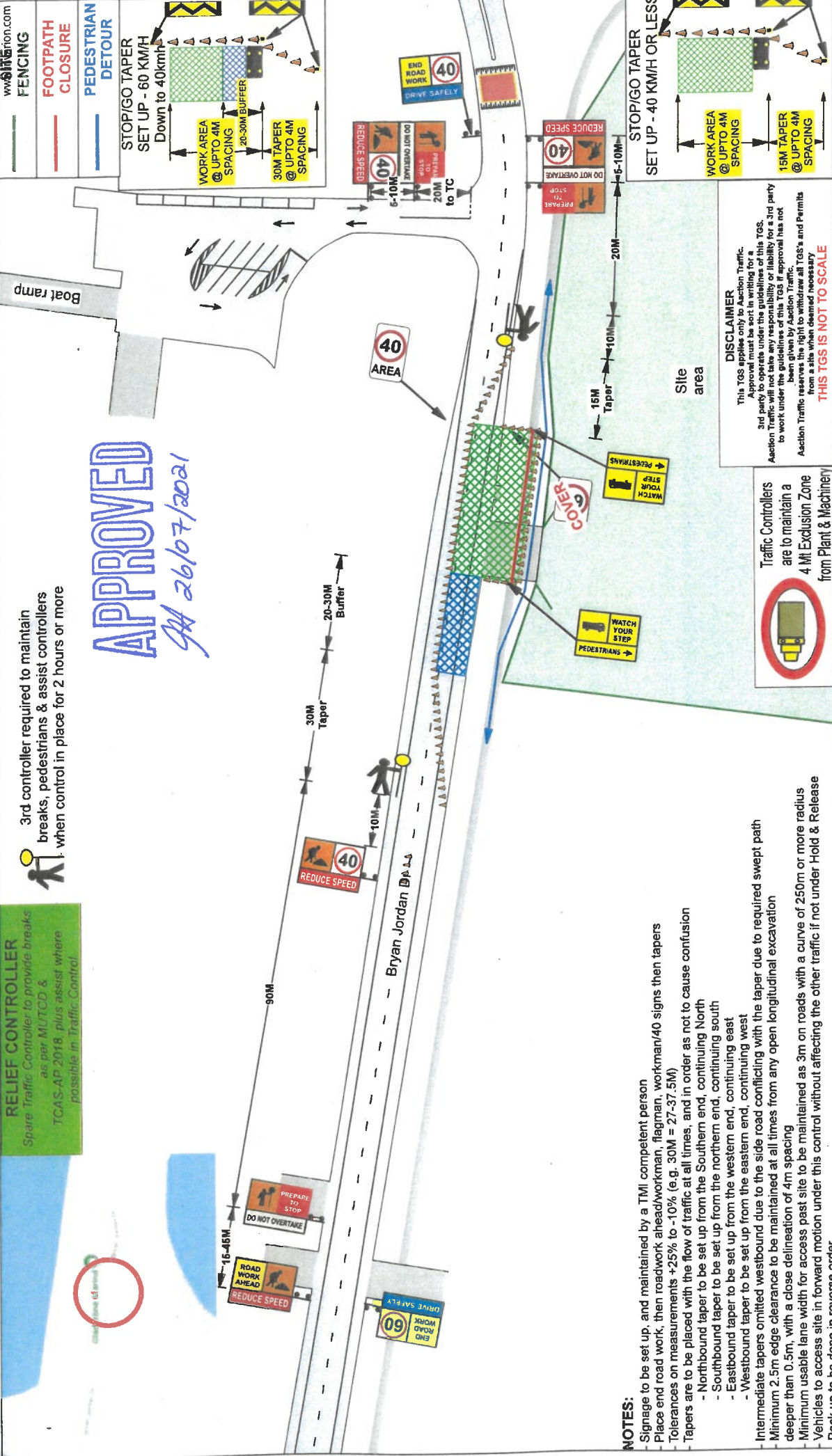
Drawn By TMD OP149 : Matt Lange
 Sign: *M Lange*

NOTE:
 This Traffic Guidance Scheme is not to scale.

RELIEF CONTROLLER
Spare Traffic Controller to provide breaks
as per MUTCD &
TCAS-AP 2018 plus assist where
possible in Traffic Control

3rd controller required to maintain
breaks, pedestrians & assist controllers
when control in place for 2 hours or more

APPROVED
GA 26/07/2021



NOTES:

- Signage to be set up, and maintained by a TMI competent person
- Place end road work, then roadwork ahead/workman, flagman, workman/40 signs then tapers
- Tolerances on measurements +25% to -10% (e.g. 30M = 27-37.5M)
- Tapers are to be placed with the flow of traffic at all times, and in order as not to cause confusion
 - Northbound taper to be set up from the Southern end, continuing North
 - Southbound taper to be set up from the western end, continuing south
 - Eastbound taper to be set up from the western end, continuing east
 - Westbound taper to be set up from the eastern end, continuing west
- Intermediate tapers omitted westbound due to the side road conflicting with the taper due to required swept path
- Minimum 2.5m edge clearance to be maintained at all times from any open longitudinal excavation deeper than 0.5m, with a close delineation of 4m spacing
- Minimum usable lane width for access past site to be maintained as 3m on roads with a curve of 250m or more radius
- Vehicles to access site in forward motion under this control without affecting the other traffic if not under Hold & Release
- Pack up to be done in reverse order.

WARNING: This Traffic Guidance Scheme is copyright material and is valid only when traffic control is undertaken by Action Traffic Pty Ltd.

ACTION TRAFFIC	Client:	FDC Building	Posted Speed	60kmh/40kmh	LEGEND:	TGS Number:	21-2859
	Client Contact	Anthony Fair	Term of Works:	Short	▲▲▲▲▲▲▲▲▲▲	Traffic Cones/Bollards	
	Client Mobile	0402 350 184	Existing Width:	8.5m	🚚	Work Vehicle	
	Activity:	Building	Control Type:	Traffic	🚧	Vehicle Mounted Arrow Board	
	Street:	Bryan Jordan Dr	Closure:	Stop/Go	🚧🚧🚧	Work Area	
	Suburb:	Callemondah (Gladstone)	TC/Ute Numbers:	2 TC, 1 Ute + Relief controller as required			
	Cross Street 1:	Alf Orouke dr	D Spacing:	15-45 & 5-10m			
	Cross Street 2:	Lord St	Date Created	09/06/2021			
	Road Type	Two way - Undivided	Revision Due	09/12/2021			
DTMR #: 0202 PH: 07 3204 9988						Sign:	Mange
						Drawn By TMD OP149 : Matt Lange	

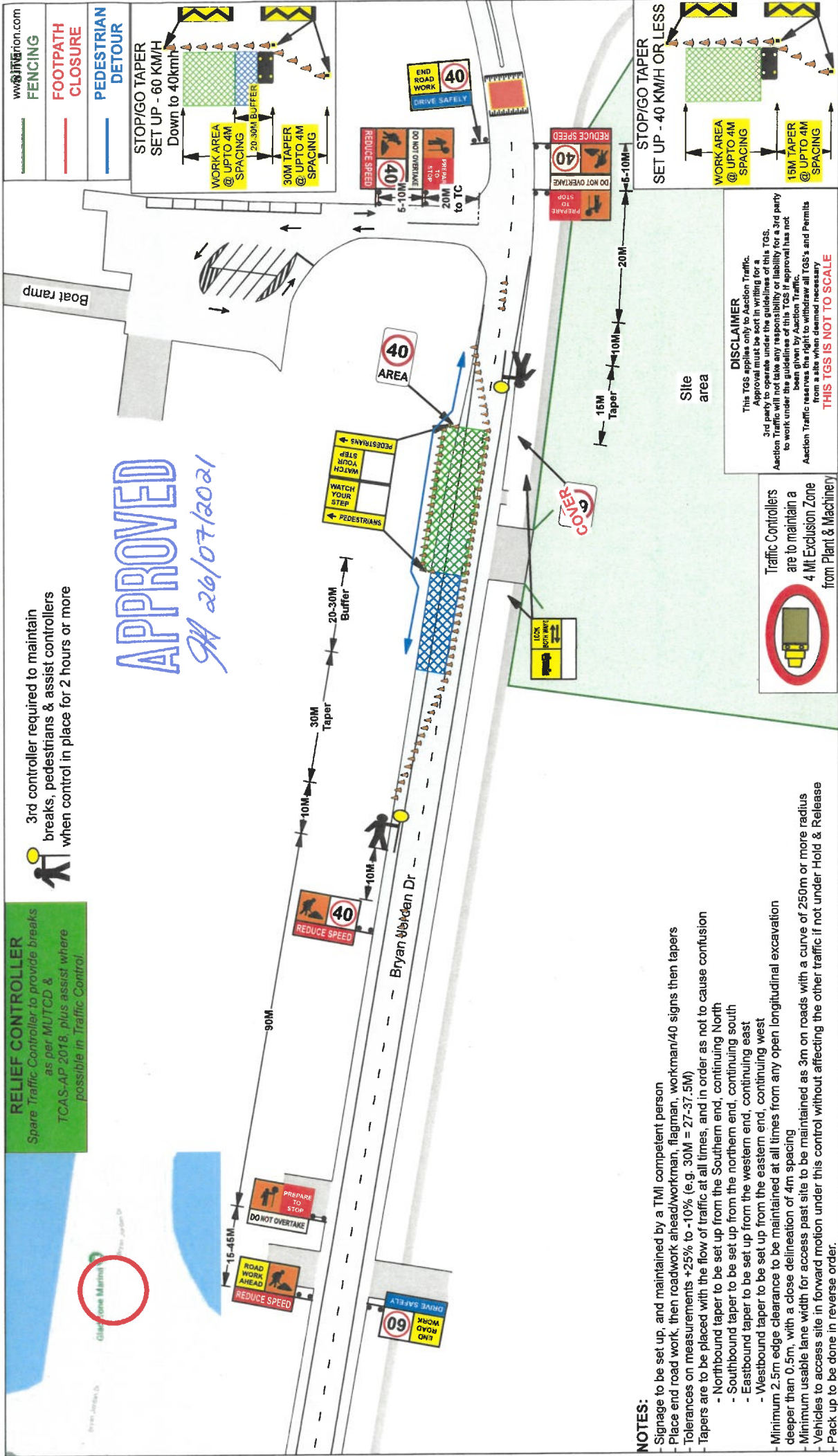


NOTE:
This Traffic Guidance
Scheme is not to scale

RELIEF CONTROLLER
Spare Traffic Controller to provide breaks as per MUTCD & TCAS-AP 2018, plus assist where possible in Traffic Control.

3rd controller required to maintain breaks, pedestrians & assist controllers when control in place for 2 hours or more

APPROVED
JA 26/07/2021



NOTES:

- Signage to be set up, and maintained by a TMI competent person
- Place end road work, then roadwork ahead/workman, flagman, workman/40 signs then tapers
- Tolerances on measurements +25% to -10% (e.g. 30M = 27-37.5M)
- Tapers are to be placed with the flow of traffic at all times, and in order as not to cause confusion
 - Northbound taper to be set up from the Southern end, continuing North
 - Southbound taper to be set up from the northern end, continuing south
 - Eastbound taper to be set up from the western end, continuing east
 - Westbound taper to be set up from the eastern end, continuing west
- Minimum 2.5m edge clearance to be maintained at all times from any open longitudinal excavation deeper than 0.5m, with a close delineation of 4m spacing
- Minimum usable lane width for access past site to be maintained as 3m on roads with a curve of 250m or more radius
- Vehicles to access site in forward motion under this control without affecting the other traffic; if not under Hold & Release
- Pack up to be done in reverse order.

WARNING: This Traffic Guidance Scheme is copyright material and is valid only when traffic control is undertaken by Action Traffic Pty Ltd.

Client:	FDC Building	Posted Speed	60kmh/40kmh
Client Contact:	Anthony Farr	Term of Works:	Short
Client Mobile:	0402 350 184	Existing Width:	8.5m
Activity:	Building	Control Type:	Traffic
Street:	Bryan Jordan Dr	Closure:	Stop/Go
Suburb:	Callemondah (Gladstone)	TC/UTE Numbers:	2 TC, 1 Ute + Relief controller as required
Cross Street 1:	Alf Orourke dr	D Spacing:	15-45 & 5-10m
Cross Street 2:	Lord St	Date Created:	09/06/2021
Road Type	Two way - Undivided	Revision Due	09/12/2021

DTMR #: 0202
PH: 07 3204 9988

Drawn By TMD OP149 : Matt Lange
Sign: *Mage*

LEGEND:

- Traffic Cones/Bollards
- Work Vehicle
- Vehicle Mounted Arrow Board
- Work Area

DISCLAIMER
This TGS applies only to Action Traffic. Approval must be sought in writing for this TGS. Action Traffic will not take any responsibility or liability for a 3rd party to work under the guidelines of this TGS if approval has not been given by Action Traffic. Action Traffic reserves the right to withdraw all TGS's and Permits from a site when deemed necessary. **THIS TGS IS NOT TO SCALE**

TGS Number: 21-2860

NOTE: This Traffic Guidance Scheme is not to scale.

NOTES:

- IT IS THE CONTRACTORS RESPONSIBILITY TO REPAIR OR REPLACE EXISTING SERVICES DAMAGED DURING THE WORKS.
- REPAIR AND MAKE GOOD ANY DAMAGE TO ANY LANDSCAPE WORKS (INCLUDING REMOVAL OF EXCESS MATERIAL) THAT MAY OCCUR DURING ANY WORKS CARRIED OUT.
- TURF EXTENT TO INCLUDE WORKS ASSOCIATED WITH NEW SEWER LINE WORKS TO BOTH THE SOUTHERN AND NORTHERN SIDE OF BRYAN JORDAN DRIVE - REFER CIVIL DRAWING CIV 602 FOR FULL SERVICE EXTENT.

4. Turf extent to include works associated with new water line works to both the southern and northern side of Bryan Jordan Drive

APPROVED

*As amended 26/07/2021
GJA*

STAGE 2 - EXTENT OF WORKS

STAGE 2 - EXTENT OF WORKS

LEASE AREA BOUNDARY

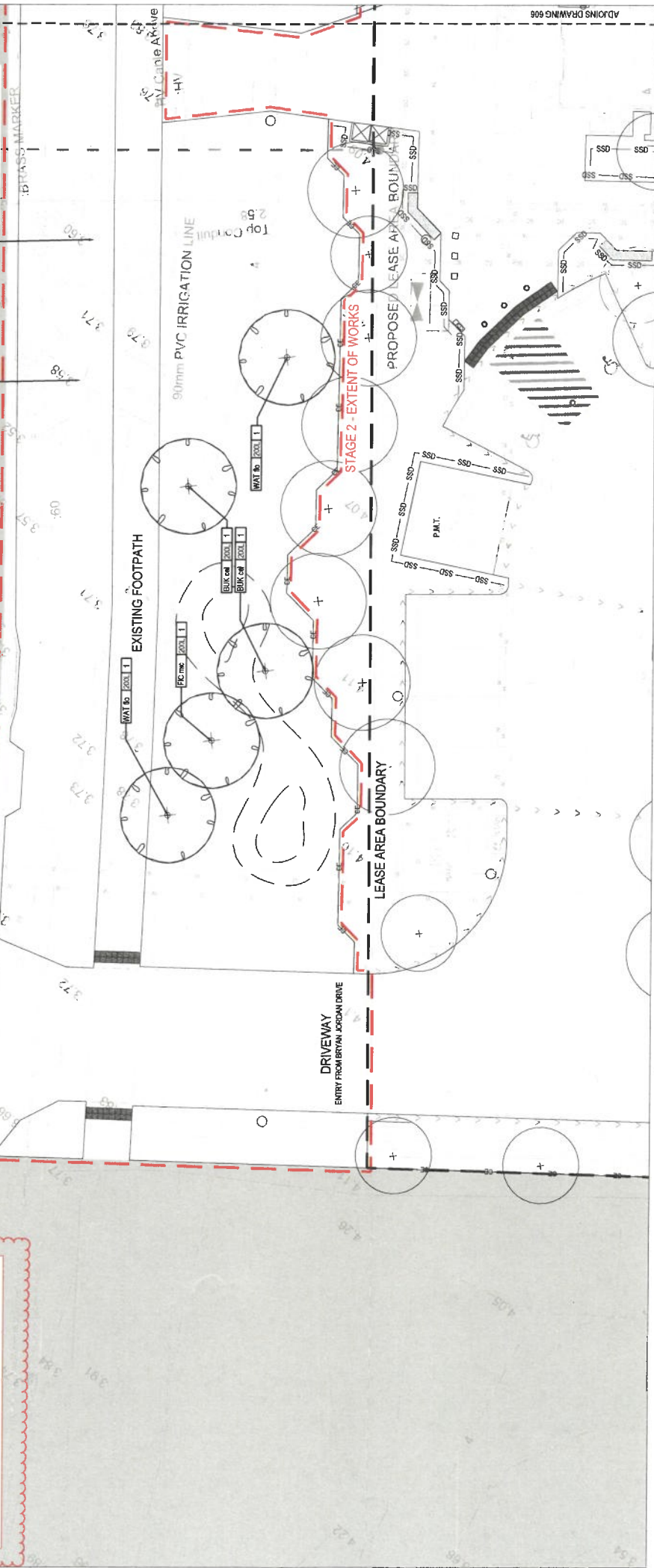
DRIVEWAY ENTRY FROM BRYAN JORDAN DRIVE

EXISTING FOOTPATH

90mm PVC IRRIGATION LINE

EXISTING TREES TO BE RETAINED WHERE POSSIBLE.

EXISTING TREES TO BE RETAINED WHERE POSSIBLE.



827 PLAN



FOR CONSTRUCTION

PEDDLE THORP
architecture | interiors | health | planning
Brisbane
Curtis
University

Tel: (07) 341 9600
E: info@peddleporthorp.com.au
W: peddleporthorp.com.au

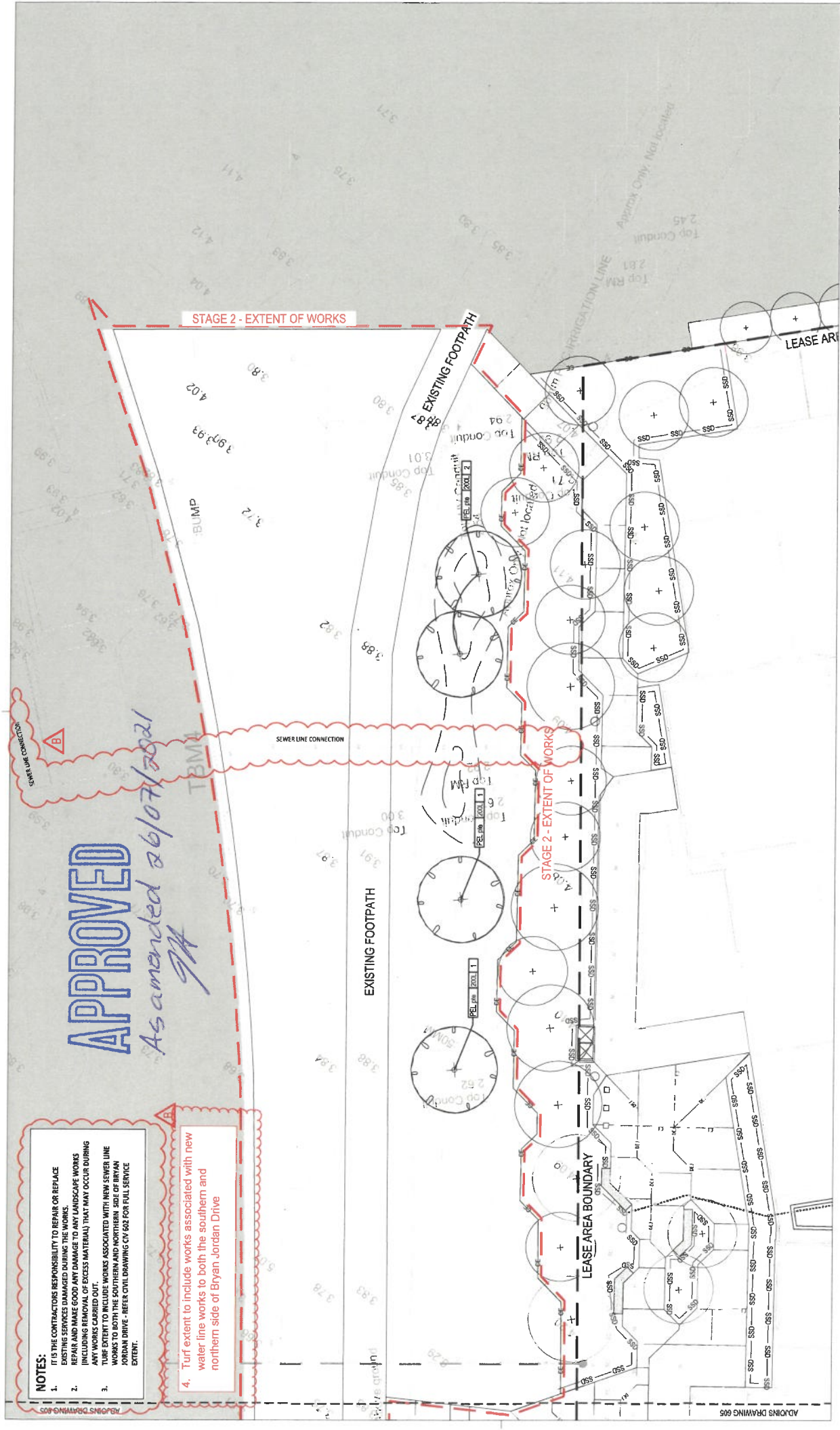


FDC
UNIVERSITY AUSTRALIA
CQU DRAWING NO. CQU-GLD-015-GN-LSS-604

PROJECT: Central Queensland University Gladstone Marina Campus
DRAWING: PLANTING PLAN SHEET 05

DATE: 05/07/21	SCALE: 1:100	PROJ. NO.: CQU-GLD-015	AUTHORISED: PM
DRAWING NO: CQU-GLD-015-GN-LSS-605		ISSUE: B	

ADJOINS DRAWING 606

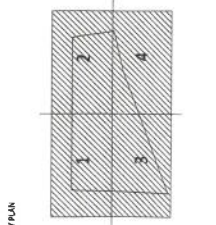


APPROVED

As amended 26/07/2021
GA

- NOTES:**
1. IT IS THE CONTRACTORS RESPONSIBILITY TO REPAIR OR REPLACE EXISTING SERVICES DAMAGED DURING THE WORKS.
 2. REPAIR AND MAKE GOOD ANY DAMAGE TO ANY LANDSCAPE WORKS INCLUDING REMOVAL OF EXCESS MATERIAL THAT MAY OCCUR DURING ANY WORKS CARRIED OUT.
 3. ANY WORKS EXTENT TO INCLUDE WORKS ASSOCIATED WITH NEW SEWER LINE WORKS TO BOTH THE SOUTHERN AND NORTHERN SIDE OF BRYAN JORDAN DRIVE - REFER CIVIL DRAWING CIV 602 FOR FULL SERVICE EXTENT.

4. Turf extent to include works associated with new water line works to both the southern and northern side of Bryan Jordan Drive



FOR CONSTRUCTION

AMENDMENTS

No.	Description	Date
A	ISSUE FOR CONSTRUCTION	01.06.21 JH
B	ISSUE FOR CONSTRUCTION	02.07.21 SE

PEDDLE THORP
 architecture | interiors | health | planning
 Brisbane
 Cairns
 Townsville

T: 41 77 88 1700
 E: info@peddleporthorp.com.au
 W: peddleporthorp.com.au

CONSULTANTS

FDC
 CONSULTANTS

Project: Thors 451 2004 5000
 Central Queensland University - 451 2004 5000
 Contact: 41 7 3948 8022
 Project Engineer: [Name]
 Technical Engineer: [Name]
 Hydraulic Engineer: [Name]
 Landscape Architect: [Name]
 Civil Engineer: [Name]
 Cost Planner: [Name]

CLIENT

Central Queensland University
 Gladstone Marina Campus

DRAWING NO. CCU-GLD-015-GN-LSS-606
ISSUE B

PROJECT Central Queensland University Gladstone Marina Campus
DRAWING PLANTING PLAN SHEET 06

DATE 05.07.21
AUTHOR/ISSUED [Name]
PROJ. NO. CCU-GLD-015
SCALE (H/A1) 1:100

ISSUE B

CCU-GLD-015-GN-LSS-606

PROJECT Central Queensland University Gladstone Marina Campus
DRAWING PLANTING PLAN SHEET 06

CLIENT Central Queensland University
CONSULTANTS FDC
DRAWING NO. CCU-GLD-015-GN-LSS-604

CONSULTANTS

FDC
 CONSULTANTS

Project: Thors 451 2004 5000
 Central Queensland University - 451 2004 5000
 Contact: 41 7 3948 8022
 Project Engineer: [Name]
 Technical Engineer: [Name]
 Hydraulic Engineer: [Name]
 Landscape Architect: [Name]
 Civil Engineer: [Name]
 Cost Planner: [Name]

CONSULTANTS

FDC
 CONSULTANTS

Project: Thors 451 2004 5000
 Central Queensland University - 451 2004 5000
 Contact: 41 7 3948 8022
 Project Engineer: [Name]
 Technical Engineer: [Name]
 Hydraulic Engineer: [Name]
 Landscape Architect: [Name]
 Civil Engineer: [Name]
 Cost Planner: [Name]

CONSULTANTS

FDC
 CONSULTANTS

Project: Thors 451 2004 5000
 Central Queensland University - 451 2004 5000
 Contact: 41 7 3948 8022
 Project Engineer: [Name]
 Technical Engineer: [Name]
 Hydraulic Engineer: [Name]
 Landscape Architect: [Name]
 Civil Engineer: [Name]
 Cost Planner: [Name]

CONSULTANTS

FDC
 CONSULTANTS

Project: Thors 451 2004 5000
 Central Queensland University - 451 2004 5000
 Contact: 41 7 3948 8022
 Project Engineer: [Name]
 Technical Engineer: [Name]
 Hydraulic Engineer: [Name]
 Landscape Architect: [Name]
 Civil Engineer: [Name]
 Cost Planner: [Name]