

# About Gladstone Ports Corporation

Gladstone Ports Corporation is a Government Owned Corporation, responsible for supporting and facilitating the trade of Central Queensland's major resource industries. GPC manages and operates three port precincts - the Port of Rockhampton, the Port of Gladstone and the Port of Bundaberg. GPC strives to be Australia's premier multi-commodity port. As custodians of the waterways, we are committed to sustaining our environment as well as ensuring efficient and effective port services.



## OUR ENVIRONMENTAL VALUES



AIR



LAND



WATER



RESOURCES



BIODIVERSITY

## GPC's Environmental Management System

GPC operates within an Environmental Management System, which provides the framework for how GPC identifies, manages and continually improves the environmental risks of its activities. *This brochure is a part of GPC's Environment Communications Strategy, which in turn forms part of GPC's Environmental Management System. The Environmental Management System outlines the need to identify GPC's stakeholders and how consultation and communication with these stakeholders occurs.*



# Environment Superintendent Message

GPC has been actively working on a number of projects and initiatives to further reduce our environmental risk profile, utilising new information and technology to help us improve the way we operate.

Our Environment Team are resolute in making a difference, operating under the principle that we will sustain our environments and support and enhance the communities in which we operate.

The Team's purpose is to provide services that support and enhance the effective, efficient, environmentally responsible and future-focussed operations of our three ports.

By achieving this, we are contributing to GPC's vision of being Australia's premier multi-commodity port.

The past two years have seen us achieve some fantastic results, such as a 66 per cent reduction in environmental exceedances and enhanced environmental communications. We continue to achieve certification of the ISO14001:2015 Environmental Management System and this is an achievement we strive to maintain and improve.

Recent highlights include the successful "We choose to re-use" initiative, reducing GPC's consumption of single-use water bottles by 93 per cent in six months. This initiative is further supported by the recent implementation of GPC's Waste Strategy, which demonstrates GPC's resolve to enhancing and positively contributing to the environment.

In 2020, GPC commenced major projects including the Clinton Vessel Interaction Project (CVIP), which operated under stringent environmental conditions. CVIP included examples of best practice management with transparent live data available on GPC's website and regular BLOG updates from our Monitoring Specialist.

There was no exceedances of environmental water quality thresholds or complaints as a result of the dredging. The project also incorporated a novel approach to the assessment of fine grain sediments from dredging.

The dredging component of CVIP finished in August 2020 with the entire project due for completion in 2021.



Partnering with our stakeholders to research and educate is always a top priority as we are looking to fortify our legacy as stewards of our ports.

### Future Directions

Looking ahead, GPC are planning some fantastic initiatives such as the Gladstone Marina Plastic Free Pledge, Gladstone Marina Fish Friendly accreditation, a new Port of Gladstone Land Use Plan, Precinct Outlooks and a Climate Change Adaptation Strategy.

Increased engagement and education with stakeholders through continual improvement initiatives continues to be a focus for the business, as well as improving access to monitoring data through GPC's website.

### Relationships and Partnerships

GPC has relationships and works closely with a number of organisations and stakeholders on our environmental management activities, projects and initiatives. These include federal, state and local government regulatory agencies, Ports Australia, Queensland Ports Association, Port Curtis Integrated Monitoring Program, Local Marine Advisory Committees, Traditional Owners, conservation councils, Regional Report Card Partnerships, universities and other research institutions, port users and customers, community groups, Chambers of Commerce, natural resource management groups, and various consultants.

For more information on GPC's environmental management, visit [gpcl.com.au/environment](http://gpcl.com.au/environment).

# Environmental Management

2018-2020



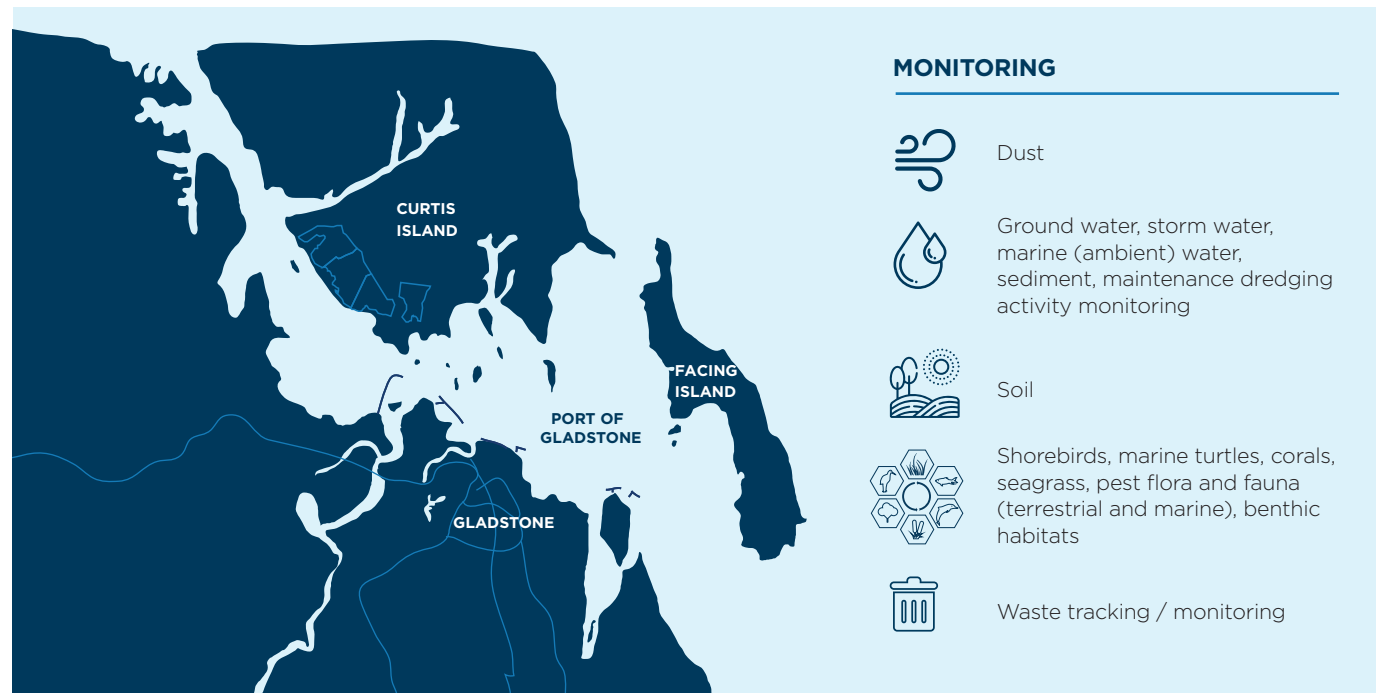


# Port of Gladstone

**Port infrastructure** – 50 km of shipping channel, eight main wharf centres, 20 berths, three GPC operated terminals (RG Tanna Coal Terminal, Auckland Point and Barney Point), 4,448 ha of land, industrial area, Marina, parklands, boat ramps, quarries, reclamation areas, vacant / tenanted / conservation land holdings

**Environment** – Natural deep water port sheltered by continental islands and intertidal zones, which extend to the coastal environment

**Key areas of environmental value** – Great Barrier Reef World Heritage Area, Great Barrier Reef Marine Park, Great Barrier Reef Coast Marine Park, Declared Fish Habitat Areas, Dugong Protection Area B, conservation parks, continental islands, Facing Island, significant ecological communities, semi-evergreen vine thicket, inshore reef communities, tidal wetlands, seagrass, benthic habitats, marine turtles, dugongs, dolphins, shorebirds, commercial and recreational fishing



## HIGHLIGHTS

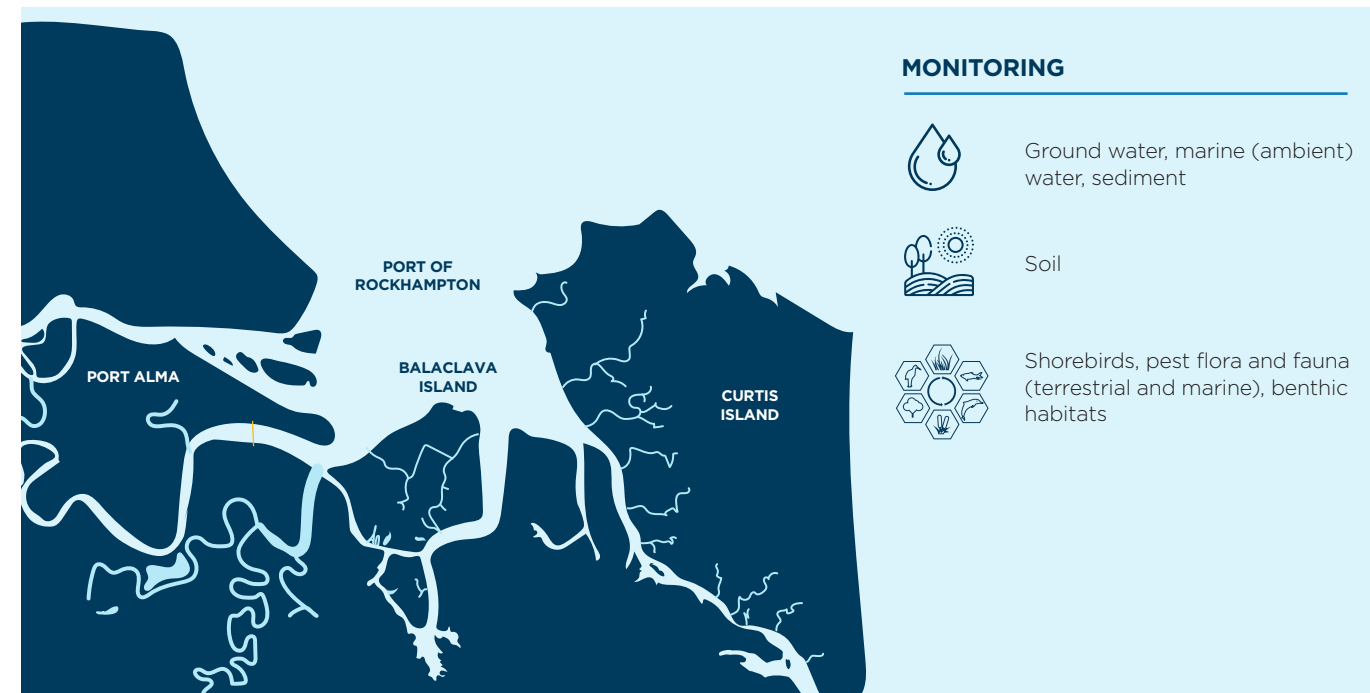
- Five yearly reef surveys completed
- Priority Port Master Plan and Port Overlay for the Priority Port of Gladstone completed
- Participation in a Queensland Port Marine Pest Surveillance Program
- Celebrated 25 years of turtle monitoring at Curtis Island
- Sustainable Sediment Management Project feasibility studies completed
- Port Curtis and Rodds Bay Seagrass in best condition since monitoring commenced in 2002
- 2018 and 2019 Gladstone Healthy Harbour Partnership Report Cards
- Tidal turbine trial completed
- Clinton Vessel Interaction Project commenced
- Sediment Analysis Plan completed
- Ticor Ecological Survey completed
- Gladstone Marina pledges to become plastic free by 2025
- “We choose to re-use” single-use water bottle reduction initiative
- Development of the Long-term Maintenance Dredging Management Plan
- First Point of Entry arrangements in place

# Port of Rockhampton

**Port infrastructure** – 25 km of shipping channel, three wharf facilities, one GPC operated terminal, 5,812 ha of land, industrial area and vacant land

**Environment** – Natural deep water port at the mouth of the Fitzroy River within the channels of Raglan and Casuarina Creeks

**Key areas of environmental value** – Great Barrier Reef World Heritage Area, Great Barrier Reef Marine Park, Great Barrier Reef Coast Marine Park, Declared Fish Habitat Area, Fitzroy River Delta, conservation parks, net free fishing zone, Balaclava Island, intertidal wetlands, benthic habitats, dolphins, marine turtles, shorebirds, recreational fishing



## HIGHLIGHTS

- Development of the Long-term Maintenance Dredging Management Plan
- 2018-2019 Fitzroy Partnership for River Health report card
- Management of pests on Balaclava Island
- Sustainable Sediment Management Project commenced

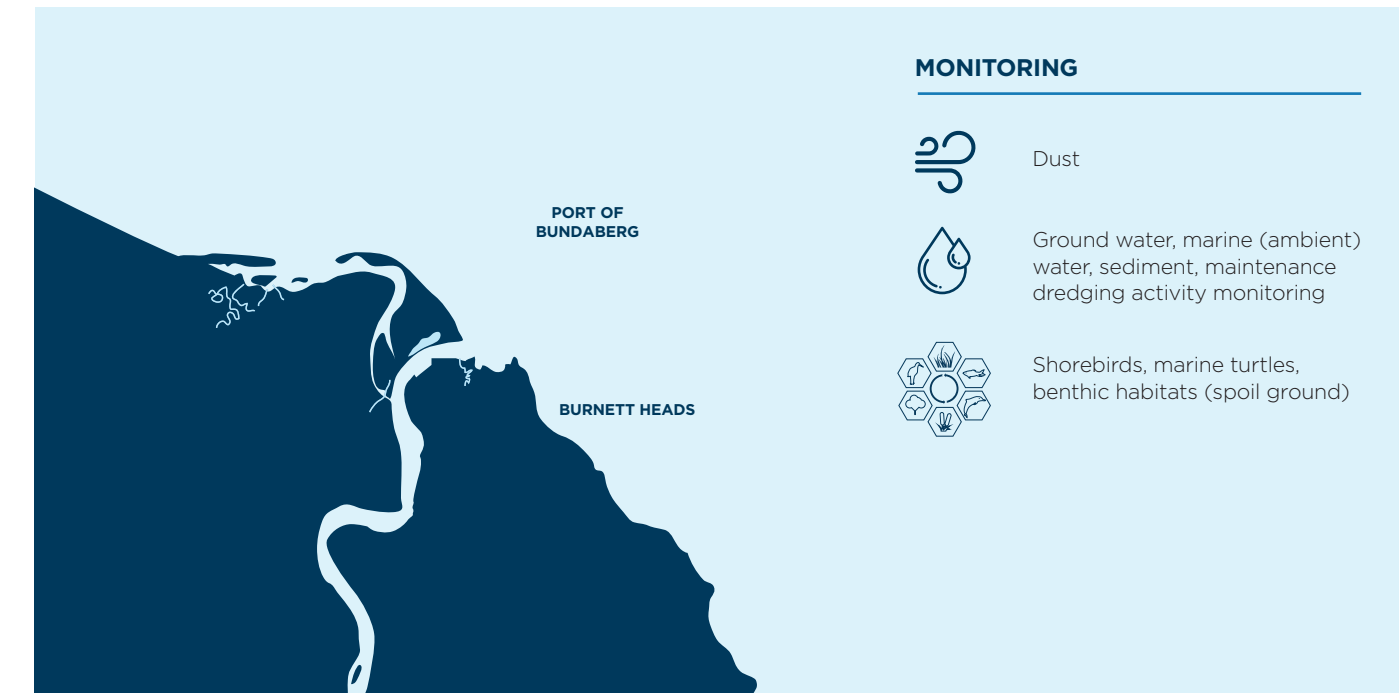


# Port of Bundaberg

**Port infrastructure** – 11 km of shipping channel, two wharves, 507 ha land, Marina, Boat Harbour, Material Relocation Area, industrial / commercial area, parkland and vacant land

**Environment** – Mouth of Burnett River including Wallace Creek and intertidal zones which extends to coastal environments

**Key areas of environmental value** – Mon Repos Conservation Park, Barubbra Island Conservation Park, Great Sandy Marine Park, conservation parks, threatened ecological communities, reef communities, intertidal wetlands, seagrass, benthic habitats, marine turtles, shorebirds, commercial and recreational fishing



## HIGHLIGHTS

- Beach replenishment of the Oaks Beach
- Support for Mon Repos with more than 50 years of monitoring nesting loggerhead turtles
- Shorebird monitoring undertaken
- Sustainable Sediment Management Project commenced
- Sediment Analysis Plan completed
- Benthic habitat monitoring completed



## CRUNCHING THE NUMBERS 2018-2020

37

data requests

45

audits completed

38

environment projects completed

175

environmental site inspections

33%

reduction in environmental complaints

93%

reduction in single-use plastic water bottles

6

community forums

2

Technical Advisory Consultative Committee Meetings

600kg

rubbish collected at Clean Up events

150

approx. active approvals

UP TO 1000

approval conditions

32

governing regulations

66%

decrease in exceedances

9

school and community education engagements