



**Gladstone Ports
Corporation**

Growth, prosperity, community.

Port of Gladstone

PORT INFORMATION HANDBOOK



Contents

About us	3
Gladstone Ports Corporation Limited	3
Port Authority Role at Gladstone	3
Health and Safety	3
Port Information	4
Port of Gladstone	4
Terminal Operators at the Port of Gladstone	5
Facilities	7
Services - Navigation and Operations	8
Regional Harbour Master Role at Port of Gladstone	8
Regional Harbour Master Contact Details	8
Location	8
Vessel Traffic Service – Port Control Role at Port of Gladstone	8
Emergency Services	9
Tugs	9
Pilotage	9
Line Boats	9
Depths of Water	9
Tides	10
Anchorages	10
Bunkering	10
Quarantine Waste	10
Contacts	11
Wharf Centre Drawings	12
Boyne Wharf	12
South Trees East and West	13
Barney Point	14
Auckalnd Point 1-4	15
Auckland Point 2	17
Auckland Point 3	18
Auckland Point 4	19
RGTCT 1, 2, 3, 4	20
RGTCT 1, 2, 3, 4	21
Wiggins Island Coal Export Terminal	22
Fishermans Landing No 1 and No 2	23
Fishermans Landing No 4	24
Fishermans Landing 5	25
APLNG	26
QCLNG	27
GLNG	28

About us

Gladstone Ports Corporation Limited

Formed in 1914, we have been a vital part of the Gladstone community for a century, and the epicentre for economic growth for Queensland.

We are a Company Government Owned Corporation (GOC), responsible for the import of raw material and the export of finished product associated with major industries in the Central Queensland region. On 1 November 2009, pursuant to the Government Owned Corporations (Bundaberg Port) Regulation 2009, the Port of Bundaberg was transferred to and became a business unit of GPC.

We manage and operate three Port precincts - the Port of Gladstone, Port of Rockhampton and Port of Bundaberg.

We play an integral role in planning the future of the Port of Gladstone, Port of Rockhampton and Port of Bundaberg. In consultation with the community, industry and government, we undertake a strategic approach to planning, setting the vision and direction for all three ports for the short and long term.

Port Authority Role at Gladstone

As the port authority for Port of Gladstone, Gladstone Port Corporation's roles include

- facilitating appropriate levels of port security and safety with terminal operators;
- coordinating emergency response;
- protecting the environment by minimising impact of development; and
- being committed to, and having regard for the interests of the community.

Maintaining navigable port depths and pilotage is the responsibility of GPC while port navigation is controlled by Maritime Safety Queensland (MSQ).

Health and Safety

GPC recognises that the health, safety and wellbeing of its personnel are of primary importance. GPC is committed to undertaking its business in a manner that prevents injury or illness to personnel who may be impacted by GPC work activities. We strive for best practice in health & safety management and process safety. GPC is committed to instilling a culture focussed on continuous improvement and sustainability.

Port Information

Port of Gladstone

The Port of Gladstone is one of Australia's finest natural deep-water harbours located 525 kilometres north of Brisbane and is just south of the Tropic of Capricorn at Latitude of 23°49.61'S, Longitude 151°34.6'E.

The Port of Gladstone is Queensland's largest multi-commodity port, handling over 30 different products. Major cargoes include coal, LNG, bauxite, alumina, aluminium and cement. The port has a total throughput of more than 120 million tonnes per annum.

With many natural advantages, such as a deepwater harbour and protected waters; the Port is a convenient point for the worldwide distribution of the wealth of Central Queensland.

Access

Airport

Gladstone has a regional airport which offers domestic services and connecting international services from Brisbane.

Hire cars are available at the airport and must be pre-booked from the hire car companies directly.

Bus

The following coach company has daily services to Gladstone from Brisbane.
Greyhound Australia

Telephone: 1300 473 946

Website: www.greyhound.com.au

Rail

Queensland Rail has passenger rail services to Bundaberg.

Telephone: 1300 131 722

Website: <http://www.queenslandrail.com.au/Pages/Default.aspx>

Port Roads

Port users must comply with applicable Queensland road rules on all Queensland roads.

For heavy vehicles, movements inside the Port secure fenced area are subject to approval from the Port Asset and Infrastructure Manager, telephone +61 7 4976 1332.



Terminal Operators at the Port of Gladstone

Overview

Wharf	Owner	Operator	Cargoes
Boyne Wharf	GPC	BSL	Aluminium Petroleum Coke General Cargo Break Bulk Liquid Pitch
South Trees East	QAL	QAL	Alumina Caustic Soda Bunker Oil
South Trees West	QAL	QAL	Bauxite
Barney Point	GPC	GPC	Magnesia Calcite
Auckland Point No.1	GPC	GPC	Passenger Liner
Auckland Point No. 2	GPC	GrainCorp	Grain
Auckland Point No. 3	GPC	Multi-User	Petroleum Products Caustic Soda LP Gas Break Bulk
Auckland Point No.4	GPC	Multi-User	General Cargo Logs and Woodchip Containers Gypsum Magnetite Break Bulk Scrap Metal
RGTCT No. 1	GPC	GPC	Coal
RGTCT No. 2	GPC	GPC	Coal
RGTCT No. 3	GPC	GPC	Coal
RGTCT No. 4	GPC	GPC	Coal
WICET	WICET	WICET	Coal
Fisherman's Landing No. 1	Rio Tinto Yarwun	Rio Tinto Yarwun	Bauxite
Fisherman's Landing No. 2	Rio Tinto Yarwun	Rio Tinto Yarwun	Alumina Caustic Soda
Fisherman's Landing No. 4	GPC	Multi-User	Cement Clinker Cement Fly Ash Caustic Soda
Fisherman's Landing No. 5	GPC	Multi-User	Liquid Ammonia
APLNG	Origin (37.5%) ConocoPhillips (37.5%) Sinopec (25%).	APLNG	Liquefied Natural Gas
QCLNG	Royal Dutch Shell	QCLNG	Liquefied Natural Gas
GLNG	Santos 30%; Petronas 27.5%; Total 27.5%; Kogas 15%.	GLNG	Liquefied Natural Gas

Trade

Our Ports handle over 30 products, which are transported to more than 30 countries.

The Port of Gladstone is internationally recognised as a major bulk port and our major products include coal, alumina, aluminium and cement.

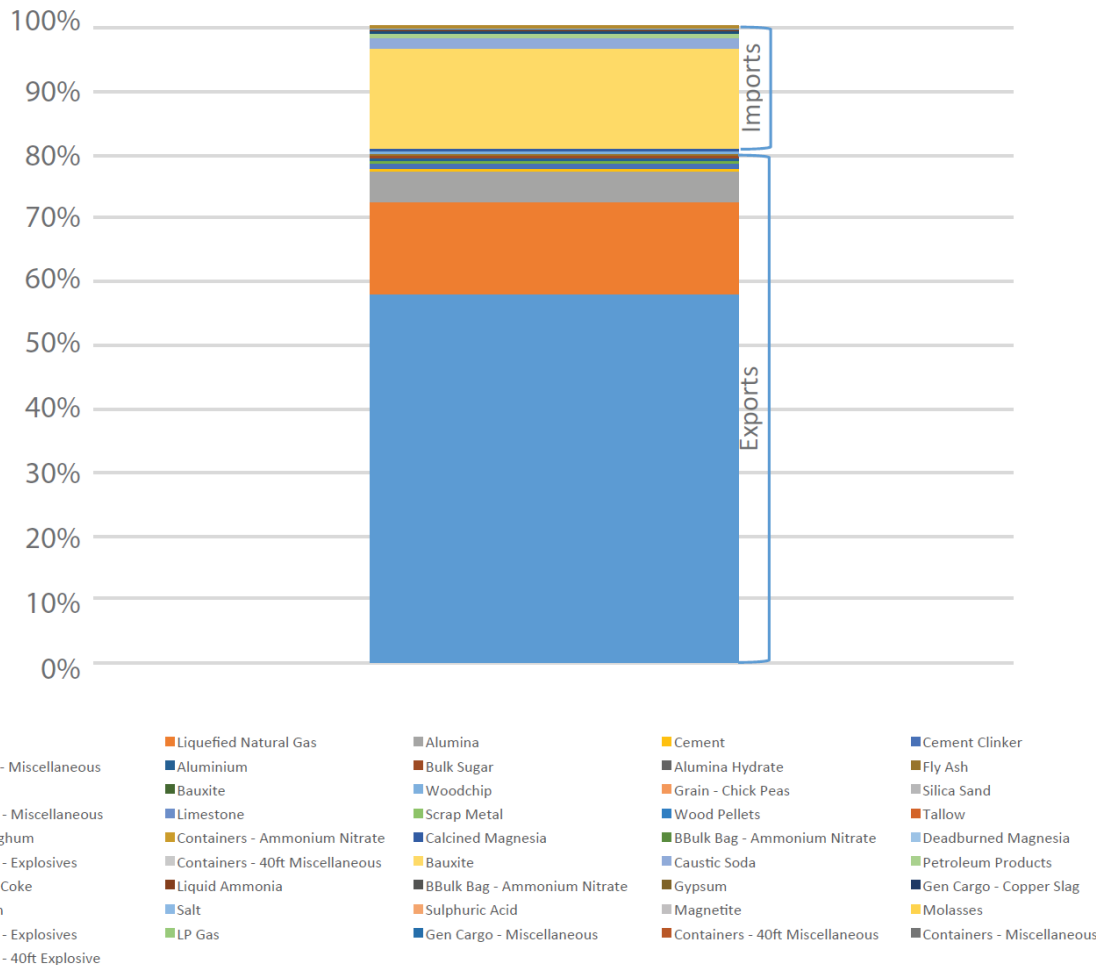
Whilst coal is by far our largest export commodity, we also cater to all forms of containerised and general cargoes. Containerised cargoes are mainly sourced from local major industry and include primarily aluminium, chemicals and cement. General cargoes include breakbulk cargoes such as bagged products and aluminium, project cargo for new/expanding industry and heavy lifts.

Imports

Bauxite	Containers
Caustic soda	Gypsum
Petroleum products	Copper slag
LP gas	Bunker oil
General cargo	Liquid ammonia
Petroleum coke	Magnetite
Liquid pitch	Break bulk

Exports

Coal	Scrap metal
Alumina	Cement
Magnesia	Containers
Grain	Break bulk
Aluminium	Cement clinker
Calcite	Magnesite
Ilmenite	Limestone
Fly ash	Ammonium nitrate
General cargo	Liquefied Natural Gas



Facilities

Berth	Berth Pocket (m LAT)	Berth Pocket Length (m)	Berth Pocket Width (m)	Wharf Face (m)	Wharf Width (m)	Wharf Height Above Lat (m)	Wharf Length incl Mooring Dolphins (m)	Bollard Capacity (t)	Max Vessel DWT (t)	Max Berthing Displacement (t)	Max Vessel LOA (m)	Air Draft (m) LAT	Shiploader Type	Design rate maximum capacity of loader (tph) or (mt3/h)	Length of travel (m)	Power (Shore)	Water RW = Raw Water P = Potable	Fuel BV= Bunkering Vessel T = Truck	Comments	
Boyne Smelter	15.0	355.0	50.0	250.0	40.0	6.1	396.7	W 100 D 60	60,000	75,000	230.0	26	Mobile Gantry Vacuum Ship Unloader	400	200	No	P	BV	W = Wharf D = Dolphins	
South Trees East	(Alumina)	12.8	270.9	50.0	239.0	19.5	356.4	50	110,000	110,000	200.0	15*	Boom/telescopic loader	1,500	192.3	No	RW	BV	*HAT	
	(Caustic /Fuel Oil)	12.8	270.9	50.0	239.0	19.5	356.4	120	110,000	110,000	230.0	NA	300NB marine unloading arm	NA	NA	No	RW	BV		
South Trees West	12.8	270.9	50.0	239.0	19.5	6.0	312.5	120	90,000	110,000	255.0	14.5*	Travelling Gantry Ship unloader	3,300	184	No	RW	BV	*HAT	
Barney Point	15.0	320.0	48.0	206.7	15.8	6.1	457.0	75/50	150,000*	87,000	270.0	17.7	Mobile Gantry Shiploader	2,000	176	No	P	BV	*Draft Restricted	
Auckland Point No 1	11.3	259.0	40.0	173	16.0	5.6	270.0	50	65,000	45,000	238.0	15.9	NA	1,600	106	No	P	BV or T		
Auckland Point No 2	11.3	255.0	40.0	198	22.0	5.5	250.0	50	60,000	32,000	198.0	17.5	Mobile Gantry Shiploader	1,600	118	No	P	BV or T		
Auckland Point No 3	(Fuel)	11.3	230.0	40.0	217	20.0	270.0	50	35,000*	55,000	190.0	NA	NA	NA	NA	No	P	BV or T	* larger dependant on nearby vessel	
	(Containers)	11.3	230.0	40.0	217	20.0	270.0	50	35,000*	55,000	190.0	NA	NA	NA	NA	No	P	BV or T	* larger dependant on nearby vessel	
	(Other)	11.3	230.0	40.0	217	20.0	270.0	50	35,000*	55,000	190.0	NA	NA	NA	NA	No	P	BV or T	* larger dependant on nearby vessel	
Auckland Point No 4	11.4	300.0	40.0*	220.0	33.9	5.5	336.0	100	70,000	85,000	255.0	NA	Mobile Container Crane. Large **	NA	NA	No	P	BV or T	* unrestricted **multi purpose wharf area.	
RG Tanna Coal Terminal No 1	18.8	380.0	70.0	350.5	14.3	12.3	412.7	100/60	220,000	140,000	315.0	18.5	Mobile Gantry Shiploader	6,000	continuous	No	P	BV		
RG Tanna Coal Terminal No 2	18.8	369.4	70.0	384.5	14.3	12.3	384.5	100/60	220,000	140,000	315.0	18.5	Mobile Gantry Shiploader	6,000	continuous	No	P	BV		
RG Tanna Coal Terminal No 3	18.8	388.9	70.0	374.0	14.3	12.3	388.0	100/60	220,000	140,000	315.0	18.5	Mobile Gantry Shiploader	6,000	continuous	No	P	BV		
RG Tanna Coal Terminal No 4	18.8	390.0	70.0	382.0	14.3	12.3	418.0	100/60	220,000	140,000	315.0	18.5	Mobile Gantry Shiploader	6,000	continuous	No	P	BV		
Wiggins Island Coal Terminal	18.8	431.0	71.0	390.5	26.0	11.75	378.0	12* 100t and 14* 60t Quick Release Hooks	220,000	191,000.	320.0	21.0	Longitudinal travel along quay line, shuttle inboard & outboard reach, hoist luffing	8,250	240	Yes	No	Not Permitted	Shore Power – HV Mainline connection and back-up generator.	
Fishermans Landing No 1	(Bauxite)	12.9	296.8	65.0	252.4	19.3	314.1	100	80,000	90,000	235.0	29.5	Mobile Gantry Ship clamshell unloader	1,000	170	No	RW	BV		
Fishermans Landing No 2	(Alumina)	12.9	296.8	65.0	310.2	19.3	310.2	100	80,000	90,000	235.0	29.5	Travelling Gantry Ship unloader	2,4000	170	No	RW	BV		
	(Caustic)	12.9	296.8	65.0	310.2	19.3	310.2	100	80,000	90,000	235.0	29.5	Marine Unloading Arm	1,000	120	No	RW	BV		
Fisherman's Landing No 4		11.2	226.0	50.0	135.0	9.0	234.2	100	25,000	31,000	190.0	20.5	Pivoting Radial Arm	2,000	108	No	limited	BV		
Fisherman's Landing No 5		11.2	374.0	50.0	85.2	20.0	205.7	60	35,000	44,000*	200**	NA	2 x Liquids loading arms 300mm	NA	NA	No	No	BV	* Draft restricted ** longer vessels to be assessed.	
APLNG		13.0	325.0	50.0	97.5	46.0	357.5	150	106,898	143,000	316.0	NA	3 X Liquid 1 X Hybrid (Vapour or Liquid) 1 X Vapour	12,500 m3/hr	NA	No	No	No	Wharf Face (metres): 97.5 (Distance between Fenders for Parallel Body)	
QCLNG		14.0	365.0	60.0	110	30.0	345.0	150	NA	146,950	315.0	NA	NA	12,000m3/hr	NA	No	No	No	Repatriation and shore leave allowed. Lifting of stores not allowed during cargo operations. Standby tug available.	
GLNG		13.0	496.0	100.0	*115	0.0	7.00	**372	150	121,000	153,000	315.0	NA	NA	10,000m3/hr	NA	No	No	No	*Distance between Centre line to centre line of the Extreme Fenders. ** Distance between Centre line to centre line of the Extreme Dolphins

Services - Navigation and Operations

Regional Harbour Master Role at Port of Gladstone

Shipping legislation in Queensland is controlled by the State Government agency, Maritime Safety Queensland (MSQ). It is MSQ's charter to protect Queensland's waterways and the people who use them. MSQ has six regions within Queensland, each of which is controlled by a Regional Harbour Master.

Regional Harbour Masters are responsible for:

- improving maritime safety for shipping and small craft through regulation and education;
- minimising vessel-sourced waste and providing response to marine pollution;
- providing essential maritime services such as Vessel Traffic Services (VTS) and aids to navigation; and
- encouraging and supporting innovation in the maritime industry.

For the most current information on these areas, it is recommended that contact be made with the closest office.

Regional Harbour Master Contact Details

Physical address:	Level 7 22 Yarroon Street Gladstone Queensland 4680
Postal address:	PO Box 123, Gladstone Queensland 4680
Phone:	+61 7-4971 5200
Fax:	+61 7-4971 5243
Email:	RHMGladstone@msq.qld.gov.au

Location

The Port of Gladstone is located in the area surrounding Latitude of 23°49.61'S, Longitude 151°34.6'E.

Vessel Traffic Service – Port Control Role at Port of Gladstone

Operating within the Port Control Centre, the role of the Vessel Traffic Service (VTS) at Gladstone is to coordinate the scheduling of shipping, facilitate the safe and efficient movement of shipping within the pilotage area and coordinate initial emergency response to marine incidents.

Operated by MSQ, VTS provides a 24 hours, seven days a week marine operations service to the port community. For ship traffic scheduling, approval of shipping movements, response to pollution incidents and reporting of defective navigation aids, please direct initial enquiries to the port control centre call sign 'Gladstone VTS' using the contact details below.

In the event of an emergency, VTS is the key notification and communications facility that will activate the appropriate response agencies.

VHF radio:	VHF 13 and 16
Phone:	+61 7 4971 5208
Fax:	+61 7 4971 5212
Email:	VTS-Gladstone@msq.qld.gov.au

Emergency Services

GPC has developed an Emergency Response Plan that covers situations such as cyclones, marine incidents, bomb threats, fire, explosion or fatalities. Copies of the Response Plan are held at GPC's office in the Port, by the Regional Harbour Master and by a number of port users and other key agency contacts.

Where a non-marine incident is caused through the activities of a port user on port land, the initial response is the responsibility of the port user. GPC and VTS can be contacted on VHF 16 and they will coordinate the required response based on procedures detailed in the GPC Emergency Response Plan for the Port of Bundaberg. For local emergency services telephone 000 and specify if fire, ambulance or police are required.

Tugs

Tugs are an aid to the safe and efficient manoeuvring of ships in confined waterways. While it is possible to berth and sail ships in certain tide and weather conditions without the aid of tugs, the experience of the port has dictated the following guidelines to reflect safe practice. Special circumstances may vary the tug requirement from the guidelines indicated in section 9 of the Gladstone Port Procedures Manual.

[Gladstone Port Procedures Manual: Section 9 – Tug procedures](#)

Pilotage

The Transport Operations (Marine Safety) Act 1994 specifies that, unless a current pilotage exemption certificate (PEC) is held by the master of a ship, pilotage is compulsory for:

- a ship that is 50 metres or more
- a vessel towing another vessel where the combined length of the vessels is 50 metres or more
- a ship whose owner or master asks for the services of a pilot
- a ship whose master is directed by the harbour master to use the services of a pilot.
- LNG vessels will require two pilots for the transit

GPC provides pilotage services at the Port of Gladstone. Should a pilot be required, the following periods of notice apply:

Arrivals	48 hours
Removals	24 hours
Departures	24 hours

Further information can be found:

[Gladstone Port Procedures Manual: Section 8 – Pilotage](#)

Line Boats

There are line boats available at Gladstone for berthing operations.

Depths of Water

Please check the latest Notice to Mariners for the Port of Gladstone at: <https://www.publications.qld.gov.au/dataset/gladstone-notice-to-mariners> for the most current depth information.

Tides

The mean spring tide range is 3.24 metres and the mean neap range is 1.54 metres. Further Information can be found at

[Gladstone Port Procedures Manual: Section 6 – Weather information](#)

Anchorage

Vessels arriving off the Port of Gladstone will be assigned a designated anchorage position by VTS, whilst awaiting berthing instructions. These anchorages are shown on the appropriate charts and are identified by either northern or eastern and a numeral.

Further Information can be found at

[Gladstone Port Procedures Manual: Section 5 – Port Infrastructure](#)

Bunkering

Bunkering services are operated by International Bunker Supplies, providing quality marine fuels. The bunker barge is available to service vessels in the inner anchorage and at the outer anchorage weather permitting.

International Bunker Supplies Pty Ltd
+61 3 9211 9333

Quarantine Waste

The provision of adequate port waste reception facilities for ship-generated waste is vital to preventing marine pollution. Gladstone Ports Corporation offers a service, for more information please refer: GPC Waste Service.

Contacts

Volunteer Marine Rescue	+61 7 4972 3333
Gladstone Water Police	+61 7 4971 2650
Gladstone Regional Council	+61 7 4970 0700
Department of Environment and Science	+61 7 4971 6500
Department of Agriculture, Water and Environment	+61 7 4976 6600
Queensland Boating and Fisheries Patrol	+61 7 4971 6523
Australian Border Force	+61 7 4976 3600

Gladstone Seafarers Centre (Port Office)

Physical address – Corner Alf O’Rourke and Bryan Jordan Drive, Gladstone Queensland 4680 Postal address – PO Box 370, The Marina, Gladstone Queensland 4680

Telephone – 4972 0355

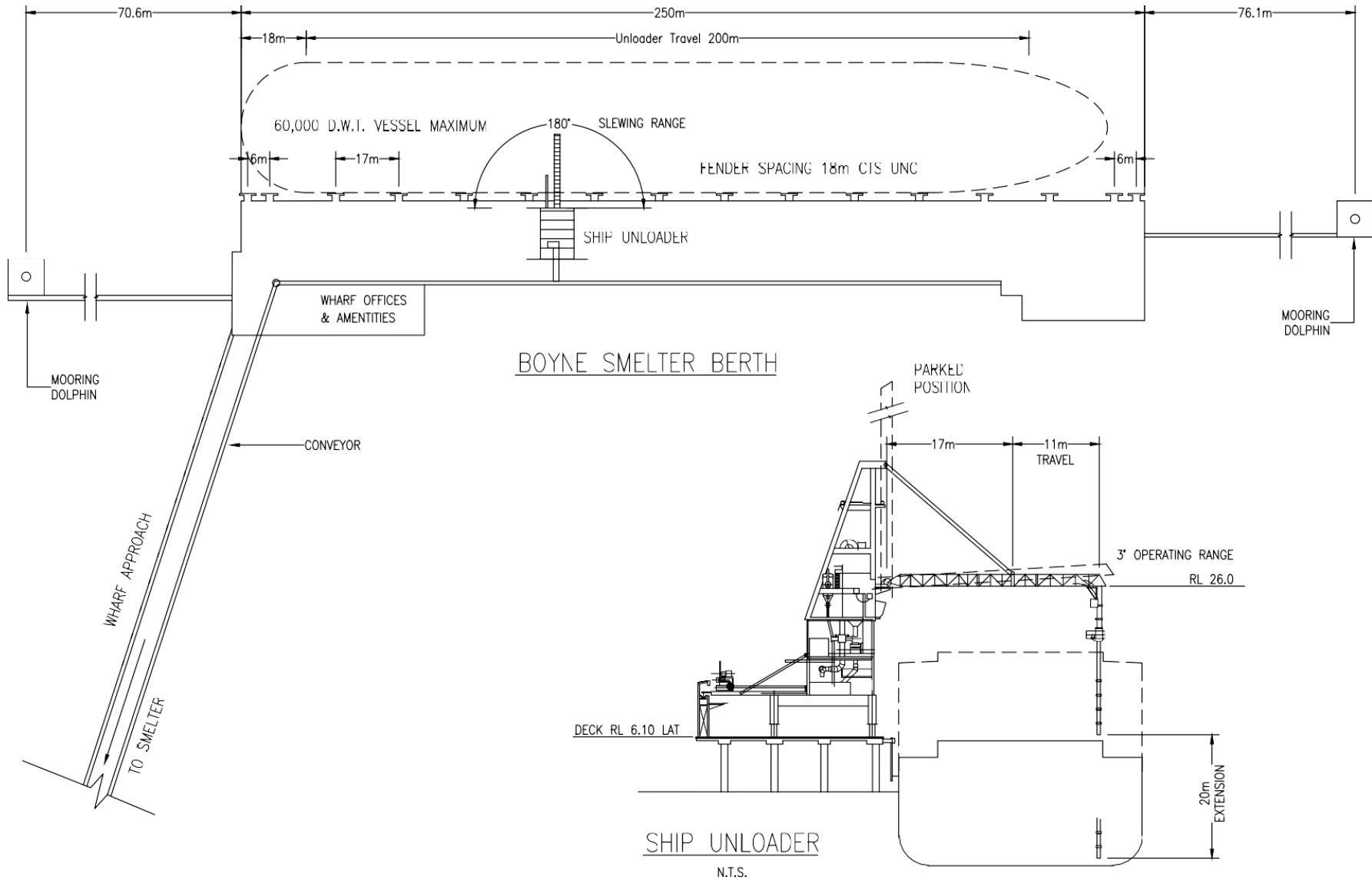
Facsimile – 4972 0455

Web – <http://www.mts.org.au>

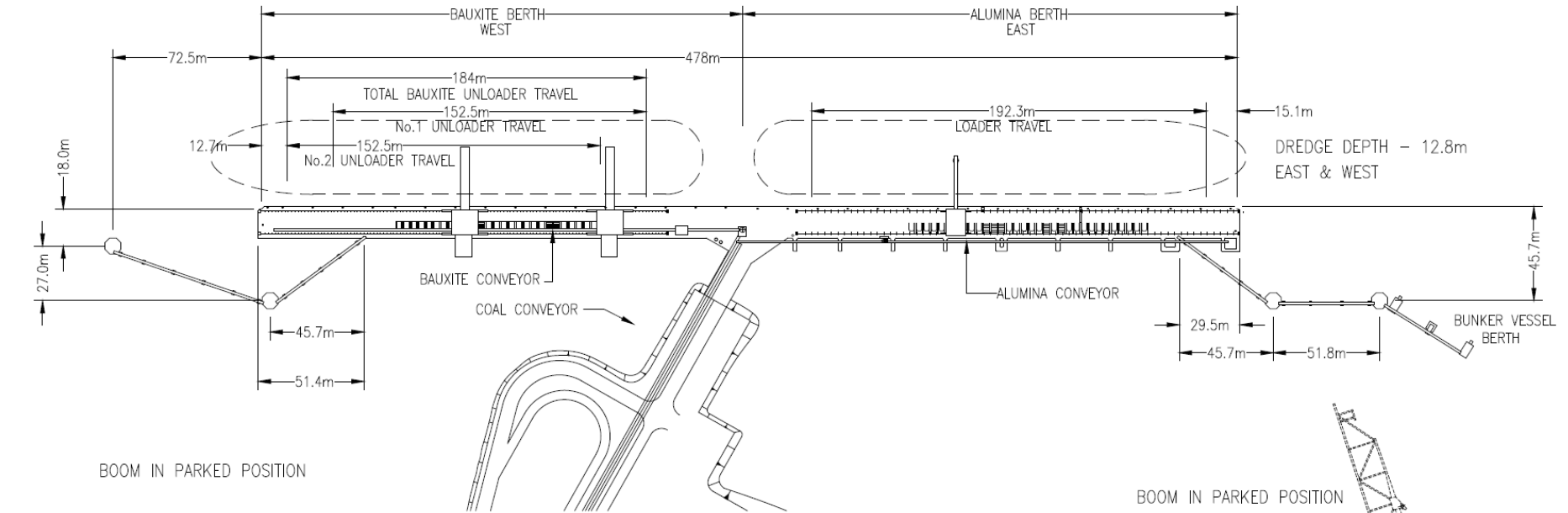
Email – gladstone@mts.org.au

Wharf Centre Drawings

Boyne Wharf

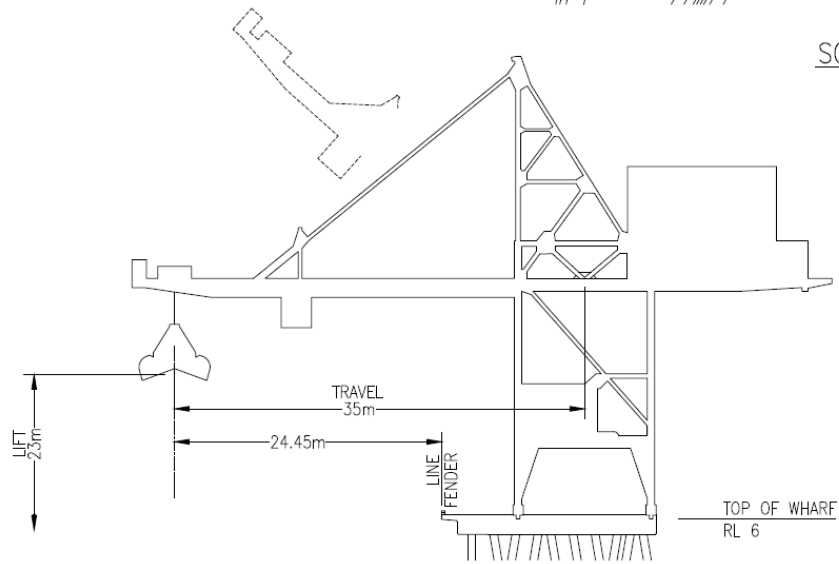


South Trees East and West



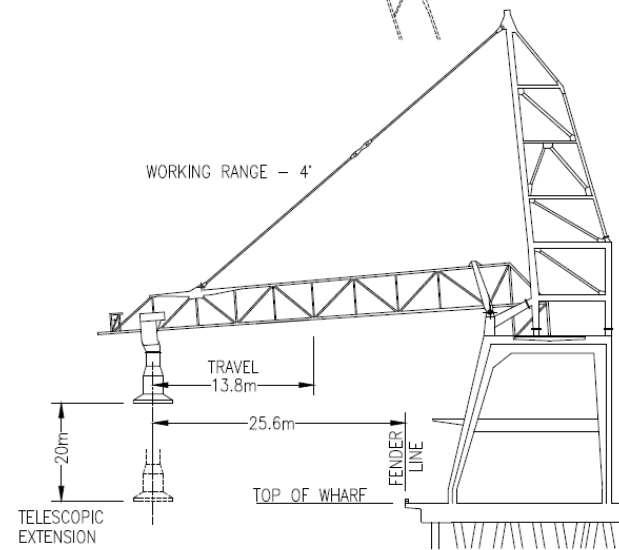
SOUTH TREES QAL BERTH

1:2000



BAUXITE UNLOADER (WEST) - 1650 TPH

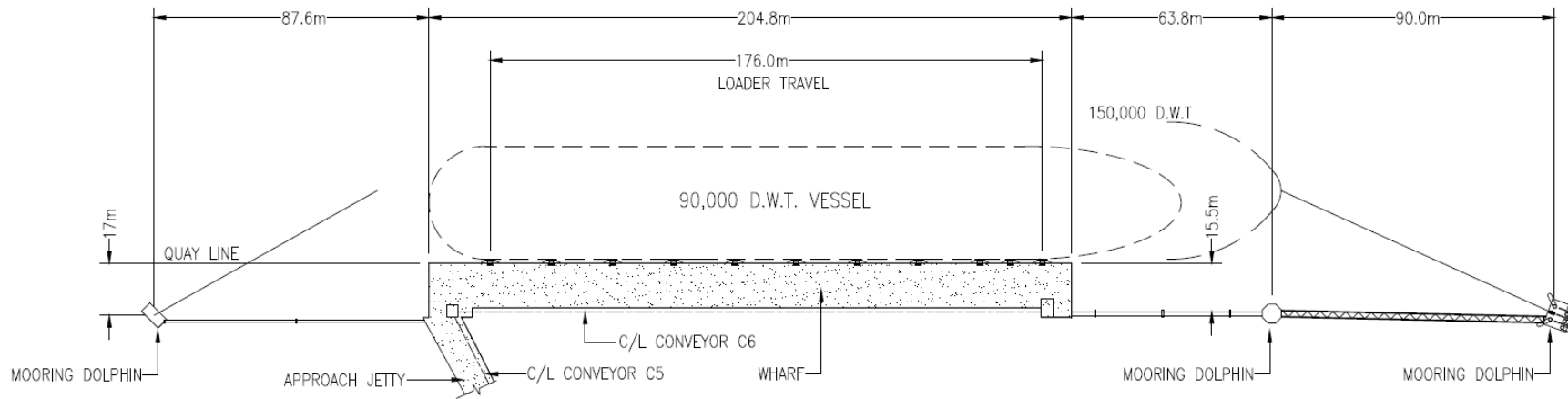
2 OFF - N.T.S.



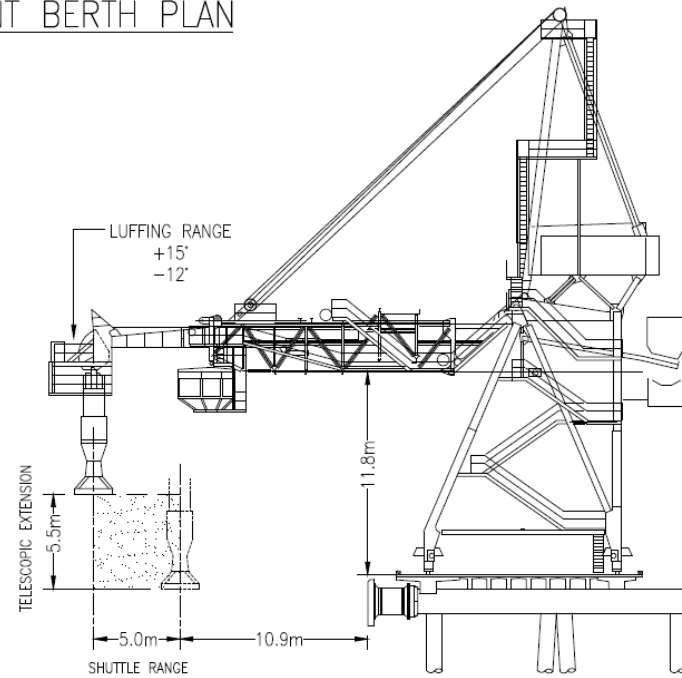
ALUMINA LOADER (EAST) - 1500 TPH

N.T.S.

Barney Point



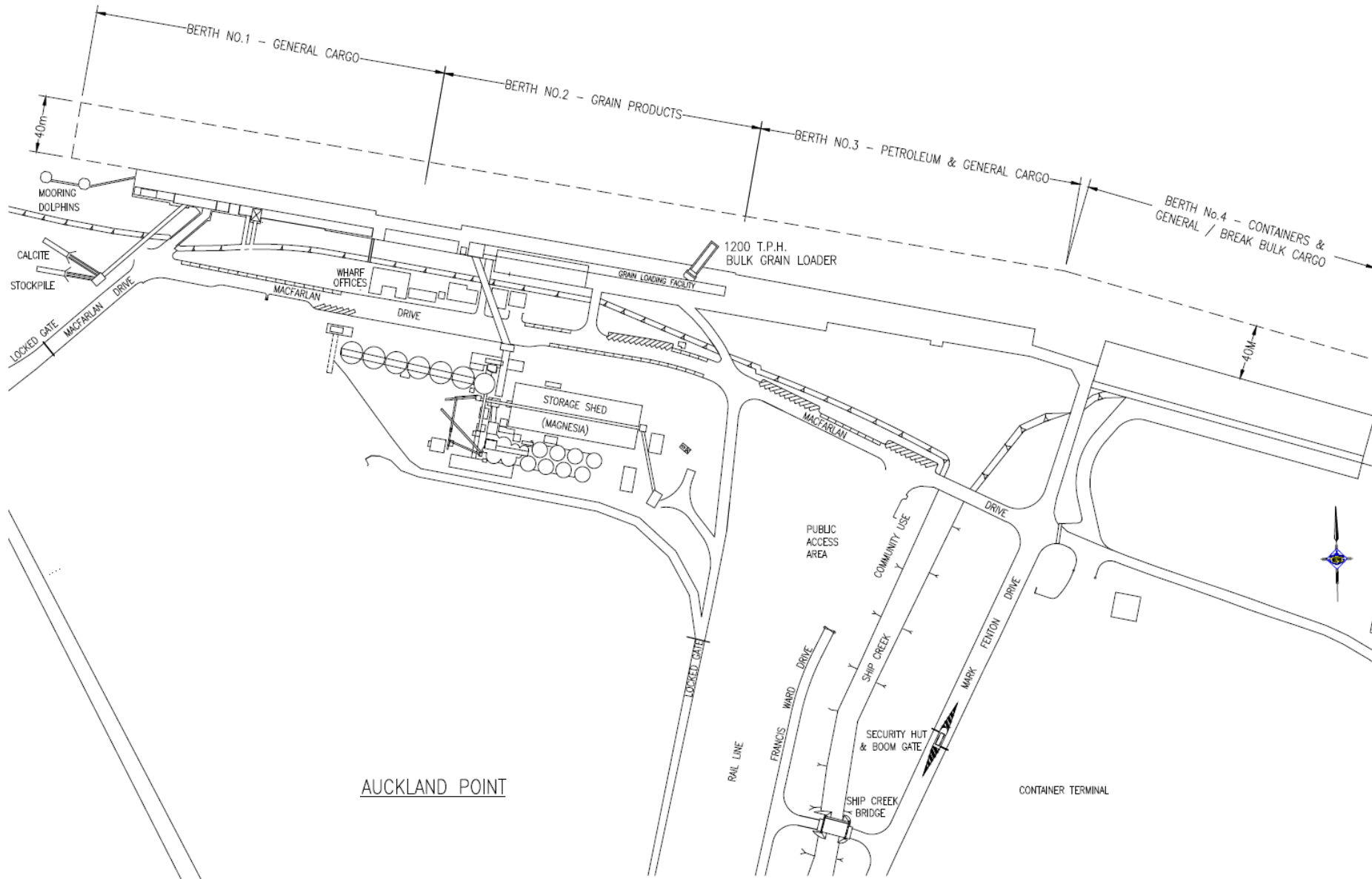
BARNEY POINT BERTH PLAN



SHIPLOADER ELEVATION

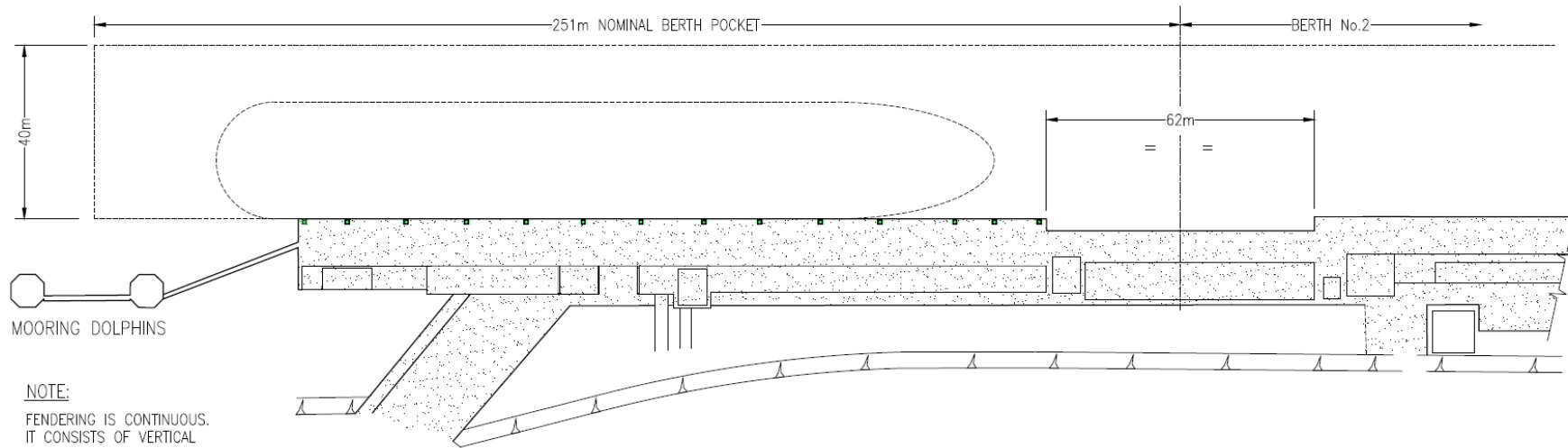
NTS

Auckalnd Point 1-4



AUCKLAND POINT

Auckland Point 1



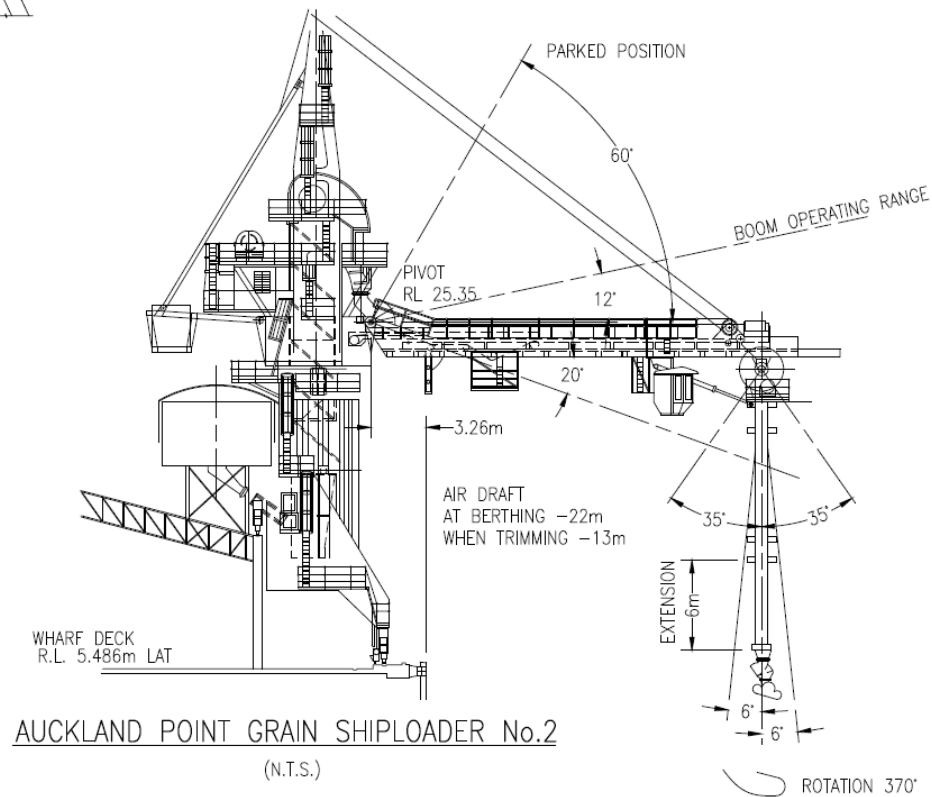
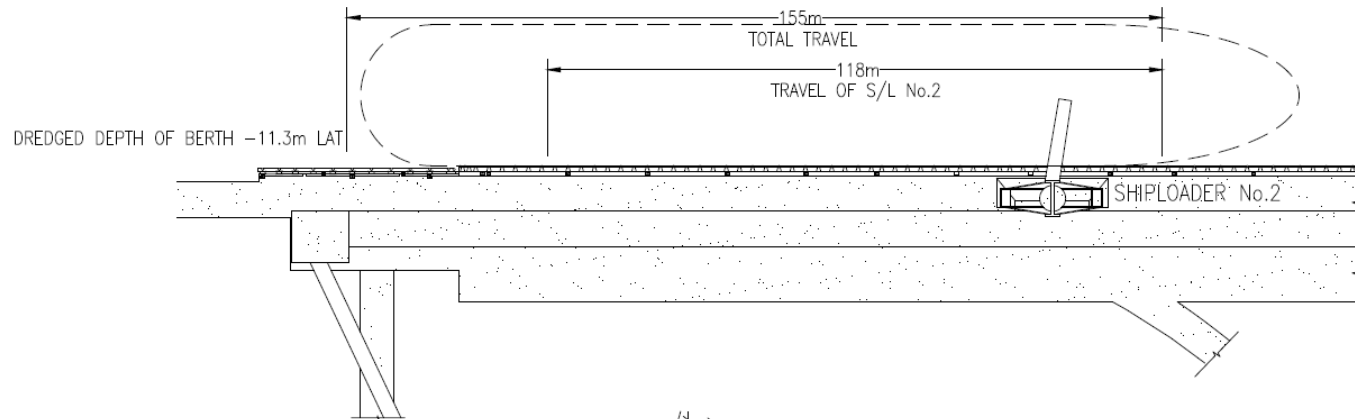
MOORING DOLPHINS

NOTE:

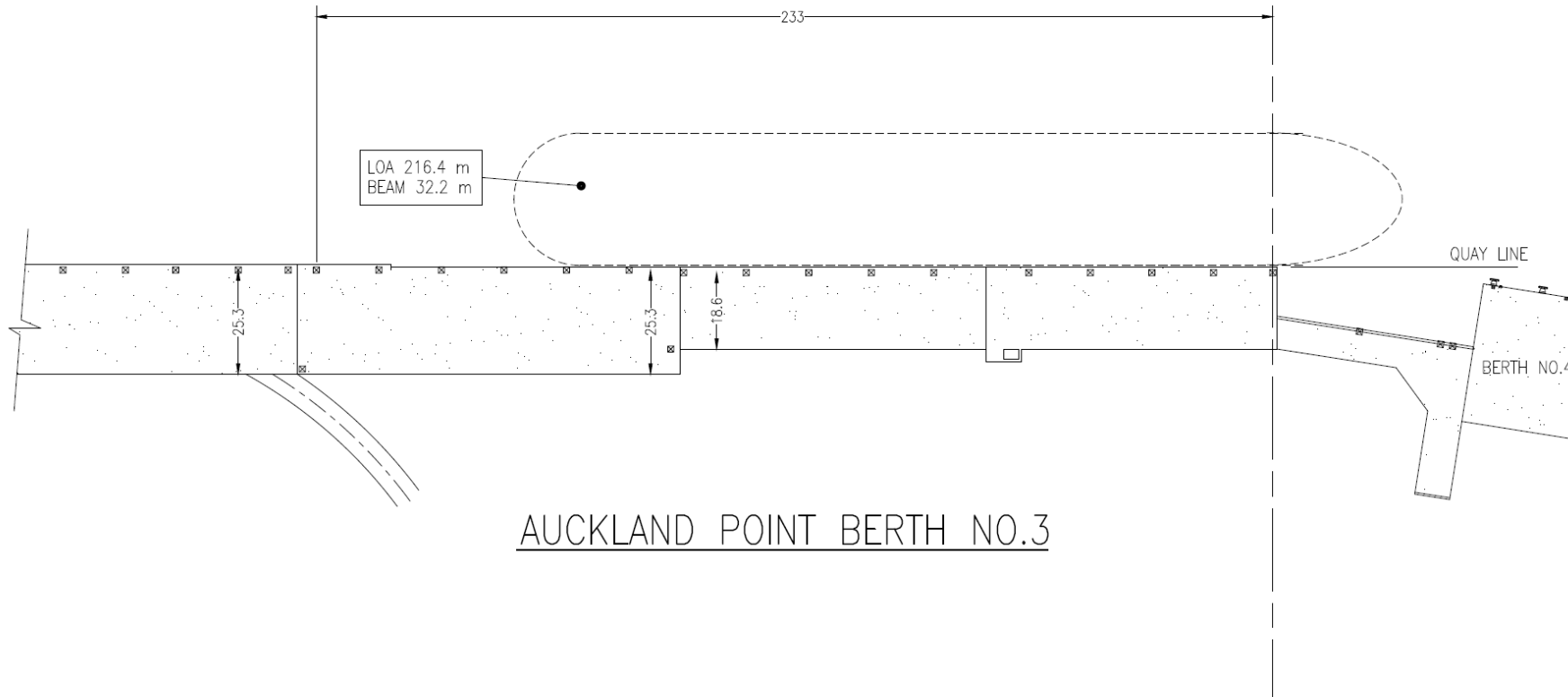
FENDERING IS CONTINUOUS.
IT CONSISTS OF VERTICAL
TIMBER PILES SUPPORTING
A TIMBER WALING BEARING
AGAINST RUBBER FENDERS.

AUCKLAND POINT BERTH NO.1

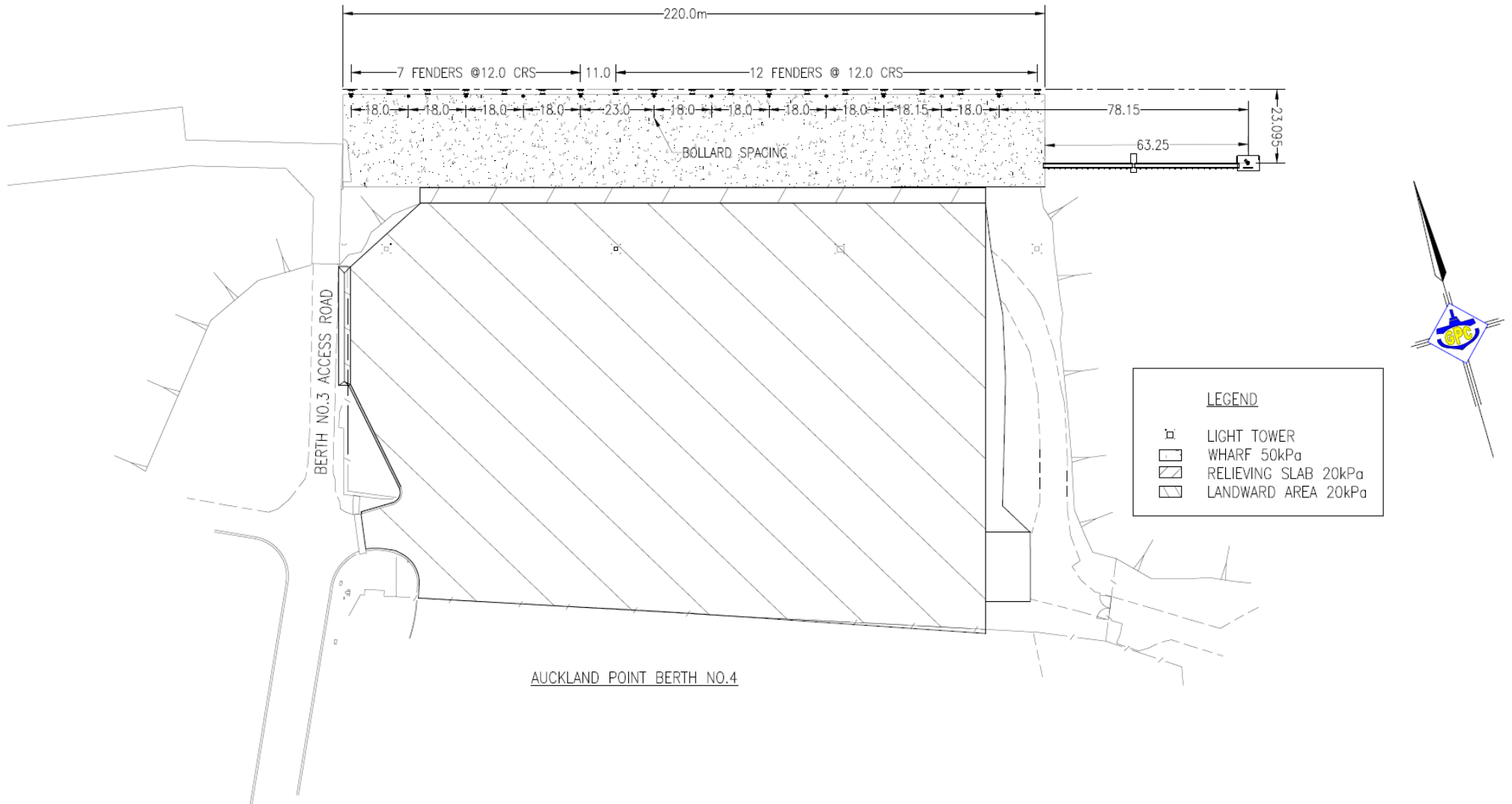
Auckland Point 2



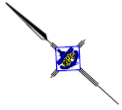
Auckland Point 3



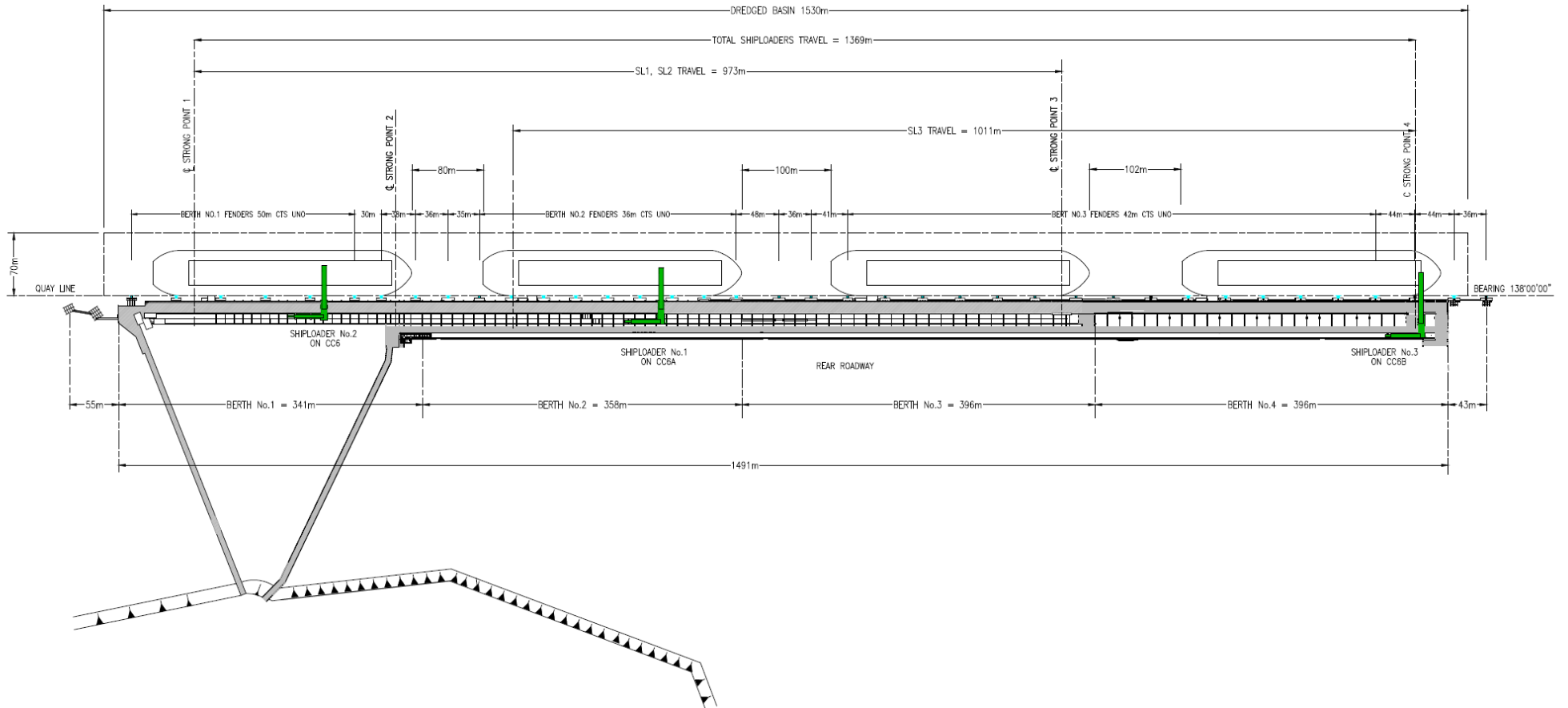
Auckland Point 4



AUCKLAND POINT BERTH NO.4



CLINTON COAL WHARF

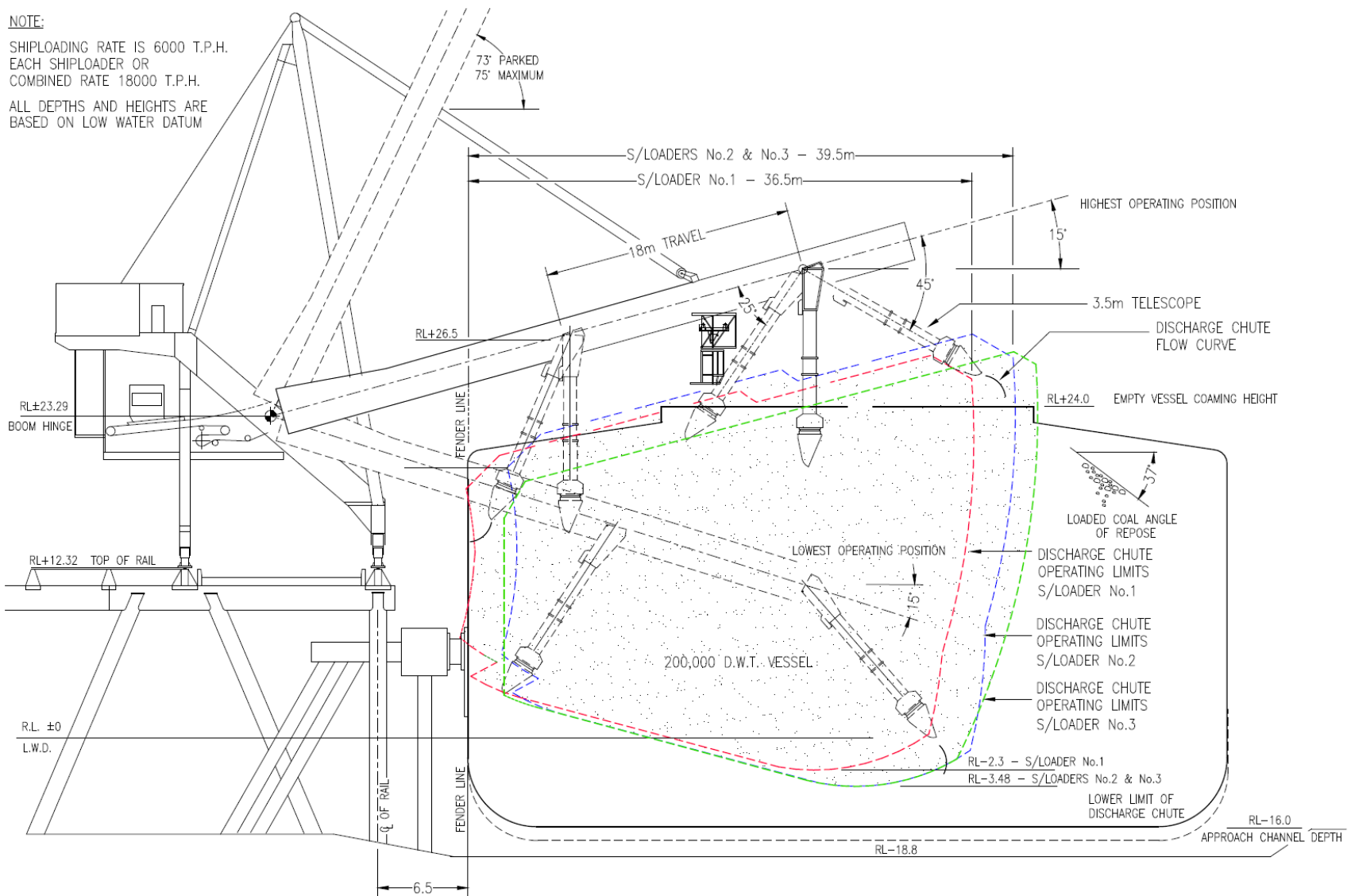


RGCT 1, 2, 3, 4

NOTE: S/LOADERS No.2 & No.3 BOOM IS SHOWN
(S/LOADER No.1 BOOM IS 3M SHORTER)

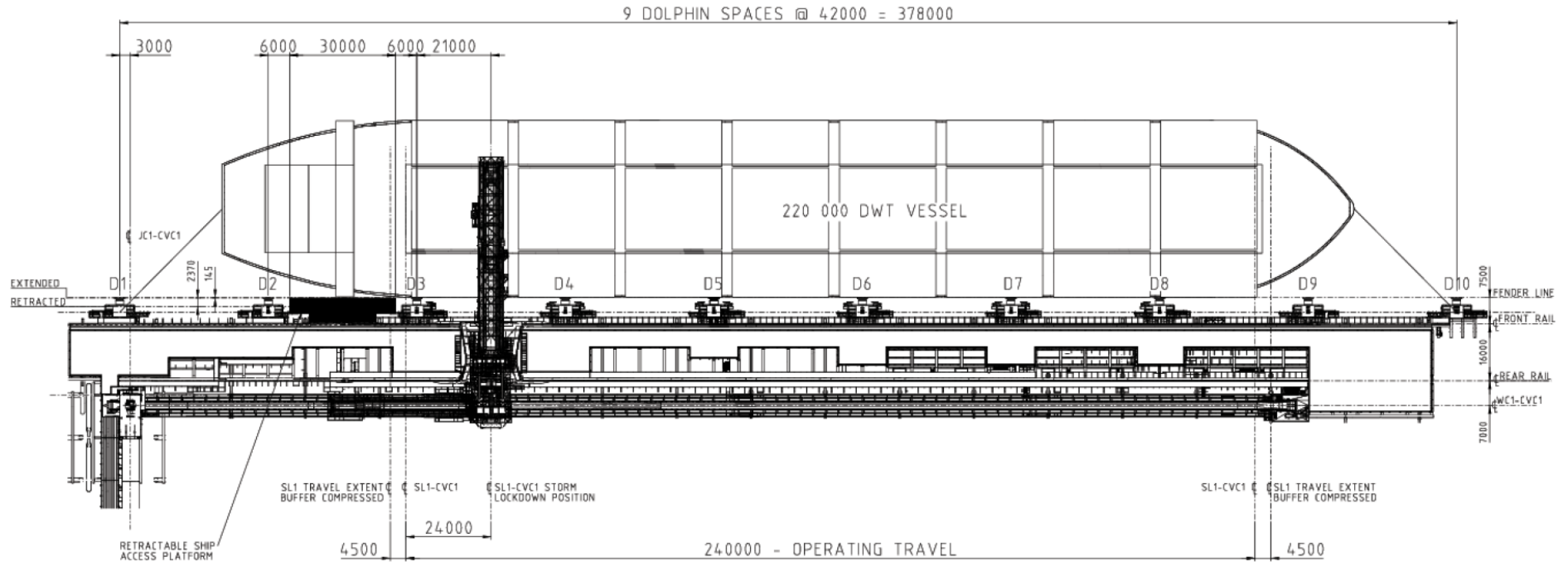
NOTE:

SHIPLOADING RATE IS 6000 T.P.H.
EACH SHIPLOADER OR
COMBINED RATE 18000 T.P.H.
ALL DEPTHS AND HEIGHTS ARE
BASED ON LOW WATER DATUM



REG TANNA COAL TERMINAL

Wiggins Island Coal Export Terminal

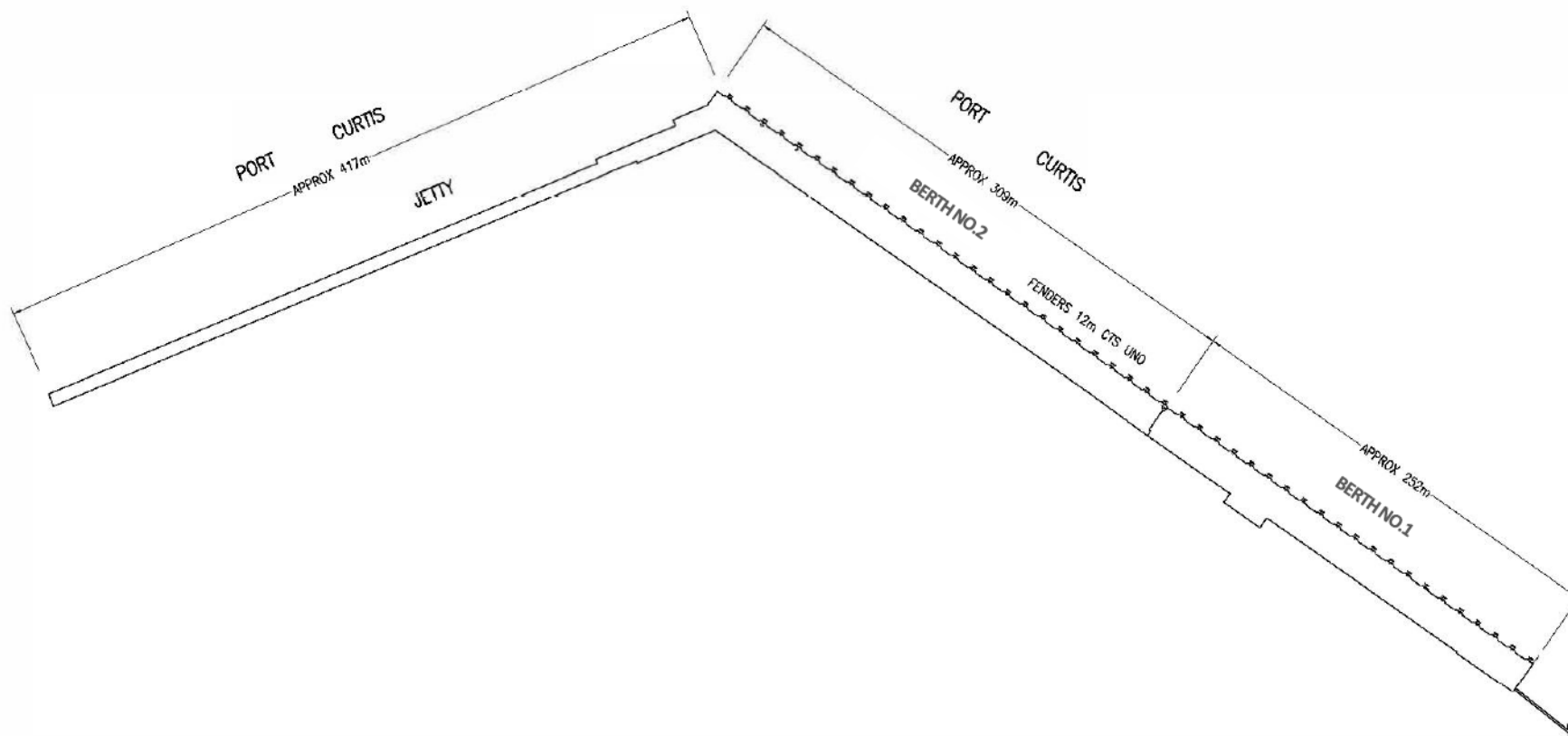


DOLPHIN	QUICK RELEASE MOORING HOOKS
D1	4 x 100T
D2	2 x 100T
D3	2 x 60T
D4	2 x 60T
D5	2 x 60T
D6	2 x 60T
D7	2 x 60T
D8	2 x 60T
D9	2 x 100T
D10	4 x 100T

BERTH 1

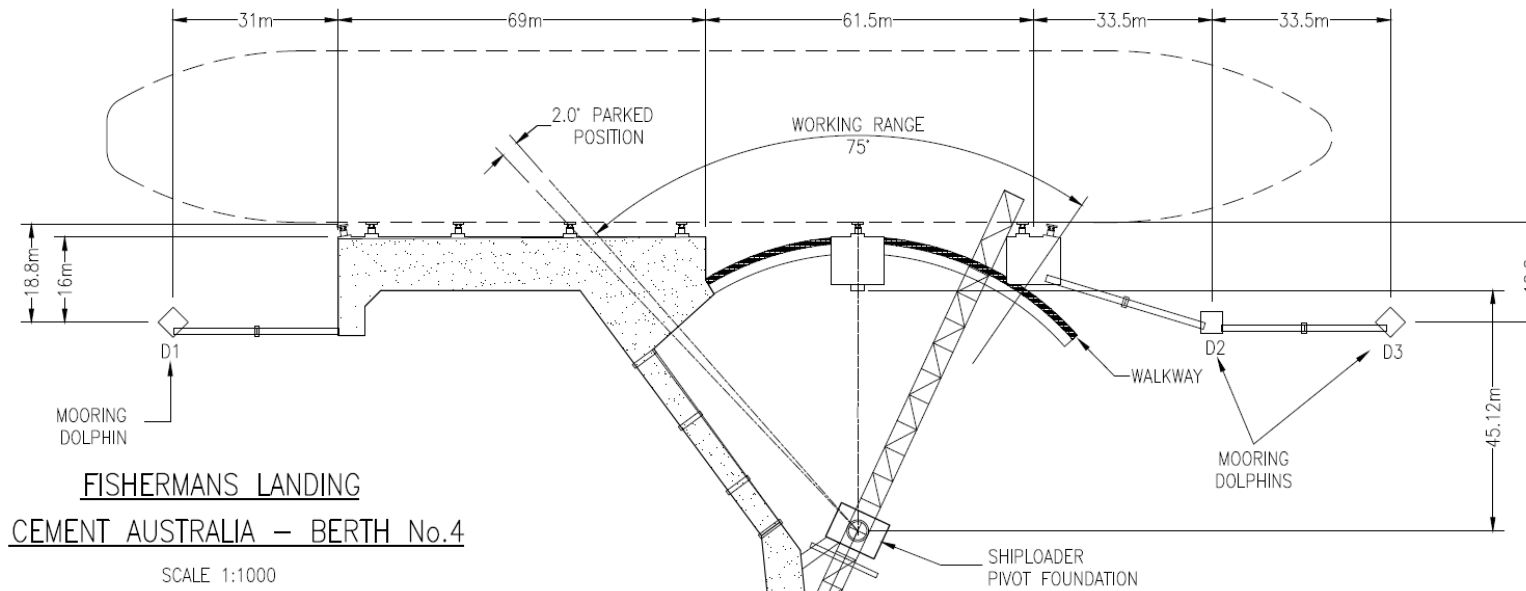
FOR INFORMATION

Fishermans Landing No 1 and No 2

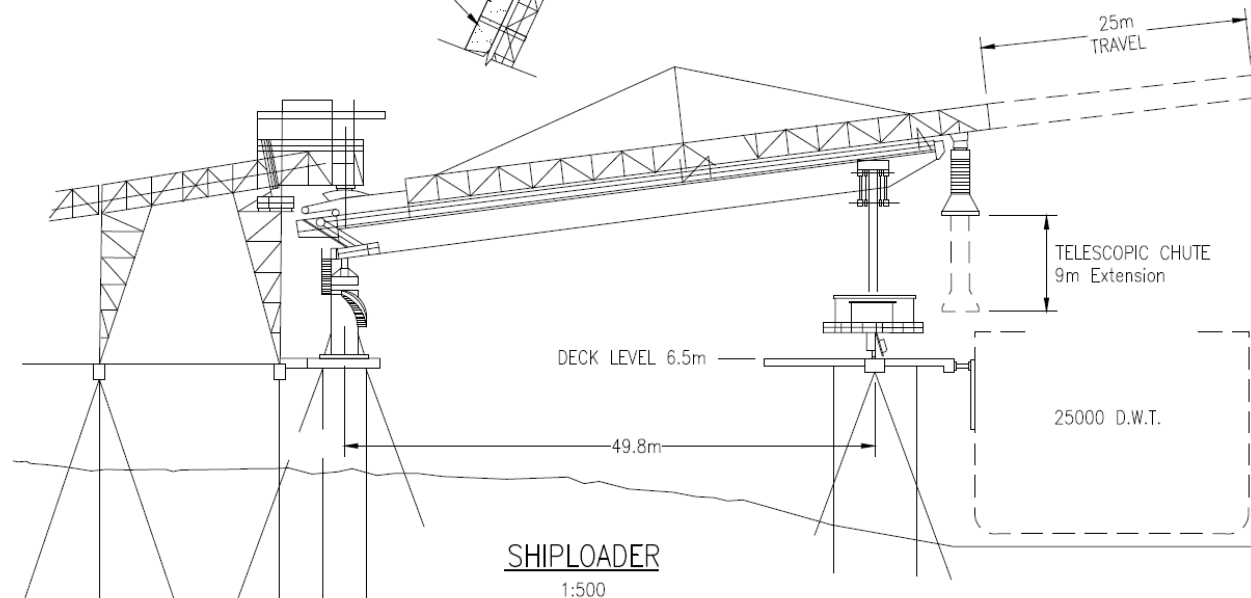


FISHERMAN'S LANDING BERTH NO.1 & 2

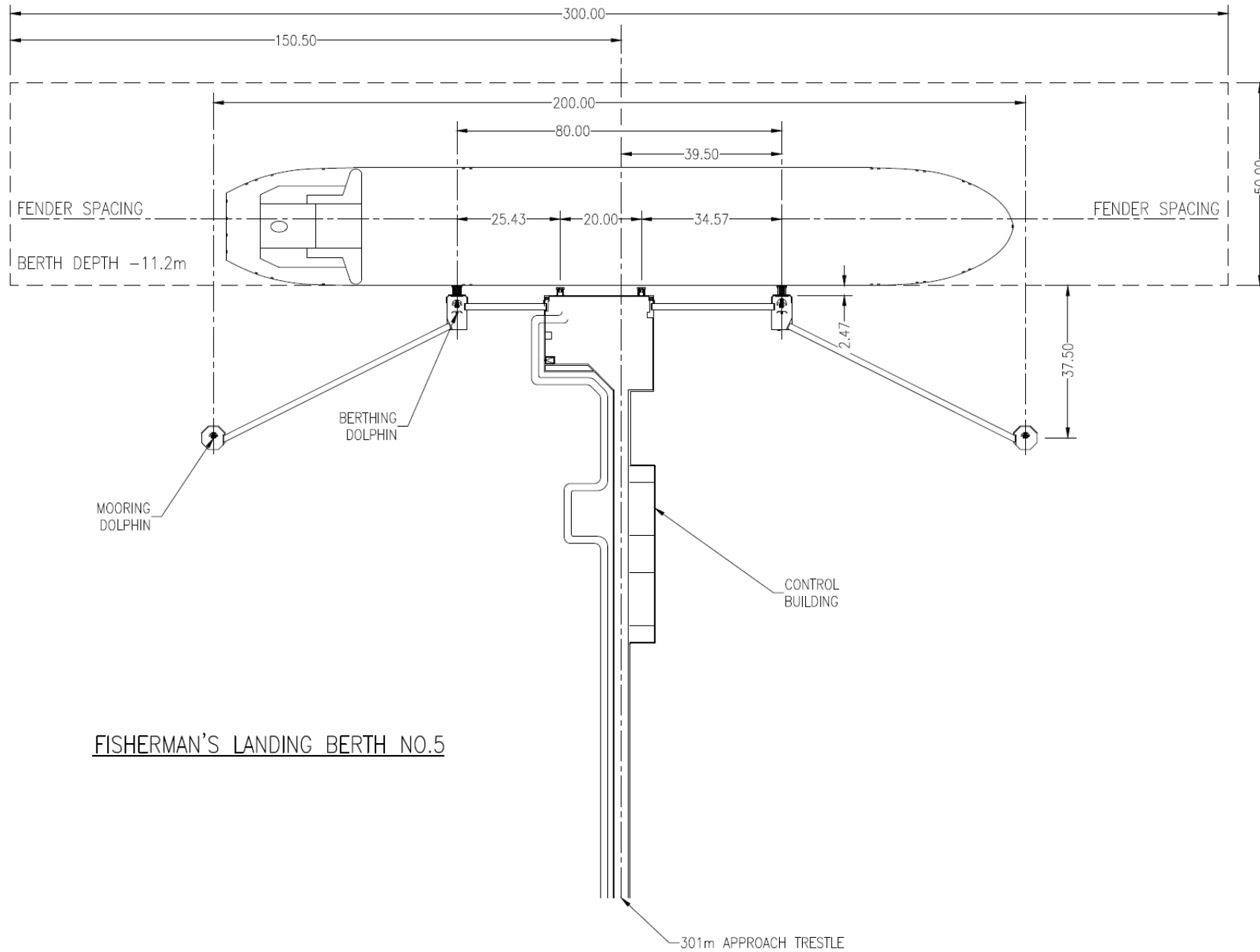
Fishermans Landing No 4

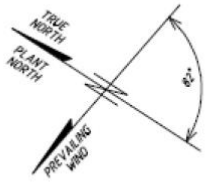


APPROACH JETTY
285m



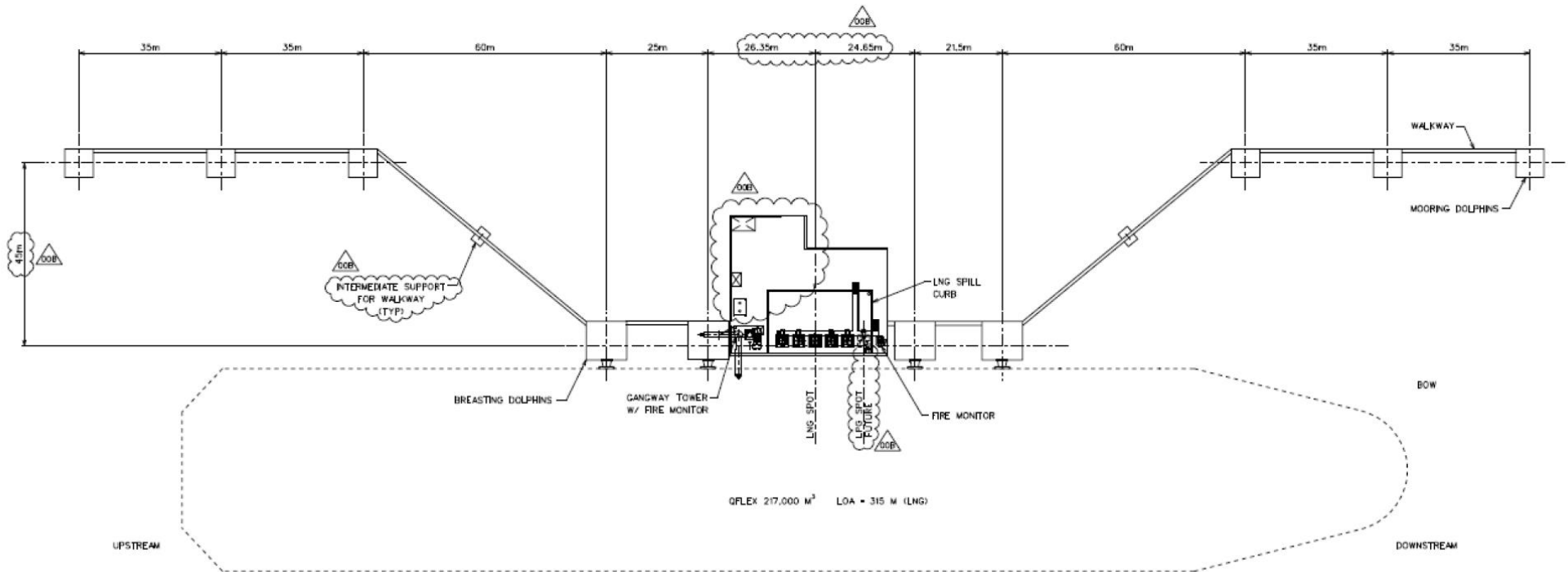
Fishermans Landing 5





NOTES:

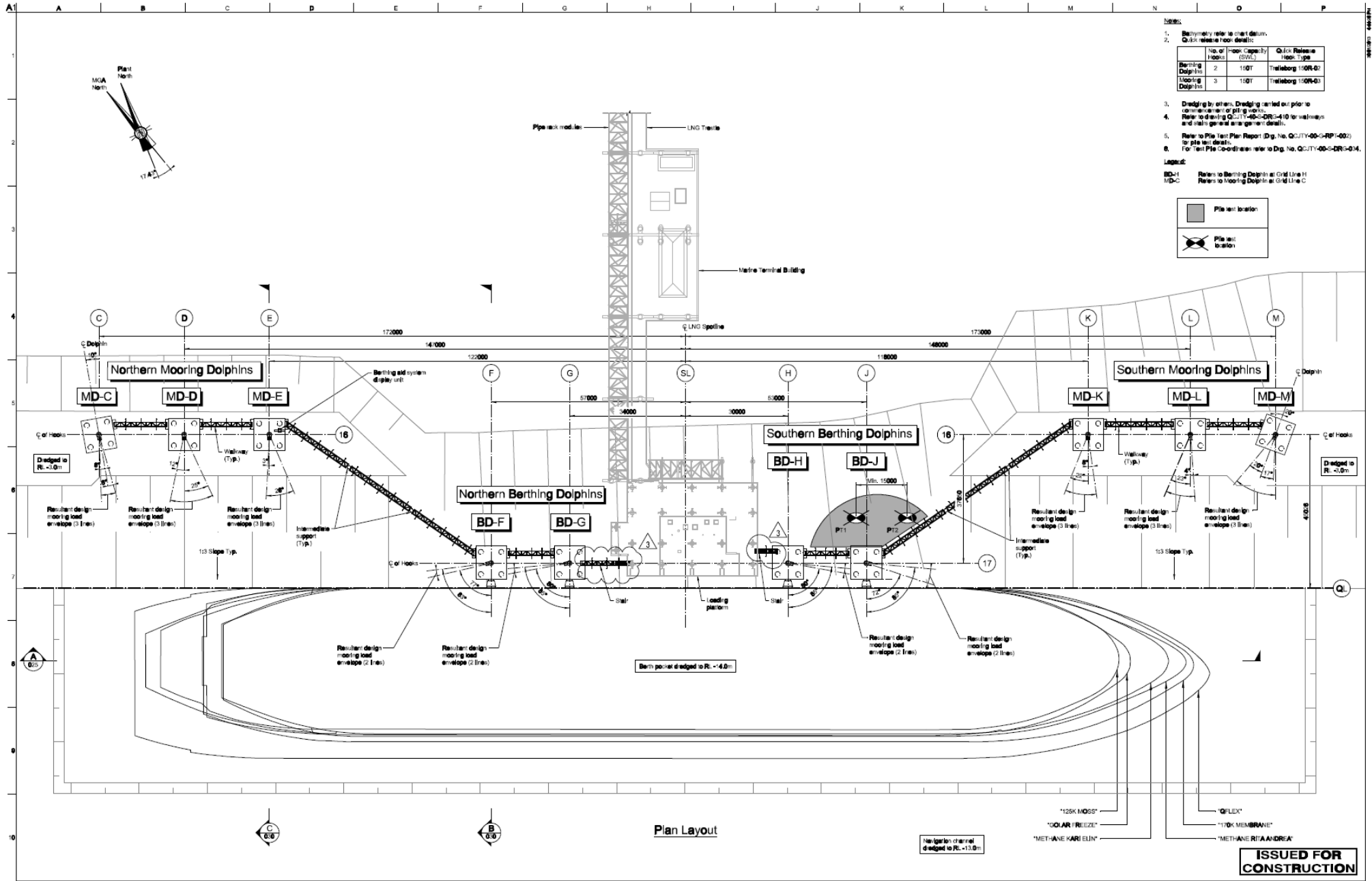
1. ALL COORDINATES REFER TO MGA GRID ZONE 56 (DATUM GDA94).
2. ALL DIMENSIONS ARE IN METERS.
3. EQUIPMENT LOCATIONS, STRUCTURE CONFIGURATIONS & DIMENSIONS DEPICTED ARE CONCEPTUAL & APPROXIMATE. DESIGN WILL BE FINALIZED IN EPC.



BERTHING ARRANGEMENT

SCALE: 1:500





GLNG

Please contact GLNG for current wharf configuration



Gladstone Ports Corporation

Growth, prosperity, community.

**Gladstone Ports
Corporation Limited**

40 Goonoon St / PO Box 259
Gladstone, QLD, 4680, Australia

Tel +61 7 4976 1333
Fax +61 7 4972 3045
www.gpcl.com.au

ACN 131 965 896
ABN 96 263 788 242