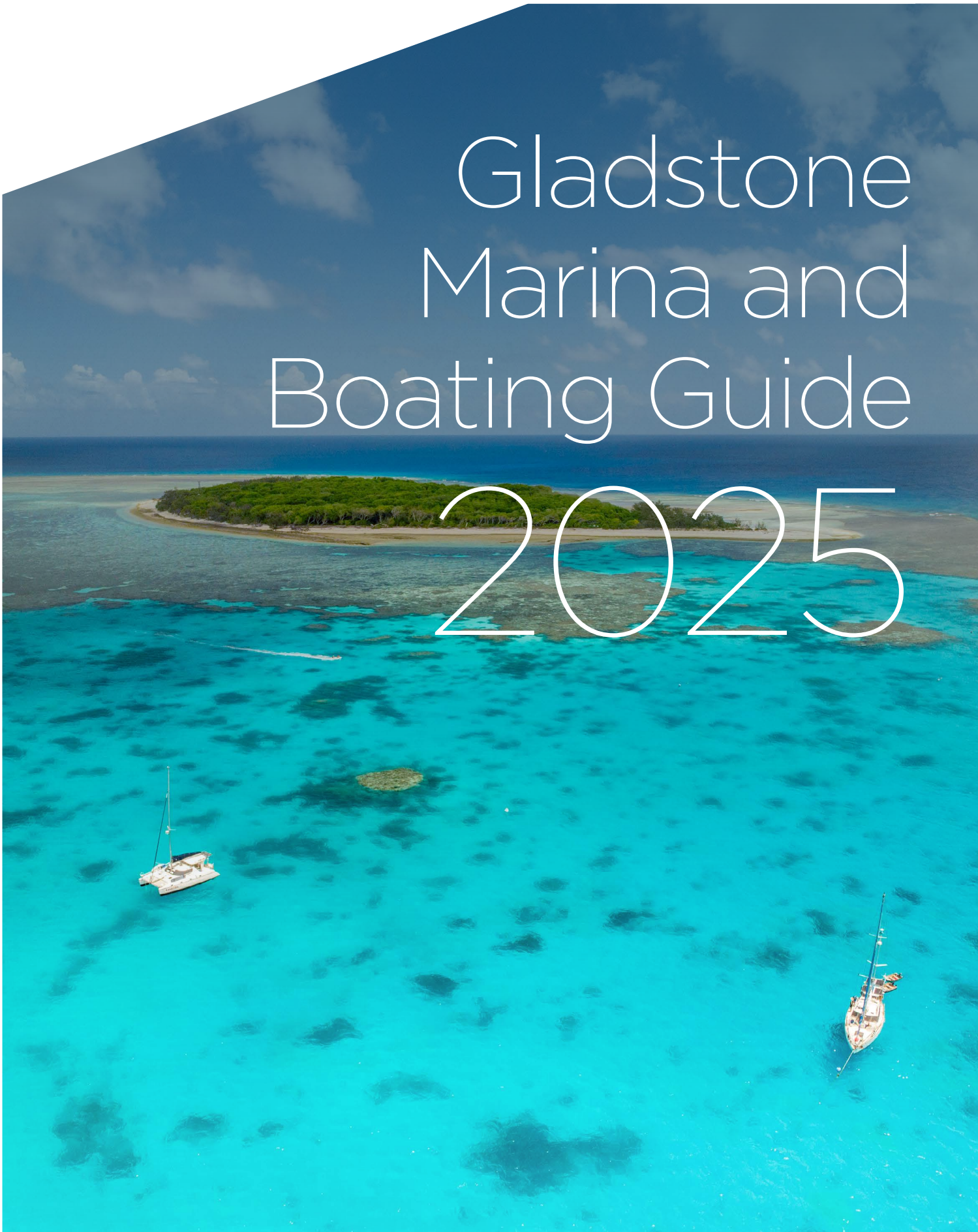


Gladstone Marina and Boating Guide

2025





Contents

Welcome to Gladstone Marina	2	Your Passport to the Reef	22
Gladstone Marina Facilities	4	Capricorn Bunker Group.	26
Marina Berths	6	Distance Chart	27
Gladstone Port Procedures and Shipping Information.	8	Fishing Adventures	28
Ship Navigation Chart Gladstone	10	Explore	30
Transit Guide	12	Environment Guide	34
The Narrows Map.	17	Emergency Information	36
Inshore Anchorages	18	Bureau of Meteorology Tide Tables . . .	40
		Key Contacts	IBC

Refresh. Relax. Explore.

GPC acknowledges the First Nation peoples Bailai, Gurang, Gooreng, Gooreng, Taribelang Bunda, Darumbal, Kabi Kabi and Butchulla whose original land we all share, live, work and play on. GPC acknowledge and pay our respect to all Elders of past, who have made the many sacrifices, contributions and paved the way for us all to be here today.

GPC acknowledges our present and emerging Leaders who will continue the fight for a better and united Australia for all our generations of today, tomorrow and in the future.

GPC also extends this respect to other Aboriginal, Torres Strait Islander and Australian South Sea Islander Elders and peoples within our operating footprint.

gladstonemarina.com.au

marina@gpcl.com.au | 07 4976 1399

Gladstone Marina Office
(second blue building, waterside, after the Marina Bridge)
98 Bryan Jordan Drive | Gladstone QLD 4680

After hours security | 07 4976 1213

Proudly operated by

**Gladstone Ports
Corporation**

Cover and back cover images courtesy of Tourism and Events Queensland

Gladstone 
marina

Welcome to Gladstone Marina

Welcome to Gladstone Marina, a 5 Gold Anchor Marina proudly operated by Gladstone Ports Corporation.



Located on the Southern Great Barrier Reef, we are perfectly positioned to help you refresh, relax and explore the secluded anchorages, tropical islands and pristine coral reefs in our area.

Our first priority is to help you refresh after your trip. You'll immediately unwind and relax with our welcoming team on deck, state-of-the-art facilities on hand and easy access to local services.

From your first contact with us, our highly qualified team will help you every step of the way. Our in-depth experience, coupled with our

exceptional customer service, will ensure your stay is one to remember.

When you're ready to explore, we'll help you plan your ideal water or land adventure too!

The captivating coral cays nestled off our coast are a must-see — stunning Heron Island and majestic Lady Musgrave are both within the beautiful Bunker Group of islands. Offering incredible snorkelling, diving and fishing, you'll never want to leave the tropical paradise on our doorstep.

You're also invited to discover our region's hidden secrets — our award-winning parklands, vibrant national parks, freshwater lakes and the spectacular Boyne Valley.

There's a number of wonderful events as well, such as the iconic Gladstone Ports Corporation Brisbane to Gladstone Yacht Race. Held annually at Easter time, it finishes under the backdrop of the

Marina and our fabulous parklands — making Easter a real celebration and not to be missed.

We look forward to welcoming you to Gladstone Marina and our wonderful region. Remember, our team is here to help you refresh, relax and explore everything our beautiful area has to offer. Any request is most welcome.

Superintendent David Osmond and the Gladstone Marina team

At left: Our team members are all Coxswain or greater qualified skippers and mariners through and through. We stay up-to-date with the latest industry training via the Marina Industry Association, ensuring our Marina is operated to the highest safety standards and giving our valued customers peace of mind.



An aerial photograph of a tropical coastline. The water is a vibrant turquoise color, transitioning to a deeper blue further out. Several boats are visible on the water, including a motorboat in the lower left, a sailboat in the center, and another motorboat in the upper right. The shoreline is lined with lush green vegetation, including palm trees. In the background, there are sandy beaches and a small island. A light blue text box is overlaid on the right side of the image.

Perfectly
positioned
to help you
**refresh, relax
and explore**



Refresh

Gladstone Marina Facilities

Gladstone Marina is a five star first-class facility located in Central Queensland, and is proud to offer the following facilities to help you to refresh, relax and explore during your stay.

- **Toilets and showers** — separate bathroom and shower facilities with secure access for Marina patrons.
- **Marina BBQ facilities** - a new addition in 2022, patrons can make use of dedicated BBQ facilities. With extended seating options, it's the perfect space to socialise and relax.
- **Marina Lounge** — a new addition in 2021, the Marina Lounge provides an off-water space to relax in air-conditioned comfort and includes a kitchenette, desk, lounge area, reading material and games.
- **Laundry** — a secured laundry is available for our patrons.
- **Local restaurants onsite**
- **Hairdresser**
- **World-class parklands** — including great restaurants and coffee shops, public barbeques, picnic tables, kilometres of walking tracks, large playgrounds, a waterpark and public toilets.
- **Electronic security** — secure and private access to toilets, showers and laundry, with comprehensive CCTV and patrolling security guards throughout the Marina.
- **General rubbish and recycling** — available in the bin enclosure. To dispose of larger items, please contact the Marina office.
- **Sullage pump out facility**
- **Davit crane** — please contact the Marina office.
- **Oil and oil filter disposal** — please contact the Marina office.



**World-class
marina
amenities**
you'd expect
at your
finger tips



Scan the QR code
to learn more
about our modern
marina facilities

- **Battery disposal** — a designated battery tray is available in the bin enclosure area.
- **Power** — 15amp, 32amp, 63amp and 125amp power available at your berth.
- **Drinking water** — available at all berths.
- **Fish cleaning facilities** — located at the Volunteer Marine Rescue (VMR) ramp.
- **Wet berths, pile moorings, swing moorings and floating dry berths** — available for lease.
- **Fuel, ice and gas refills** — available onsite from Marina tenants.
- **Luxury courtesy bus** — Our top-of-the-range bus runs daily, allowing you to refresh and visit our local shops for provisions.

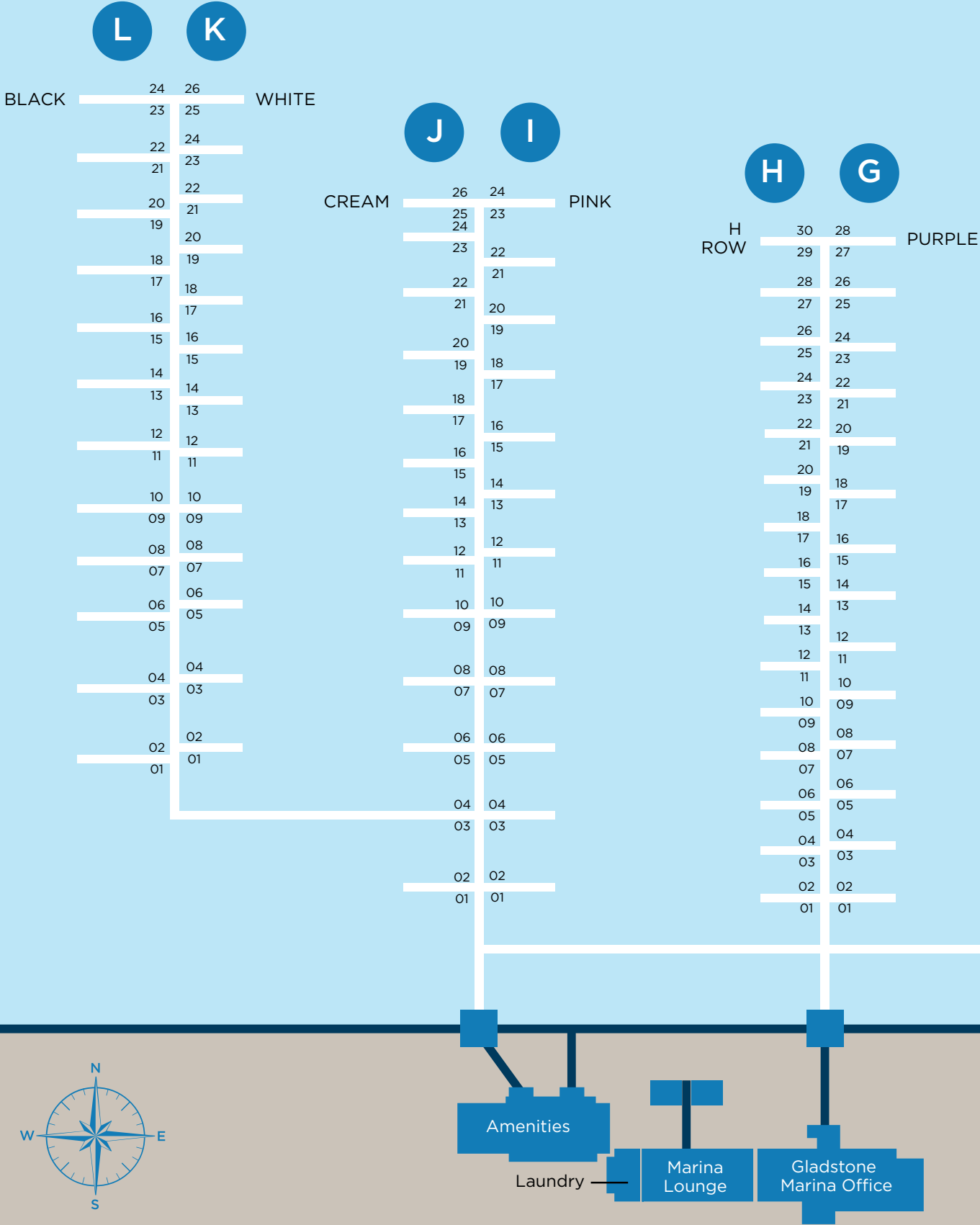


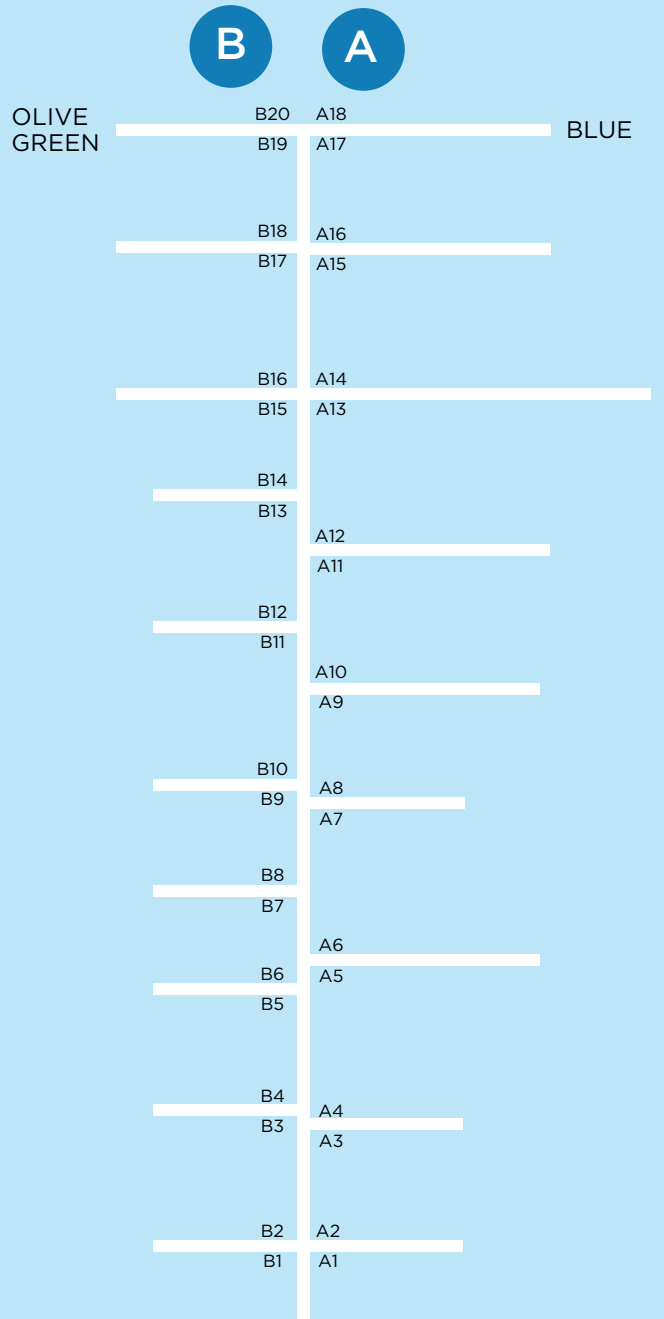
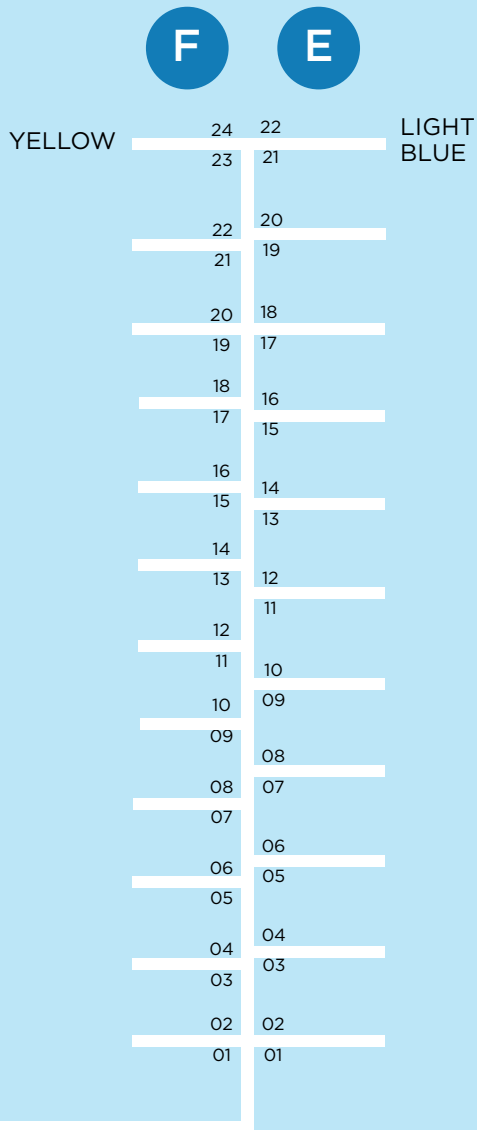
Scan the QR code to
learn more about our
Courtesy Bus
Schedule and Route



Photo credit: Malia Bartlett

Marina Berths





Numbers are on piles.

Each finger has a different colour on the Pile Cap tops.

A-Blue
 B-Olive Green
 E-Light Blue
 F-Yellow
 G-Purple

H-Numbers are on rows
 I-Pink
 J-Cream
 K-White
 L-Black

Gladstone Port Procedures and Shipping Information

When entering and exiting the Gladstone pilotage area, you are required to log in with the local Vessel Traffic Services (VTS).

You must maintain watch on Channel 13 and 16 when entering, leaving or moving within the area. This helps provide a safe passage for all users of the waterway. Please note, this ruling is for masters of vessels greater than 10 metres only, but we recommend all vessels make contact with VTS.

We suggest you use Maritime Safety Queensland's chartlet of ship navigation areas around Gladstone and follow the suggested small craft course — see pages 10 and 11.

Gladstone Harbour Master

Phone: 07 4971 5200 | **VHF:** Ch 13

Call Sign: Gladstone Vessel Traffic Service | Gladstone VTS

Volunteer Marine Rescue Gladstone

Phone: 07 4972 3333 | **VHF:** Ch 82

Call Sign: VMR Gladstone | Marine Rescue Gladstone

Maritime Safety Queensland — Gladstone office

Phone: 07 4971 5201

Emergency

Phone: 000

Radio Guide

- 1.** Vessel Traffic Services — login if over 10 metres, Channel 13. Monitor 13 and 16. It is recommended to log in if under 10 metres.
- 2.** Call Gladstone VTS with your vessel name.
- 3.** Wait for response.
- 4.** Report your intentions and intended transit path.
- 5.** Follow any instructions given.



Large ships with the bridge at the stern will have a large blind spot for several hundred metres in front of the bow. This blind spot extends much further forward if deck cargo or containers are carried.

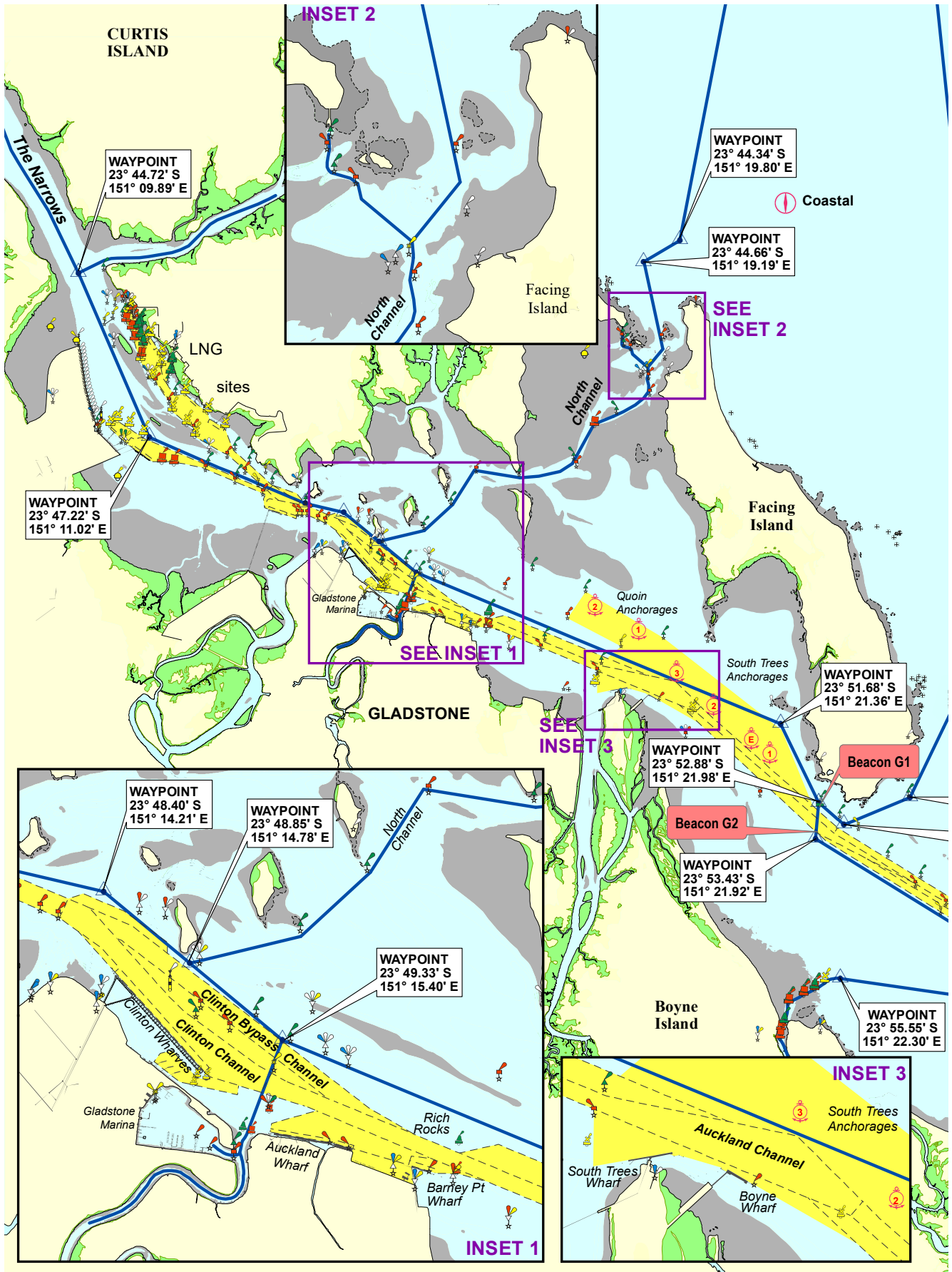
Ships can approach quickly and silently. At night, judgement of distance over water is more difficult. Ships do not have brakes and can take up to 2 nautical miles or longer to come to a complete stop.

Reference – Maritime Safety Queensland, 2022, Port Procedures and Information for Shipping, www.publications.qld.gov.au.



East Shores Parklands and Gladstone Harbour, Gladstone.

Ship Navigation Chart Gladstone



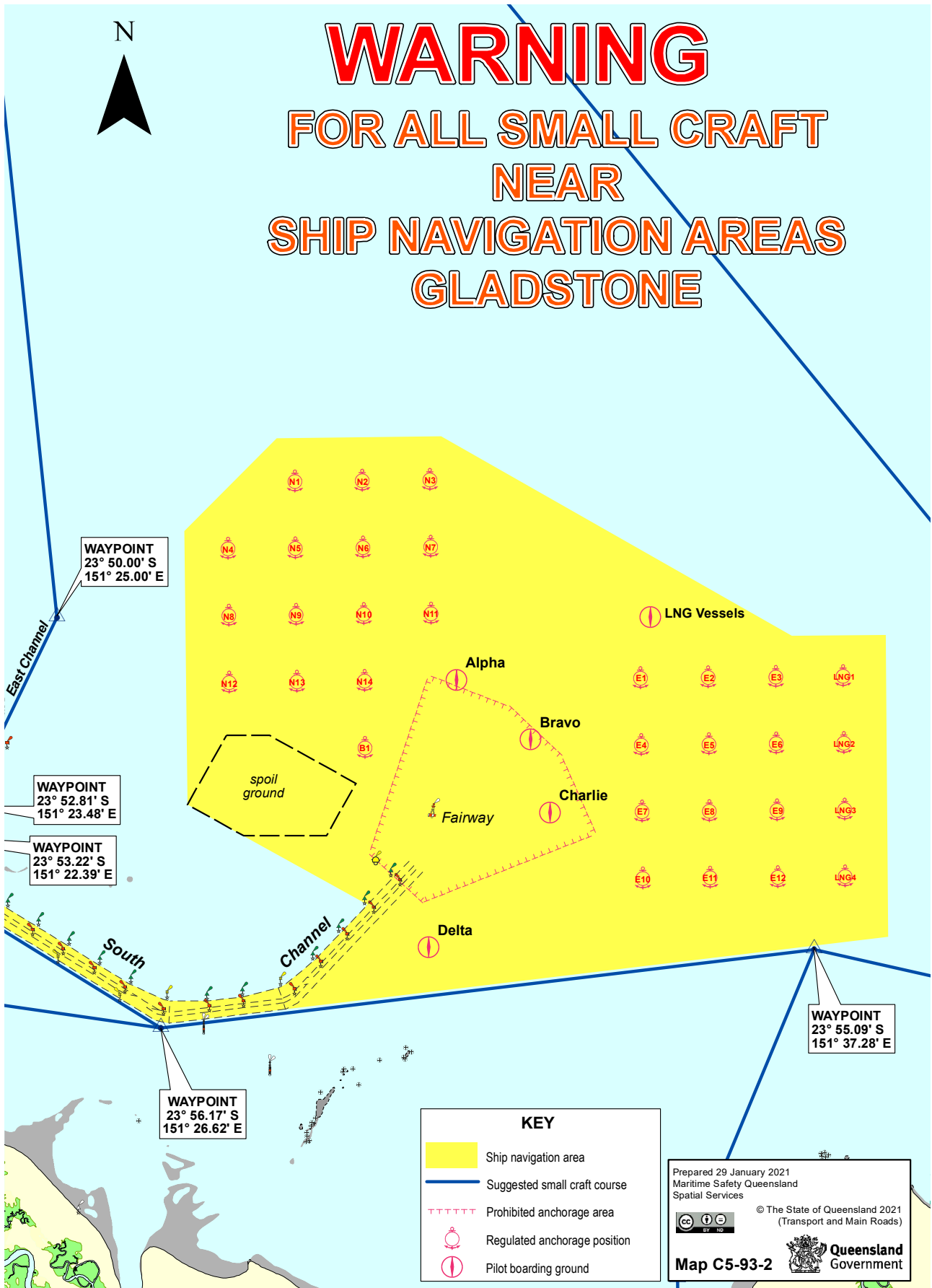
WARNING

FOR ALL SMALL CRAFT

NEAR

SHIP NAVIGATION AREAS

GLADSTONE



KEY	
	Ship navigation area
	Suggested small craft course
	Prohibited anchorage area
	Regulated anchorage position
	Pilot boarding ground

Prepared 29 January 2021
 Maritime Safety Queensland
 Spatial Services

© The State of Queensland 2021
 (Transport and Main Roads)

Map C5-93-2



Transit Guide

There are four main approaches into Gladstone Harbour and the Gladstone Marina.

South Channel
(Main Shipping Channel)

East Channel

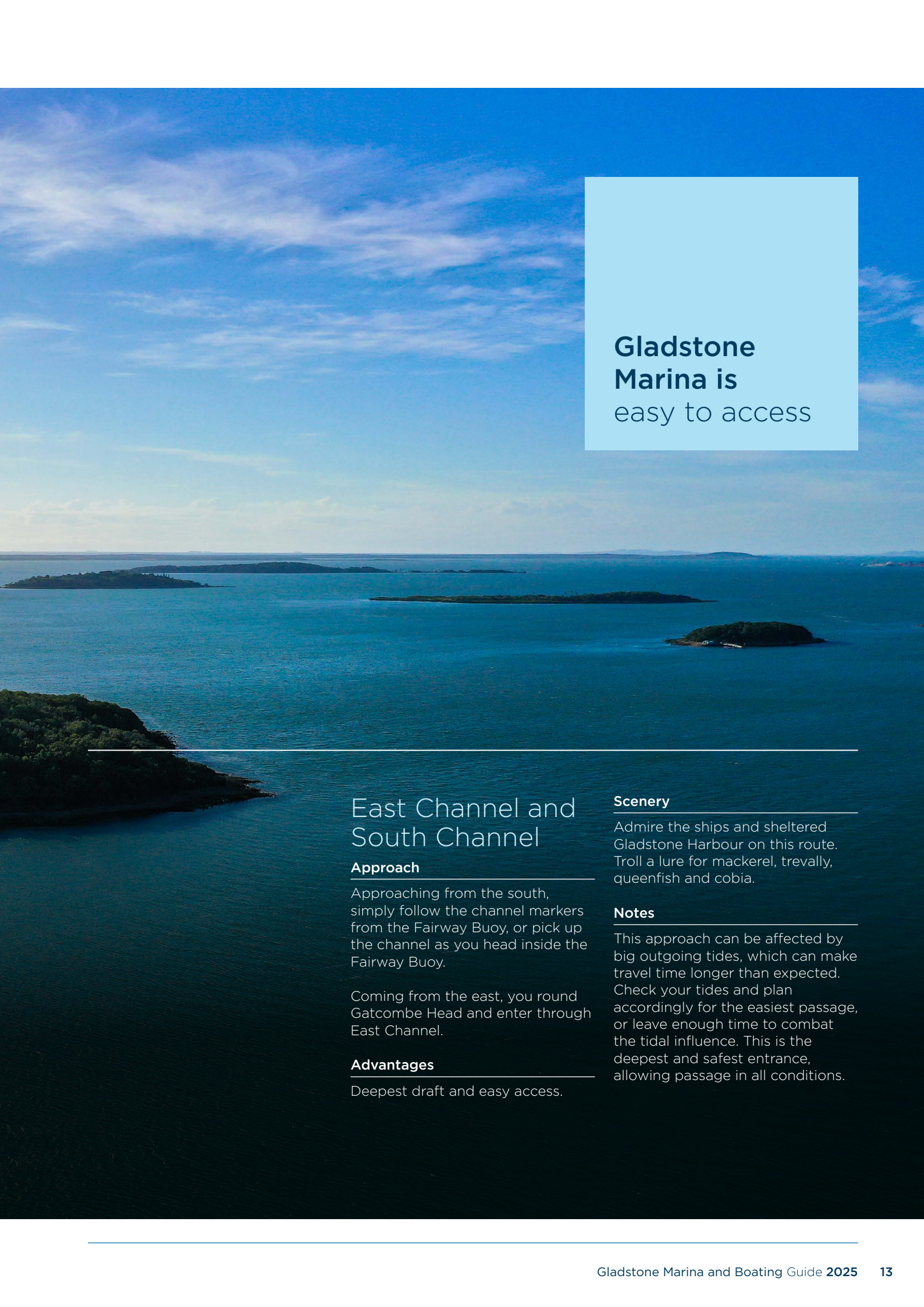
North Entrance

The Narrows

Each offer a unique and spectacular way to enter the Harbour.

There are a number of published cruising guides and websites, including Maritime Safety Queensland, which provide a detailed description of navigation in and around the Gladstone Harbour and surrounds. Remember to always consult your charts, tides and weather.

Gladstone Harbour



**Gladstone
Marina is**
easy to access

East Channel and South Channel

Approach

Approaching from the south, simply follow the channel markers from the Fairway Buoy, or pick up the channel as you head inside the Fairway Buoy.

Coming from the east, you round Gatcombe Head and enter through East Channel.

Advantages

Deepest draft and easy access.

Scenery

Admire the ships and sheltered Gladstone Harbour on this route. Troll a lure for mackerel, trevally, queenfish and cobia.

Notes

This approach can be affected by big outgoing tides, which can make travel time longer than expected. Check your tides and plan accordingly for the easiest passage, or leave enough time to combat the tidal influence. This is the deepest and safest entrance, allowing passage in all conditions.



Rat Island, North Entrance



North Entrance

Approach

From the north, you will approach between Facing Island and Curtis Island.

Consult your charts, strictly follow the lead markers, and ensure you know your draft and the tides.

Advantages

Quick entry and exit — less tide dependant than The Narrows.

Scenery

Cruise through tropical islands past the Southend community, the Oaks camping ground and many privately owned tropical island paradises. Keep your eye open for turtles and dolphins. There is a turtle rehabilitation centre on Quoin Island.

Notes

Ensure you know your draft and the tidal requirements for your vessel. Keep leads in line on the bow and stern. Outgoing tides and northerly winds can be rough. Troll a lure for mackerel, trevally, queenfish, cobia or even a marlin on the approach to the entrance and through the islands.



The Narrows

Approach

The Narrows is the stretch of water between Curtis Island and the mainland. It starts from Sea Hill Point in the north and extends to Grahams Creek in the south.

Please consult the Gladstone Marina team for local knowledge before travelling The Narrows section of water. Ensure you know your draft and the tidal requirements for your vessel, as The Narrows will dry out at low tide. However, many deep drafted vessels pass through on high tides. Gladstone Marina has all the relevant charts, and the team can talk you through the anchorages, tidal requirements and markers.

Advantages

This is the shortest way when travelling north from the Gladstone Marina or approaching from the north. The route is calm and sheltered, and it's 8NM shorter to go through The Narrows from Gladstone Marina to Roslyn Bay, Yeppoon.

Scenery

Beautiful, isolated flat-water cruising with unspoilt nature including dugongs, turtles and dolphins, as well as the rare snub-nosed dolphin. Extraordinary fishing and crabbing.

Notes

The Narrows is beacons as if Rockhampton was the major Port. It is suggested you should start transiting The Narrows (from Black Swan to Twin Islands) half an hour before Gladstone (Standard Port) high tide, so you will be transiting on a flooding tide.

For boats with a keel, high tide in Gladstone (Standard Port) should be equal to or greater than your draft plus 1.5m.

For example: for a Keel boat with a draft of 1.8m, the calculation is $1.8\text{m} + 1.5\text{m} = 3.3\text{m}$. Therefore, you need a high tide of at least 3.3m.

Take some midge repellent, as the area can be thick with them at times.

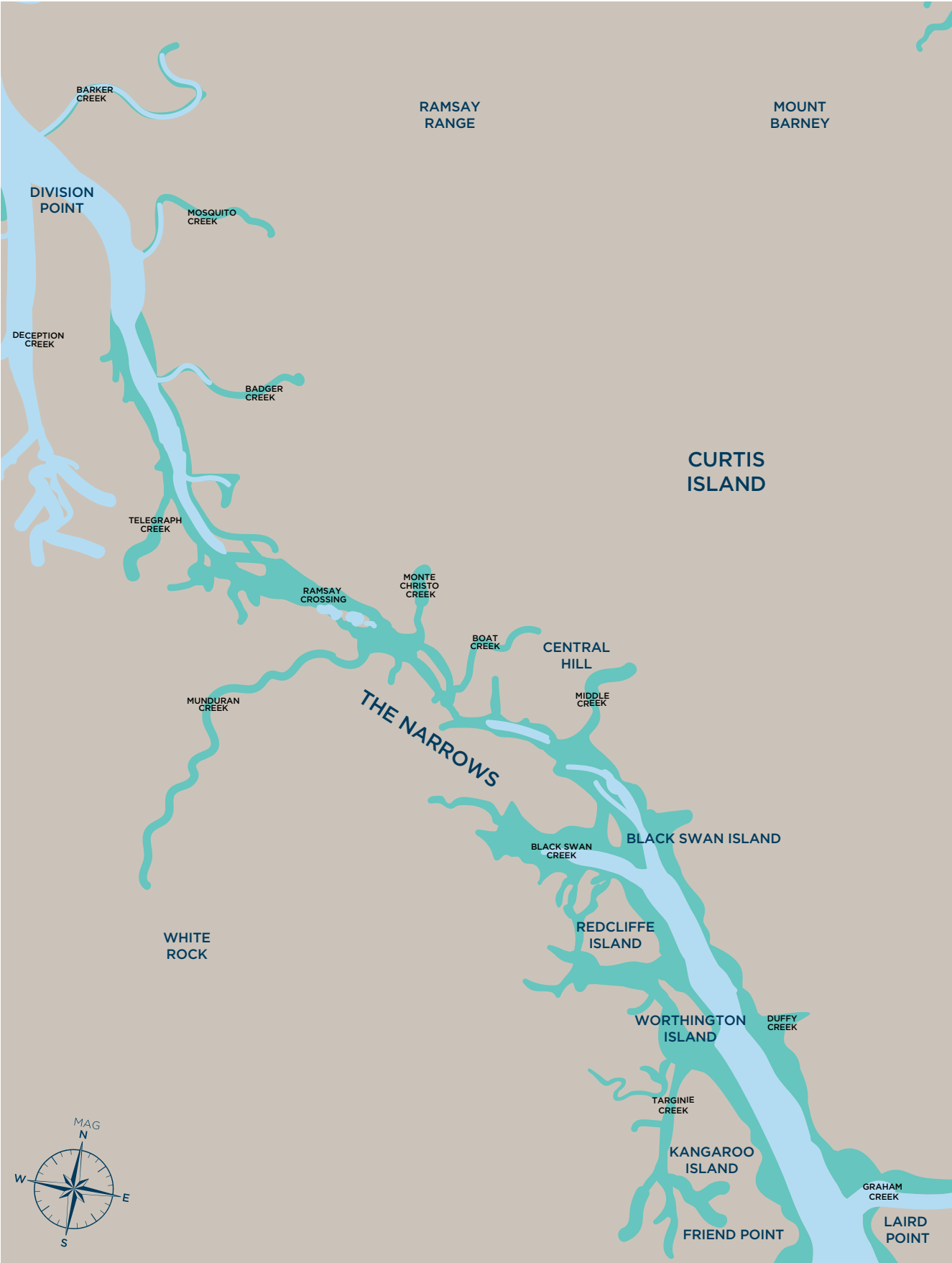
Suggested Passage

You can cruise straight from Gladstone Marina if it's an afternoon tide. If it's earlier, overnight at Grahams Creek, Targinie Creek or Black Swan and travel when the tide is higher. Coming in from the north, you can overnight at Deception Creek, Badger Creek or opposite the islands that mark the start of the drying out area of the crossing. Black Swan to Ramsay Crossing is 4NM. Get your tides right, consult your charts and enjoy the tranquillity.

Scan the QR Code for MSQ Beacon to Beacon guide to the Narrows. This guide contains maps of The Narrows from Graham Creek (Gladstone) through to Sea Hill Point (Keppel Bay).



The Narrows



Relax

Inshore Anchorages

The coastline around Gladstone Marina provides plenty of opportunity to explore, with sheltered anchorages providing a perfect place to relax, try your hand at fishing or to soak in the scenery.

Please keep your eye on the tides and consult your charts. Access to most places is possible for all, however the deeper draft vessels and access to anchorages is dependent on tides.

Town of 1770

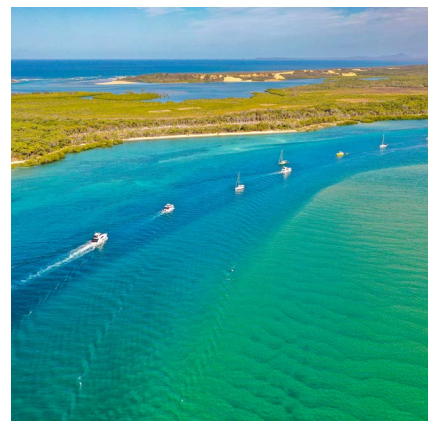
The Town of 1770 (also known as Seventeen Seventy) is a sheltered anchorage with beautiful clear water and spectacular sunsets. Contact Volunteer Marina Rescue Round Hill (Call Sign VMR 477 on VHF 81 or 82 or phone 07 4974 9383) for information on accessing the Town of 1770.

Access is tidal and the channel does shift. Fuel and basic supplies are available from the small marina. If you can't get in by water, it's a must do day trip from Gladstone Marina.



Pancake Creek

Pancake Creek is located approximately 60NM north of Bundaberg and approximately 30NM south of Gladstone, with high tides guaranteeing access for most vessels. Pancake Creek is in the lee of Bustard Head and is a truly wonderful anchorage known for its wilderness and natural beauty. There are a number of environmentally friendly moorings available for public use. Take time for a stopover and explore the



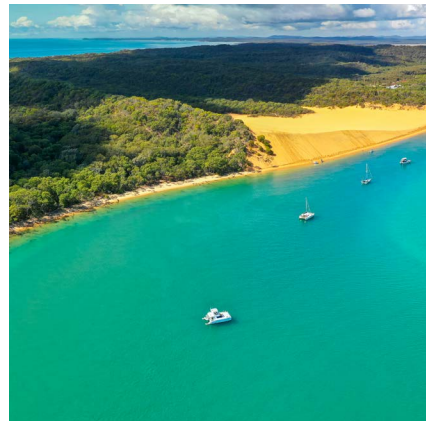
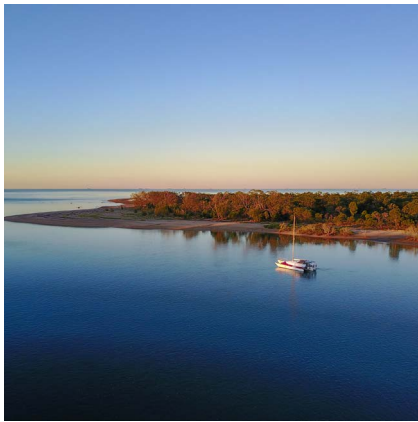
Bustard Head lighthouse and surrounds. The crabbing up the creek is excellent — a feast of freshly caught mud crabs, watching the sun go down on your back deck, is a fabulous way to finish your day! Or, simply rest and wait for the trade winds to ease when migrating south.

Above: Pancake Creek



Town of 1770

The perfect place to relax, try your hand at fishing or soak in the scenery



Rodds Harbour

West of Pancake Creek is the Rodds Peninsula and Rodds Harbour. There is deep water access to Rodds Harbour and Seven Mile Creek, and the area offers plenty of sheltered anchorage. Turkey Beach has a boat ramp, pontoon and a tidal swimming enclosure. The Turkey Beach general store is a short walk from the pontoon and can cater to most needs. Thornton Creek in Seven Mile Creek provides easy access to excellent shelter in extreme weather. The region is renowned for its national parks, dugong sanctuary, fishing and crabbing. So make sure you keep your eye out for dugongs and dolphins when cruising in; and when you anchor up, be sure to throw in a line to catch a fish for dinner — it won't get any fresher!

Continuing up the coast, Hummock Hill Island, Colosseum Inlet, Wild Cattle Island and Boyne River offer great fishing spots with extensive mangrove systems and wetlands. The Colosseum Inlet wetlands is a natural wonderland, considered to be of national importance as it's home to many rare and endangered species.

Gladstone Harbour Yellow Patch

Gladstone Harbour and Port Curtis provide numerous anchorages and shelter, where you can anchor for a relaxing lunch only a short cruise from the Gladstone Marina. Popular anchorages are off Oaks Beach, South End, Farmers Point and Gatcombe Head. Each spot has advantages in different weather conditions.

Curtis Island is a bird-spotter's heaven, with jabirus, herons, broilgas, sea eagles, wood ducks, black swans and the rare yellow chat all inhabiting the island. Stroll around and immerse yourself in its beauty or simply enjoy your very own tropical anchorage from the comfort of your vessel.

Grahams Creek is a large tidal inlet at the beginning of The Narrows, which extends into Curtis Island roughly 5NM eastward towards the coast. It is a good point to wait for tidal passage through The Narrows or seek shelter from inclement weather. Black Swan Island and Targinie Creek, behind Kangaroo Island, are also excellent options at the Gladstone end of The Narrows. This entire area is known for its impressive fishing and crabbing.

Yellow Patch is a beautiful anchorage on the northeast end of Curtis Island. Yellow Patch is named after the towering yellow sand hill, which creates a dramatic backdrop to the anchorage. The climb up the sand hill provides some exercise and a stunning view over the entrance, anchorage and on a clear day, all the way to Great Keppel Island. The entrance is tidal — check your charts and tides, and watch your depth among shifting sandbanks.

Above: Boyne River; South End, Gladstone; Yellow Patch



Yellow Patch

Image courtesy of @sailingbluefin



Your passport to the Reef

The Capricorn Bunker Group – Southern Great Barrier Reef

The Capricorn Bunker Group of islands and reefs is the perfect and accessible introduction to the Great Barrier Reef.

Cruising this section of the Southern Great Barrier Reef is an unforgettable experience and offers exceptional reef viewing, cruising, snorkelling and diving. The Southern Great Barrier Reef is rich in sea life, coral and scenery.

Navigation through the Capricorn Bunker Group can be effortless as most of the reefs have islands and wide channels between them.

Lady Musgrave Island

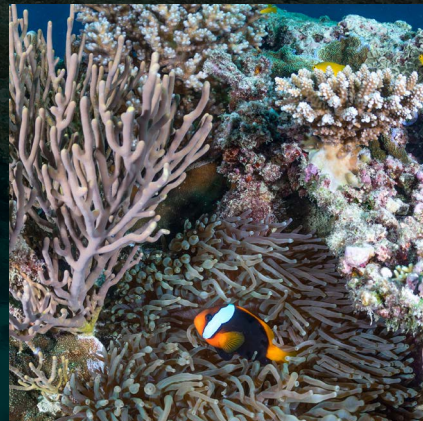
Lady Musgrave Island is instantly recognisable, with a large coral lagoon with deep water access. This tropical paradise and sheltered lagoon provides a safe anchorage and abounds with masses of fish, coral and turtles. Keep a look out for coral bommies when navigating in the lagoon, but with clear tropical water, spotting and avoiding them is easy and they are all marked on charts. Lady Musgrave is the jewel in the crown of the Southern Great Barrier Reef and very popular.

Fitzroy Reef

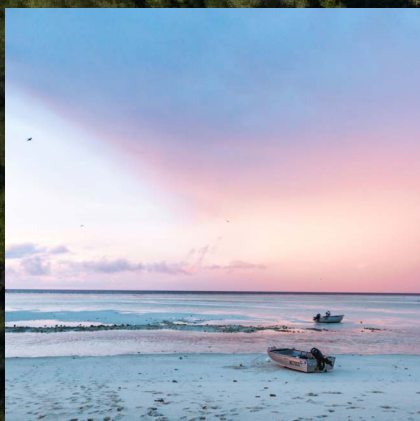
Fitzroy Reef is another stunning lagoon with a deep water entrance, but without a land mass. Deep anchorage on the southwest corner will protect from a north easterly and a north westerly wind. The deep water entrance is marked clearly for a good anchorage inside the lagoon. There is excellent fishing in the area.

Lady Musgrave Island

Images courtesy of Tourism
and Events Queensland



Fitzroy Reef



Wistari Reef

Adjacent to Heron Island, Wistari Reef is an elevated lagoon, which is shallow and crammed with coral. The best dive site on this reef is the brilliant Wistari Wall. This sloping wall drops from three metres to 20 metres and is decorated with many striking corals. There is also excellent reef walking and snorkelling. Shelter in the lee of the reef for anchorage.

Mast Head Island

Mast Head Island is a beautiful and accessible coral island close to Irving Reef, Polmaise Reef and Erskine Island. It is located just 31NM northeast of Gladstone. Boaters can shelter in the lee of the island to anchor in SE to NE winds. The island is popular with campers and day-trippers due to its close proximity to Gladstone.

North West Island

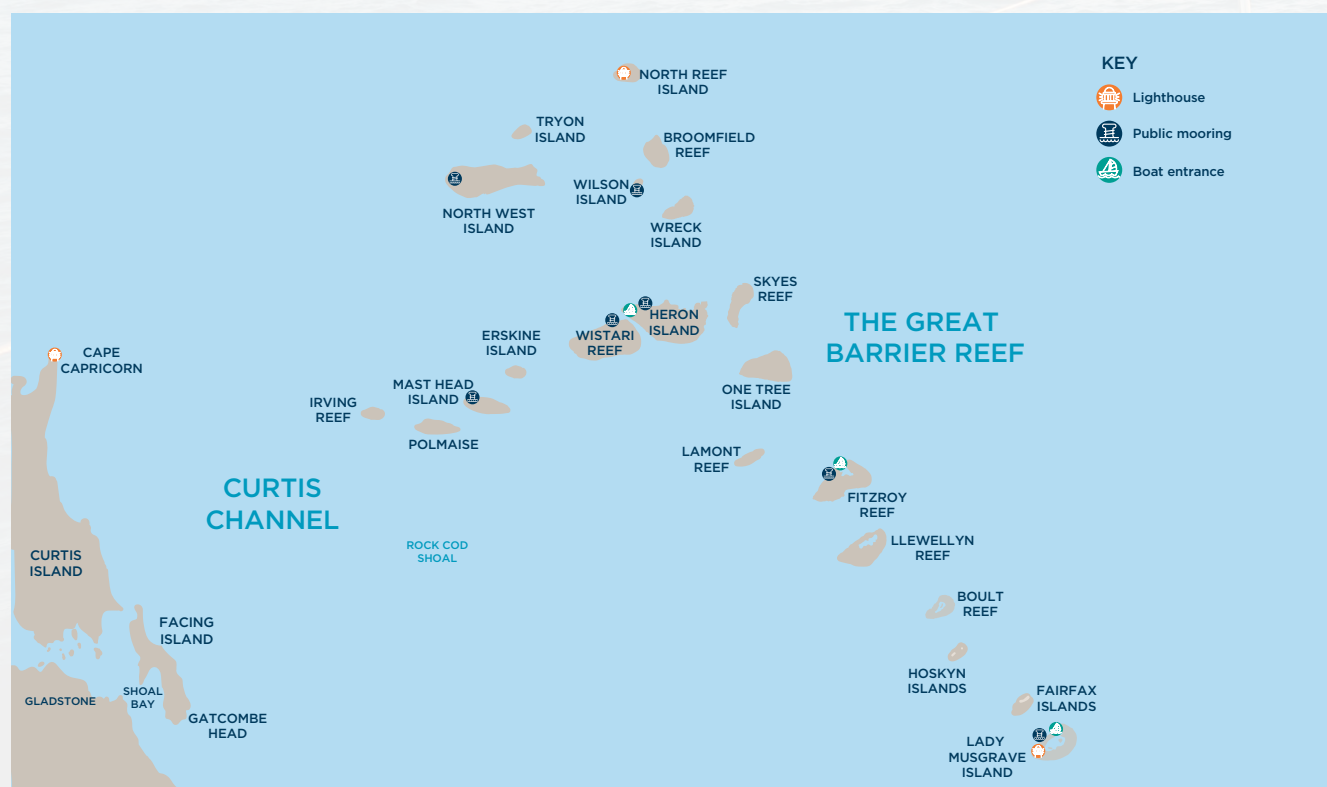
North West Island is a hidden gem of the Southern Great Barrier Reef and only 40NM northeast of Gladstone. It is the second largest coral cay in the area and offers opportunities for camping, bushwalking, nature study, reef walking, diving and snorkelling. Camping on the island requires a permit.

This is just a small selection of the islands and reefs in close proximity to Gladstone. Consult your charts and weather forecast and explore the numerous reefs and islands in the area at your leisure.

North West Island



Capricorn Bunker Group



Distance Chart

7 Mile/Rodds Harbour

75 Bundaberg

34 103 Black Swan (beginning of Narrows)

37 104 33 Cape Capricorn

8 70 28 29 Fairway Bouy

40 75 65 53 39 Fitzroy Reef

23 90 12 23 16 53 Gladstone Marina

30 97 5 30 24 60 7 Grahams Creek

68 126 34 23 59 92 47 38 Great Keppel Island

266 330 241 230 257 294 255 245 209 Hamilton Island

42 85 55 38 36 44 48 50 56 250 Heron Island

50 52 75 71 49 27 64 72 93 290 45 Lady Musgrave

33 85 43 27 24 26 31 38 48 245 14 44 Mast Head Island

25 90 17 18 14 48 7 12 42 250 39 64 26 North Entrance

47 120 52 29 42 35 40 47 43 230 16 62 15 35 North West Island

14 60 43 43 16 35 30 37 67 313 39 40 30 30 45 Pancake Creek

35 100 30 5 24 51 20 26 30 234 38 67 25 14 27 39 Rundle Island

58 140 15 18 47 80 26 19 19 230 56 101 45 37 44 57 22 Sea Hill (top of Narrows)

28 50 55 63 28 39 45 50 79 271 47 34 41 47 57 15 50 70 Town of 1770

49 107 34 3 31 54 26 32 25 230 41 72 30 20 30 46 6 18 56 Yellow Patch

143 38 48 42 80 93 - Yeppoon/Rossllyn Bay Via Narrows

71 150 38 32 112 82 57 10 236 66 101 57 50 53 74 36 23 86 33 - Yeppoon/Rossllyn Bay

Not for navigation purposes - approx milage only

1nm = at 1 knot = 1 hour travel time

10nm at 10knots = 1 hour travel time

eg 20nm at 10knots = 2 hour travel time

Fishing Adventures

The Gladstone region offers some of the best fishing in Australia.

From inshore to offshore, there is a plethora of fishing options to keep the casual or serious fisher entertained for a lifetime.

For a true fishing bucket list experience, there are a number of mothership charter operators that do extended voyages into the Coral Sea to fish remote reefs and atolls to catch wahoo, dogtooth tuna and mega coral trout.

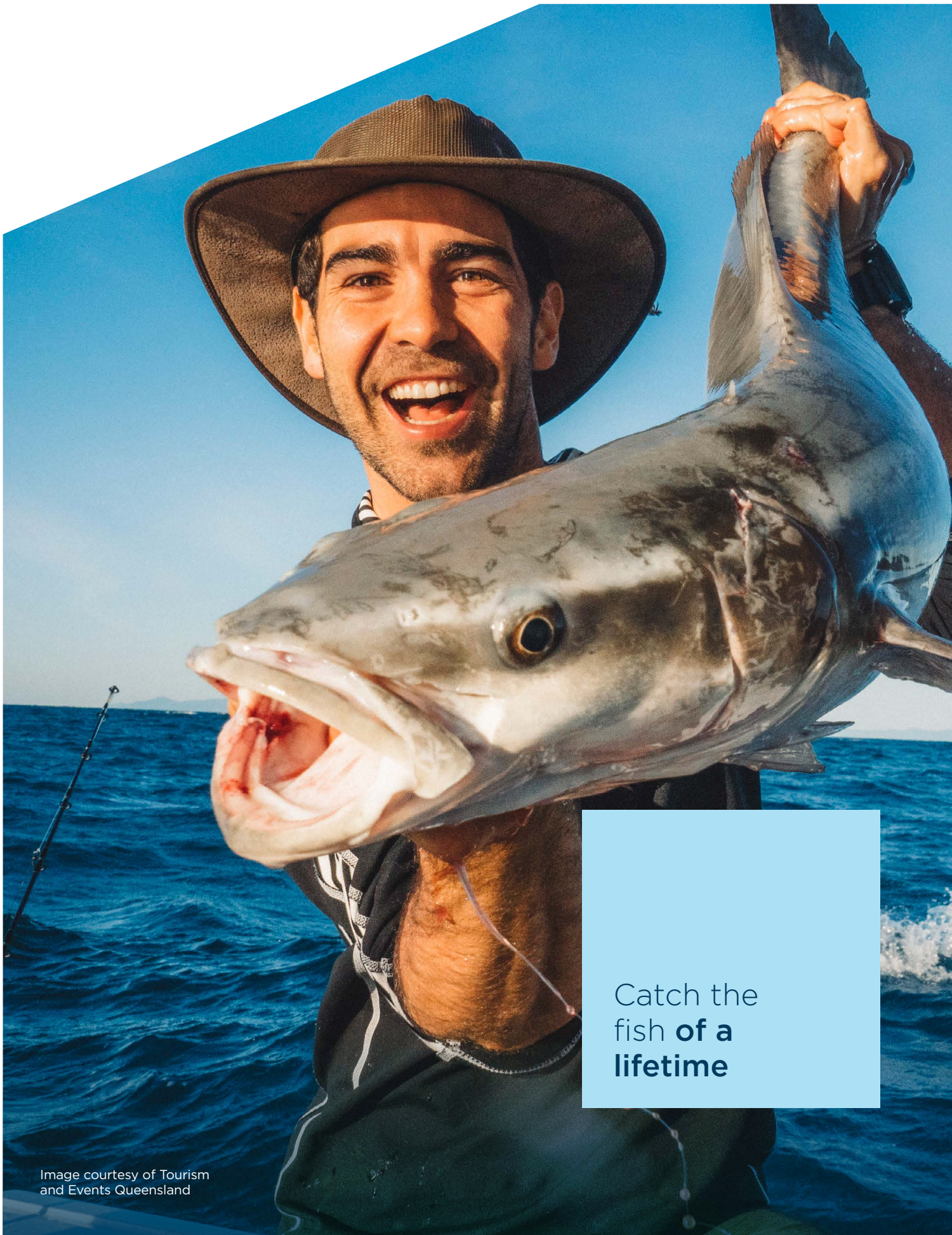
Locally, try your luck at any of the rocky points in the harbour for javelin fish (Grunter) and the iconic barramundi. Drop some baits or jigs down over Rock Cod Shoals for trout and red emperor, and keep your eyes open for birds working around schools of tuna, which can be caught by casting metal lures into the schools. Trolling large lures around any drop off or structure can result in huge (and delicious) Spanish mackerel, cobia or giant trevally that will stretch your arms and fishing tackle to their limits. The Gladstone Region is also home to a number of excellent and very

popular fishing competitions to try your hand at as well.

The local fishing tackle shops are happy to point you in the right direction, give advice on fin fish closures and provide free maps showing sanctuary zones where no fishing is allowed. These maps are also available online and through the Eye on the Reef zoning app. Zone 18 covers the Gladstone Region and Capricorn Bunker Group. Hefty fines apply, so please be sure you know where you can and can't fish.

Gladstone Marina supports sustainable fishing practices and encourages the use of artificial baits and lures. We encourage catch and release fishing practices (or take only what you need), so there is plenty for future generations to enjoy.

We'd love to hear about your adventures, particularly if you catch your fish of a lifetime, so let us know at the Gladstone Marina office.



Catch the
fish **of a**
lifetime

Image courtesy of Tourism
and Events Queensland

Explore

Whether you berth for one day to refresh, a week to relax, or a month to explore, there is a wide array of fun activities to do in the Gladstone region.

An information centre is located onsite in the Heron Island Ferry Terminal, a short stroll from the Marina, and is a wealth of information with brochures and material to browse.

One Day Itinerary

Take your time to refresh, stock up on essentials, gas, shopping, and fuel. Jump on our courtesy bus to get your shopping or visit the Chandlery for any maintenance needs.

Visit one of the many local cafes for breakfast and relax in our magnificent Marina Parklands, Spinnaker Park or East Shores.

Stretch your legs and take a stroll or bike ride to the Auckland Point look out for panoramic views of the harbour and islands.

Three Day Itinerary

One Day Itinerary +

Take your tender or stroll to the trawler wharf or wholesaler to buy fresh seafood direct off the boat, or visit the fish markets on the banks of Auckland Creek. Relax and picnic in the Marina Parklands with fresh prawns, scallops or bugs and a bottle of wine. Check with the Marina team to get the latest on which trawlers are in and what local produce may be available.

Wander further to the Gladstone Ports Corporation's East Shores precinct for magnificent harbour views and local dining experiences. Sample delicious dishes and locally brewed beers named after Gladstone Harbour islands. Watch the ships come and go and marvel at their size.

Spend some time in the new Marina Lounge and meet fellow boat owners. Try your hand at bocce or giant Jenga.

Seven Day Itinerary

One & Three Day Itinerary +

Hire a car and explore the Gladstone region further afield.

Explore Tannum Sands and Lake Awoonga for the day — it's a short drive at only 30 kilometres south of Gladstone. Awoonga Dam and Tannum Sands Beach offer BBQs, picnic and park facilities to enjoy.

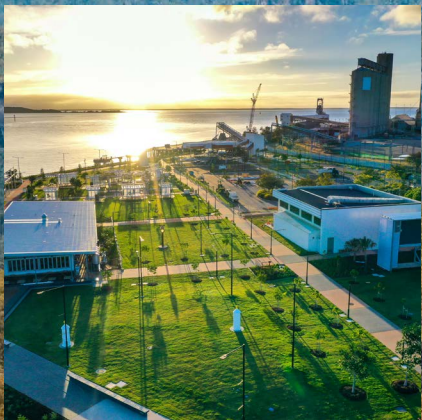
Take a day trip to Agnes Water and the Town of 1770 — the east coast's furthest north surf beach. The crystal clear tropical water and gentle rolling waves are perfect to learn surfing or hang ten for the more experienced. Surf lessons and board hire are available from a number of different local operators.

Grab a bite to eat and check out the local homewares, handmade gifts and fresh produce at one of the many weekend markets — most of them are free or a gold coin donation.



**Stay longer
to discover**
our region's
hidden secrets

East Shores, Gladstone



L to R: East Shores and Marina Parklands, Gladstone

14-day Itinerary

One, Three & Seven Day Itineraries +

Get those hiking boots on and trek the magnificent Mount Larcom, west of Gladstone. It's a solid walk, but will get you back to nature for a couple of hours.

Go further afield and spend a few nights in the Central Queensland gemfields and fossick for your next priceless stone. Along the way, you'll find Mount Hay — renowned for its unique thunder eggs — and the aptly named towns of Sapphire, Emerald and Rubyvale. The information centre near the Marina can offer advice on sites to see and where to stay.

Explore the Krombit Tops National Park — the sandstone escarpments, gorges, creeks and waterfalls provide a cool retreat and offer a scenic drive, hiking, walking or cycling experience.

If time permits, head out to Carnarvon Gorge, hidden in the rugged ranges of Queensland's Central Highlands. Take your pick and camp out or glam up in one of the many accommodations. Walk through the magnificent gorge and spy the shy and elusive platypus, as well as some of the best preserved Indigenous rock art in Australia.

Whether you simply relax and refresh within the Marina Parklands — making the most of our many eateries, fantastic facilities and welcoming staff — or explore further afield, Gladstone Marina is ideally positioned as your home away from home.

Celebrate Easter in Gladstone

Plan your getaway and celebrate the iconic Gladstone Ports Corporation Brisbane to Gladstone Yacht Race each Easter.

Anchor down at Gladstone Marina and watch the spectacular yachts cross the finish line from the magnificent Marina Parklands, Spinnaker Park or the award-winning East Shores.

Join in the fun and festivities at the Gladstone Harbour Festival and the B2G Village, or pack a picnic, play in the waterpark or simply relax and explore the foreshore. For details visit www.gpcl.com.au/b2gyachtrace

Carnarvon Gorge

Images courtesy of Tourism and Events Queensland



L to R: Carnarvon Gorge; Lake Awoonga; Town of 1770



Environment Guide

Gladstone Marina and Gladstone Ports Corporation (GPC) are dedicated to sustainable environmental practices through stringent environmental management and monitoring.

GPC has a dedicated Environment team that works with Marina staff to achieve the Marina's environmental goals. The excellent boating in the region relies on a pristine environment and we all have a duty to look after it. Gladstone Marina is proud to be an internationally accredited Clean Marina and Fish Friendly Marina, and runs an environmental management system certified to ISO 140001.

The Gladstone Marina:

- is the First Strike Oil response team
- manages biosecurity risks through awareness and a dedicated quarantine area
- provides bilge socks for Marina users (oil absorbent pads)
- provides sullage pump-out facilities for Marina users

- monitors air and water quality
- manages a comprehensive recycling and waste disposal, which includes recycling for batteries, as well as waste and collection points for oil filters and oil
- provides marine pest information at the Marina office.

Elimination of Single Use Plastics

Gladstone Marina and GPC joined the fight to eliminate plastic waste by taking the Marina Industries Association (MIA) pledge to become a plastic-free marina by 2025.

The pledge is part of GPC's involvement in the *International Clean Marina Program* managed by the MIA — a voluntary, incentive-based education and outreach program.



Gladstone Marina will become **plastic-free** by 2025

GPC signed the MIA pledge ahead of Plastic Free July in 2020, along with 55 other marinas across Australia and the globe, including New Zealand, Fiji, Hong Kong and Papua New Guinea.

GPC is committed to reducing the carbon footprint on the environment by providing tap water for park users and encouraging eco-friendly habits.



Courtesy of Tourism and Events Queensland



Green Turtle Nesting on Wilson Island

Our Local Turtles

We have a variety of different turtle species frequenting Gladstone Beaches and our nearby Islands and Reefs, including Green Turtles, Loggerheads and Flatbacks.

Green Turtles and Loggerheads prefer the Islands of the bunker group for nesting. Whilst the Flatback turtle are the most common turtle species to nest directly around Gladstone.

They are named for the distinctive shape of their shell which is almost flat and with upturned edges. This shell grows heart-shaped and can be up to one metre long!

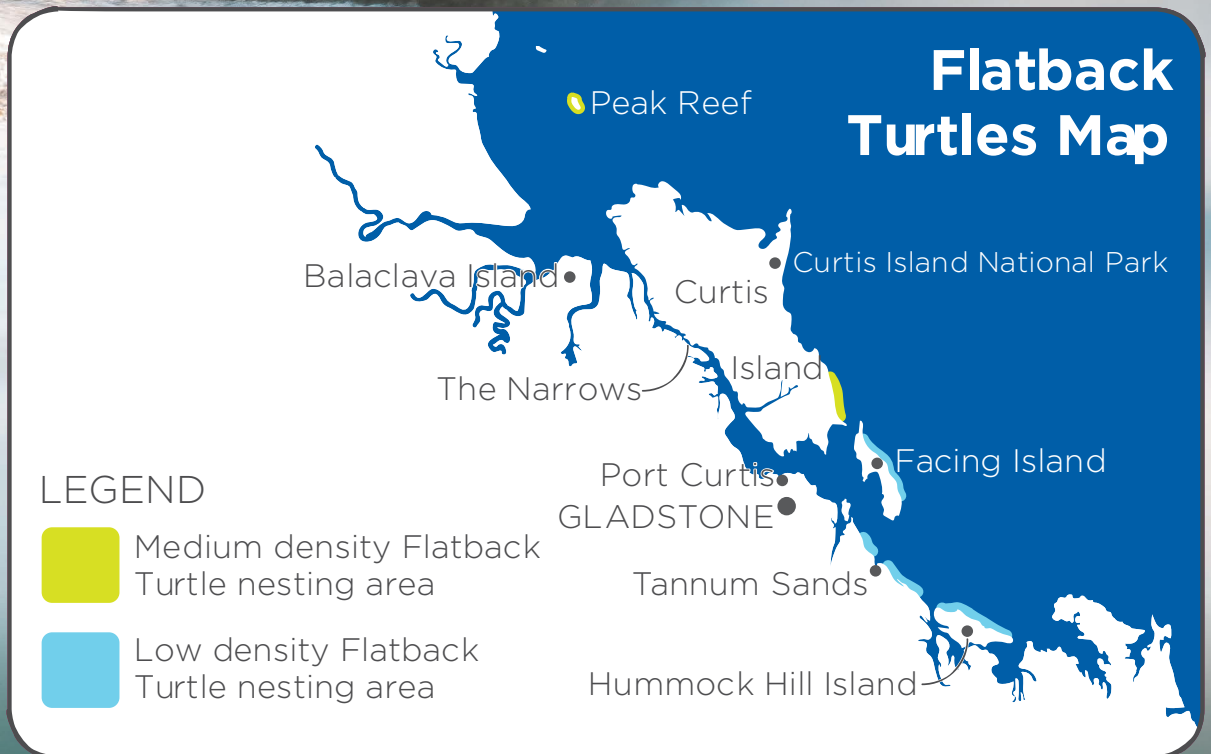
As a baby (or hatchling), flatbacks are grey in colour, with scales outlined in black and a white belly.

As they get older, their flippers and head turn an olive-grey colour and their underside (called a 'plastron') becomes a pale yellow.

Flatbacks grow slowly and it takes decades for them to develop into a breeding adult.

Gladstone is lucky to have a number of important flatback rookeries (or nesting sites) nearby. Check out the map below to see where you might find them during nesting season (although never touch them or get too close!).

Green Turtles love feeding on our extensive Sea Grass meadows, whilst Loggerheads and Flatbacks are carnivorous feeding on Jelly Fish, Soft Corals and crabs.



Flatback Turtle Habitat Map

Emergency Information

If you need an ambulance, firefighter or police, call 000 and contact the Gladstone Marina office. An Alarmed and monitored Automated External Defibrillator (AED) Is available in the Marina Breezeway under the Marina Office.

Fire Procedure

On arrival, make yourself familiar with emergency evacuation points and emergency equipment layout.

In case of fire, call 000, contact the Gladstone Marina office or contact after-hours security on 07 4976 1213.

Follow Gladstone Marina staff directions and evacuate to your nearest evacuation point. If your path to the evacuation point is obstructed make your way to the end of the Marina Arm for evacuation by water.

Extreme Weather Preparation

While the likelihood of a cyclone in Gladstone is small (the last Cyclone directly through Gladstone was in 1949), good preparation and plans will help ensure you and your vessel are best placed to deal with any extreme weather event. The Gladstone Marina Cyclone Management Plan is part of the Marina Emergency Management Plan. Each plan includes a number of jobs and checklists that our team follows before, during and after any extreme weather event.

The Marina team is highly trained on how to manage these events, ensuring your vessels and Gladstone Marina is in the best possible hands.

Scan the QR code to see our Cyclone and Severe Weather Event Checklist



- **Ensure** that all contact details provided to Gladstone Marina are up to date.
 - **Check** your insurance. It is compulsory and a requirement of your berthing to maintain insurance against any damage to vessels, environmental clean-up (discharge of any fuels, lubricants and sewage from holding tanks) and salvage.
 - **Observe** neighbouring vessels for anything that may become hazardous to your vessel and surrounding vessels. If you see anything of concern, please contact the Marina office at your earliest convenience.
 - **Check** the Bureau of Meteorology for regular updates — www.bom.gov.au.
 - **Refer** to the Maritime Safety Queensland Gladstone website for Heavy Weather Event Procedure and alert warning systems (Extreme Weather Event Contingency Plan 2023/24).
 - **Determine** your plan as a vessel owner to manage your vessel in a cyclone event. Have a cyclone plan and ensure your family and crew are aware of it.
 - **Consider** arrangements for access to your vessel by other parties (to secure or remove a vessel).
 - **Comply** with all Marina mooring rules and directives.
 - **Lessen** windage on your vessel and consider removing booms, solar panels and clears.
 - **Use** long mooring lines and double them up. Do not tie off to a pile without consulting Marina Operations staff.
 - **Remove** all loose equipment and lash down dinghies and tenders if they cannot be removed altogether.
 - **Always** follow all Marina Operations staff directions.
 - **Always** follow Regional Harbour Master directions.
- If there is a Watch and Act Alert (12-24 hours before the event), it is our policy to remove all vessels from fixed wharves (service wharf and pilot wharf) to appropriately sized floating berths, if available.**

EVACUATION PROTOCOL

- ON HEARING THE ALARM:-
1. EXIT THE BUILDING IMMEDIATELY BY THE NEAREST SAFE EXIT.
 2. PROCEED IN AN ORDERLY MANNER TO THE DESIGNATED ASSEMBLY POINT.
 3. ADVISE A WARDEN IF YOU ARE AWARE OF PEOPLE THAT HAVE NOT ARRIVED AT THE ASSEMBLY POINT.
 4. REMAIN AT THE ASSEMBLY POINT UNTIL THE ALL-CLEAR IS GIVEN.

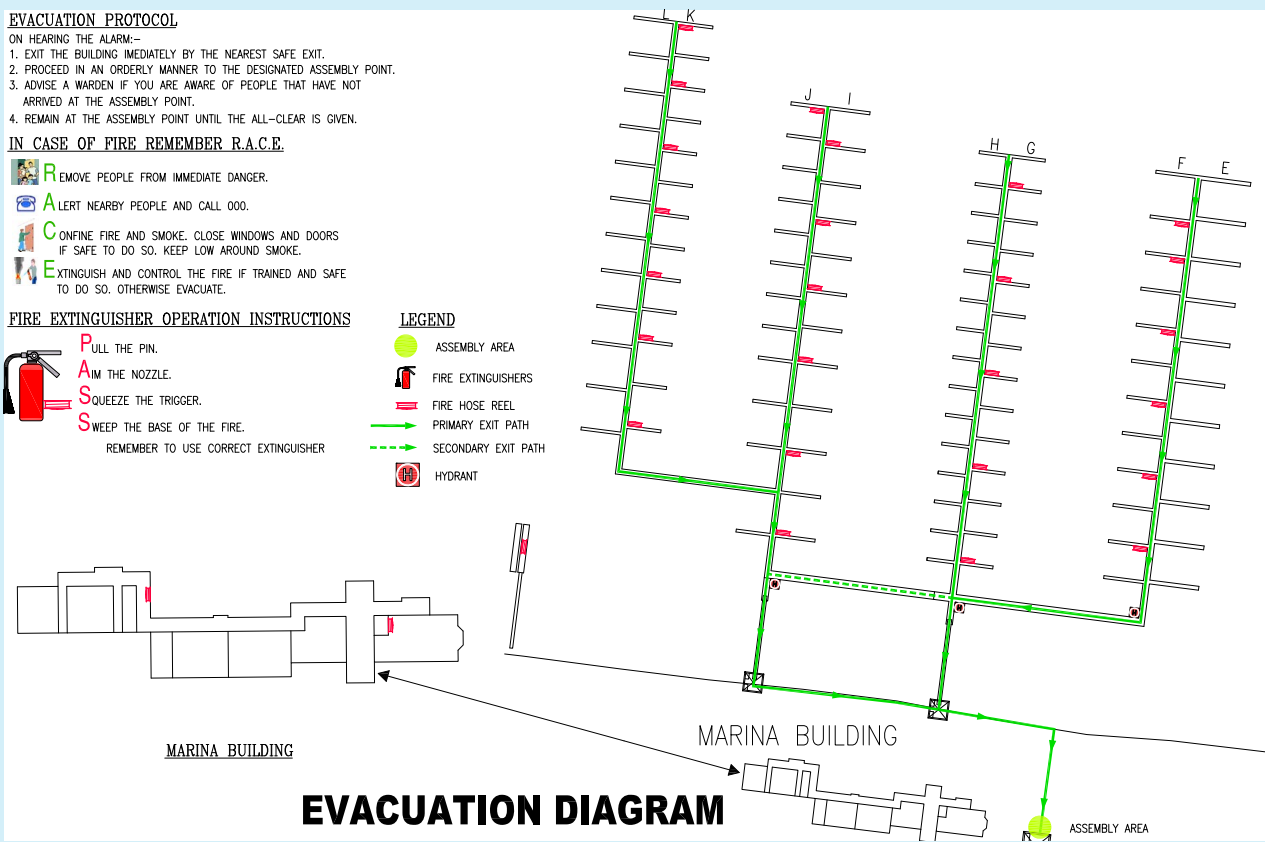
IN CASE OF FIRE REMEMBER R.A.C.E.

- R**EMOVE PEOPLE FROM IMMEDIATE DANGER.
- A**LERT NEARBY PEOPLE AND CALL 000.
- C**ONFINE FIRE AND SMOKE. CLOSE WINDOWS AND DOORS IF SAFE TO DO SO. KEEP LOW AROUND SMOKE.
- E**XTINGUISH AND CONTROL THE FIRE IF TRAINED AND SAFE TO DO SO. OTHERWISE EVACUATE.

FIRE EXTINGUISHER OPERATION INSTRUCTIONS

- P**ULL THE PIN.
 - A**IM THE NOZZLE.
 - S**QUEEZE THE TRIGGER.
 - S**WEEP THE BASE OF THE FIRE.
- REMEMBER TO USE CORRECT EXTINGUISHER

- LEGEND**
- ASSEMBLY AREA
 - FIRE EXTINGUISHERS
 - FIRE HOSE REEL
 - PRIMARY EXIT PATH
 - SECONDARY EXIT PATH
 - HYDRANT



EVACUATION DIAGRAM

EVACUATION PROTOCOL

- ON HEARING THE ALARM:-
1. EXIT THE BUILDING IMMEDIATELY BY THE NEAREST SAFE EXIT.
 2. PROCEED IN AN ORDERLY MANNER TO THE DESIGNATED ASSEMBLY POINT.
 3. ADVISE A WARDEN IF YOU ARE AWARE OF PEOPLE THAT HAVE NOT ARRIVED AT THE ASSEMBLY POINT.
 4. REMAIN AT THE ASSEMBLY POINT UNTIL THE ALL-CLEAR IS GIVEN.

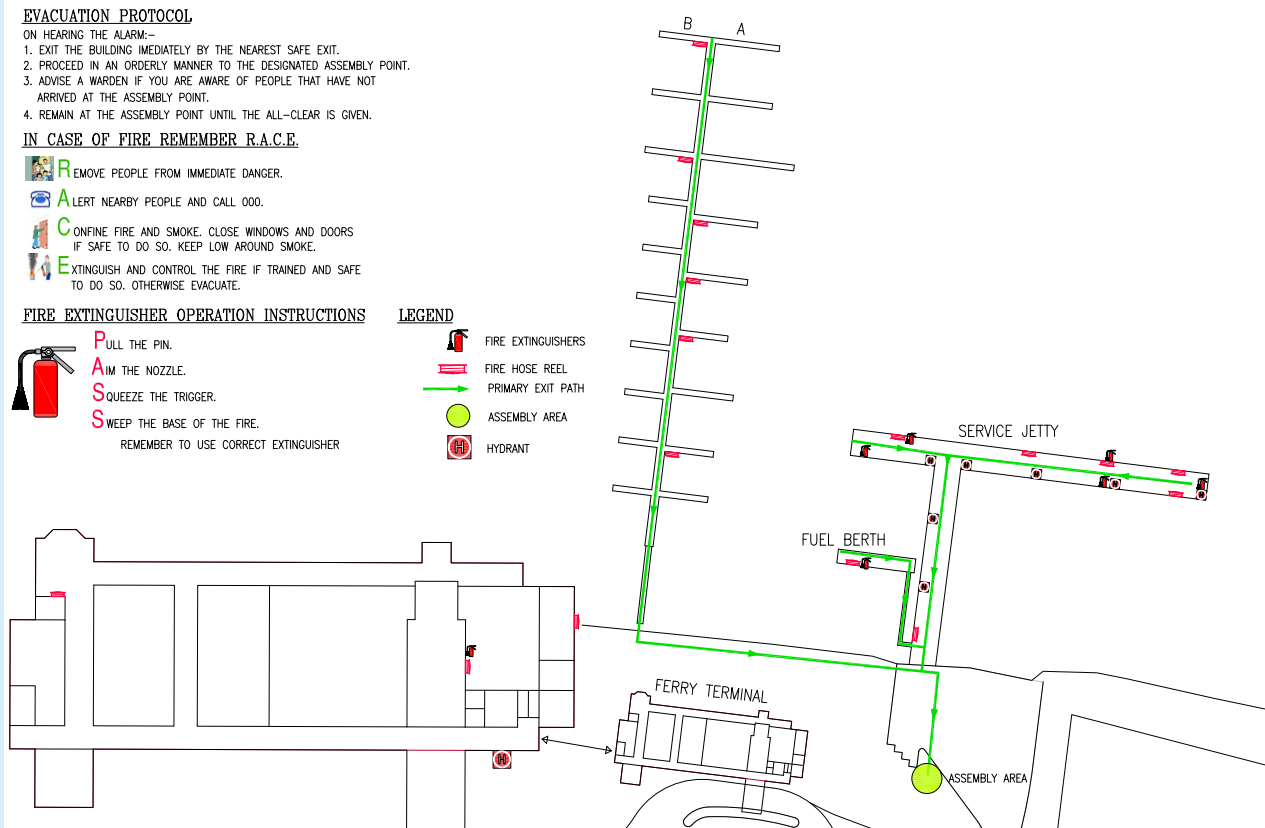
IN CASE OF FIRE REMEMBER R.A.C.E.

- R**EMOVE PEOPLE FROM IMMEDIATE DANGER.
- A**LERT NEARBY PEOPLE AND CALL 000.
- C**ONFINE FIRE AND SMOKE. CLOSE WINDOWS AND DOORS IF SAFE TO DO SO. KEEP LOW AROUND SMOKE.
- E**XTINGUISH AND CONTROL THE FIRE IF TRAINED AND SAFE TO DO SO. OTHERWISE EVACUATE.

FIRE EXTINGUISHER OPERATION INSTRUCTIONS

- P**ULL THE PIN.
 - A**IM THE NOZZLE.
 - S**QUEEZE THE TRIGGER.
 - S**WEEP THE BASE OF THE FIRE.
- REMEMBER TO USE CORRECT EXTINGUISHER

- LEGEND**
- FIRE EXTINGUISHERS
 - FIRE HOSE REEL
 - PRIMARY EXIT PATH
 - ASSEMBLY AREA
 - HYDRANT



Persons Overboard in the Marina

If you fall in the water try and get the attention of other marina users. There are life rings and emergency ladders located at each gangway. Swim Ladders on the stern of a vessel may be your closest and best option. On page 39 are examples of various swim ladders found around the marina. When next walking on the marina, we encourage you to make yourself familiar with the boats in your area for this purpose. If there are no swim ladders easily accessible. You can use the emergency ladder located at the gangway.

To use the Emergency ladder:

1. Remove from PVC Bag
2. Place Loops over cleat horns
3. Undo bottom of bag to allow ladder to drop out into water.

You may still need assistance using the ladder to exit the water. Be aware of marine growth causing lacerations and scratches.

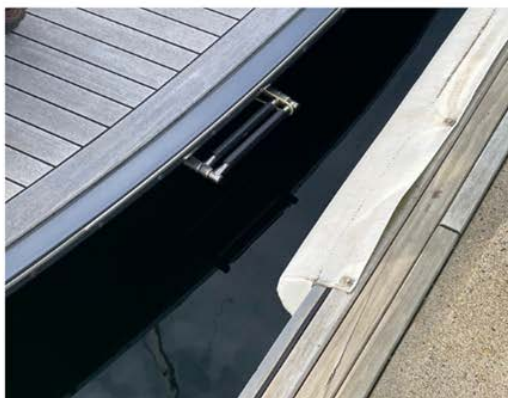
4. Notify Marina Staff on 07 4976 1399 or
After Hours Security 07 4976 1222



L to R: Steps on how to use the Emergency Ladder

Swim Ladders

Come in different shapes & sizes / are found on the stern of many vessels



Please familiarise yourself with the vessels in your area of the marina, chat with your neighbours and even come up with your own POB exit the water plan...

Bureau of Meteorology

Tide Tables

GLADSTONE – QUEENSLAND

LAT 23° 50' S LONG 151° 15' E

Times and Heights of High and Low Waters

2025

Local Time

JANUARY				FEBRUARY				MARCH				APRIL			
Time	m	Time	m	Time	m	Time	m	Time	m	Time	m	Time	m	Time	m
1 0326	0.83	16 0430	0.94	1 0446	0.68	16 0501	1.16	1 0354	0.49	16 0411	0.99	1 0504	0.78	16 0447	1.29
1002	4.32	1050	4.31	1107	4.49	1113	3.97	1006	4.63	1013	4.00	1105	3.85	1036	3.33
WE 1635	0.94	TH 1713	1.00	SA 1736	0.71	SU 1725	1.11	SA 1630	0.47	SU 1620	0.93	TU 1715	0.80	WE 1622	1.15
2223	3.44	2313	3.46	2333	3.87	2334	3.63	2231	4.25	2233	3.93	2337	4.35	2301	3.86
2 0407	0.84	17 0501	1.08	2 0528	0.84	17 0528	1.37	2 0434	0.56	17 0437	1.13	2 0552	1.09	17 0520	1.47
1043	4.33	1124	4.15	1147	4.30	1140	3.72	1045	4.46	1037	3.80	1153	3.46	1104	3.12
TH 1716	0.93	FR 1745	1.11	SU 1815	0.83	MO 1747	1.25	SU 1708	0.56	MO 1640	1.04	WE 1751	1.14	TH 1644	1.32
2304	3.45	2345	3.39					2313	4.25	2300	3.86			2335	3.70
3 0450	0.90	18 0530	1.26	3 0017	3.83	18 0005	3.52	3 0515	0.76	18 0505	1.32	3 0030	4.11	18 0559	1.65
1125	4.28	1155	3.97	0611	1.10	0558	1.62	1124	4.17	1102	3.55	0650	1.43	1140	2.93
FR 1759	0.95	SA 1814	1.22	MO 1230	4.01	TU 1211	3.43	MO 1744	0.76	TU 1700	1.19	TH 1252	3.09	FR 1713	1.51
2349	3.45			1855	1.01	1813	1.42	2356	4.16	2329	3.74	1838	1.49		
4 0534	1.02	19 0017	3.31	4 0108	3.75	19 0044	3.38	4 0600	1.07	19 0534	1.54	4 0133	3.85	19 0019	3.54
1210	4.18	0559	1.48	0701	1.41	0638	1.89	1207	3.78	1130	3.28	0812	1.67	0655	1.81
SA 1844	1.01	SU 1228	3.75	TU 1318	3.66	WE 1249	3.13	TU 1820	1.04	WE 1719	1.37	FR 1412	2.84	SA 1238	2.76
		1844	1.34	1942	1.22	1845	1.63					2006	1.76	1800	1.72
5 0039	3.43	20 0055	3.23	5 0211	3.65	20 0139	3.23	5 0045	3.99	20 0001	3.57	5 0258	3.68	20 0127	3.42
0623	1.20	0636	1.72	0815	1.70	0755	2.12	0651	1.44	0610	1.78	0952	1.67	0821	1.86
SU 1258	4.02	MO 1304	3.51	WE 1420	3.31	TH 1348	2.86	WE 1257	3.37	TH 1201	3.00	SA 1557	2.84	SU 1407	2.71
1931	1.09	1919	1.47	2045	1.41	1945	1.82	1903	1.35	1745	1.59	2153	1.80	1936	1.87
6 0136	3.42	21 0145	3.15	6 0330	3.62	21 0304	3.17	6 0147	3.78	21 0045	3.39	6 0430	3.71	21 0256	3.43
0722	1.42	0738	1.96	1000	1.80	1005	2.12	0809	1.75	0709	2.00	1118	1.49	0953	1.72
MO 1352	3.81	TU 1352	3.25	TH 1546	3.06	FR 1519	2.71	TH 1408	3.00	FR 1257	2.76	SU 1728	3.09	MO 1545	2.85
2026	1.16	2008	1.59	2205	1.49	2120	1.89	2014	1.63	1830	1.82	2321	1.61	2127	1.80
7 0245	3.45	22 0254	3.12	7 0500	3.74	22 0444	3.29	7 0312	3.65	22 0200	3.25	7 0541	3.86	22 0418	3.61
0839	1.59	0923	2.08	1138	1.65	1131	1.91	1002	1.81	0903	2.08	1215	1.26	1104	1.44
TU 1454	3.59	WE 1454	3.03	FR 1733	3.03	SA 1710	2.79	FR 1556	2.84	SA 1435	2.84	MO 1825	3.39	TU 1703	3.15
2129	1.19	2115	1.66	2331	1.44	2243	1.77	2156	1.73	2017	1.97			2250	1.56
8 0400	3.57	23 0421	3.21	8 0617	3.97	23 0557	3.57	8 0451	3.71	23 0345	3.29	8 0022	1.38	23 0524	3.86
1011	1.63	1052	1.99	1249	1.38	1229	1.63	1141	1.59	1048	1.89	0632	4.00	1200	1.13
WE 1605	3.40	TH 1613	2.92	SA 1852	3.21	SU 1822	3.03	SA 1745	3.01	SU 1630	2.76	TU 1257	1.09	WE 1801	3.51
2236	1.18	2223	1.63			2353	1.55	2336	1.60	2204	1.87	1908	3.63		
9 0514	3.78	24 0536	3.42	9 0047	1.27	24 0647	3.88	9 0608	3.93	24 0511	3.54	9 0107	1.19	24 0000	1.28
1135	1.52	1159	1.79	0716	4.20	1315	1.34	1242	1.31	1153	1.58	0714	4.07	0617	4.08
TH 1725	3.30	FR 1740	2.95	SU 1343	1.14	MO 1911	3.29	SU 1848	3.31	MO 1747	3.06	WE 1331	0.98	TH 1247	0.84
2342	1.11	2322	1.52	1947	3.41					2326	1.60	1944	3.88	1850	3.86
10 0620	4.03	25 0629	3.68	10 0143	1.07	25 0054	1.27	10 0045	1.34	25 0610	3.86	10 0145	1.06	25 0057	1.00
1245	1.32	1252	1.57	0804	4.36	0730	4.16	0703	4.14	1242	1.26	0748	4.09	0705	4.21
FR 1842	3.30	SA 1844	3.08	MO 1426	0.98	TU 1357	1.08	MO 1327	1.09	TU 1839	3.39	TH 1402	0.91	FR 1331	0.60
				2030	3.57	1953	3.54	1934	3.56			2015	3.91	1936	4.16
11 0045	1.02	26 0017	1.37	11 0227	0.92	26 0145	0.99	11 0132	1.11	26 0030	1.28	11 0217	1.00	26 0147	0.77
0717	4.26	0713	3.93	0844	4.43	0812	4.40	0746	4.27	0658	4.16	0819	4.06	0750	4.25
SA 1345	1.12	SU 1337	1.35	TU 1504	0.89	WE 1437	0.84	TU 1404	0.96	WE 1326	0.95	FR 1430	0.87	SA 1413	0.44
1943	3.36	1932	3.24	2107	3.67	2033	3.77	2013	3.73	1924	3.71	2045	4.00	2019	4.42
12 0141	0.93	27 0108	1.19	12 0305	0.84	27 0230	0.75	12 0211	0.96	27 0123	0.97	12 0248	0.98	27 0234	0.62
0807	4.41	0754	4.14	0919	4.44	0850	4.57	0822	4.32	0741	4.38	0847	3.99	0834	4.19
SU 1434	0.96	MO 1419	1.16	WE 1538	0.86	TH 1515	0.63	WE 1438	0.89	TH 1406	0.69	SA 1454	0.84	SU 1453	0.38
2034	3.44	2015	3.39	2141	3.73	2112	3.98	2045	3.83	2005	4.00	2112	4.06	2103	4.60
13 0230	0.85	28 0156	1.00	13 0338	0.83	28 0313	0.57	13 0245	0.88	28 0210	0.71	13 0318	0.99	28 0321	0.57
0852	4.48	0833	4.32	0951	4.39	0929	4.66	0852	4.30	0821	4.51	0915	3.88	0918	4.04
MO 1519	0.88	TU 1500	0.98	TH 1610	0.88	FR 1554	0.50	TH 1507	0.86	FR 1445	0.48	SU 1517	0.85	MO 1532	0.43
2119	3.50	2054	3.54	2212	3.74	2151	4.15	2115	3.90	2046	4.25	2138	4.09	2147	4.66
14 0315	0.82	29 0242	0.83	14 0408	0.88	29 0230	0.75	14 0315	0.87	29 0254	0.54	14 0347	1.04	29 0408	0.64
0934	4.49	0912	4.46	1020	4.30	1047	4.16	0920	4.25	0901	4.53	0943	3.73	1005	3.81
TU 1600	0.86	WE 1539	0.82	FR 1637	0.93	2241	3.73	FR 1534	0.85	SA 1524	0.37	MO 1540	0.91	TU 1612	0.61
2200	3.52	2132	3.67					2143	3.94	2127	4.44	2204	4.06	2234	4.60
15 0354	0.84	30 0324	0.70	15 0435	1.00	30 0337	0.48	15 0344	0.91	30 0337	0.48	15 0416	1.15	30 0457	0.82
1014	4.42	0950	4.56	1047	4.16	0946	4.15	0946	4.15	0941	4.42	1010	3.54	1055	3.53
WE 1638	0.91	TH 1618	0.71	SA 1702	1.00	2208	3.95	SA 1558	0.87	SU 1601	0.39	TU 1600	1.01	WE 1652	0.88
2237	3.51	2211	3.79	2308	3.69			2208	3.95	2208	4.53	2232	3.99	2324	4.41
		31 0406	0.64							31 0420	0.56				
		1029	4.58							1022	4.19				
		FR 1658	0.67							MO 1638	0.53				
		2251	3.86							2251	4.50				

© Copyright Commonwealth of Australia 2024, Bureau of Meteorology

Datum of Predictions is Lowest Astronomical Tide

Times are in local standard time (Time Zone UTC +10:00)

Moon Phase Symbols ● New Moon ○ First Quarter ○ Full Moon ● Last Quarter

The Bureau of Meteorology gives no warranty of any kind whether express, implied, statutory or otherwise in respect to the availability, accuracy, currency, completeness, quality or reliability

of the information or that the information will be fit for any particular purpose or will not infringe any third-party Intellectual Property rights.

The Bureau's liability for any loss, damage, cost or expense resulting from use of, or reliance on, the information is entirely excluded.

GLADSTONE – QUEENSLAND

LAT 23° 50' S LONG 151° 15' E

Times and Heights of High and Low Waters

2025

Local Time

MAY		JUNE		JULY		AUGUST					
Time	m	Time	m	Time	m	Time	m				
1 0549	1.06	16 0513	1.35	1 0100	3.97	16 0022	3.97	1 0131	3.12	16 0139	3.18
1149	3.24	1056	3.06	0730	1.27	1226	3.13	0745	1.41	0804	1.20
TH 1735	1.20	FR 1628	1.23	SU 1337	3.01	MO 1800	1.28	FR 1435	3.09	SA 1448	3.52
		2322	3.82	1928	1.57			2058	1.94	2110	1.65
2 0018	4.16	17 0556	1.46	2 0157	3.77	17 0046	3.87	2 0150	3.53	17 0110	3.76
0649	1.31	1138	2.96	0826	1.36	0726	1.21	0814	1.32	0744	1.02
FR 1251	3.00	SA 1705	1.37	MO 1440	3.00	TU 1324	3.15	WE 1442	3.08	TH 1400	3.43
1833	1.51			2038	1.69	1900	1.40	2042	1.78	1948	1.45
3 0122	3.91	18 0008	3.72	3 0254	3.62	18 0143	3.78	3 0239	3.32	18 0206	3.50
0800	1.48	0648	1.54	0924	1.38	0823	1.18	0904	1.37	0842	1.09
SA 1404	2.87	SU 1234	2.89	TU 1549	3.09	WE 1431	3.23	TH 1548	3.14	FR 1511	3.48
2000	1.72	1758	1.53	2148	1.71	2015	1.50	2200	1.83	2116	1.58
4 0234	3.74	19 0107	3.64	4 0352	3.52	19 0245	3.69	4 0337	3.15	19 0315	3.27
0915	1.51	0753	1.55	1020	1.34	0926	1.11	0959	1.37	0948	1.11
SU 1528	2.92	MO 1346	2.90	WE 1654	3.25	TH 1543	3.40	FR 1658	3.28	SA 1627	3.63
2126	1.75	1916	1.65	2255	1.65	2141	1.51	2312	1.74	2251	1.52
5 0349	3.68	20 0217	3.64	5 0449	3.46	20 0350	3.60	5 0446	3.05	20 0438	3.12
1030	1.43	0904	1.45	1110	1.26	1028	1.01	1051	1.32	1057	1.08
MO 1646	3.11	TU 1507	3.03	TH 1747	3.45	FR 1651	3.65	SA 1755	3.48	SU 1742	3.85
2243	1.64	2049	1.64	2352	1.55	2303	1.41				
6 0455	3.71	21 0330	3.70	6 0542	3.42	21 0458	3.53	6 0012	1.58	21 0013	1.32
1129	1.29	1013	1.25	1152	1.17	1127	0.89	0554	3.04	0604	3.11
TU 1745	3.36	WE 1620	3.28	FR 1832	3.65	SA 1755	3.93	SU 1140	1.25	MO 1205	1.00
2344	1.48	2214	1.51					1842	3.68	1646	4.09
7 0547	3.75	22 0435	3.80	7 0040	1.42	22 0015	1.23	7 0101	1.41	22 0118	1.07
1213	1.16	1113	1.02	0629	3.39	0605	3.47	0649	3.07	0715	3.21
WE 1830	3.59	TH 1724	3.61	SA 1229	1.09	SU 1223	0.79	MO 1224	1.16	TU 1311	0.88
		2328	1.31	1911	3.82	1852	4.19	1922	3.85	1943	4.29
8 0032	1.34	23 0535	3.87	8 0122	1.31	23 0117	1.04	8 0144	1.26	23 0212	0.85
0630	3.78	1206	0.81	0713	3.37	0709	3.44	0735	3.13	0811	3.32
TH 1248	1.05	FR 1819	3.94	SU 1302	1.02	MO 1316	0.72	TU 1306	1.08	WE 1407	0.76
1909	3.77			1945	3.96	1945	4.39	2000	3.98	2031	4.42
9 0113	1.24	24 0031	1.09	9 0200	1.21	24 0214	0.87	9 0223	1.14	24 0259	0.71
0709	3.76	0630	3.89	0752	3.34	0807	3.43	0815	3.18	0859	3.42
FR 1319	0.98	SA 1255	0.64	MO 1335	0.97	TU 1409	0.68	WE 1347	0.99	TH 1456	0.67
1943	3.91	1910	4.23	2018	4.04	2035	4.51	2035	4.07	2116	4.47
10 0148	1.16	25 0128	0.90	10 0238	1.14	25 0305	0.75	10 0301	1.04	25 0342	0.64
0744	3.72	0723	3.85	0830	3.30	0901	3.42	0853	3.23	0942	3.48
SA 1347	0.92	SU 1341	0.53	TU 1407	0.95	WE 1500	0.67	TH 1429	0.91	FR 1540	0.64
2014	4.02	1958	4.46	2051	4.09	2124	4.55	2111	4.14	2158	4.45
11 0223	1.11	26 0220	0.76	11 0314	1.11	26 0354	0.70	11 0339	0.96	26 0421	0.65
0816	3.65	0814	3.77	0905	3.26	0952	3.41	0930	3.28	1022	3.50
SU 1414	0.89	MO 1425	0.51	WE 1440	0.95	TH 1548	0.71	FR 1509	0.84	SA 1618	0.69
2043	4.09	2045	4.60	2124	4.10	2212	4.50	2146	4.20	2235	4.34
12 0256	1.08	27 0311	0.69	12 0350	1.10	27 0441	0.73	12 0416	0.89	27 0457	0.71
0848	3.56	0905	3.65	0940	3.22	1040	3.38	1006	3.34	1100	3.48
MO 1439	0.89	TU 1510	0.56	TH 1514	0.96	FR 1634	0.82	SA 1550	0.80	SU 1654	0.83
2111	4.12	2132	4.64	2158	4.08	2259	4.39	2223	4.22	2311	4.17
13 0328	1.10	28 0400	0.71	13 0428	1.12	28 0525	0.82	13 0455	0.85	28 0530	0.83
0920	3.44	0957	3.52	1015	3.18	1127	3.32	1045	3.39	1137	3.42
TU 1504	0.93	WE 1555	0.70	FR 1549	1.00	SA 1717	0.98	SU 1631	0.81	MO 1727	1.03
2141	4.10	2221	4.57	2234	4.05	2343	4.21	2300	4.20	2343	3.95
14 0401	1.15	29 0451	0.80	14 0507	1.14	29 0607	0.96	14 0533	0.85	29 0601	0.97
0950	3.31	1049	3.36	1053	3.16	1212	3.24	1126	3.41	1212	3.34
WE 1530	1.00	TH 1642	0.90	SA 1628	1.06	SU 1800	1.18	MO 1713	0.89	TU 1758	1.27
2211	4.03	2313	4.40	2314	4.00			2340	4.12		
15 0435	1.24	30 0542	0.96	15 0549	1.18	30 0026	3.99	15 0614	0.88	30 0015	3.70
1021	3.18	1143	3.21	1136	3.14	0648	1.10	1211	3.42	0630	1.11
TH 1558	1.10	FR 1730	1.14	SU 1711	1.16	MO 1257	3.17	TU 1756	1.04	WE 1249	3.24
2245	3.94			2358	3.94	1842	1.41			1833	1.53
		31 0005	4.19					31 0048	3.41		
		0635	1.13					0701	1.26		
		SA 1238	3.08					TH 1334	3.15		
		1825	1.38					1925	1.78		
										31 0133	2.64
										0726	1.65
										SU 1451	3.03
										2157	1.96

© Copyright Commonwealth of Australia 2024, Bureau of Meteorology

Datum of Predictions is Lowest Astronomical Tide

Times are in local standard time (Time Zone UTC +10:00)

Moon Phase Symbols

● New Moon

◐ First Quarter

○ Full Moon

◑ Last Quarter

Key Contacts

Marina office: 07 4976 1399

Marina Superintendent: 07 4976 1398 M: 0403 001 482

Emergency: 000

Maritime Safety Queensland (MSQ): 07 4971 5201

Vessel Traffic Service (VTS) Harbour Control: 07 4971 5208

Compleat Angler (recreational fuel): 07 4972 7283

Bailey's Marine Fuels (commercial fuel): 0437 666 021

Gladstone Machinery Maintenance (mechanics): 07 4972 5421

Gladstone Marine Centre (chandlery and boat yard): 07 4972 7111

Security: 07 4976 1213

Port City Fabrications (Slipway): 07 4903 1913

General Disclaimer

Gladstone Ports Corporation ("GPC") does not warrant, guarantee or make any representation about the accuracy or adequacy of any information or data made available at any time. No Party is entitled to any claim arising out of or in connection with the inaccuracy, incompleteness or inadequacy of, or the reliance by such Party on any information supplied by GPC. GPC encourages any Party to conduct their own research to confirm that the data is current and accurate.





Gladstone 
marina

gladstonemarina.com.au

Proudly operated by
**Gladstone Ports
Corporation**