

FACT SHEET

Wharf Specifications

Auckland Point Berth 4

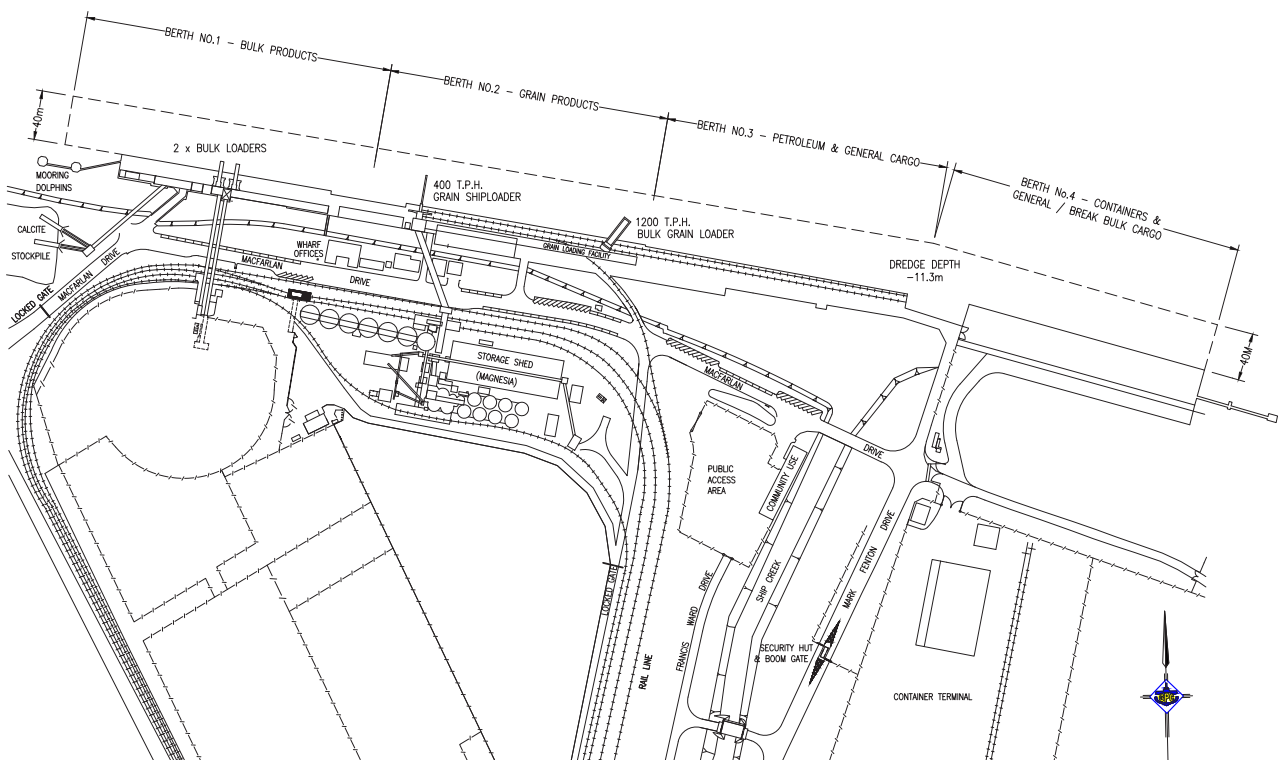
Port Central

Port of Gladstone

PRECINT INFORMATION

The Port of Gladstone is a natural deep-water harbour located 525 kilometres north of Brisbane and is just south of the Tropic of Capricorn at Latitude of 23°49.61'S, Longitude 151°34.6'E.

Owned by	Gladstone Ports Corporation
Operated by	Multi-User
Type of Facility	Multi-user wharf designed to handle containerised, breakbulk and general cargoes and heavy lift
Access	By road and rail
Working Hours	24/7
Location	Berth 4 is located at the Port Central Precinct before entrance to Auckland Inlet and adjacent to Auckland Hill, 32km from the Fairway Buoy.



WHARF DIMENSIONS

Wharf Length	220m
Wharf Deck	Reinforced concrete supported on steel piles
Maximum deck load	5 tonnes per square meter
Design vessel size	70,000 DWT (max), Panamax Class Bulk Carrier and Container Class 10,000DWT (min)
Maximum vessel length	255m LOA
Maximum Berthing displacement	85,000 Tonnes (max)

BERTH DIMENSIONS

Berth Pocket Width	40m
Berth Pocket Length	300m
Berth Pocket Depth	11.4m (Design), 12.6m declared*
Under Keel Clearance	0.5m
Berth Approach	11.5m (Design), 11.9m declared*
Berthing Manoeuvres	Vessel berth either port or starboard side to, depending on tide and vessel configuration
Berthing Velocity	Berthing velocity = 0.15m/s with impact at quarter point (0.30m/s for vessels up to 20,000DWT)
Berthing angle	10 degrees to wharf face, maximum loaded ship displacement 85,000 tonnes
Bollard capacity	100 tonne
Distance between fenders	12m centre to centre
Fender Face	1.8m wide x 5m high (9m2)

*Refer to MSQ Notice to Mariners 111 (T) of 2023.

SWING BASIN

Depth	11.3m
Diameter	440m
Location	16.7nm to Fairway Buoy

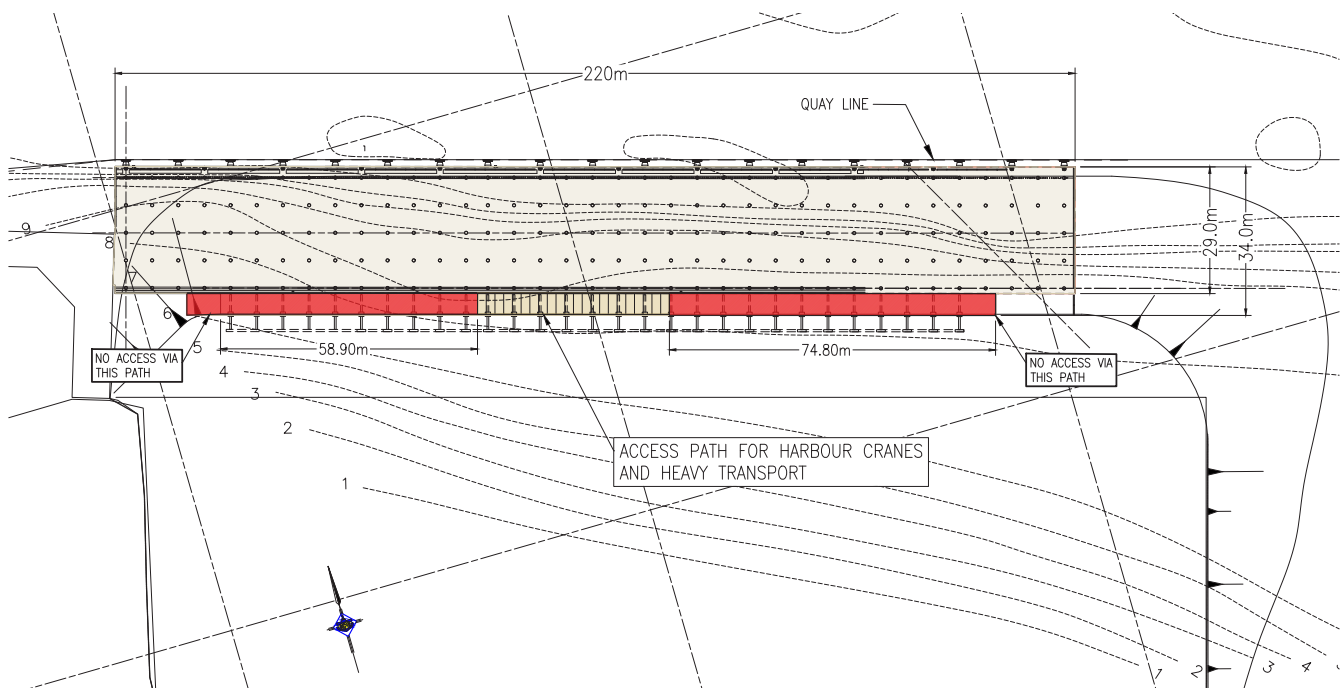
BERTH SERVICES

Shore Power	No
Water	Potable
Fuel	Bunkering vessel or Truck

DECK LOAD CAPACITY

Uniformly Distributed Loads	Wharf deck uniformly distributed load (UDL) of 50kPa Relieving slab (UDL) of 20kPa to 15m landward. Heavy transport access path relieving slabs to 50kPa UDL.
Straddle carriers	12.5t maximum wheel load
Heavy Lift vehicle	Mega lift truck equivalent load 38kPa
Mobile crane	50t mobile crane outrigger load to 45 tonnes at 5 metres c/c
Wharf Crane	40 tonnes wheel load, 6 wheel per corner
Mobile Harbour Crane	Crane pads manufactured to suit 50kPa deck loading
Vehicle loading	Semi-trailer T44 to AUSTROADS 1992, B-Double Truck

*Subject to an approved Permit to Lift application.



LAYDOWN

Size	24,000m ² total including roadways, 15,000 m ² of usable laydown (excludes wharf deck area).
Hardstand	Fully bitumen sealed
Security and access	Lockable and under CCTV surveillance Main gate electronic access control
Port Access Road	Envelope – 6.9m wide x 5.1m high*
Alternate Access (via approval and restrictions apply)	Envelope – 7m wide x 7m high*
Rail Access	Rail siding

*Subject to OSOM transport assessment.

