



Gladstone Ports Corporation

Growth, prosperity, community.

Environmental Management

2020-2022



We acknowledge that we are on the original lands of the First Nations people Bailai, Gurang, Gooreng Gooreng, Tariabelang Bunda, Darumbal, Kabi Kabi and Butchulla whose land we all share, live, work and play on.

We acknowledge and pay our respects to all Elders of past, who have made the many sacrifices, contributions and paved the way for us all to be here today. We acknowledge our future and emerging Leaders who will continue the fight for a better and united Australia for our generations of today, tomorrow and in the future.



Environment Superintendent Message

01 July 2020 to 30 June 2022

GPC actively aims to continuously reduce our environmental risk profile, using a combination of intelligence sources including new information and technology to help us improve the way we operate.

We are resolute in making a difference, operating under the principal that we will sustain our environments and support and enhance the communities in which we operate.

The Environment Team's purpose is to provide services that support and enhance the effective, efficient, environmentally responsible and future-focussed operations of our ports.

By achieving this, we are contributing to GPC's vision of being Australia's premier multi-commodity port.

Over the past two financial years, 2021 and 2022, we have achieved some fantastic results, such as a declining trend in environmental incidents. We recorded 17 environmental complaints in the 2021 financial year, mostly as the result of a significant influx of flying foxes in our parklands that caused community angst. However, we then recorded zero environmental complaints in the 2022 financial year. We continue to achieve certification of the ISO14001:2015 Environmental Management System and this is an achievement we strive to maintain and continuously improve.

Recent highlights, over the 2021 and 2022 financial years, include the responsible management of the flying fox influx at some of our parklands, demonstrating our commitment to working with nature in a safe and sensible manner. We also commenced a hard-hat recycling initiative, further enhancing education to support GPC's Waste Strategy, which demonstrates GPC's resolve to enhancing and positively contributing to the environment. Other notable achievements throughout this two-year period include significant school engagement, making the pledge for Gladstone Marina to be plastic free by 2025, Gladstone Marina officially being declared as Fish Friendly by the Marina Industries Association, the peak representative body for marinas, and signing a Memorandum of Understanding with CQUniversity to work together in becoming world leaders in Port research and operations.



GPC also reviewed and updated its Sustainability Strategy, resulting in the development of GPC's Climate Change and Adaptation Strategy positioning GPC to be ready for the Climate challenges that may lay ahead and in 2021, we commenced the establishment of the Significant Environmental Risk program which will provide a deliberate shift of focus towards culture, compliance and accountability for risk management.

Relationships and Partnerships

Partnering with our stakeholders to research and educate is always a top priority as we are looking to fortify our legacy as stewards of our ports.

GPC has relationships and works closely with a number of organisations and stakeholders on our environmental management activities, projects and initiatives. These include federal, state and local government and regulatory agencies, Ports Australia, Queensland Ports Association, Port Curtis Integrated Monitoring Program, Gladstone Healthy Harbour Partnership and other Regional Report Card Partnerships, Local Marine Advisory Committees, Traditional Owners, conservation councils, universities and other research institutions, port users and customers, community groups, natural resource management groups, and various consultants.

For more information on GPC's environmental management, visit gpcl.com.au/environment.

Crunching **the numbers** **2020-2022**

32 data requests

32 audits completed

214 environmental site inspections

0 environmental exceedances in FY21
1 environmental exceedance in FY22

17 environmental complaints in FY21
0 environmental complaints in FY22

4 Technical Advisory and Consultative Committee Meetings

>1,000 kg of rubbish collected at Clean Up events

32 governing regulations

41 school and community education engagements

>2,000 school children at school engagements

About **Gladstone Ports Corporation**

Gladstone Ports Corporation (GPC) is Australia's premier multi-commodity port and with our deep water port, land holdings and proximity to Asia we are positioning Queensland for a strong future. We are a Government Owned Corporation and the gateway for Australian trade, jobs and prosperity. With one in four jobs in regional Queensland reliant on trade we are focused firmly on creating prosperity for all. We manage and operate three port precincts — the Port of Gladstone, Port of Rockhampton and the Port of Bundaberg — and we have a 50-year vision for the future for these three key ports. In 2022, we took over the management of the Port of Maryborough.



Queensland

ROCKHAMPTON

GLADSTONE

BUNDABERG

MARYBOROUGH

OUR ENVIRONMENTAL VALUES



AIR



LAND



WATER



RESOURCES



BIODIVERSITY

GPC's Environmental Management System

GPC operates within an Environmental Management System (EMS), which provides the framework for how GPC identifies, manages and continually improves the environmental risks of its activities. *This brochure is a part of GPC's Environment Communications Plan, which in turn forms part of GPC's EMS. The EMS outlines the need to identify GPC's stakeholders and how consultation and communication with these stakeholders occurs.*

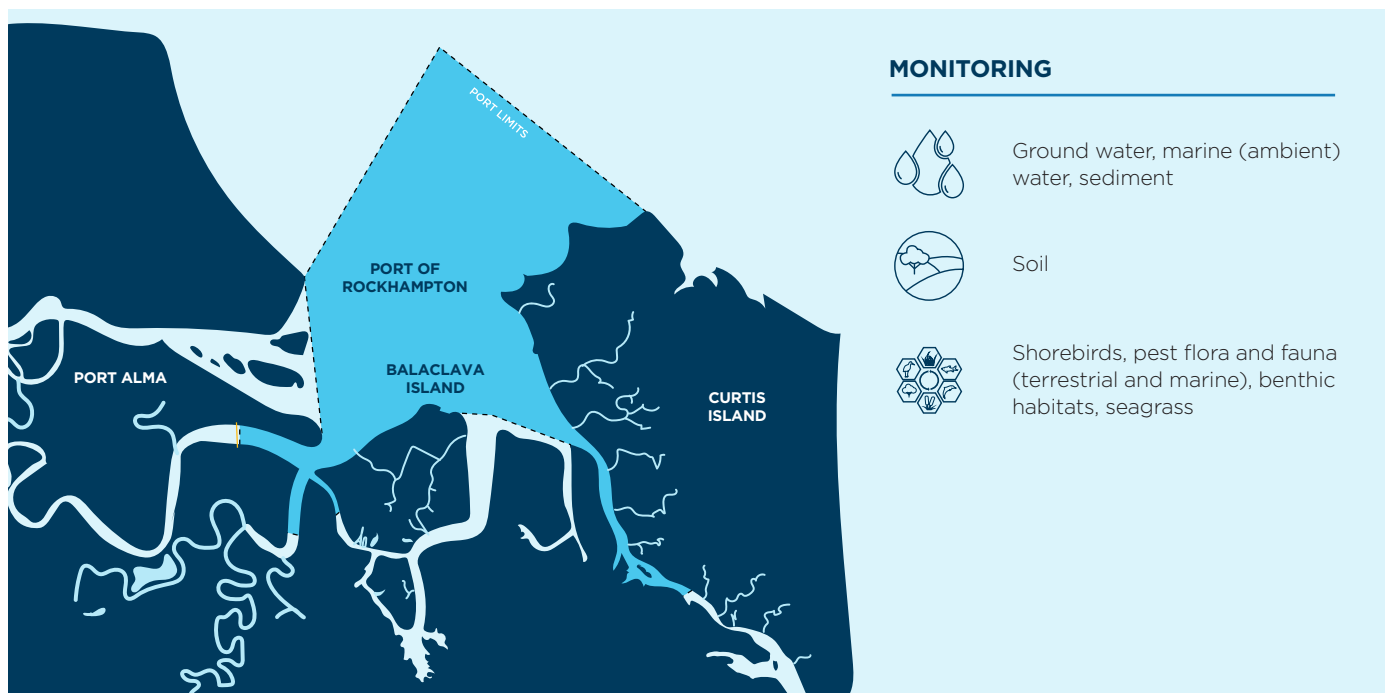


Port of Rockhampton

Port infrastructure – 25 km of shipping channel, three wharf facilities, one GPC operated terminal, 5,812 ha of land, industrial area and vacant land

Environment – Natural deep water port at the mouth of the Fitzroy River within the channels of Raglan and Casuarina Creeks

Key Environmental Aspects – Great Barrier Reef World Heritage Area, Great Barrier Reef Marine Park, Great Barrier Reef Coast Marine Park, Declared Fish Habitat Area, Fitzroy River Delta, conservation parks, net free fishing zone, Balaclava Island, intertidal wetlands, benthic habitats, dolphins, marine turtles, seagrass, shorebirds, recreational fishing



HIGHLIGHTS

- 2020-21 Fitzroy Partnership for River Health report card
- Sustainable Sediment Management Project – Stakeholder consultation and feasibility studies completed to identify robust, long-term solutions for the management of maintenance dredging sediment
- Seagrass meadows and Eastern Curlew found at Balaclava Island

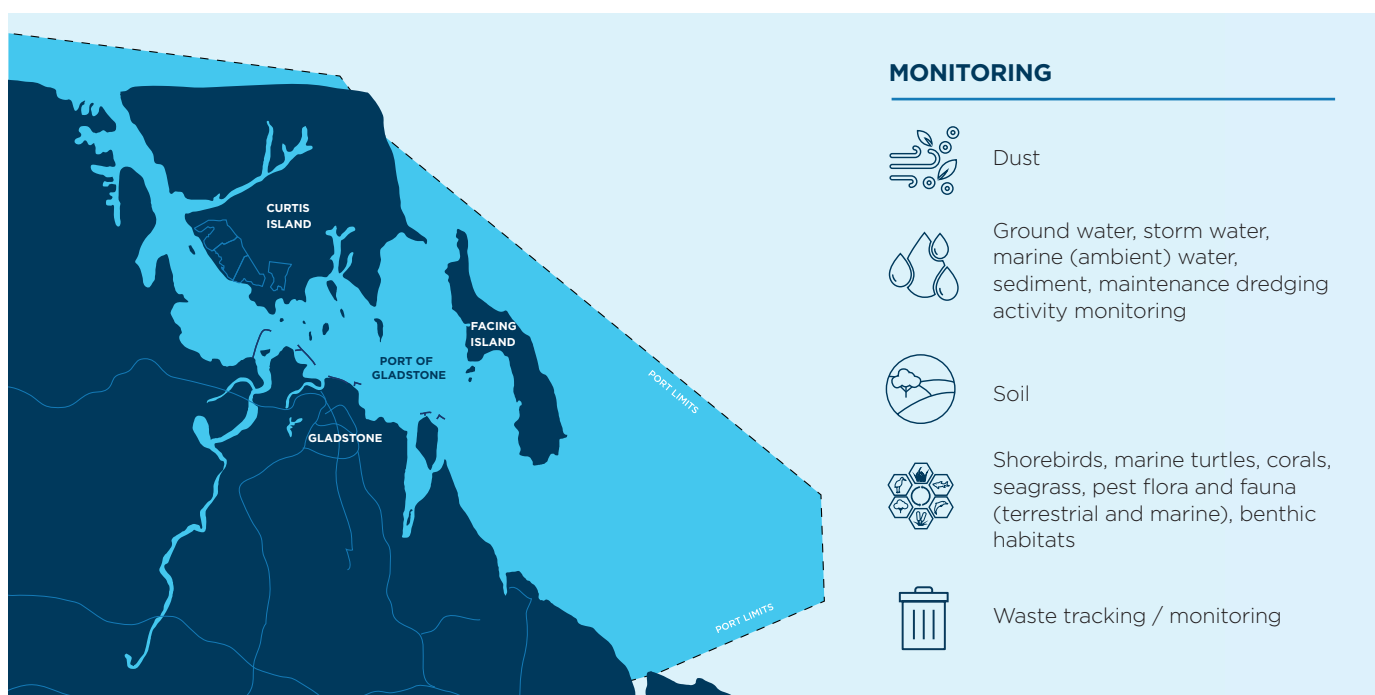


Port of Gladstone

Port infrastructure – 50 km of shipping channel, eight main wharf centres, 20 berths, three GPC operated terminals (RG Tanna Coal Terminal, Auckland Point and Barney Point), 4,448 ha of land, industrial area, Marina, parklands, boat ramps, quarries, reclamation areas, vacant / tenanted / conservation land holdings

Environment – Natural deep water port sheltered by continental islands and intertidal zones, which extend to the coastal environment

Key Environmental Aspects – Great Barrier Reef World Heritage Area, Great Barrier Reef Marine Park, Great Barrier Reef Coast Marine Park, Declared Fish Habitat Areas, Dugong Protection Area B, conservation parks, continental islands, Facing Island, significant ecological communities, semi-evergreen vine thicket, inshore reef communities, tidal wetlands, seagrass, benthic habitats, marine turtles, dugongs, dolphins, shorebirds, commercial and recreational fishing



HIGHLIGHTS

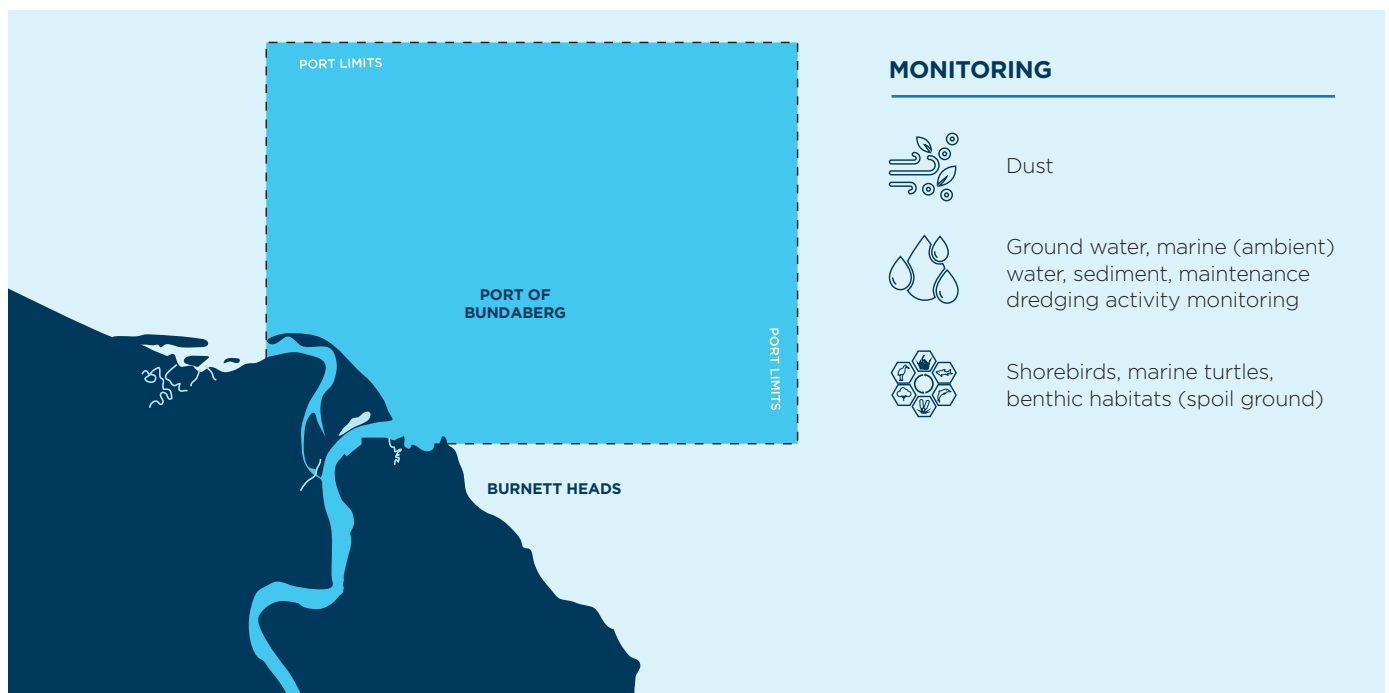
- 2020 and 2021 Gladstone Healthy Harbour Partnership Report Cards
- Fish Friendly Accreditation achieved by Gladstone Marina
- Seagrass remained in a good condition for the two year period
- Pest management on Facing Island, including wild dogs and pest weeds
- MoU with CQUniversity and secondment opportunity for GPC staff
- Management of flying foxes within the parklands
- EMS certification maintained
- Numerous STEM engagements
- Bilge rats handed out to Marina users
- Hard hat recycling commenced
- Commencement of planned burns to reduce bush fire risk
- Completion of Clinton Vessel Interaction project successfully
- Completion of Long term monitoring of health condition of foraging Green Turtles in Port Curtis
- Completion of long term Flatback nesting Turtle Monitoring on Curtis Island
- Completion of a decade of migratory shorebird Monitoring in Port Curtis and Port Alma
- 21 drain Buddies installed on GPC land to prevent stormwater pollutants from entering the Harbour
- Improved Stormwater management capability and treatment
- Two CQUniversity PhD Scholarships granted and projects commences
- Seawall project concept developed
- Sustainable Sediment Management Project feasibility studies progressing into approval stage for trials
- Fine Grained Sediment project commenced
- 2021 GHHP Stewardship Report

Port of Bundaberg

Port infrastructure – 11 km of shipping channel, two wharves, 507 ha land, Marina, Boat Harbour, Material Relocation Area, industrial / commercial area, parkland and vacant land

Environment – Mouth of Burnett River including Wallace Creek and intertidal zones which extends to coastal environments

Key Environmental Aspects – Mon Repos Conservation Park, Barubbra Island Conservation Park, Great Sandy Marine Park, conservation parks, threatened ecological communities, reef communities, intertidal wetlands, seagrass, benthic habitats, marine turtles, shorebirds, commercial and recreational fishing



HIGHLIGHTS

- Development of the Long-term Maintenance Dredging Management Plan
- Sustainable Sediment Management Project – Stakeholder consultation and feasibility studies completed to identify robust, long-term solutions for the management of maintenance dredging sediment
- Commenced a five-year funding arrangement with Burnett Mary Regional Group to provide habitat enhancement for shorebirds through the creation of artificial roosts
- Support for Mon Repos with more than 50 years of monitoring nesting loggerhead turtles
- Development of Land Use Plan



Port of Maryborough

Port infrastructure – There is no port infrastructure or facilities available for ships. It is a non-trading port with no import or export activities with minimal infrastructure designed for fishing, recreation and tourism activities

Environment – Situated between Fraser Island and mainland and encompasses the water way known as Great Sandy Strait. The area has large sheltered bays and vast beaches and extends from Woodgate in the north to Tin Can Bay Inlet in the south

Key Environmental Aspects – Great Sandy Marine Park, Great Sandy Strait, Declared Fish Habitat Areas, Important Marine Mammal Area (IMMA - dugongs, dolphins and Humpback whales), Dugong Protection Area, Whale Heritage Site, conservation parks, K'gari (Fraser Island) and other continental islands, significant ecological communities, semi-evergreen vine thicket, inshore reef communities, tidal wetlands, Ramsar wetlands, seagrass, benthic habitats, marine turtles, shorebirds, commercial fishing, recreational fishing and boating, barge operations, whale watching and scuba diving



HIGHLIGHTS

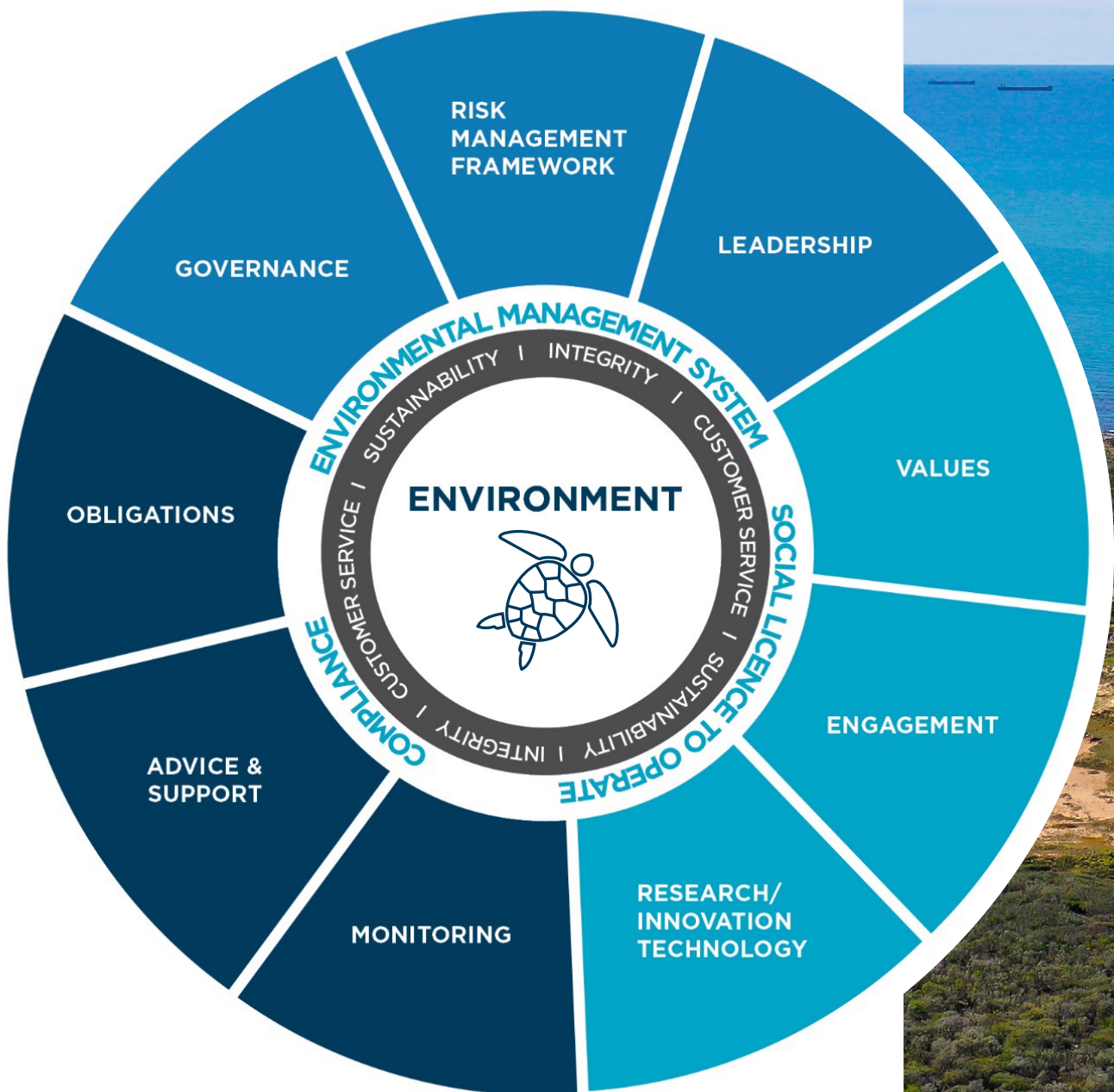
- On 1 March 2022, management of the Port of Maryborough was transferred to GPC, bringing benefits through geographic proximity of GPC's existing ports and aligning the port and maritime responsibilities with Maritime Safety Queensland. As a non-trading Port, GPC undertakes limited responsibilities associated with managing the Port of Maryborough.



Future direction

GPC's environmental future focus is to continue to strengthen and embed the Environmental Management System through:

- Leadership, risk management and governance;
- Compliance advice support and monitoring; and
- Social licence to operate with the promotion of GPC's values, and enhanced engagement, research and innovation.



An aerial photograph of a coastline. In the foreground, there is a sandy beach curving along the shore, bordered by green vegetation. The water is a vibrant turquoise color near the shore, transitioning to a deeper blue further out. Several large ships are visible on the horizon. The sky is a clear, bright blue with scattered white clouds.

GPC's environment team will continue to provide services which **support and enhance the effective, efficient and environmentally responsible and future focussed GPC.**

**Gladstone Ports
Corporation Limited**

40 Goonoon St / PO Box 259
Gladstone, QLD, 4680, Australia

Tel + 61 7 4976 1333
Fax + 61 7 4972 3045
www.gpcl.com.au

ACN 131 965 896
ABN 96 263 788 242



**Gladstone Ports
Corporation**

Growth, prosperity, community.