



**Gladstone Ports
Corporation**

Growth, prosperity, community.

Environmental Management

2022-2023



We acknowledge that we are on the original lands of the First Nations people Bailai, Gurang, Gooreng Gooreng, Tariabelang Bunda, Darumbal, Kabi Kabi and Butchulla whose land we all share, live, work and play on.

We acknowledge and pay our respects to all Elders of past, who have made the many sacrifices, contributions and paved the way for us all to be here today. We acknowledge our future and emerging Leaders who will continue the fight for a better and united Australia for our generations of today, tomorrow and in the future.

Environment Message

01 July 2022 to 30 June 2023

We are resolute in making a difference, working under the principal that we will care for our environments and support and enhance the communities in which we operate.

Gladstone Ports Corporation (GPC) is an organisation that intertwines daily operations with environmental responsibilities. This brochure reflects on GPC's collective efforts and progress to responsibly manage, develop and facilitate the prosperity of our Ports. This has been done by operating our port facilities and services in an economically, environmentally and socially sustainable manner. By achieving this, we are contributing to GPC's vision of being a world leading multi-commodity ports corporation.

In pursuit of our operational objectives, it is imperative that we acknowledge the potential impact that our activities may have on our environment and the measures we have in place to mitigate them. This brochure provides a snapshot of our environmental performance and stewardship throughout the 2022-23 financial year showcasing the challenges we have encountered, the strides we have made, and the path forward toward greater environmental sustainability.

We are encouraged to see the positive initiatives undertaken across our operations including the inclusion of electric vehicles in our fleet and a dedicated program to manage our six significant environmental risks of Land use, Wharf spillage, Dust, Stormwater, Work over Water, and Hydrocarbon Spills. An organisational redesign enhanced our Environment Social Governance (ESG) journey with the Environment Team becoming part of larger Safety & ESG Department. This change has seen the establishment of two dedicated ESG employees. The establishment of this team sees ESG and Environment as key drivers for the business.

Our role extends beyond mere compliance; it encompasses a proactive commitment to sustainable practices that go above and beyond regulatory requirements. As we strive for distinction in our operations, we must be mindful of the delicate balance between progress and environmental preservation.

The decisions we make today not only echo within the confines of our facilities but reverberate throughout the broader ecosystems and communities that sustain us.

A significant highlight throughout the 2022-23 financial year has been the signing of a second Memorandum of Understanding (MoU) with Central Queensland University (CQUniversity) to work together in building regional capacity through education, training and research. This MoU involves seven key focus areas with the Environment Team committed to one of these themes through identifying research opportunities with the university's Coastal Marine Ecosystems Research Centre.

In November 2022, we celebrated 20 years of seagrass monitoring in the Port of Gladstone showcasing a successful collaboration with the same researchers over that time. We continue to achieve and maintain certification of the ISO14001:2015 Environmental Management System and this is an achievement we strive to maintain and continuously improve.

Relationships and Partnerships

Partnering with our stakeholders to research and educate is always a top priority as we are looking to fortify our legacy as stewards of our ports.

GPC has relationships and works closely with a number of organisations and stakeholders on our environmental management activities, projects and initiatives.

These include federal, state and local government and regulatory agencies, Ports Australia, Queensland Ports Association, Port Curtis Integrated Monitoring Program, Gladstone Healthy Harbour Partnership and other Regional Report Card Partnerships, Local Marine Advisory Committees, Traditional Owners, conservation councils, universities and other research institutions, port users and customers, community groups, natural resource management groups, and various consultants.

Crunching the numbers 2022-2023



13 data requests

21 audits completed

155 environmental site inspections

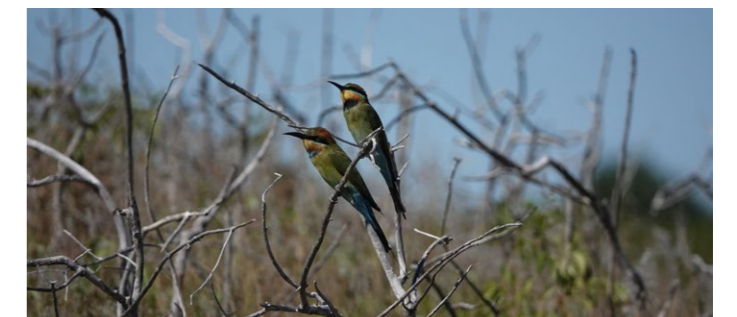
1 environmental exceedance in FY23
3 environmental complaints in FY23

> 500 kg of rubbish collected at Clean Up events

1 Technical Advisory and Consultative Committee Meeting

15 school education engagements

> 600 school children at school engagements



For more information on GPC's environmental management, visit gpcl.com.au/environment.

About Gladstone Ports Corporation

Gladstone Ports Corporation (GPC) is a world leading multi-commodity ports corporation —with our naturally protected ports, land holdings and proximity to Asia we are positioning Queensland for a strong future. We are a Government Owned Corporation and the gateway for Australian trade, jobs and prosperity. With one in four jobs in regional Queensland reliant on trade we are focused firmly on creating prosperity for all. We manage and operate three port precincts — the Port of Gladstone, Port of Rockhampton and the Port of Bundaberg — and we have a 50-year vision for the future for these three key ports. In 2022, we took over the management of the Port of Maryborough.

GPC operates within an Environmental Management System (EMS), which provides the framework for how GPC identifies, manages and continually improves the environmental risks of its activities. This brochure is a part of GPC's Environment Communications Plan, which in turn forms part of GPC's EMS. The EMS outlines the need to identify GPC's stakeholders and how consultation and communication with these stakeholders occurs.

Queensland

- ROCKHAMPTON
- GLADSTONE
- BUNDABERG
- MARYBOROUGH

OUR ENVIRONMENTAL VALUES



AIR



LAND



WATER



RESOURCES



BIODIVERSITY

GPC's Environmental Management System

GPC operates within an Environmental Management System (EMS), which provides the framework for how GPC identifies, manages and continually improves the environmental risks of its activities. *This brochure is a part of GPC's Environment Communications Plan, which in turn forms part of GPC's EMS. The EMS outlines the need to identify GPC's stakeholders and how consultation and communication with these stakeholders occurs.*

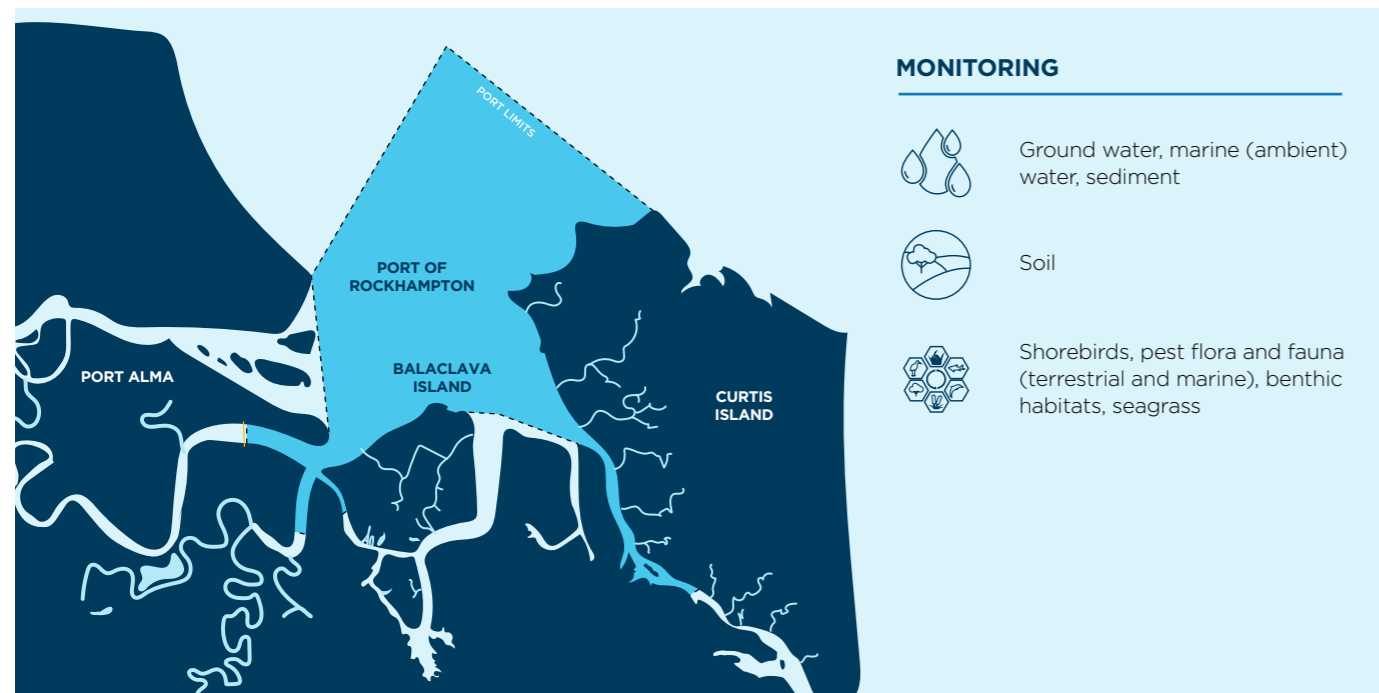


Port of Rockhampton

Port infrastructure – 25 km of shipping channel, three wharf facilities, one GPC operated terminal, 5,812 ha of land, industrial area and vacant land

Environment – Natural protected port at the mouth of the Fitzroy River within the channels of Raglan and Casuarina Creeks

Key Environmental Aspects – Great Barrier Reef World Heritage Area, Great Barrier Reef Marine Park, Great Barrier Reef Coast Marine Park, Declared Fish Habitat Area, Fitzroy River Delta, conservation parks, net free fishing zone, Balaclava Island, intertidal wetlands, benthic habitats, dolphins, marine turtles, shorebirds, recreational fishing



HIGHLIGHTS

- 2021-22 Fitzroy Partnership for River Health Report Card
- Multi-agency emergency response exercise undertaken in preparation should there be an oil spill

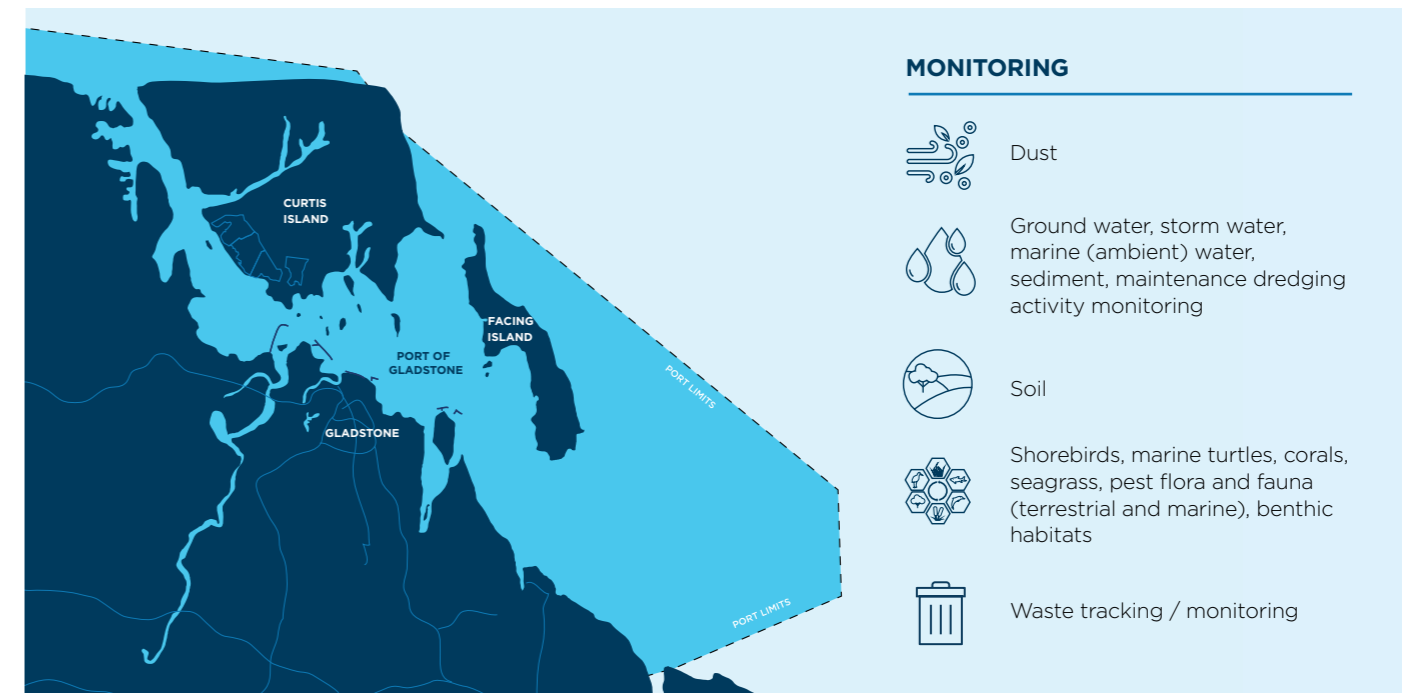


Port of Gladstone

Port infrastructure – 50 km of shipping channel, eight main wharf centres, 20 berths, three GPC operated terminals (RG Tanna Coal Terminal, Auckland Point and Barney Point), 4,448 ha of land, industrial area, Marina, parklands, boat ramps, quarries, reclamation areas, vacant / tenanted / conservation land holdings

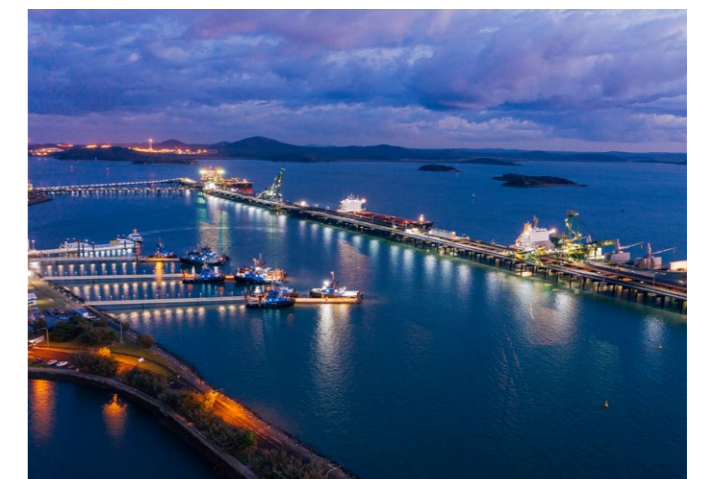
Environment – Natural protected port sheltered by continental islands and intertidal zones, which extend to the coastal environment

Key Environmental Aspects – Great Barrier Reef World Heritage Area, Great Barrier Reef Marine Park, Great Barrier Reef Coast Marine Park, Declared Fish Habitat Areas, Dugong Protection Area B, conservation parks, continental islands, Facing Island, significant ecological communities, semi-evergreen vine thicket, inshore reef communities, tidal wetlands, seagrass, benthic habitats, marine turtles, dugongs, dolphins, shorebirds, commercial and recreational fishing



HIGHLIGHTS

- 2022 Gladstone Healthy Harbour Partnership Report Card
- 2022 GHHP Stewardship report
- 20 years of seagrass monitoring
- Numerous STEM engagements
- PPE Glove recycling commenced
- First official nesting turtle census on Facing Island
- Environmental surveys commenced on Facing Island
- 5-yearly reef surveys undertaken
- Dust improvement initiatives progressing
- Electric vehicle trials commenced
- Feral pig management program commenced on GPC land

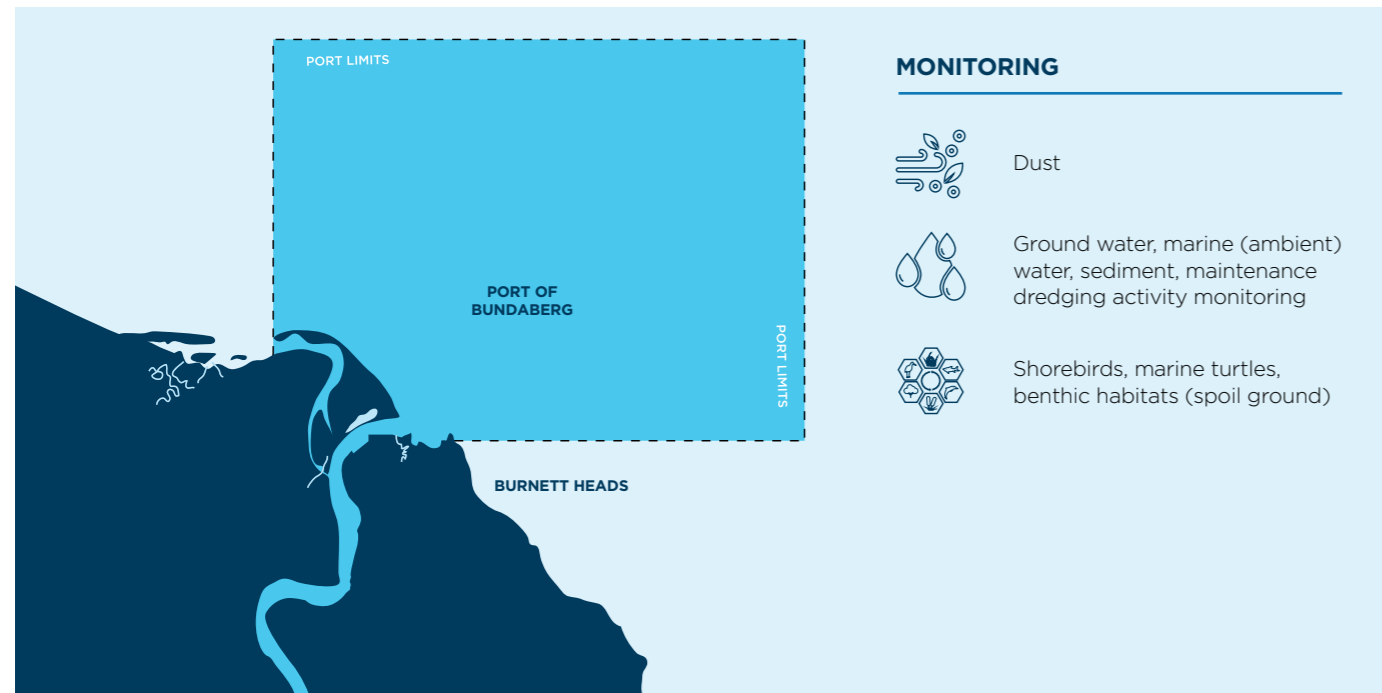


Port of Bundaberg

Port infrastructure – 11 km of shipping channel, two wharves, 507 ha land, Marina, Boat Harbour, Material Relocation Area, industrial / commercial area, parkland and vacant land

Environment – Mouth of Burnett River including Wallace Creek and intertidal zones which extends to coastal environments

Key Environmental Aspects – Mon Repos Conservation Park, Barubbra Island Conservation Park, Great Sandy Marine Park, conservation parks, threatened ecological communities, reef communities, intertidal wetlands, seagrass, benthic habitats, marine turtles, shorebirds, commercial and recreational fishing



HIGHLIGHTS

- Support for Mon Repos with more than 50 years of monitoring nesting loggerhead turtles
- 3-year partnership for Oceanfest commenced
- Electric vehicle charging station installed

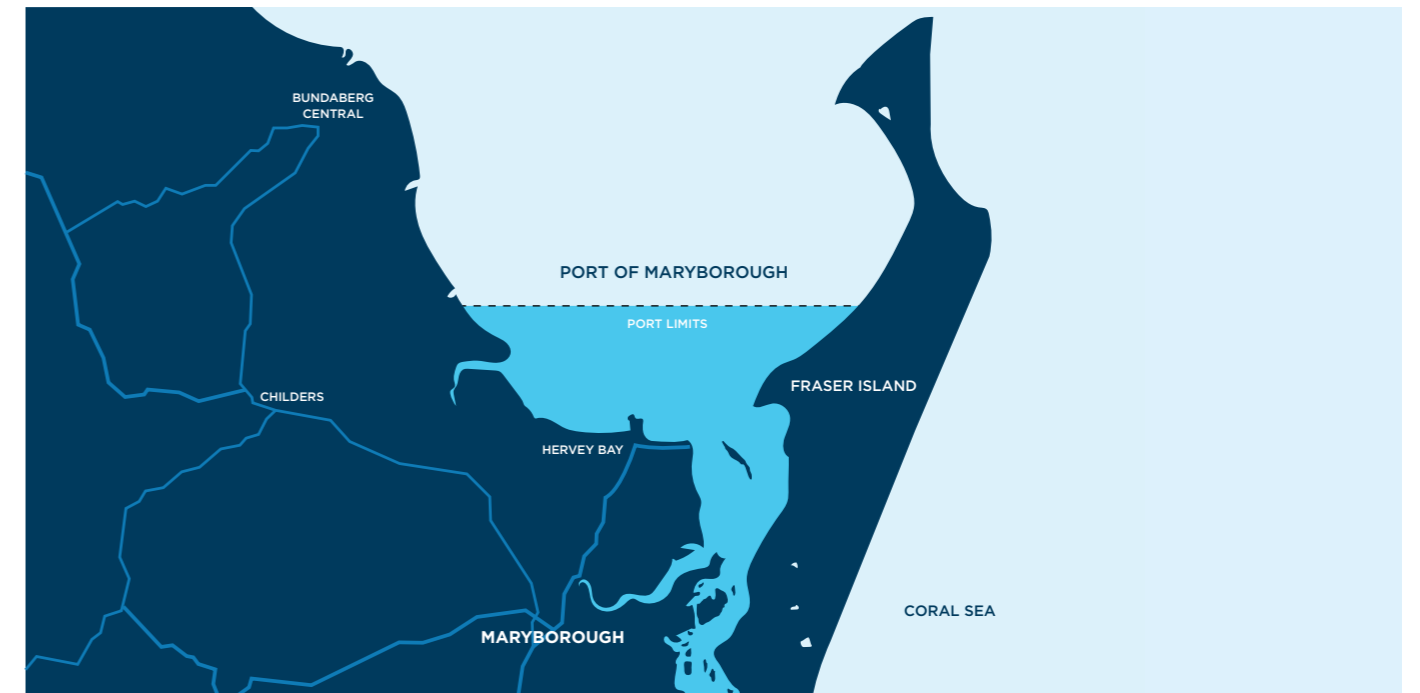


Port of Maryborough

Port infrastructure – There is no port infrastructure or facilities available for ships. It is a non-trading port with no import or export activities with infrastructure kept to a minimum and designed for fishing, recreation and tourism activities.

Environment – Situated between Fraser Island and mainland and encompasses the water way known as Great Sandy Strait. The area has large sheltered bays and vast beaches and extends from Woodgate in the north to Tin Can Bay Inlet in the south.

Key Environmental Aspects – Great Sandy Marine Park, Great Sandy Strait, Declared Fish Habitat Areas, Important Marine Mammal Area (IMMA - dugongs, dolphins and Humpback whales), Dugong Protection Area, Whale Heritage Site, conservation parks, K'gari (Fraser Island) and other continental islands, significant ecological communities, semi-evergreen vine thicket, inshore reef communities, tidal wetlands, Ramsar wetlands, seagrass, benthic habitats, marine turtles, shorebirds, commercial fishing, recreational fishing and boating, barge operations, whale watching and scuba diving.



HIGHLIGHTS

- On 1 March 2022, management of the Port of Maryborough was transferred to GPC, bringing benefits through geographic proximity of GPC's existing ports and aligning the port and maritime responsibilities with Maritime Safety Queensland. As a non-trading Port, GPC undertakes limited responsibilities associated with managing the Port of Maryborough.



Future direction

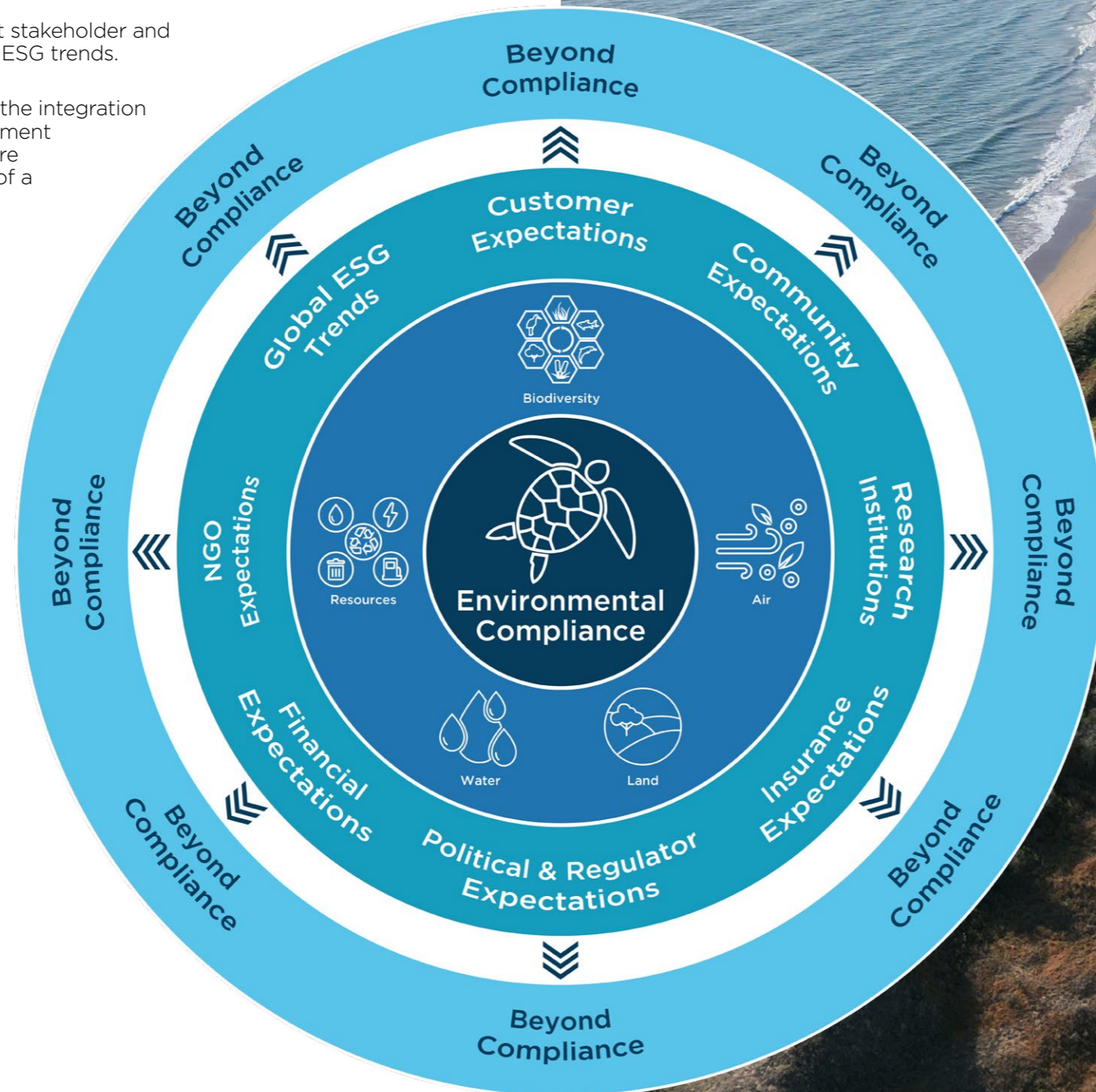
In charting our course beyond environmental compliance, it is important to embrace innovative strategies and collaborative efforts. GPC's environmental effort will continue to concentrate on the strengthening and embedding of the EMS through our three core pillars of:

1. Leadership, risk management and governance;
2. Compliance advice support and monitoring; and
3. Social licence to operate with the promotion of GPC's values, and enhanced engagement, research and innovation.

This will include alignment with relevant stakeholder and business expectations as well as global ESG trends.

The organisational redesign empowers the integration of the Safety and Environment Management Systems, with the department's structure reflective of that, under the leadership of a Safety and Environment Manager.

In the next reporting period, we will continue to incorporate ESG into our practices, develop a Biodiversity and Climate Resilience program, further progress the MoU with CQUniversity and implement the significant environmental risk program to improve our understanding of such risks. We will also continue to strengthen the protection of our key environmental values — Air, Biodiversity, Land, Resources, and Water. As we navigate the challenges ahead, we look forward to progressing towards a sustainable and environmentally conscious future - for generations to come.



GPC's environment team will continue to provide services which **support and enhance the effective, efficient and environmentally responsible and future focussed GPC.**



**Gladstone Ports
Corporation Limited**

40 Goonoon St / PO Box 259
Gladstone, QLD, 4680, Australia

Tel + 61 7 4976 1333
Fax + 61 7 4972 3045
www.gpcl.com.au

ACN 131 965 896
ABN 96 263 788 242



**Gladstone Ports
Corporation**

Growth, prosperity, community.