



**Gladstone Ports  
Corporation**

Growth, prosperity, community.

# Sustainable Port Management Snapshot

FINANCIAL YEAR 2024 (1 JULY 2023 - 30 JUNE 2024)



We acknowledge that we are on the original lands of the First Nations people Bailai, Gurang, Gooreng Gooreng, Taribelang Bunda, Darumbal, Kabi Kabi and Butchulla whose land we all share, live, work and play on.

We acknowledge and pay our respects to all Elders of past, who have made the many sacrifices, contributions and paved the way for us all to be here today. We acknowledge our future and emerging Leaders who will continue the fight for a better and united Australia for our generations of today, tomorrow and in the future.

# MESSAGE FROM THE EGM Safety & ESG

As we stand at the crossroads of environmental, social and economic challenges, the importance of sustainability has never been more evident.



Gladstone Ports Corporation's (GPC's) commitment to facilitate and deliver sustainable trade and prosperity is a fundamental aspect of who we are and what we strive to achieve. This snapshot focuses on our strategic priority for Sustainable Port Management serves as a testament to our ongoing efforts, accomplishments, and aspirations in contributing to a more sustainable future for our port operations and development.



We recognise that our sustainability journey, including decarbonisation, is ongoing and that there is always more to be done. As we continue to evolve and adapt to new challenges and opportunities, we remain committed to transparency, continuous improvement and stakeholder engagement.

I would like to express my thanks to our employees, partners, customers, communities and stakeholders for their ongoing support and collaboration. Together, we can make a difference and build a more sustainable, equitable, and prosperous Queensland for future generations.

## DISCLAIMER

While GPC has made reasonable efforts to ensure that information and materials provided in this document are free from error, this document is published for information only and is not to be relied upon by any person other than GPC and its employees, contractors and authorised representatives. GPC provides no warranty as to the accuracy, adequacy or completeness of any information provided, or as to the suitability of any information contained in the document for any purpose. The information is intended as general information only and to be current at the date of this Snapshot's publication. GPC will not be liable to any third party using or relying on any information contained in this document for any purpose.



# Our Ports



Queensland



ROCKHAMPTON



GLADSTONE



BUNDABERG



MARYBOROUGH

## PORT OF ROCKHAMPTON



- 25 km of shipping channel
- 3 wharf facilities, including 1 GPC operated terminal
- 5,812 ha of land
- Main Trades: Explosives, Ammonium Nitrate, Tallow & Fuels, and other general cargo
- 2023/2024 Trade Statistics:



**Vessel Visits:**  
81



**Import/Export Volume:**  
248,478 tonnes



**Imports from:**  
19 countries



**Exports to:**  
10 countries



### MONITORING



Ground water, marine (ambient) water, sediment



Soil



Shorebirds, pest flora and fauna (terrestrial and marine), benthic habitats, seagrass

## PORT OF GLADSTONE



- 50 km of shipping channel
- 8 main wharf centres, 20 berths, 3 GPC operated terminals
- 320 berth 5 Gold Anchor Marina
- 4,448 ha of land
- Main Trades: Coal, LNG, Aluminium (incl. Alumina and Bauxite), Cement and Petroleum Products
- 2023/2024 Trade Statistics:



**Vessel Visits:**  
1,819



**Import/Export Volume:**  
118,334,616 tonnes



**Imports from:**  
18 countries



**Exports to:**  
40 countries



### MONITORING



Dust



Ground water, storm water, marine (ambient) water, sediment, maintenance dredging activity monitoring



Soil

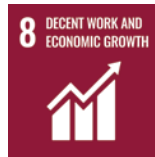


Shorebirds, marine turtles, corals, seagrass, pest flora and fauna (terrestrial and marine), benthic habitats



Waste tracking / monitoring

## PORT OF BUNDABERG



- 11 km of shipping channel
- 2 wharves, Marina and Boat Harbour not operated by GPC
- 205 ha of land
- Main Trades: Sugar, Molasses, Wood Pellets, Gypsum, Silica Sand
- 2023/2024 Trade Statistics:



**Vessel Visits:**

16



**Import/Export Volume:**

332,059 tonnes



**Imports from:**

2 countries



**Exports to:**

4 countries



### MONITORING



Dust



Ground water, marine (ambient) water, sediment, maintenance dredging activity monitoring



Shorebirds, marine turtles, benthic habitats (material relocation area)

## PORT OF MARYBOROUGH



- Between K'gari (Fraser Island) and the mainland, including the Great Sandy Strait
- Non-trading port with no port infrastructure or facilities
- Minimal infrastructure for fishing, recreation and tourism
- GPC maintains emergency management responsibilities



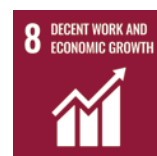


# Case Studies

## 110 Years of GPC

GPC commemorated a significant milestone in its history - marking 110 years of operations in 2024. This milestone solidifies our standing as one of Australia's foremost ports, underscoring its pivotal role in both the Queensland and national economies. The supercentenarian birthday was official on March 6 – 110 years since the Gladstone Harbour Board first met in 1914 at the Gladstone Town Hall. One of the very first trade opportunities still stands today at Auckland Point thanks to a deal with the British Imperial Oil Company (now known as Shell) erecting tanks for petroleum storage in 1929. That was just the beginning for GPC. By 1930 more than 58,000 tonnes of coal was exported to the world.

Fast forward to 2024: GPC operates the world's fourth largest coal exporting terminal and handles more than 34 products including LNG, aluminium, petroleum and containers.



## Facing Island

Facing Island covers approximately 2480 ha and is located within the boundaries of the Port of Gladstone and the Great Barrier Reef World Heritage Area. In 1981 the Gladstone Port Authority became trustee over the majority of the island and since then GPC have been responsible for managing this land. The island provides natural protection of our shipping channel, holds environmental and indigenous and European cultural heritage.

One environmental survey were conducted in 2023, which found about 169 different animals were recorded including 100 different types of birds, nine amphibians, seven mammals, 15 microbats and 16 reptiles. The survey results also recorded more than 298 plant species.

These environmental surveys are an important step in helping GPC to protect the island's unique flora and fauna species and to guide management decisions.

GPC also supports biannual clean ups of the beaches on Facing Island with 76 bags of rubbish collected weighing over 408 kg during two events in October 2023 and April 2024. Marine debris is an environmental issue that can cause harm to native fauna and the natural beauty of our beaches. During the financial year GPC also supported the first turtle nesting and hatching census on Facing Island.



## Climate Resilience Projects

GPC have three projects that are focussed on Biodiversity improvements and/or Resilience to Climate change:

### Capricorn Yellow Chat (commenced FY23/24)

The focus of this project is to help implement the Recovery Action Plan for this small bird, that has been reduced to an estimated population of 200-300 individuals. An initial mapping exercise is underway to understand the current land uses across Capricorn Yellow Chat habitat in the Port of Rockhampton (Port Alma) region. In partnership with CQUniversity (CQU), GPC have also funded a significant research program that will look at population genetics, demographics and risks from factors like climate change, land uses and impact by introduced species.



Photo by Wayne Houston, CQUniversity



Photo by Rory Mulloy, CMERC, CQUniversity

### Seawall Habitat enhancement

Scaling up of a pilot project on GPC seawalls designed to increase the biodiversity along port infrastructure. The initial focus was to understand the best method to facilitate and establish mangrove and oyster habitats. We are now scaling up the pilot program to maximise the biodiversity around our Ports.

### Coal Restoration

A coral restoration project at Manning Reef and Seal Rocks Reef has been ongoing with coral transplants being attached to bedrock with cement and fumed silica mixture proving to be very strong. Survival is high at both reefs at 91.8% and 88.5% respectively over past 12 months. Macroalgal removal has been ongoing at both reefs.



Photo by BMT Commercial Australia Pty Ltd



## CQU Memorandum of Understanding (MoU) Partnership

GPC and CQU have entered a second MoU with this iteration being for five years and includes the establishment of working groups in areas of each business that could provide each other with mutual benefits, which are:

- Engagement with First Nations peoples
- ESG/Sustainability
- Coastal Marine Ecosystems Research Centre (CMERC)
- Workforce education and training
- Innovation and technology
- Future trade
- Decarbonisation





# Social



More than **\$330,000** in community funding through sponsorships & donations.

GPC supported multiple initiatives across Gladstone, Rockhampton and Bundaberg during the financial year ranging from assisting students to further their education to providing free activities through various not-for-profit groups for the benefit of our port communities.



## WORKFORCE PROFILE

**760**  
EMPLOYEES

169 women (21%)  
627 men (79%)



First Nations & Australian South Sea Islanders: **5.5 %**

Average age of employees: **45.7 years**

Average length of employment: **11 years 1 month**

## TALENT TODAY, TALENT TOMORROW

A cross-functional internal working group and a diverse external consultation group was established to assist in development of GPC's 4th Reconciliation Action Plan.



\$15,750 provided via student bursaries and scholarships in Gladstone, Bundaberg and Rockhampton.

First Nations Apprentices & Trainees across all offered disciplines:

6 trainees: **46%**

7 apprentices: **16%**



ILUA: Relationship committee reestablished and first meeting held with representatives from First Nations Bailai, Gurang, Gooreng Gooreng, Taribelang Bunda Peoples Aboriginal Corporation Registered Native Title Body Corporation (PBC). Commenced engaging with Darumbal to the north and Butchulla to the south.

## HEALTH & WELLBEING

As part of the Mental Health Strategy that was released in 2022, GPC's first Mental Health Coordinator commenced in October 2023 in conjunction with weekly visits from an on-site psychologist in September 2023.

### Other initiatives & Health promotions

- Annual flu vax clinics
- Support fundraising initiatives (e.g. DV Safe phone, Bleed 4 Brent, Beanie's for Braincancer, Breast Cancer McGrath foundation, RUOK Day, Movember)

**4** QUALITY EDUCATION



**5** GENDER EQUALITY



**8** DECENT WORK AND ECONOMIC GROWTH



**10** REDUCED INEQUALITIES



# Our Country

## CLIMATE CHANGE

GPC is committed to identifying, understanding and addressing potential climate change risks and opportunities to assist GPC to adapt for long-term prosperity. GPC aims at reducing greenhouse gas emissions in alignment with the requirements of our shareholders and relevant Queensland Treasury Guidelines.



2023/24 Total GHG Emissions:

79,616 t CO<sub>2eq</sub>

Scope 1:

29,088 t CO<sub>2eq</sub>

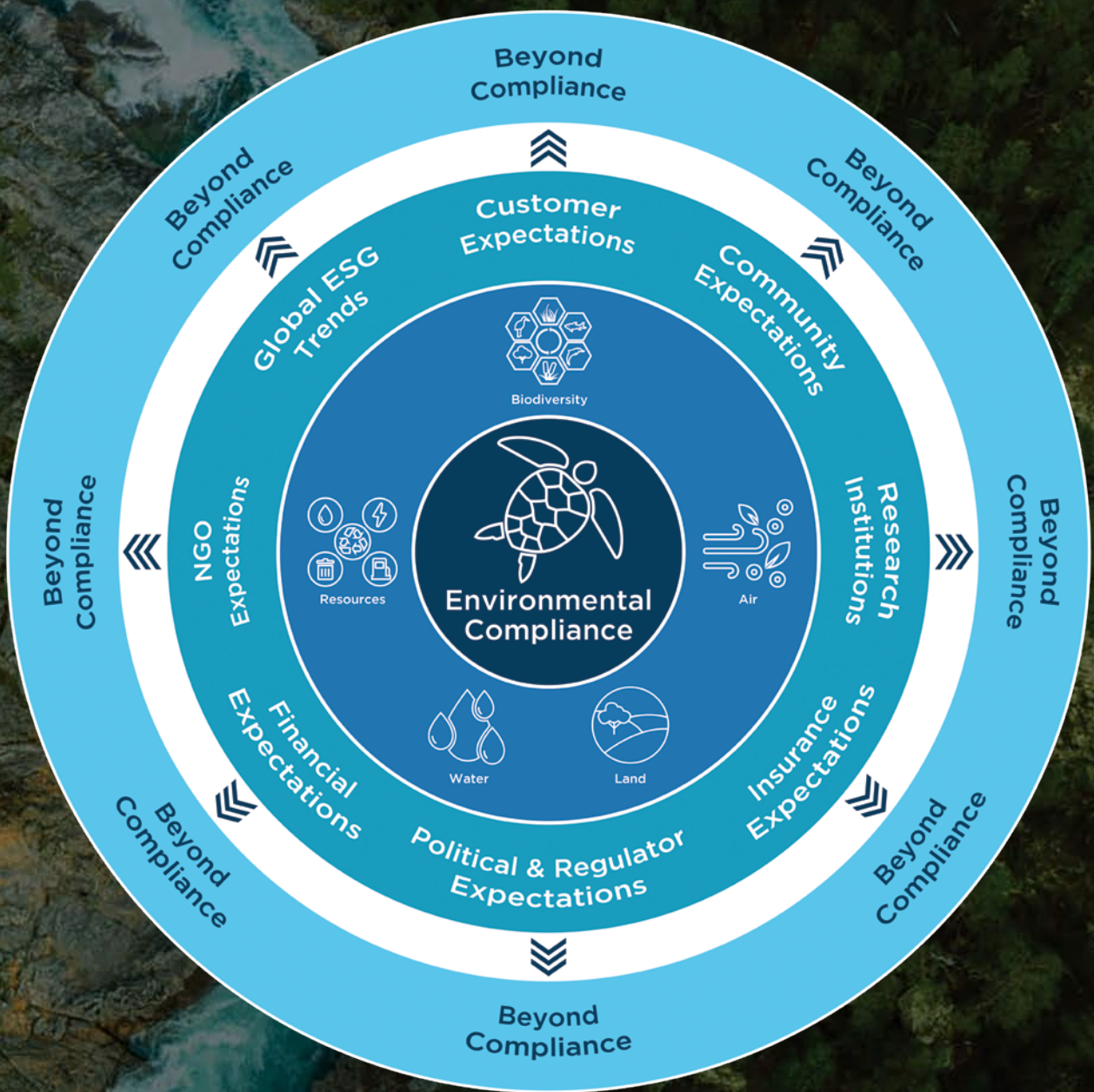
Scope 2:

50,528 t CO<sub>2eq</sub>

## ENVIRONMENT

GPC operates within an ISO14001 accredited Environmental Management System which provides the framework for how GPC identifies, manages and continually improves the environmental risks of its activities. GPC received recertification in 2024. Environmental management is an ongoing journey and GPC continues to investigate opportunities to continually improve and go beyond compliance.







**2023-2024**

# Performance





19  
audits  
completed



167  
environmental site  
inspections



13  
environmental  
notifiable incidents



1  
environmental  
exceedance



6  
environmental  
complaints



487 kg  
of rubbish collected  
at Clean Up events



914 t  
of waste (55 %)  
recycled



10  
STEM education  
engagements



>200  
school children  
at school  
engagements



16  
Environmental  
Data requests



## ENVIRONMENTAL PARTNERSHIPS WITH:

Port Curtis Integrated Monitoring Program

Gladstone Healthy Harbour Partnership

Gladstone Air Quality Network

Fitzroy Partnership for River Health

Local Marine Advisory Committee

Gladstone Industry Leadership Group

Queensland Ports Association

Ports Australia

Bundaberg Mary Regional Group

Central Queensland University

Mærsk Mc-Kinney Møller Centre for Zero  
Carbon Shipping

Tangaroa Blue

# Highlights



Environmental Management  
System ISO14001 Recertification  
Achieved



Community events supported  
and attended (World Science  
Festival, Oceanfest, Ecofest)



Approval by DCCEW of large-scale  
sediment saving project as part of  
fine sediment offset initiative to be  
implemented by GPC

## PORT OF ROCKHAMPTON

- 2023 Fitzroy Basin Ecosystem Health Index Report Card

## PORT OF GLADSTONE

- EcoPorts SDM recertification achieved
- Supported GADPL to achieve Gladstone Region Eco-Tourism Destination Certification
- 2023 Gladstone Healthy Harbour Partnership Report Card & Stewardship reports
- 21 years of seagrass monitoring
- Commenced funding of Facing Island beach clean-ups with Tangaroa Blue
- Facing Island Environmental Surveys commenced
- Continued Facing Island nesting turtle census support (predominantly Flatback turtle)
- Completed Stage 1 Living Seawall Project and commenced upscaling
- 23 feral pigs captured and removed (70% of those sighted), with control program continuing to reduce impact to the environment from feral pigs
- Light-towers upgraded at RG Tanna Coal Terminal to dimmable LED's to reduce electricity usage
- 15 operational environmental improvement projects completed

## PORT OF BUNDABERG

- Barubbra Island artificial migratory shorebird roost trial commenced
- Support for Mon Repos with more than 50 years of monitoring nesting loggerhead turtles
- 3-year partnership for Oceanfest ongoing
- Oil spill response exercise completed
- Electric vehicle charging station installed for GPC vehicles

For more information visit [gpcl.com.au/environment](https://gpcl.com.au/environment)







**Gladstone Ports  
Corporation**

---

Growth, prosperity, community.