



GLADSTONE PORTS CORPORATION

Field guide to the Fauna of Facing Island



We acknowledge that we are on the original lands of the First Nations people Bailai, Curang, Gooreng Gooreng, Taribelang Bunda, Darumbal, Kabi Kabi and Butchulla whose land we all share, live, work and play on.

We acknowledge and pay our respects to all elders of past, who have made the many sacrifices, contributions and paved the way for us all to be here today. We acknowledge our future and emerging leaders who will continue the fight for a better and united Australia for our generations of today, tomorrow and in the future.

Acknowledgement of **Traditional Owners**

Gladstone Ports Corporation (GPC) acknowledges and recognises Aboriginal and Torres Strait Islanders as the First Peoples of this country.

We acknowledge the **Bailai, Gurang, Gooreng Gooreng, Taribelang Bunda, Darumbal, Kabi Kabi and Butchulla** peoples on whose Country we work and live.

We respect their Elders past and present and embrace reconciliation to make positive, enduring change.

Koongo, Bailai word meaning place of water. Original artwork by Patricia Coleman, Bailai.



Contents

Introduction 1

Amphibians 4

Birds..... 7

Fish 28

Mammals..... 29

Reptiles 32

Species index 36

Introduction

This field guide is dedicated to assisting in the identification of the animal life on Facing Island. Ecological surveys conducted by Ecosure on behalf of Gladstone Ports Corporation in 2023 identified 169 fauna species including 9 amphibians, 100 birds, 3 freshwater fish, 7 mammals and 16 reptiles. Combined with species previously recorded on the island in 2017, the complete list of fauna species of Facing Island includes 214 species. This list is available in the species index.

This resource provides photographs of 157 of the 214 fauna species found on Facing Island including 11 amphibians, 116 birds, 2 freshwater fish, 11 mammals and 17 reptiles. The field guide format is optimised for mobile phone or tablet viewing.

For ease of use, species are classified using common names and categorised in broader taxonomic classes including amphibians, birds, fish, mammals and reptiles. Within each class, species are presented in alphabetical order to facilitate their location.

To support precise identification, each species is also named using binomial nomenclature — a system employing Latin genus and species names. This approach is particularly helpful given that species can have multiple or no common names.

Conservation significant species

Facing Island provides habitat for 22 species of conservation significance, listed under the Commonwealth *Environment Protection and Biodiversity Conservation Act 1999* (EPBC Act) or the Queensland Nature Conservation Act 1992 (NC Act). Most of those species are birds, including a variety of migratory shorebirds. These can be found within shoreline habitats on the island, particularly on the mud or sand flats at low tide.

The Commonwealth's EPBC Act protects Australia's native species and ecological communities. Through a rigorous scientific assessment, the threat status of species is evaluated and threatened fauna may be classified in the following categories:

- critically endangered (CE)
- endangered (E)
- vulnerable (V)
- migratory (M).

In Queensland, the NC Act provides for the conservation of nature and protects native plants and animals. Species are classified depending on the degree of risk of their extinction based on scientific assessments of their population size, health, distribution and habitat. Threatened species may be classified as the following:

- extinct
- extinct in the wild
- critically endangered (CR)
- endangered (E)
- vulnerable (V)
- special least concern (SL).

Conservation significant species present on Facing Island and their status under the EPBC Act and NC Act at the time of publication are summarised in the table below. This field guide includes identification photographs for 15 of the 22 conservation significant species. These are marked by a red box around the photograph.

Scientific name	Common name	NC Act Status	EPBC Act Status
Birds			
<i>Actitis hypoleucos</i>	common sandpiper	SL	Mi
<i>Calidris ferruginea</i>	curlew sandpiper	CR	CE, Mi
<i>Charadrius leschenaultii</i>	greater sand plover	V	V, Mi
<i>Charadrius mongolus</i>	lesser sand plover	E	E, Mi
<i>Esacus magnirostris</i>	beach stone-curlew	V	-
<i>Gelochelidon nilotica</i>	gull-billed tern	SL	Mi
<i>Hydroprogne caspia</i>	Caspian tern	SL	Mi
<i>Limosa lapponica baueri</i>	Western Alaskan bar-tailed godwit	V	V, Mi
<i>Limosa limosa</i>	black-tailed godwit	SL	Mi**
<i>Myiagra cyanoleuca</i>	satin flycatcher	SL	Mi
<i>Numenius madagascariensis</i>	eastern curlew	E	CE, Mi
<i>Numenius phaeopus</i>	whimbrel	SL	Mi
<i>Pandion haliaetus cristatus</i>	eastern osprey	SL	-
<i>Pluvialis fulva</i>	Pacific golden plover	SL	Mi
<i>Pluvialis squatarola</i>	grey plover	SL	Mi
<i>Rhipidura rufifrons</i>	rufous fantail	SL	Mi
<i>Sterna sumatrana</i>	black-naped tern	SL	Mi
<i>Sternula albifrons</i>	little tern	SL	Mi
<i>Symposiachrus trivirgatus</i>	spectacled monarch	SL	Mi
<i>Thalasseus bergii</i>	crested tern	SL	Mi
<i>Tringa incana</i>	wandering tattler	SL	Mi
Mammals			
<i>Pteropus poliocephalus</i>	grey-headed flying-fox	LC	V

NC Act status: CR – critically endangered, E – endangered wildlife, V – vulnerable wildlife, SL – special least concern, LC – least concern wildlife.
 EPBC Act status: CE – critically endangered, E – endangered, V – vulnerable, Mi – Migratory.

Amphibians

Native species



Brooklyn Hare

common green treefrog
(*Litoria caerulea*)



Brooklyn Hare

eastern sedgefrog
(*Litoria fallax*)



Brooklyn Hare

eastern stony creek frog
(*Litoria wilcoxii*)



Ecosure

graceful treefrog
(*Litoria gracilentia*)



Angus Morris

ornate burrowing frog
(*Platyplectrum ornatum*)



Brooklyn Hare

ruddy treefrog
(*Litoria rubella*)



Brooklyn Hare

scarlet sided pobblebonk
(*Limnodynastes terraereginae*)



Brooklyn Hare

striped marshfrog
(*Limnodynastes peronii*)



Ecosure

striped rocketfrog
(*Litoria nasuta*)



Ecosure

superb collared frog
(*Cyclorana brevipes*)

Introduced species



cane toad
(*Rhinella marina*)

Birds

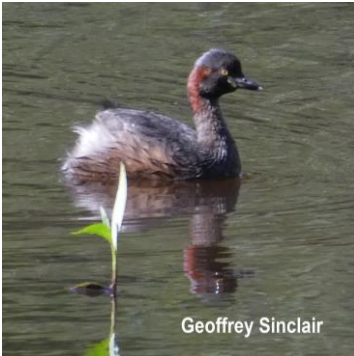
Native species



Australasian darter
(*Anhinga novaehollandiae*)



Australasian figbird
(*Sphecotheres vieilloti*)



Australasian grebe
(*Tachybaptus novaehollandiae*)



Australian hobby
(*Falco longipennis*)



Geoffrey Sinclair

Australian magpie
(*Gymnorhina tibicen*)



Kris McBride

Australian owl-nightjar
(*Aegotheles cristatus*)



Emma Montocchio

Australian pied oystercatcher
(*Haematopus longirostris*)



Ecosure

Australian white ibis
(*Threskiornis molucca*)



Brooklyn Hare

Australian wood duck
(*Chenonetta jubata*)



Emily Hancock

azure kingfisher
(*Ceyx azureus*)



Emma Moricchio

bar-shouldered dove
(*Geopelia humeralis*)



Kris McBride

beach stone-curlew
(*Esacus magnirostris*)
Threatened species



Kris McBride

black swan
(*Cygnus atratus*)



Kade Slater

black-faced cuckoo-shrike
(*Coracina novaehollandiae*)



Kris McBride

black-fronted dotterel
(*Euseyornis melanops*)



Kris McBride

black-shouldered kite
(*Elanus axillaris*)



Kris McBride

blue-faced honeyeater
(*Entomyzon cyanotis*)



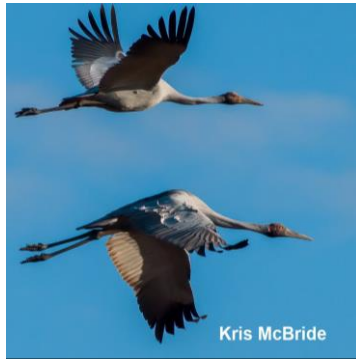
Mitch Horan

blue-winged kookaburra
(*Dacelo leachii*)



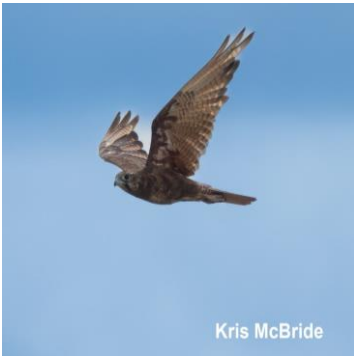
Kade Slater

brahminy kite
(*Haliastur indus*)



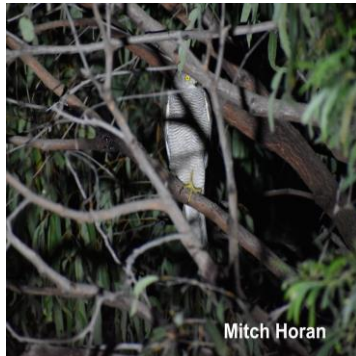
Kris McBride

brolga
(*Antigone rubicunda*)



Kris McBride

brown falcon
(*Falco berigora*)



Mitch Horan

brown goshawk
(*Accipiter fasciatus*)



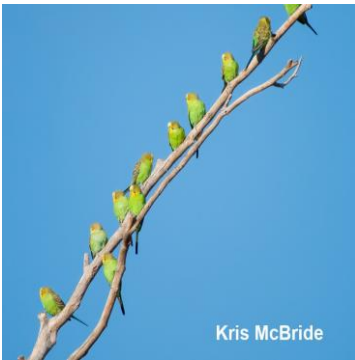
Ecosure

brown honeyeater
(*Lichmera indistincta*)



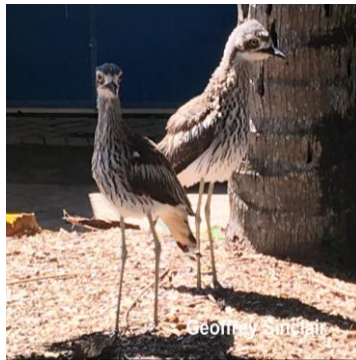
Kris McBride

brown quail
(*Synoicus ypsilophorus*)



Kris McBride

budgerigar
(*Melopsittacus undulatus*)



geomey.com.au

bush stone-curlew
(*Burhinus grallarius*)



Kris McBride

Caspian tern
(*Hydroprogne caspia*)
Threatened species



Tree Sitter

channel-billed cuckoo
(*Scythrops novaehollandiae*)



common sandpiper
(*Actitis hypoleucos*)
Threatened species



crested tern
(*Thalasseus bergii*)
Threatened species



curlew sandpiper
(*Calidris ferruginea*)
Threatened species



dusky moorhen
(*Gallinula tenebrosa*)



Mitch Horan

eastern barn owl
(*Tyto javanica*)



Kris McBride

eastern curlew
(*Numenius madagascariensis*)
Threatened species



Kris McBride

eastern great egret
(*Ardea modesta*)



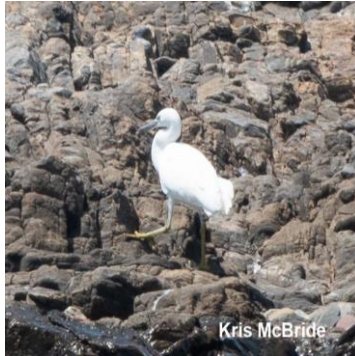
Kris McBride

eastern koel
(*Eudynamys orientalis*)



Mitch Horan

eastern reef egret (dark morph)
(*Egretta sacra*)



Kris McBride

eastern reef egret (light morph)
(*Egretta sacra*)



eastern osprey
(*Pandion haliaetus cristatus*)
Threatened species



Eurasian coot
(*Fulica atra*)



fan-tailed cuckoo
(*Cacomantis flabelliformis*)



forest kingfisher
(*Todiramphus macleayii*)



galah
(*Eolophus roseicapilla*)



golden-headed cisticola
(*Cisticola exilis*)



Emma Montocchie

grey fantail
(*Rhipidura albiscapa*)



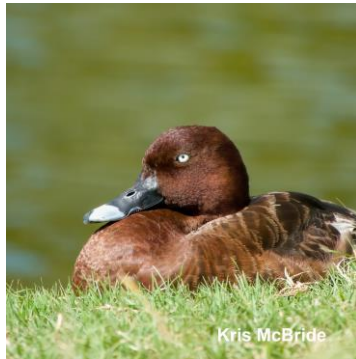
Geoffrey Sinclair

grey shrike-thrush
(*Colluricincla harmonica*)



Geoffrey Sinclair

grey teal
(*Anas gracilis*)



Kris McBride

hardhead
(*Aythya australis*)



Kris McBride

intermediate egret
(*Ardea intermedia*)



Kade Slater

laughing kookaburra
(*Dacelo novaeguineae*)



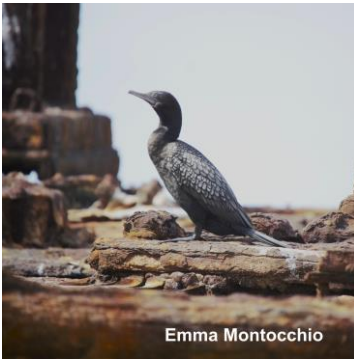
Emma Montocchio

leaden flycatcher
(*Myiagra rubecula*)



Emma Montocchio

Lewin's honeyeater
(*Meliphaga lewinii*)



Emma Montocchio

little black cormorant
(*Phalacrocorax sulcirostris*)



Kris McBride

little bronze-cuckoo
(*Chalcites minutillus*)



Kris McBride

little egret
(*Egretta garzetta*)



Geoffrey Sinclair

little friarbird
(*Philemon citreogularis*)



Brooklyn Hare

little pied cormorant
(*Microcarbo melanoleucos*)



Kris McBride

little shrike-thrush
(*Colluricincla megarhyncha*)



Brooklyn Hare

little tern
(*Sternula albifrons*)
Threatened species



Kris McBride

magpie goose
(*Anseranas semipalmata*)



Ecosure

magpie-lark
(*Grallina cyanoleuca*)



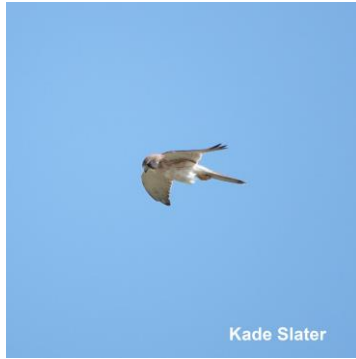
Emma Montocchio

masked lapwing
(*Vanellus miles*)



Geoffrey Sinclair

mistletoebird
(*Dicaeum hirundinaceum*)



Kade Slater

nankeen kestrel
(*Falco cenchroides*)



Angus Morris

nankeen night-heron
(*Nycticorax caledonicus*)



Kris McBride

noisy friarbird
(*Philemon corniculatus*)



Kris McBride

noisy miner
(*Manorina melanocephala*)



Emma Montocchio

noisy pitta
(*Pitta versicolor*)



Mitch Horan

olive-backed oriole
(*Oriolus sagittatus*)



Emma Antocchio

olive-backed sunbird
(*Cinnyris jugularis*)



Kris McBride

Pacific baza
(*Aviceda subcristata*)



Geoffrey Sinclair

Pacific black duck
(*Anas superciliosa*)



Kade Slater

Pacific golden plover
(*Pluvialis fulva*)
Threatened species



Kris McBride

peaceful dove
(*Geopelia placida*)



Kris McBride

pheasant coucal
(*Centropus phasianinus*)



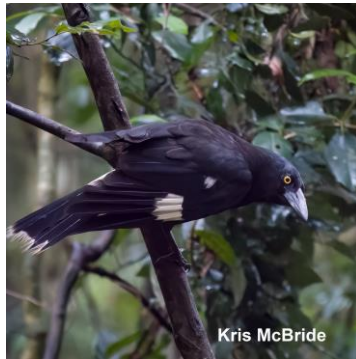
Emma Montocchio

pied butcherbird
(*Cracticus nigrogularis*)



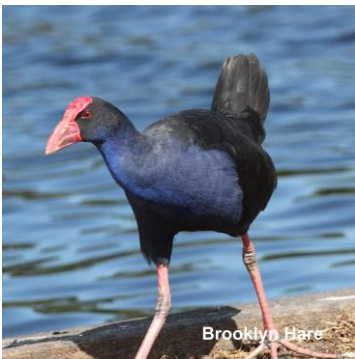
Kris McBride

pied cormorant
(*Phalacrocorax varius*)



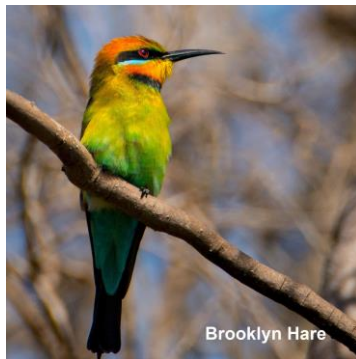
Kris McBride

pied currawong
(*Strepera graculina*)



Brooklyn Hare

purple swamphen
(*Porphyrio melanotus*)



Brooklyn Hare

rainbow bee-eater
(*Merops ornatus*)



Kris McBride

rainbow lorikeet
(*Trichoglossus moluccanus*)



Kris McBride

red-backed fairy-wren
(*Malurus melanocephalus*)



Kris McBride

red-capped plover
(*Charadrius ruficapillus*)



Mitchell Horan

red-tailed black-cockatoo
(*Calyptorhynchus banksii*)



Kris McBride

restless flycatcher
(*Myiagra inquieta*)



Kris McBride

rose-crowned fruit-dove
(*Ptilinopus regina*)



Kade Slater

rufous fantail
(*Rhipidura rufifrons*)
Threatened species



Kade Slater

rufous whistler
(*Pachycephala rufiventris*)



Kris McBride

sacred kingfisher
(*Todiramphus sanctus*)



Kade Slater

satin flycatcher
(*Myiagra cyanoleuca*)
Threatened species



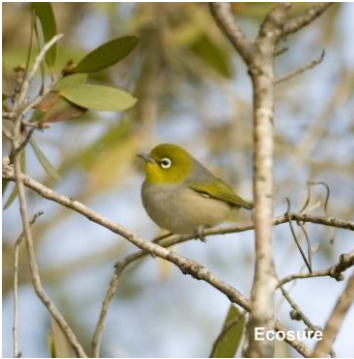
Geoffrey Sinclair

scaly-breasted lorikeet
(*Trichoglossus chlorolepidotus*)



Emily Hancock

silver gull
(*Chroicocephalus novaehollandiae*)



Ecosure

silveryeye
(*Zosterops lateralis*)



Kris McBride

singing honeyeater
(*Gavicalis virescens*)



Kris McBride

sooty oystercatcher
(*Haematopus fuliginosus*)



Kris McBride

southern boobook
(*Ninox boobook*)



Kris McBride

spangled drongo
(*Dicrurus bracteatus*)



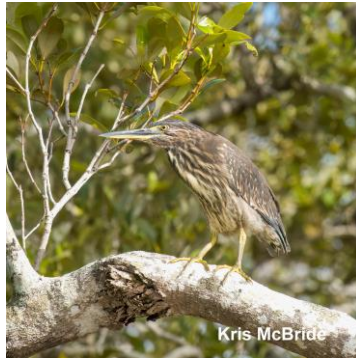
Mitch Horan

spectacled monarch
(*Symposiachrus trivirgatus*)
Threatened species



Geoffrey Sinclair

straw-necked ibis
(*Threskiornis spinicollis*)



Kris McBride

striated heron
(*Butorides striata*)



Emma Montocchio

striated pardalote
(*Pardalotus striatus*)



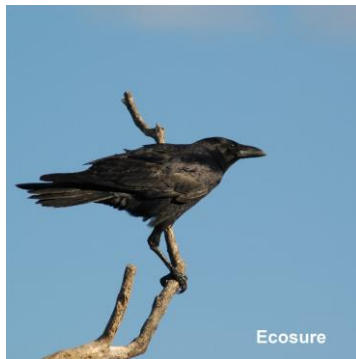
Kris McBride

tawny frogmouth
(*Podargus strigoides*)



Kris McBride

tawny grassbird
(*Cincloramphus timoriensis*)



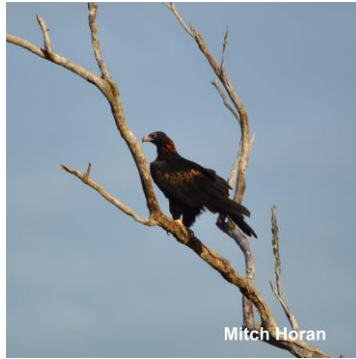
Ecosure

Torresian crow
(*Corvus orru*)



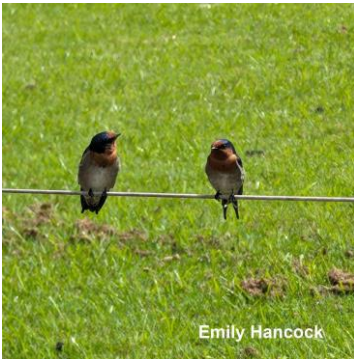
Emma Montocchio

varied triller
(*Lalage leucomela*)



Mitch Horan

wedge-tailed eagle
(*Aquila audax*)



Emily Hancock

welcome swallow
(*Hirundo neoxena*)



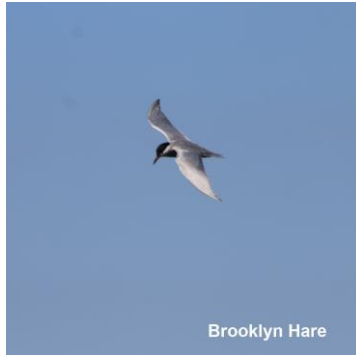
Kris McBride

**Western Alaskan bar-tailed
godwit**
(*Limosa lapponica*)
Threatened species



Kris McBride

whimbrel
(*Numenius phaeopus*)
Threatened species



Brooklyn Hare

whiskered tern
(*Chlidonias hybrida*)



Kris McBride

whistling kite
(*Haliastur sphenurus*)



Brooklyn Hare

white-bellied sea-eagle
(*Haliaeetus leucogaster*)



Emma Montocchio

white-breasted woodswallow
(*Artamus leucorhynchus*)



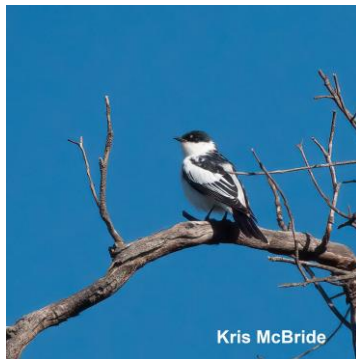
Geoffrey Sinclair

white-faced heron
(*Egretta novaehollandiae*)



Kris McBride

white-throated honeyeater
(*Meliphreptus albogularis*)



Kris McBride

white-winged triller
(*Lalage tricolor*)



willie wagtail
(*Rhipidura leucophrys*)

Fish

Native species



northern mud gudgeon
(*Ophiocara porocephala*)

Introduced species



eastern mosquito fish
(*Gambusia holbrooki*)

Mammals

Native species



black flying-fox
(*Pteropus alecto*)



common brushtail possum
(*Trichosurus vulpecula*)



eastern grey kangaroo
(*Macropus giganteus*)



Gould's wattled bat
(*Chalinolobus gouldii*)



Tanya Fountain

grey-headed flying-fox
(*Pteropus poliocephalus*)
Threatened species



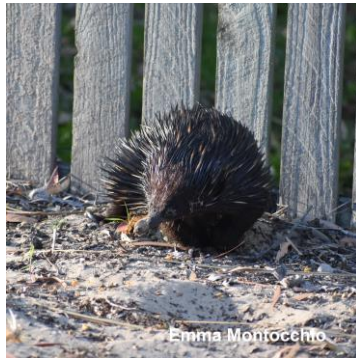
Angus Morris

large-footed myotis
(*Myotis macropus*)



Ecosure

little bent-wing bat
(*Miniopterus australis*)



Emma Montocchio

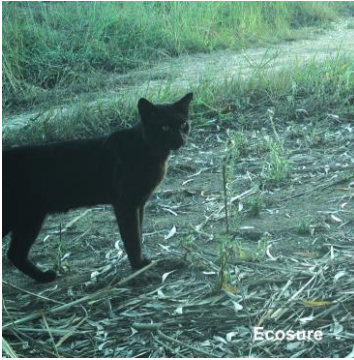
short-beaked echidna
(*Tachyglossus aculeatus*)



Emma Montocchio

whiptail wallaby
(*Notamacropus parryi*)

Introduced species



cat
(*Felis catus*)



dog
(*Canis familiaris*)

Reptiles

Native species



Angus Morris

brown tree snake
(*Boiga irregularis*)



Ecosure

Bynoe's gecko
(*Heteronotia binoei*)



Emma Montocchio

carpet python
(*Morelia spilota*)



Ecosure

dubious dtella
(*Gehyra dubia*)



Brooklyn Hare

eastern blue tongue
(*Tiliqua scincoides*)



Amanda Scott

eastern long-necked turtle
(*Chelodina longicollis*)



Kade Slater

eastern-striped skink
(*Ctenotus robustus*)



Angus Morris

freshwater snake
(*Tropidonophis mairii*)



Mitch Horan

green tree snake
(*Dendrelaphis punctulatus*)



Geoffrey Sinclair

Kreffft's river turtle
(*Emydura macquarii*)



Brooklyn Harp

lesser black whipsnake
(*Demansia vestigiata*)



Angus Morris

spotted python
(*Antaresia maculosa*)



Shanay Smyly

tommy roundhead
(*Diporiphora australis*)



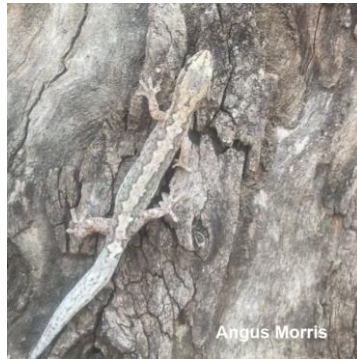
Angus Morris

yellow-faced whip snake
(*Demansia psammophis*)



Mitch Horan

yellow-spotted monitor
(*Varanus panoptes*)



Angus Morris

zig-zag gecko
(*Amalosa rhombifer*)

Introduced species



house gecko
(*Hemidactylus frenatus*)

Species index

This index provides the species name with details of their taxonomy, including the genus and species (scientific name), family, and class that the species is classified under. The species are listed in alphabetical order using common names to reflect their order of appearance in this field guide.

Scientific name	Common name	Family
Amphibians		
<i>Litoria caerulea</i>	common green treefrog	Hylidae
<i>Litoria fallax</i>	eastern sedgefrog	Hylidae
<i>Litoria wilcoxii</i>	eastern stony creek frog	Hylidae
<i>Litoria gracilentia</i>	graceful treefrog	Hylidae
<i>Platyplectrum ornatum</i>	ornate burrowing frog	Limnodynastidae
<i>Litoria rubella</i>	ruddy treefrog	Hylidae
<i>Limnodynastes terraereginae</i>	scarlet sided pobblebonk	Limnodynastidae
<i>Limnodynastes tasmaniensis</i>	spotted grassfrog	Limnodynastidae
No image available.		
<i>Limnodynastes peronii</i>	striped marshfrog	Limnodynastidae
<i>Litoria nasuta</i>	striped rocketfrog	Hylidae
<i>Cyclorana brevipes</i>	superb collared frog	Hylidae
Introduced species		
<i>Rhinella marina</i>	cane toad	Bufoidea
Birds		
<i>Anhinga novaehollandiae</i>	Australasian darter	Anhingidae
<i>Sphecotheres vieilloti</i>	Australasian figbird	Oriolidae

Scientific name	Common name	Family
<i>Tachybaptus novaehollandiae</i>	Australasian grebe	Podicipedidae
<i>Anthus novaeseelandiae</i>	Australasian pipit	Motacillidae
No image available.		
<i>Falco longipennis</i>	Australian hobby	Falconidae
<i>Gymnorhina tibicen</i>	Australian magpie	Artamidae
<i>Aegotheles cristatus</i>	Australian owl-nightjar	Aegothelidae
<i>Haematopus longirostris</i>	Australian pied oystercatcher	Haematopodidae
<i>Acrocephalus australis</i>	Australian reed-warbler	Acrocephalidae
No image available.		
<i>Threskiornis molucca</i>	Australian white ibis	Threskiornithidae
<i>Chenonetta jubata</i>	Australian wood duck	Anatidae
<i>Ceyx azureus</i>	azure kingfisher	Alcedinidae
<i>Hirundo rustica</i>	barn swallow	Hirundinidae
No image available.		
<i>Coracina lineata</i>	barred cuckoo-shrike	Campephagidae
No image available.		
<i>Geopelia humeralis</i>	bar-shouldered dove	Columbidae
<i>Esacus magnirostris</i>	beach stone-curlew	Burhinidae
<i>Falco subniger</i>	black falcon	Falconidae
No image available.		
<i>Cygnus atratus</i>	black swan	Anatidae
<i>Coracina novaehollandiae</i>	black-faced cuckoo-shrike	Campephagidae

Scientific name	Common name	Family
<i>Elseya melanops</i>	black-fronted dotterel	Charadriidae
<i>Sterna sumatrana</i>	black-naped tern	Laridae
No image available.		
<i>Elanus axillaris</i>	black-shouldered kite	Accipitridae
<i>Limosa limosa</i>	black-tailed godwit	Scolopacidae
No image available.		
<i>Entomyzon cyanotis</i>	blue-faced honeyeater	Meliphagidae
<i>Dacelo leachii</i>	blue-winged kookaburra	Alcedinidae
<i>Haliastur indus</i>	brahminy kite	Accipitridae
<i>Antigone rubicunda</i>	broilga	Gruidae
<i>Falco berigora</i>	brown falcon	Falconidae
<i>Accipiter fasciatus</i>	brown goshawk	Accipitridae
<i>Lichmera indistincta</i>	brown honeyeater	Meliphagidae
<i>Synoicus ypsilophorus</i>	brown quail	Phasianidae
<i>Melopsittacus undulatus</i>	budgerigar	Psittaculidae
<i>Burhinus grallarius</i>	bush stone-curlew	Burhinidae
<i>Hydroprogne caspia</i>	Caspian tern	Laridae
<i>Scythrops novaehollandiae</i>	channel-billed cuckoo	Cuculidae
<i>Actitis hypoleucos</i>	common sandpiper	Scolopacidae
<i>Thalasseus bergii</i>	crested tern	Laridae
<i>Calidris ferruginea</i>	curlew sandpiper	Scolopacidae

Scientific name	Common name	Family
<i>Taeniopygia bichenovii</i>	double-barred finch	Estrildidae
No image available.		
<i>Myzomela obscura</i>	dusky honeyeater	Meliphagidae
No image available.		
<i>Gallinula tenebrosa</i>	dusky moorhen	Rallidae
<i>Artamus cyanopterus</i>	dusky woodswallow	Artamidae
No image available.		
<i>Tyto javanica</i>	eastern barn owl	Tytonidae
<i>Numenius madagascariensis</i>	eastern curlew	Scolopacidae
<i>Ardea modesta</i>	eastern great egret	Ardeidae
<i>Eudynamys orientalis</i>	eastern koel	Cuculidae
<i>Pandion haliaetus cristatus</i>	eastern osprey	Pandionidae
<i>Egretta sacra</i>	eastern reef egret	Ardeidae
<i>Fulica atra</i>	Eurasian coot	Rallidae
<i>Cacomantis flabelliformis</i>	fan-tailed cuckoo	Cuculidae
<i>Todiramphus macleayii</i>	forest kingfisher	Alcedinidae
<i>Eolophus roseicapilla</i>	galah	Cacatuidae
<i>Cisticola exilis</i>	golden-headed cisticola	Cisticolidae
<i>Charadrius leschenaultii</i>	greater sand plover	Charadriidae
No image available.		
<i>Rhipidura albiscapa</i>	grey fantail	Rhipiduridae

Scientific name	Common name	Family
<i>Pluvialis squatarola</i>	grey plover	Charadriidae
No image available.		
<i>Colluricincla harmonica</i>	grey shrike-thrush	Pachycephalidae
<i>Anas gracilis</i>	grey teal	Anatidae
<i>Gelochelidon nilotica</i>	gull-billed tern	Laridae
No image available.		
<i>Aythya australis</i>	hardhead	Anatidae
<i>Chalcites basalis</i>	Horsfield's bronze-cuckoo	Cuculidae
No image available.		
<i>Ardea intermedia</i>	intermediate egret	Ardeidae
<i>Dacelo novaeguineae</i>	laughing kookaburra	Alcedinidae
<i>Myiagra rubecula</i>	leaden flycatcher	Monarchidae
<i>Charadrius mongolus</i>	lesser sand plover	Charadriidae
No image available.		
<i>Meliphaga lewinii</i>	Lewin's honeyeater	Meliphagidae
<i>Phalacrocorax sulcirostris</i>	little black cormorant	Phalacrocoracidae
<i>Chalcites minutillus</i>	little bronze-cuckoo	Cuculidae
<i>Egretta garzetta</i>	little egret	Ardeidae
<i>Philemon citreogularis</i>	little friarbird	Meliphagidae
<i>Microcarbo melanoleucos</i>	little pied cormorant	Phalacrocoracidae
<i>Colluricincla megarhyncha</i>	little shrike-thrush	Pachycephalidae
<i>Sternula albifrons</i>	little tern	Laridae

Scientific name	Common name	Family
<i>Anseranas semipalmata</i>	magpie goose	Anseranatidae
<i>Grallina cyanoleuca</i>	magpie-lark	Monarchidae
<i>Cavicalis fasciogularis</i>	mangrove honeyeater	Meliphagidae
No image available.		
<i>Peneoenanthe pulverulenta</i>	mangrove robin	Petroicidae
No image available.		
<i>Vanellus miles</i>	masked lapwing	Charadriidae
<i>Dicaeum hirundinaceum</i>	mistletoebird	Dicaeidae
<i>Falco cenchroides</i>	nankeen kestrel	Falconidae
<i>Nycticorax caledonicus</i>	nankeen night-heron	Ardeidae
<i>Philemon corniculatus</i>	noisy friarbird	Meliphagidae
<i>Manorina melanocephala</i>	noisy miner	Meliphagidae
<i>Pitta versicolor</i>	noisy pitta	Pittidae
<i>Oriolus sagittatus</i>	olive-backed oriole	Oriolidae
<i>Cinnyris jugularis</i>	olive-backed sunbird	Nectariniidae
<i>Aviceda subcristata</i>	Pacific baza	Accipitridae
<i>Anas superciliosa</i>	Pacific black duck	Anatidae
<i>Pluvialis fulva</i>	Pacific golden plover	Charadriidae
<i>Cacomantis pallidus</i>	pallid cuckoo	Cuculidae
No image available.		
<i>Geopelia placida</i>	peaceful dove	Columbidae

Scientific name	Common name	Family
<i>Falco peregrinus</i>	peregrine falcon	Falconidae
No image available.		
<i>Centropus phasianinus</i>	pheasant coucal	Cuculidae
<i>Cracticus nigrogularis</i>	pied butcherbird	Artamidae
<i>Phalacrocorax varius</i>	pied cormorant	Phalacrocoracidae
<i>Strepera graculina</i>	pied currawong	Artamidae
<i>Porphyrio melanotus</i>	purple swamphen	Rallidae
<i>Tadorna radjah</i>	Radjah shelduck	Anatidae
No image available.		
<i>Merops ornatus</i>	rainbow bee-eater	Meropidae
<i>Trichoglossus moluccanus</i>	rainbow lorikeet	Psittaculidae
<i>Malurus melanocephalus</i>	red-backed fairy-wren	Maluridae
<i>Charadrius ruficapillus</i>	red-capped plover	Charadriidae
<i>Calyptorhynchus banksii</i>	red-tailed black-cockatoo	Cacatuidae
<i>Myiagra inquieta</i>	restless flycatcher	Monarchidae
<i>Ptilinopus regina</i>	rose-crowned fruit-dove	Columbidae
<i>Rhipidura rufifrons</i>	rufous fantail	Rhipiduridae
<i>Pachycephala rufiventris</i>	rufous whistler	Pachycephalidae
<i>Todiramphus sanctus</i>	sacred kingfisher	Alcedinidae
<i>Myiagra cyanoleuca</i>	satin flycatcher	Monarchidae
<i>Trichoglossus chlorolepidotus</i>	scaly-breasted lorikeet	Psittaculidae

Scientific name	Common name	Family
<i>Myzomela sanguinolenta</i>	scarlet honeyeater	Meliphagidae
No image available.		
<i>Chroicocephalus novaehollandiae</i>	silver gull	Laridae
<i>Zosterops lateralis</i>	silveryeye	Zosteropidae
<i>Gavicalis virescens</i>	singing honeyeater	Meliphagidae
<i>Haematopus fuliginosus</i>	sooty oystercatcher	Haematopodidae
<i>Ninox boobook</i>	southern boobook	Strigidae
<i>Dicrurus bracteatus</i>	spangled drongo	Dicruridae
<i>Symposiachrus trivirgatus</i>	spectacled monarch	Monarchidae
<i>Threskiornis spinicollis</i>	straw-necked ibis	Threskiornithidae
<i>Butorides striata</i>	striated heron	Ardeidae
<i>Pardalotus striatus</i>	striated pardalote	Pardalotidae
<i>Podargus strigoides</i>	tawny frogmouth	Podargidae
<i>Cincloramphus timoriensis</i>	tawny grassbird	Locustellidae
<i>Corvus orru</i>	Torresian crow	Corvidae
<i>Petrochelidon nigricans</i>	tree martin	Hirundinidae
No image available.		
<i>Gavicalis versicolor</i>	varied honeyeater	Meliphagidae
No image available.		
<i>Lalage leucomela</i>	varied triller	Campephagidae
<i>Tringa incana</i>	wandering tattler	Scolopacidae
No image available.		

Scientific name	Common name	Family
<i>Aquila audax</i>	wedge-tailed eagle	Accipitridae
<i>Smicronis brevirostris</i>	weebill	Acanthizidae
No image available.		
<i>Hirundo neoxena</i>	welcome swallow	Hirundinidae
<i>Limosa lapponica</i>	Western Alaskan bar-tailed godwit	Scolopacidae
No image available.		
<i>Numenius phaeopus</i>	whimbrel	Scolopacidae
<i>Chlidonias hybrida</i>	whiskered tern	Laridae
<i>Haliastur sphenurus</i>	whistling kite	Accipitridae
<i>Haliaeetus leucogaster</i>	white-bellied sea-eagle	Accipitridae
<i>Artamus leucorhynchus</i>	white-breasted woodswallow	Artamidae
<i>Egretta novaehollandiae</i>	white-faced heron	Ardeidae
<i>Gerygone olivacea</i>	white-throated gerygone	Acanthizidae
No image available.		
<i>Melithreptus albogularis</i>	white-throated honeyeater	Meliphagidae
<i>Lalage tricolor</i>	white-winged triller	Campephagidae
<i>Rhipidura leucophrys</i>	willie wagtail	Rhipiduridae
Fish		
<i>Lates calcarifer</i>	barramundi	Latidae
No image available.		
<i>Ophiocarpa porocephala</i>	northern mud gudgeon	Eleotridae

Scientific name	Common name	Family
<i>Leiopotherapon unicolor</i>	spangled perch	Terapontidae
No image available		
Introduced species		
<i>Gambusia holbrooki</i>	eastern mosquitofish	Poeciliidae
Mammals		
<i>Pteropus alecto</i>	black flying-fox	Pteropodidae
<i>Rattus rattus</i>	black rat	Muridae
No image available.		
<i>Scotorepens orion</i>	central-eastern broad-nosed bat or greater broad-nosed bat	Vespertilionidae
No image available.		
<i>Chalinolobus morio</i>	chocolate wattled bat	Vespertilionidae
No image available.		
<i>Trichosurus vulpecula</i>	common brushtail possum	Phalangeridae
<i>Miniopterus orianae oceanensis</i>	eastern bent-winged bat	Miniopteridae
No image available.		
<i>Vespadelus troughtoni</i>	eastern cave bat	Vespertilionidae
No image available.		
<i>Macropus giganteus</i>	eastern grey kangaroo	Macropodidae
<i>Chalinolobus gouldii</i>	Gould's wattled bat	Vespertilionidae
<i>Chaerephon jobensis</i>	greater northern freetail bat	Molossidae
No image available.		
<i>Pteropus poliocephalus</i>	grey-headed flying-fox	Pteropodidae

Scientific name	Common name	Family
<i>Chalinolobus nigrogriseus</i> No image available.	hoary wattled bat	Vespertilionidae
<i>Myotis macropus</i>	large-footed myotis	Chiroptera
<i>Miniopterus australis</i>	little bent-wing bat	Miniopteridae
<i>Scotorepens greyii</i> No image available.	little broad-nosed bat / northern broad-nosed bat	Vespertilionidae
<i>Scotorepens sanborni</i> No image available.	little broad-nosed bat, northern broad-nosed bat or hoary wattled bat	Vespertilionidae
<i>Ozimops lumsdenae</i> No image available.	northern freetail bat	Molossidae
<i>Ozimops ridei</i> No image available.	Ride's free-tailed bat	Molossidae
<i>Tachyglossus aculeatus</i>	short-beaked echidna	Tachyglossidae
<i>Taphozous troughtoni</i> No image available.	Troughton's sheath-tailed bat	Emballonuridae
<i>Nyctophilus sp.</i> No image available.	unidentified microbat	Vespertilionidae
<i>Hydromys chrysogaster</i> No image available.	water rat	Muridae
<i>Macropus parryi</i>	whiptail wallaby (pretty- faced)	Macropodidae
<i>Austronomus australis</i> No image available.	white-striped free-tailed bat	Molossidae

Scientific name	Common name	Family
<i>Saccolaimus flaviventri</i> No image available.	yellow-bellied sheath-tail bat	Emballonuridae
Introduced species		
<i>Felis catus</i>	cat	Felidae
<i>Canis familiaris</i>	dog	Canidae
<i>Vulpes vulpes</i>	red fox	Canidae
Reptiles		
<i>Boiga irregularis</i>	brown tree snake	Colubridae
<i>Heteronotia binoei</i>	Bynoe's gecko	Gekkonidae
<i>Morelia spilota</i>	carpet python	Boidae
<i>Acanthophis antarcticus</i> No image available.	common death adder	Elapidae
<i>Gehyra dubia</i>	dubious dtella	Gekkonidae
<i>Tiliqua scincoides</i>	eastern blue tongue	Scincidae
<i>Pseudonaja textilis</i> No image available.	eastern brown snake	Elapidae
<i>Chelodina longicollis</i>	eastern long-necked turtle	Chelidae
<i>Gehyra versicolor</i> No image available.	eastern tree dtella	Gekkonidae
<i>Ctenotus robustus</i>	eastern-striped skink	Scincidae
<i>Cryptoblepharus pulcher pulcher</i> No image available.	elegant snake-eyed skink	Scincidae

Scientific name	Common name	Family
<i>Morethia taeniopleura</i> No image available.	fire-tailed skink	Scincidae
<i>Tropidonophis mairii</i>	freshwater snake	Colubridae
<i>Dendrelaphis punctulatus</i>	green tree snake	Colubridae
<i>Emydura macquarii</i>	Kreff's river turtle	Chelidae
<i>Demansia vestigiata</i>	lesser black whipsnake	Elapidae
<i>Carlia vivax</i> No image available.	lively rainbow skink	Scincidae
<i>Carlia pectoralis sensu lato</i> No image available.	open-litter rainbow skink	Scincidae
<i>Lampropholis couperi</i> No image available.	plain-backed sunskink	Scincidae
<i>Carlia munda</i> No image available.	shaded-litter rainbow-skink	Scincidae
<i>Ctenotus spaldingi</i> No image available.	Spalding's Ctenotus	Scincidae
<i>Antaresia maculosa</i>	spotted python	Pythonidae
<i>Ctenotus ingrami</i> No image available.	spotted yellow-sided Ctenotus	Scincidae
<i>Diporiphora australis</i>	tommy roundhead	Agamidae
<i>Demansia psammophis</i>	yellow-faced whip snake	Elapidae
<i>Varanus panoptes</i>	yellow-spotted monitor	Varanidae

Scientific name	Common name	Family
<i>Amalosia rhombifer</i>	zig-zag gecko	Diplodactylidae
Introduced species		
<i>Hemidactylus frenatus</i>	house gecko	Gekkonidae



Citation: Ecosure, 2024, *Field guide to the flora of Facing Island*, Report to Gladstone Ports Corporation Limited, Publication Location – Rockhampton

Report compiled by Ecosure Pty Ltd

ABN: 63 106 067 976

admin@ecosure.com.au

www.ecosure.com.au



PR7531-DE.Field guide to the flora of Facing Island