



Northern Land Expansion Project

Port of Gladstone

March 2026

Central to the strategic growth of the Port of Gladstone, construction of a 2.8km long reclamation bund wall at Fisherman's Landing is underway. The 2025-28 Northern Land Expansion Project (NLEP) is a key expansion project to support responsible land reclamation and facilitate future trade development opportunities.

Location

Strategic plans for the growth of the Port of Gladstone have identified Fisherman's Landing as an ideal precinct to meet industry and market demand.

Fisherman's Landing – also known as the Northern Trade Precinct – has significant potential as an identified priority wharf centre with marine and land interface, offering trade connections to the world via wharf, logistics, transport and materials corridors.

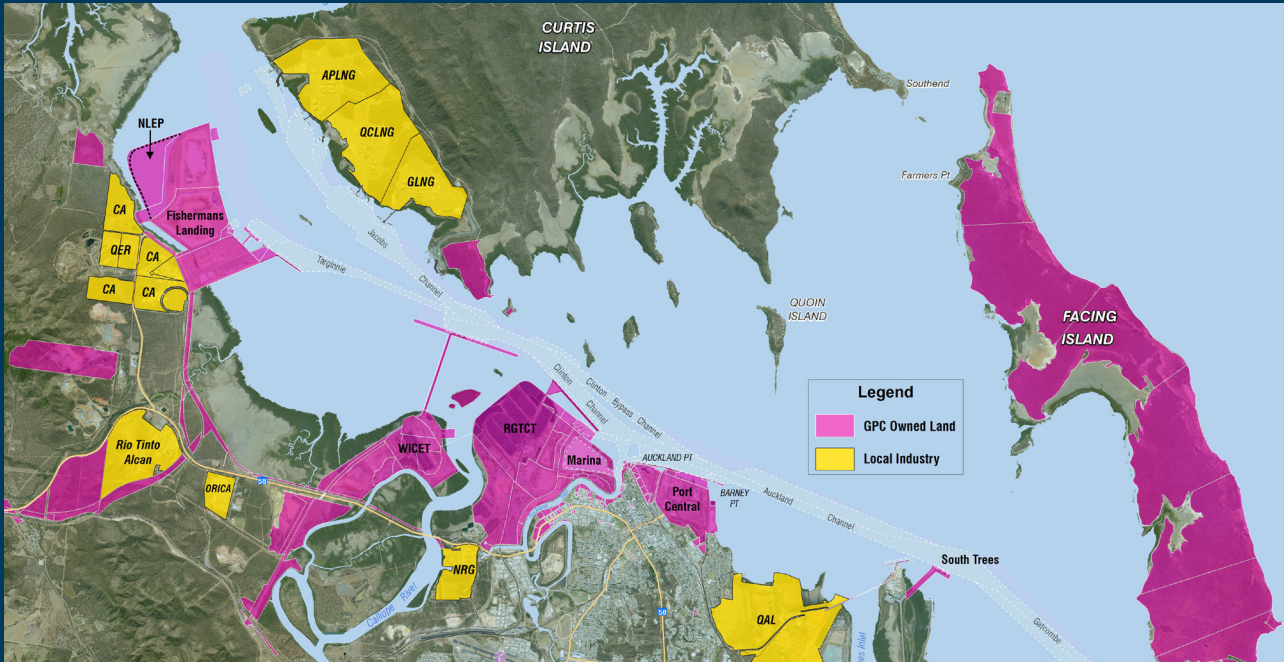
Scope

NLEP aligns with the Queensland Government's Priority Port Master Plan for Gladstone.

The bund wall will form a perimeter for the beneficial re-use of dredged material, expanding the existing reclamation land at Fisherman's Landing, to create a new portside land area of approximately 109 hectares.

The future NLEP reclamation area can:

- provide long-term placement of dredged material, so that channels can meet future width and depth requirements for larger vessels
- create strategically-located usable land for future industrial growth and jobs
- enable heavy industry and fuel storage to be safely stored away from the Gladstone CBD
- facilitate the unloading of large, bulky (oversize overmass/OSOM) cargo (e.g. 85m-100m wind turbine blades and towers).



How

GPC's delivery of NLEP is backed by careful planning, stringent Queensland and Australian Government approvals, ISO-accredited environmental management systems, and comprehensive monitoring practices. There are robust processes in place in case cultural material is found within the area during construction.

When

In development since 2013, NLEP is part of the total reclamation area approved under GPC's Port of Gladstone and Golding Cutting Channel Duplication Project (GGCCDP). There was a comprehensive approval process across both Australian and Queensland Governments, with extensive public engagement and consultation.

Construction started in August 2025 and is expected to be completed by 2028, and then ready to receive and safely contain dredged material. The design will reduce the suffusion of fine sediment through the walls into marine waters.

Bund wall monitoring will continue through to reclamation works, future development and end use. A comprehensive suite of environmental monitoring is underway for water quality, seagrass, macroalgae, shorebirds, mangroves, watermouse and fine sediment.



For more information

Visit www.gpcl.com.au/northern-land-expansion

Email NLEP@gpcl.com.au or phone GPC on 1800 243 GPC (472)



Gladstone Ports Corporation

Growth, prosperity, community.